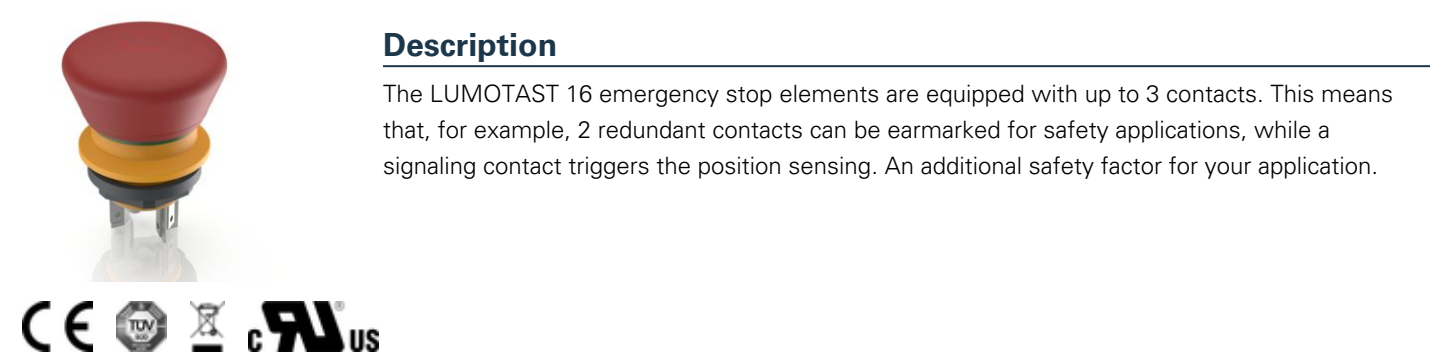


LUMOTAST 16, emergency stop button, illuminated, 2 NC, Gold, Flat quick-connect terminal 2.8 x 0.5 tin-plated, reset by rotating, arrows red



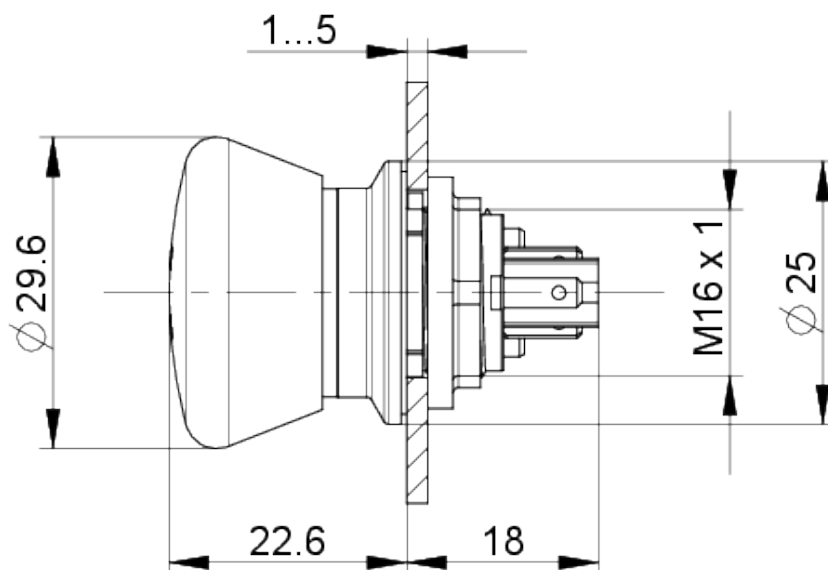
technical data

> general		direct links
Color of mushroom	red	> RAFI eCatalog
Legending color	red	
Bezel color	red	
Property of bezel / mushroom	translucent	
Collar color	yellow	
Luminous element color	red	
Collar shape	round	
Operating temperature, min.	-25 °C	
Operating temperature, max.	70 °C	
Storage temperature, min.	-40 °C	
Storage temperature, max.	80 °C	
illuminated	Yes	
Luminous elements	LED	
Packaging	Box	
Packaging unit	10 pcs.	
net weight	13.4 g	
Operating life	30,000 cycles	
B10	50,000 cycles	
B10d	100,000 cycles	
Degree of protection, front side, according to DIN EN 60529	IP65 IP67	
UL Enclosure Type Rating front side	type 1	
Environment resistance	IEC 60068-2-27 IEC 60068-2-30	
Impact resistance IK	05 side 05 frontal	
Minimum order quantity (MOQ)	10 pcs.	
Pollution degree acc. to DIN EN 61010-1	Pollution degree 2	

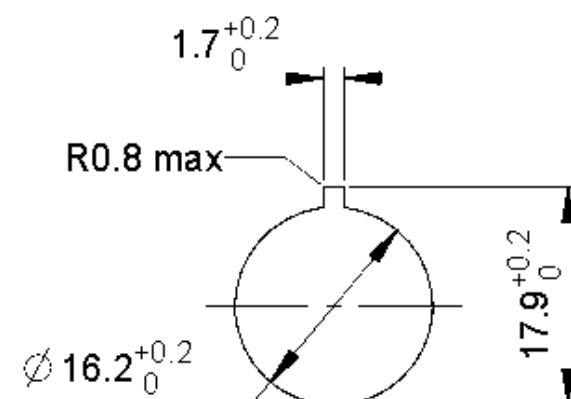
RoHS compliant	Yes
REACH compliant	Yes
country of origin	HU
<b>&gt; mounting diameters</b>	
Outside dimension, length	29.6 mm
Outside dimension, width	29.6 mm
Outside dimension, height	40.6 mm
Mounting hole	16.2 mm
Mounting depth	18 mm
Installation height	22.6 mm
<b>&gt; mechanical data</b>	
Actuation function	latching
Contact function	2 NC
Contact material	Gold
Resetting	by rotating
Fixing	Threaded ring
Solderability	Yes
Threaded ring torque, max.	0.8 Nm
Terminal on the rear	Flat quick-connect terminal 2.8 x 0.5 tin-plated
<b>&gt; electrical data</b>	
Rated insulation voltage	250 V
Operating voltage of the luminous element, min.	18 V
Operating voltage of the luminous element, max.	28 V
Rated voltage, min.	0.02 V
Rated voltage, max.	35 V
Rated voltage, max.	35 V DC / 100 mA
Voltage type	AC / DC
Rated operating voltage	0.02-30 V
Operating current of the luminous element, min.	8 mA
Operating current of the luminous element, max.	18 mA
Rated current, min.	0.001 A
Rated current, max.	0.1 A
Categories of use	AC-15 DC-13
<b>&gt; Specifications according to UL 60947</b>	
Rated voltage, max.	35 V DC / 100 mA
UL Enclosure Type Rating front side	type 1

## drawings

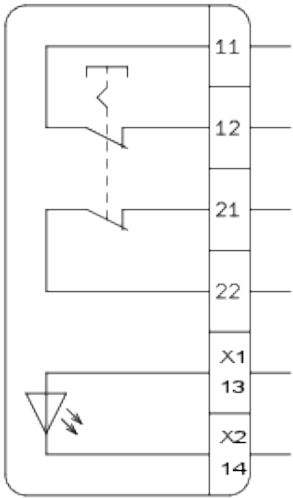
### Dimensioned drawing



### Mounting hole drawing



Schematic diagram



**Mode d'emploi auxiliaires de commande  
d'ARRÊT D'URGENCE (Traduction original)**