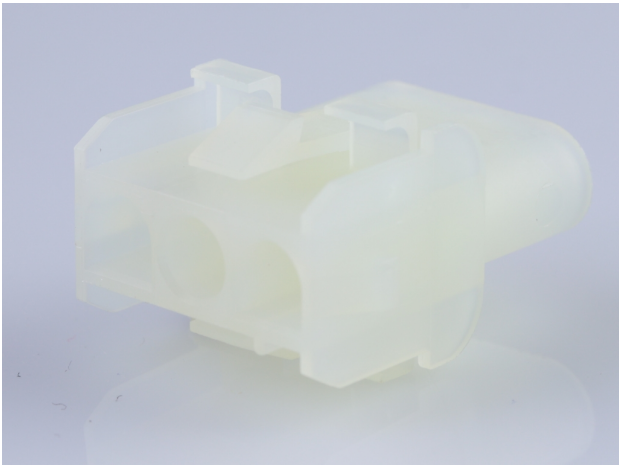




Part Number : [50842032](#)
Product Description : 2.13mm Diameter MLX
Pin and Socket Receptacle, 3 Circuits, Natural
Series Number : 42022
Status : Active
Product Category : Connector Housings
Engineering Number : 42022-3C



Documents & Resources

Drawings

[050842032_sd.pdf](#)
[PK-42022-XX-001.pdf](#)

3D Models and Design Files


[050842032_stp.zip](#)

Specifications

[PS-42022-0001-001.pdf](#)
[TS-42022-0001-001.pdf](#)

Product Environment Compliance

Compliance

GADSL/IMDS	Not Relevant
China RoHS	
EU ELV	Not Relevant
Low-Halogen Status	Low-Halogen per IEC 61249-2-21
REACH SVHC	Contains Melamine per D(2024)6225-DC (07 Nov 2024)
EU RoHS	Compliant per EU 2015/863

Multiple Part Product Compliance Statements

- Eu RoHS
- REACH SVHC

- Low-Halogen

Multiple Part Industry Compliance Documents

- IPC 1752A Class C

- IPC 1752A Class D

- Molex Product Compliance Declaration

- IEC-62474

- chemSHERPA (xml)

EU RoHS Certificate of Compliance

Part Details

General

Status	Active
Category	Connector Housings
Series	42022
Description	2.13mm Diameter MLX Pin and Socket Receptacle, 3 Circuits, Natural
Application	Power, Wire-to-Wire
Comments	Glow Wire Equivalent Part Number 366440003; Maximum current per contact 20A if used with 36663 and 36664 terminal
Product Name	MLX
UPC	800754386470

Agency

CSA	LR19980
UL	E29179

Physical

Circuits Detail	3
Circuits (maximum)	3
Color - Resin	Natural
Flammability	94V-0
Gender	Receptacle
Glow-Wire Capable	No
Keying to Mating Part	None

Lock to Mating Part	Yes
Material - Resin	Nylon
Net Weight	3.230/g
Number of Rows	1
Packaging Type	Carton
Panel Mount	Yes
Pitch - Mating Interface	6.35mm
Polarized to Mating Part	Yes
Stackable	No
Temperature Range - Operating	-55° to +105°C

Solder Process Data

Lead-Free Process Capability	N/A
------------------------------	-----

Mates With / Use With

Mates with Part(s)

Description	Part Number
2.13mm Diameter MLX Power Crimp Housing Plugs	<u>42021</u>

Use with Part(s)

Description	Part Number
Pre-Crimped Lead MLX Male-to-MLX Male, Tin (Sn) Plating, 150.00mm Length, 18 AWG, Black	<u>797582029</u>
Pre-Crimped Lead MLX Male-to-MLX Male, Tin (Sn) Plating, 300.00mm Length, 18 AWG, Black	<u>797582030</u>
Pre-Crimped Lead MLX Female-to-MLX Female, Tin (Sn) Plating, 150.00mm Length, 18 AWG, Black	<u>797582031</u>
Pre-Crimped Lead MLX Female-to-MLX Female, Tin (Sn) Plating, 300.00mm Length, 18 AWG, Black	<u>797582032</u>
MLX Male Crimp Terminals	<u>42023</u>
MLX Female Crimp Terminals	<u>42024</u>

This document was generated on Mar 09, 2025