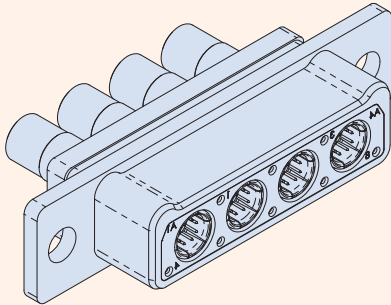


792-001S Plug Connectors

Snap-in, Rear Release Contacts



RELIABLE DESIGN

- 100% scoop-proof
- Snap-in, rear release contacts
- EMI shell-to-shell continuity

High-speed

- Quadrax or El Ochito® contacts (purchased separately)

Size 8 quadrax or El Ochito® octaxial contacts. Rugged construction. Ultraminiature. Series 792 connectors are intended for 10Gb Ethernet, USB 3.0 and other multi-gigabit protocols. 792-001S cable connectors feature machined aluminum shells with polarizing lobes and scoop-proof interface for problem-free mating. *size 8 quadrax and El Ochito® contacts are purchased separately.* "Combo" arrangements are supplied with unassembled size 23 crimp socket contacts. Military-grade materials, finishes and construction.

How To Order

	Sample Part Number → 792-001S	E-5W5	M	P
Product	792-001S = Cable Plug, Socket Contacts			
Insert Arrangement	See Table 2			
Shell Finish	M = Electroless Nickel MT = Nickel-PTFE			
Mating Hardware (Table 1)	N = Thru-Holes (no hardware) S = Short Screwlocks, Hex Head T = Long Screwlocks, Slot Head L = Short Jackscrews, Hex Head K = Long Jackscrews, Slot Head P = Female Jackposts			

Table 1 Mating Hardware

N No Hardware Thru-holes in flange	P Jackpost with nut and washer	L Short Jackscrew Hex head	K Long Jackscrew Slot head	S Short Screwlock Hex head	T Long Screwlock Slot head

Thread size is #8-32. 300 series stainless steel. Jackscrews and screwlocks are non-removeable. Screwlocks allow full connector mating before the screwlocks are tightened. Jackscrews must be tightened to mate the connectors.

Table 2 Insert Arrangements

Insert arrangement	Number of Contacts		Insert arrangement	Number of Contacts	
	#23	#8		#23	#8
A-1W1, A-1G1*		1	D-27W3	24	3
A-3W1	2	1	D-4W4, D-4G4*		4
B-23W1	22	1	D-12W4	8	4
B-2W2, B-2G2*		2	E-45W3	42	3
B-6W2	4	2	E-5W5, E-5G5*		5
C-24W2	22	2	E-15W5	10	5
C-3W3, C-3G3*		3	F-9W9, F-9G9*		9
C-9W3	6	3	F-31W9	22	9

Cavity identification numbers shown are for mating face of plug connectors with socket contacts.

* Insert arrangements with "G" designator are grounded type with metal insert. Insert arrangements with "W" designator have thermoplastic dielectric.

SERIES 792

High-Speed Ultraminiature Rectangular Connectors



792-001S Plug Connectors

Snap-in, Rear Release Contacts

Technical Data

Specifications

- Operating temperature: -65° to +150°C
- Current rating, size 23 contact: 5A
- Voltage rating (DWV): 750 Vac, size 23 1800 Vac size 8 body to connector shell
- Wire size, #23 contact: AWG 22-28
- Shock: EIA-364-27 condition D
- Vibration: EIA-364-28 condition V, letter E
- Insulation Resistance: 5000 MΩ min.
- Shell-to-shell resistance with EMI spring: 2.5 mΩ max.
- Altitude immersion: 75,000 feet

Construction

- Shell: aluminum alloy
- Metal insert: aluminum, nickel plated
- Insulators: high-grade rigid dielectric
- Contacts: copper alloy, 50 microinches gold over nickel plating
- Wire grommet: fluorosilicone blend
- Contact retention clip, insert retention clip: copper alloy
- EMI spring: copper alloy, nickel plated
- Hardware: 300 series stainless steel, passivated

Size 8 Datalink Socket Contacts (not supplied with Connector)



Differential Twinax
853-075



Quadrax
854-048



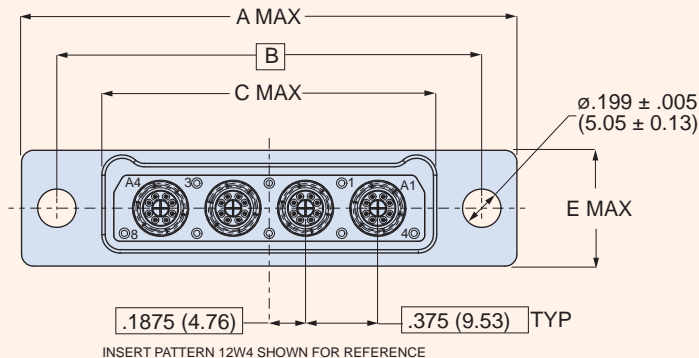
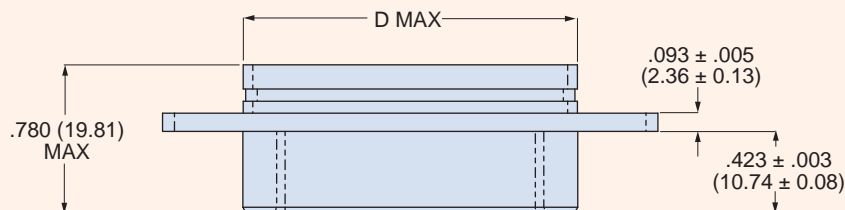
El Ochito Type I
10Gb Ethernet (White) 858-046
USB 3.0 (Blue) 858-048
HDMI, DisplayPort, SATA (Red) 858-050



El Ochito Type II
10Gb Ethernet (White) 858-042

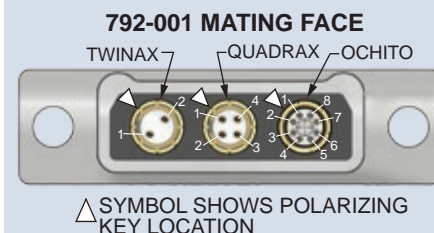
792-001S Dimensions

Shell Size	A Max		B Basic		C Max		D Max		E Max	
	In.	mm.	In.	mm.	In.	mm.	In.	mm.	In.	mm.
A	1.455	36.96	1.075	27.31	.615	15.62	.610	15.49	.630	16.00
B	1.830	46.48	1.450	36.83	.990	25.15	.985	25.02	.630	16.00
C	2.205	56.01	1.825	46.36	1.365	34.67	1.360	34.54	.630	16.00
D	2.580	65.53	2.200	55.88	1.740	44.20	1.735	44.07	.630	16.00
E	2.955	75.06	2.575	65.41	2.115	53.72	2.110	53.59	.630	16.00
F	2.955	75.06	2.575	65.41	2.115	53.72	2.110	53.59	.990	25.15



Polarizing Key Location and Contact Identification

Series 792 connectors have a polarizing keyway in size 8 contact cavities. This keyway orients and aligns twinax, quadrax and El Ochito® contacts with alignment keys. The connector keyway is rotated 45° from top dead center. These illustrations show the location of the polarizing key and the contact numbers when looking at the mating face of the plug (socket) connector.



Size 23 Socket Contacts

Contact	Crimper	Positioner
850-164	809-015 (M22520/2-01)	809-005

Insertion/Removal Tools

Insertion/Removal Tool for Size 23 Contact	Removal Tool for Size 8 Contacts
809-088	859-049 (M81969/14-12)