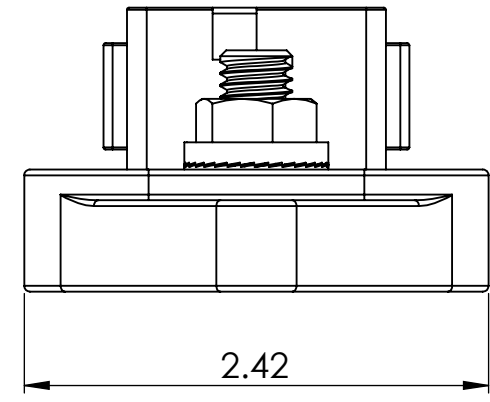
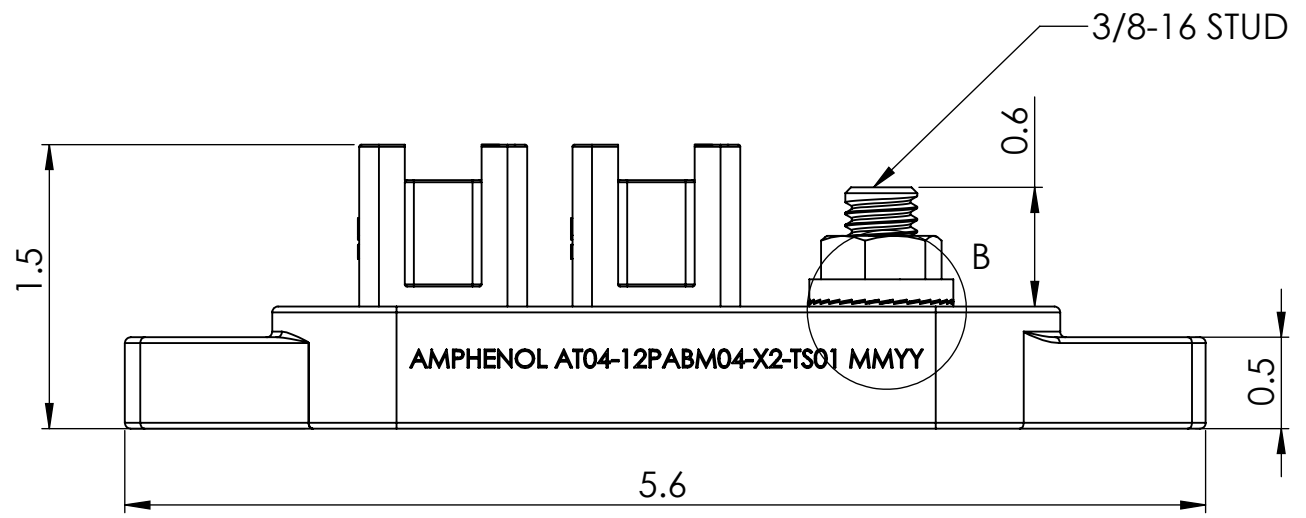
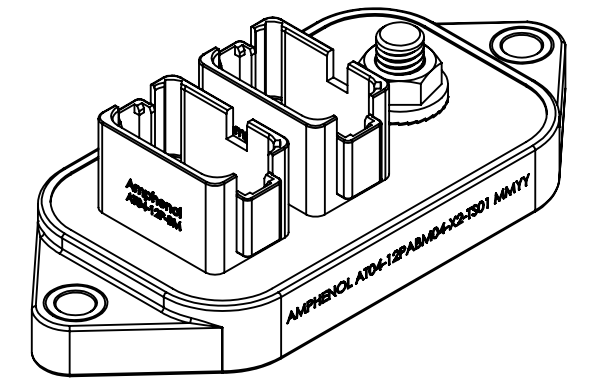
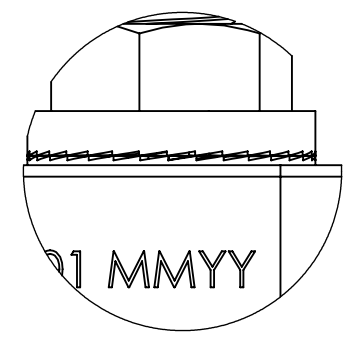
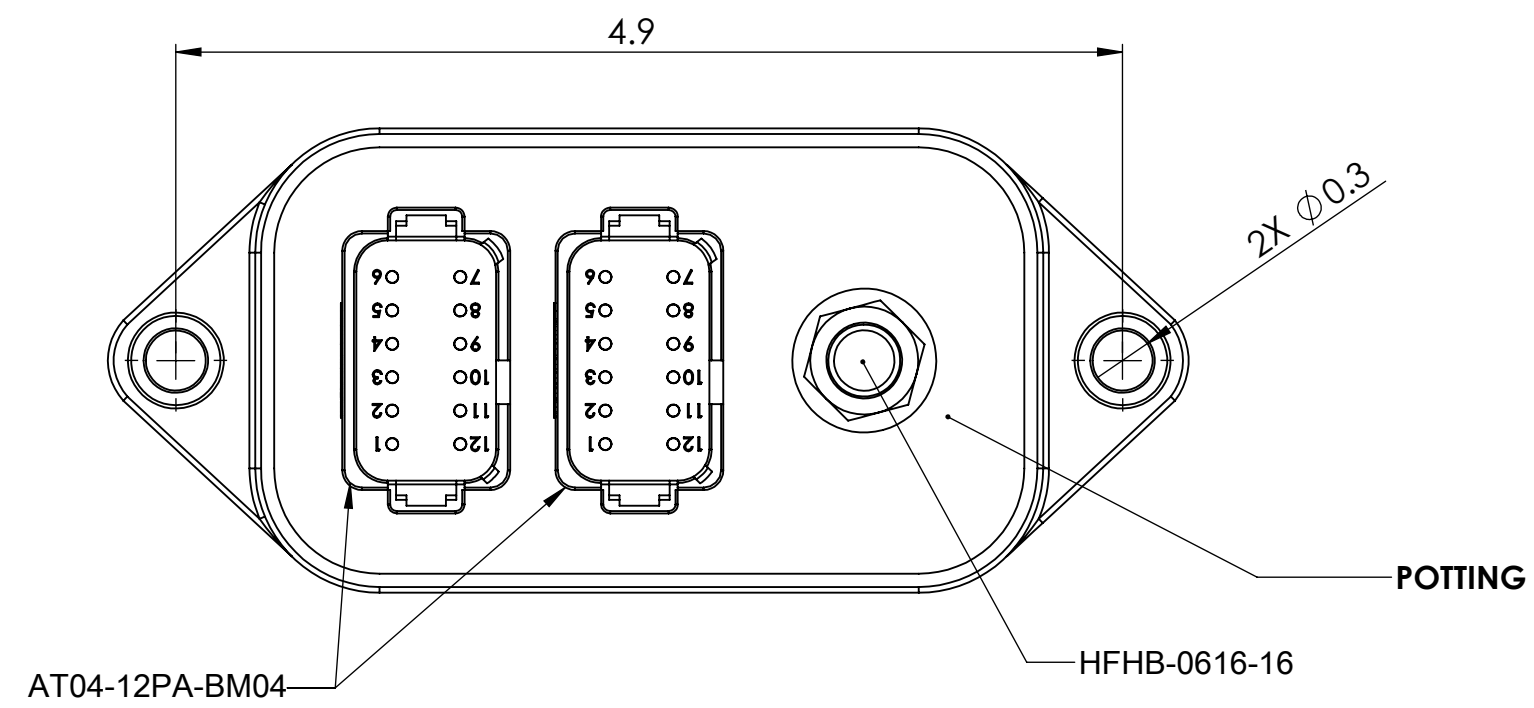


REVISIONS			
REV.	DESCRIPTION	DATE	BY
A1	RELEASE	8/23/2024	CE
A2	ADDED 3/8-16 FLANGE NUT	9/24/2025	CE
A3	CHANGED 3/8-16 NUT TO 3/8-16 FLANGE NUT	10/20/2025	CE



NOTES: UNLESS OTHERWISE SPECIFIED

- MATERIAL:
HOUSING: THERMOPLASTIC
CONTACT: COPPER ALLOY
SLEEVE: ALUMINUM; BLACK ANNOXIDIZED
- MODIFICATIONS: ALL 25 PINS BUSSED TOGETHER.
- SPECIFICATIONS:
 - CURRENT RATING: (HFHB-0616-16) 225 AMPS MAX.
(AT04-12PA-BM04) 13 AMPS MAX PER PIN.
 - OPERATING TEMPERATURE: -55°C TO +125°C
 - DIELECTRIC WITHSTANDING VOLTAGE: LESS THAN 2 MILLIAMPS CURRENT LEAKAGE @ 1500 VOLTS AC.
 - INSULATION RESISTANCE: 1000 MEGOHMS MIN @ 25°C.
 - IP68 (1M of water for a period of 24 hours, in mated condition) IP69K (in mated condition)
 - MATING CYCLE DURABILITY: 100 CYCLES
 - RoHS COMPLIANT
- MATING PART:
3/8-16 STUD
AT04-12PA-BM04: AT06-12SA-XXXX
- ALL DIMENSIONS ARE FOR REFERENCE USE ONLY.

UNLESS OTHERWISE SPECIFIED:		SIGNATURES		DATE	<h1>Amphenol</h1> <p>Sine Systems - www.amphenol-sine.com 44724 Morley Drive Clinton Township, MI 48036</p>
1) DIMENSIONS ARE IN METRIC (mm) 2) TOLERANCES ARE AS FOLLOWS: 1 PL DEC: ± 0.5 FRACTIONAL: ± 1/8 2 PL DEC: ± 0.25 ANGLES: ± 1° 3 PL DEC: ± 0.1 3) NOTE REFERENCE = Δ		DRAWN: CE		7/15/2024	
MATERIAL SPECIFICATIONS:		CHECKED:			DESCRIPTION: HYPERBUSS 225 AMP POWER SPLITTER STRAIGHT 24 POSITION, 16AWG, NICKEL, THREADED STUD, POTTED,
WEIGHT:		ENGINEER:			
DO NOT SCALE DRAWING		APPROVAL:			SIZE DWG NO: B AT04-12PABM04-X2-TS01 REV A3
				SCALE: NONE	SHEET 1 OF 1