

MVL-TEILE-NR. MVL-PART-NO.	DELPHI TEILE-NR. PART-NO.	ANSCHLUSS- BEREICH CRIMP SIZE (mm <sup>2</sup> )	CRIMP- CODE	DRAHTQUER- Schnitt WIRE SIZE (mm <sup>2</sup> )	ISOLATION D INSULATION D (mm)	L ±0.4	DRAHTCRIMP WIRE CRIMP		ISOLATIONS CRIMP INSULATIONS CRIMP		LI	EINZELADERDICHTUNG (EAA) SINGLE WIRE SEAL (SWS)				KAMMER-Ø CAVITY-Ø (mm)	MVL- APPLICATOR	
							CW <sub>H</sub>	CW <sub>C</sub> ±0.05	CH <sub>1</sub> ±0.05	CW <sub>1</sub>		CRIMP-TYPE	FCI-NR. FCI-NO.	VERITAS-NR. VERITAS-NO.	FARBE COLOR			ISOLATIONS-Ø INSULATION-Ø
6 000 04 11/14 6 000 06 11/14 6 000 06 17 6 000 12 11/14 6 000 15 14 6 000 30 14 6 010 01 11/14 6 010 07 11/14 6 010 13 14 6 010 20 11/14 F922100	10864925, 15504421 10763184, 33500650 33504728 33504729, 13547706 33504730 33504731 13739271, 15510049 10756349, 33511802 33504732 10866291, 33504733 33504734	>0.22-0.35	□	0.25 AWG 22 TXL 1.45-1.65	1.1-1.2 1.45-1.65	TBD 3.8	TBD 1.01±0.03	TBD 1.67	TBD 3.10	TBD 3.25±0.15	TBD 0.30 <sup>+0.2</sup>	TBD 6 099 39 13	TBD 17 786	TBD ROT RED	TBD 1.1-1.6	TBD 6 520 04 13		
6 000 04 31/34 6 000 06 31/34 6 000 06 37 6 000 12 31/34 6 000 15 34 6 000 30 34 6 010 01 31/34 6 010 07 31/34 6 010 13 34 6 010 20 31/34 F032100	10864926, 15510048 10763185, 10779704 33523637 13830557, 10847167 10811962 33503449 10864931, 13760268 10756350, 10779703 33504736 10863772, 33504737 33504738	0.5-1.0	□□	0.50 AWG20 TXL 1.6-1.8 0.75 1.7-1.9 AWG18 TXL 1.9- 2.15 1.00 1.9-2.1	1.4-1.6 1.6-1.8 1.7-1.9 1.9- 2.15 1.9-2.1	4.3 4.3 4.3	1.17 ±0.04 1.2 ±0.04 1.20±0.04 1.25±0.04 1.25±0.04	2.07 2.08 2.08 2.08 2.08	3.15 3.20 3.20 3.25 3.25	(L) 3.30±0.15	UMFASSUNGS- CRIMP WRAP- CRIMP	0.4±0.2 0.4±0.2 0.4±0.2	6 099 39 13 6 099 39 28 6 099 39 34	17 786 17 541 17 843	ROT RED GRAU GREY GELB YELLOW	1.1-1.6 1.6-1.9 1.9-2.4	Delphi -ZEICHN. 9 000 03 10 3.6 <sup>+0.05</sup> -0.1	6 520 04 14 6 520 04 14 6 520 04 14
6 000 06 41/44 6 000 06 47 6 000 12 41/44 6 000 30 44 6 010 07 41 6 010 20 41/44 F132100	10768667, 33504739 33504740 33504741, 33504742 33504743 10768666 33504744, 33504745 33504746	>1-1.5	□□□	AWG16 TXL 1.4 2.2-2.4 1.5 2.2-2.4	2.05-2.3 2.2-2.4	4.3	1.28±0.05 1.33±0.05 1.38±0.05	2.35 2.37 2.37	3.4 3.43 3.43	3.35±0.1 3.35±0.1 3.35±0.1	0.4±0.2	6 099 39 34	17 843	GLEB YELLOW	1.9-2.4	6 520 04 15 Rev. B (L)		

(L) (L) (L) (L)

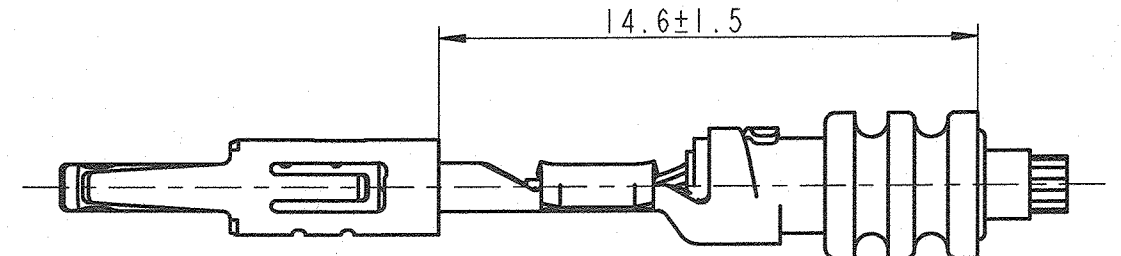
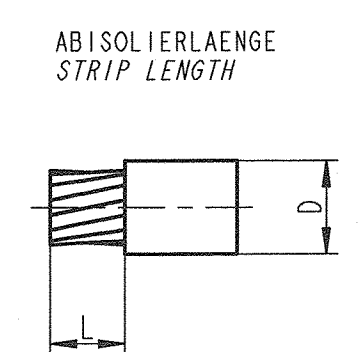
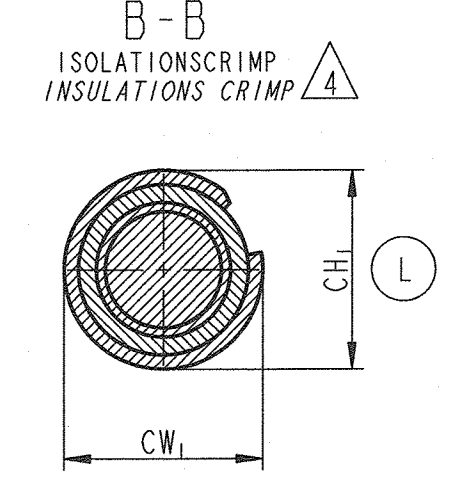
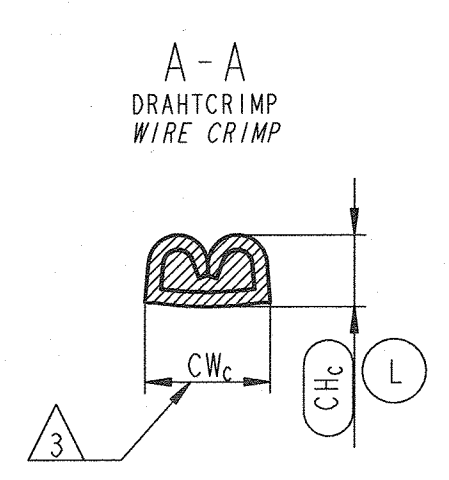
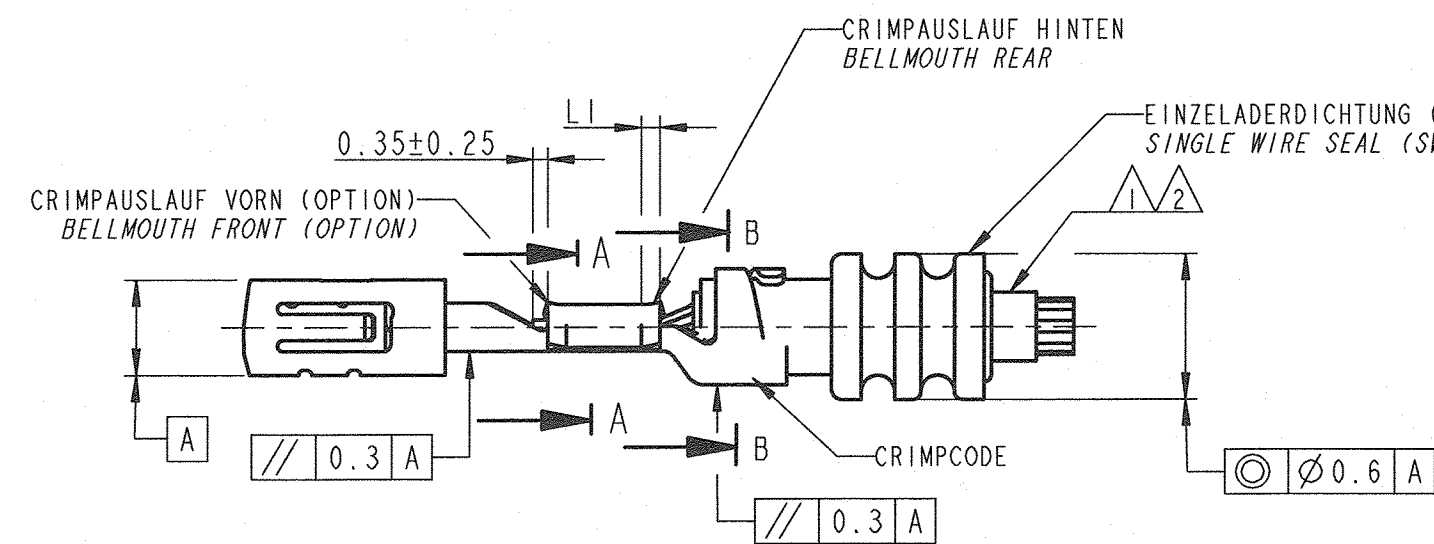


BILD1. FLACHKONTAKT DCS2-1.5 MIT EINZELDICHTUNG  
PICTURE1. FEMALE TERMINAL DCS2-1.5 WITH SINGLE WIRE SEAL

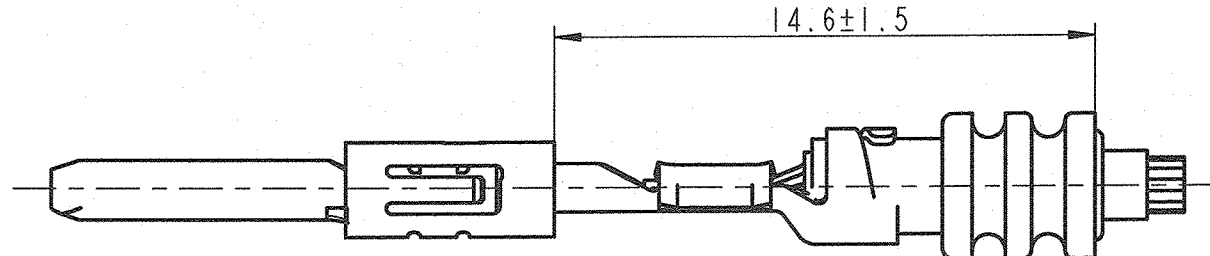
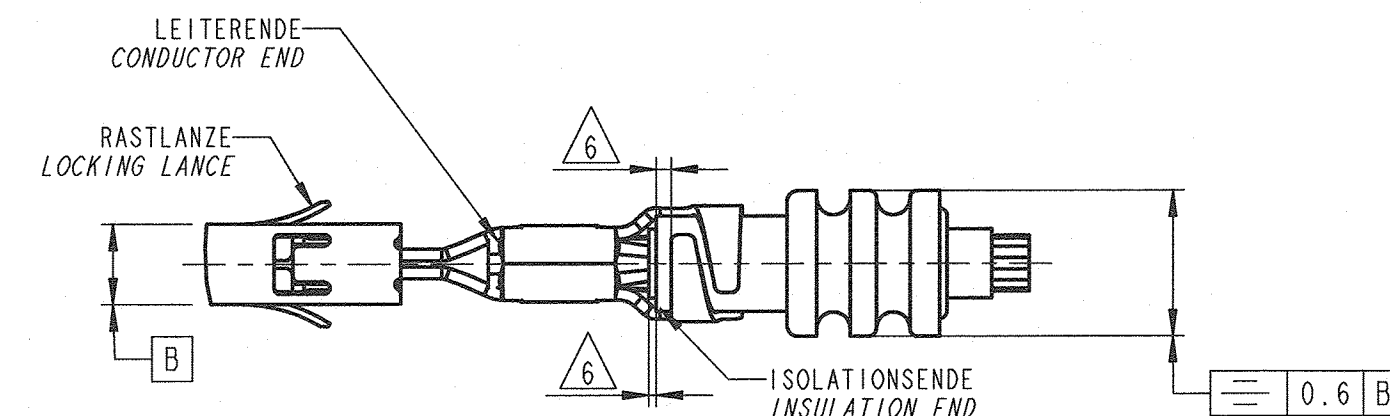


BILD2. FLACHSTECKER DCS2-1.5 MIT EINZELDICHTUNG  
PICTURE2. MALE TERMINAL DCS2-1.5 WITH SINGLE WIRE SEAL



- BEMERKUNGEN / NOTES**
- LEITUNGEN FLR NACH DIN 72551-6, AUSGENOMMEN DIE AWG-LEITUNGEN  
WIRE TYPES FLR DIN 72551-6 UNLESS AWG- WIRES/ CABLES
  - AUSREISSKRAFT DES LEITERS AUS DEM DRAHTCRIMP SIEHE: / EXTRACTION FORCE OF WIRE OUT THE WIRE CRIMP SEE: DIN EN 60 352-2.
  - CW<sub>C</sub> EFFEKTIVE CRIMPBREITE DRAHTCRIMP / EFFECTIVE CRIMP WIDTH WIRE CRIMP
  - DIE VERWENDUNG DER EINZELDICHTUNGEN IST ABHÄNGIG VOM ISOLATIONS-DURCHMESSER DER LEITUNG UND NICHT VOM LEITUNGSQUERSCHNITT. DURCH DEN CRIMPVORGANG DARF DIE EINZELDICHTUNG IM BEREICH DES BUNDDURCHMESSERS NICHT EINGESCHNITTEN ODER VERLETZT WERDEN. DRUCKSTELLEN UND MARKIERUNGEN SIND ZULÄSSIG, WENN SIE NICHT ZUR RISSBILDUNG ODER DURCHTRENNEN DER DICHTUNG FÜHREN.  
THE APPLICATION OF SINGLE WIRE SEALS IS DEPENDS ON THE INSULATION DIAMETER AND NOT FROM THE WIRE SECTION. AFTER CRIMPING THE SWS DO NOT HAVE VISIBLE CUTS OR NOTCHES AROUND THE DIAMETER OF COLLAR. ONLY PRESSURE POINTS OR MARKS ALLOWED, WHICH CAN NOT CAUSE TEARING OR SPLITTING OF IN THE LONG TERM.
  - ES GELTEN DIE ALLGEMEINEN RICHTLINIEN ZUR VERARBEITUNG VON KONTAKTEN MIT OFFENEN CRIMPHUELSEN NACH DELPHI- VERARBEITUNGSSPEZIFIKATION 9 902 0020, DIE ALLGEMEINEN RICHTLINIEN ZUR VERARBEITUNG VON EINZELDICHTUNGEN 9 902 00 30 SOWIE DIE DIN EN 60 352-2. GENERAL GUIDLINES FOR THE APPLICATION OF CONTACTS WITH OPEN CRIMP BARRELS IS VALID TO DELPHI SPECIFICATION: 9 902 00 20, THE GENERAL GUIDLINES FOR APPLICATIONS WITH SINGLE WIRESEALS 9 902 00 30 AND DIN EN 60352-2.

16-18104	05..07.16	L	Column Delphi-part no. added; CWI for 0.5mm <sup>2</sup> -1mm <sup>2</sup> was 3.35±0.15; LI for 0.35mm <sup>2</sup> was 0.25±0.15; crimp-parameter for wire range (>1-1.5)mm <sup>2</sup> were reworked complete; new wire crimp width for the wire crimp punch and anvil was for the wire range (>1-1.5)mm <sup>2</sup> necessary; CH1 was SC-dimension; CWI was (CWI);	P. Nuetzel	R. Reger	St. Müller
14-06082	20.05.14	/	CHC and CWC were complete changed; the values CHC were as follow: 0.35mm <sup>2</sup> was 1.06±0.03; 0.5mm <sup>2</sup> and AWG 20 was 1.2±0.05; 0.75mm <sup>2</sup> was 1.27±0.05 and AWG 18 was 1.28±0.05; 1.0mm <sup>2</sup> was 1.35±0.05; the values CWC was for the crimp range(>0.2-0.35)mm <sup>2</sup> 1.6±0.25 and for the both other ranges 2.0±0.25; CH1 and CWI were changed too, the values for CH1 were as follow: 0.35mm <sup>2</sup> was 3.2±0.1; AWG22 was 3.2±0.15; 0.5mm <sup>2</sup> was 3.3±0.15; AWG 20 was 3.25±0.15; 0.75mm <sup>2</sup> was 3.35±0.15; AWG18 was 3.25±0.25; 1mm <sup>2</sup> was 3.4±0.15; 1.5mm <sup>2</sup> was 1.35±0.1 the values CWI were as follow: 0.35mm <sup>2</sup> was 3.1±0.2; for 0.5mm <sup>2</sup> until 1.0 mm <sup>2</sup> were the values 3.2±0.25; 1.5mm <sup>2</sup> was 3.35±0.1; Position toleranz © was 0.8; Position toleranz = was 0.8	St. Müller	P. Nuetzel	F. Pacher

ECN-NO. EKN NUMBER	DATE DATUM	DD / MM / YY	REVISION INDEX	POSITION POSITION	CHANGE DESCRIPTION ÄNDERUNG	DRAWN BY GEZ.	CHK. BY GEZ.	APPR. BY GEZ.
---	---	---	---	---	---	---	---	---

PRODUCT SPEC. PRODUKT-SPEZIFIK.	PACKAGING SPEC. VERPACKUNGS-SPEZIFIK.	APPLICATION SPEC. ANWENDUNGS-SPEZIFIK.	COPYRIGHT DELPHI CORPORATION AND/OR ITS AFFILIATES. ALL RIGHTS RESERVED. REVISED THIS DRAWING IS THE PROPERTY OF DELPHI CORPORATION. THE REPRODUCTION, DISTRIBUTION AND UTILIZATION OF THIS DOCUMENT OR ITS RELATED CAD DATA, AS WELL AS COMMUNICATION OF ANY CONTENT TO OTHERS, WITHOUT EXPRESS AUTHORIZATION IS PROHIBITED.	DELPHI CORPORATION AND/OR ITS AFFILIATES. ALL RIGHTS RESERVED. REVISED THIS DRAWING IS THE PROPERTY OF DELPHI CORPORATION. THE REPRODUCTION, DISTRIBUTION AND UTILIZATION OF THIS DOCUMENT OR ITS RELATED CAD DATA, AS WELL AS COMMUNICATION OF ANY CONTENT TO OTHERS, WITHOUT EXPRESS AUTHORIZATION IS PROHIBITED.
---	---	---	---	---

TOLERANCES TOLERANZEN	MATERIAL MATERIAL	SURFACE FINISH OBERFLÄCHE	CAD SYSTEM
---	---	---	DELPHI

CONTRACT NO. GESAMTER N.	COLOR FARBE	TOOL NO. WERKZEUG-Nr.	ECO Loc. Code STANDORT CODE	ISO PROJECTION BEMASSUNG IN MILLIMETER	DIMENSION IN MILLIMETERS BEMASSUNG IN MILLIMETER	PROJ. / eng.	DWG SIZE FORMAT	SHEET BLATT
---	---	---	GN	---	---	---	A2	1 of 3

DO NOT SCALE DRAWING ZEICHNUNG NICHT VERMESSEN	TITLE BETREFFUNG	ECO Loc. Code STANDORT CODE	DRAWING NUMBER ZEICHN. NUMMER	FILE NAME DATEI NAME
---	CRIMP-SPEC. FLKT. UND FLST. DCS2-1.5 WP CRIMP SPEC. FEMALE AND MALE DCS2-1.5 WP	---	9 084 10 00	90841000_L.C

DATE DATUM	NAME NAME	ESR NO. ESR NUMBER	CAT. NO. KATALOG-Nr.
26.03.08	A. Bauer	---	---
26.03.08	P. Nuetzel	---	---
26.03.08	J. Muehl	---	---

EUR C04 112 F29

MVL-TEILE- NR. MVL-PART- NO.	DELPHI TEILE-NR. PART-NO.	ANSCHLUSS- BEREICH CRIMP SIZE (mm <sup>2</sup> )	CRIMP- CODE	DRAHTQUER- SCHNITT WIRE SIZE (mm <sup>2</sup> )	ISOLATION INSULATION D (mm)		DRAHTCRIMP WIRE CRIMP		ISOLATIONS INSULATIONS CRIMP		LI	MVL-APPLIKATOR MVL-APPLICATOR
					±0.4	±0.4	CH <sub>C</sub>	CW <sub>C</sub> ±0.05	CH <sub>I</sub> ±0.05	CW <sub>I</sub> ±0.15		
6 000 03 11/14 6 000 05 11/14 6 000 13 14 6 010 02 11/14 6 010 06 11/14 6 010 14 14 6 010 19 11/14 F088000 F188000 F288000	10864924, 15510047 10763182, 10751588 33504747 10864932, 13539675 10775249, 10751586 33504723 10866290, 33504724 33511723 33504748 33504749	>0.22-0.35	□	0.25 AWG 22 TXL 0.35	TBD 1.45-1.65 1.2-1.4	TBD 3.8	TBD 1.01±0.03	TBD 1.67 1.67	TBD 2.00±0.05 1.75±0.05	TBD 2.1 1.95	0.3 <sup>+0.2</sup>	6 520 04 10
6 000 03 31/34 6 000 05 31/34 6 000 13 34 6 010 02 31/34 6 010 06 31/34 6 010 14 34 6 010 19 31/34 F388000 F488000 F588000	15365811, 13539674 15380673, 10751587 33504750 10864947, 13665836 10756897, 10751589 33504725 10863773, 33504726 33511724 33504751 33504752	0.5-1.0	□□	0.50 AWG20 TXL 0.75 1.00	1.4-1.6 1.6-1.8 1.7-1.9 1.9-2.1	4.3	1.17 ±0.04 1.17±0.04 1.2±0.04 1.25±0.04	2.07 2.08 2.08 2.08	1.95±0.05 2.15±0.05 2.25±0.05 2.45±0.05	2.30 2.30 2.35 2.45	0.4±0.2	6 520 04 11
6 000 05 41/44 6 000 13 44 6 010 06 41 6 010 19 41/44 F688000 F788000 F888000	10769219, 33504753 33504754 10769218 33504755, 33504727 33511725 33504756 33504757	>1-1.5	□□□	AWG16 TXL 1.4 1.5	2.05-2.3 2.2-2.4 2.2-2.4	4.3	1.28±0.05 1.33±0.05 1.38±0.05	2.35 2.37 2.37	2.6 ±0.05 2.75±0.05 2.75±0.05	2.70 2.8 2.8	0.4±0.2	6 520 04 12 Rev. B

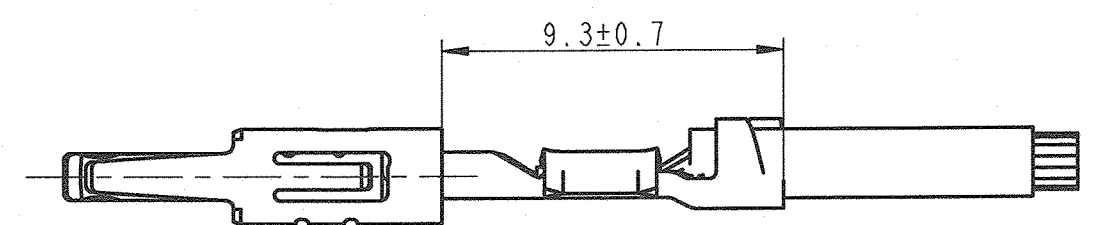


BILD 1: FLACHKONTAKT DCS2-1.5 NORMALE ANWENDUNG  
PICTURE 1: FEMALE TERMINAL DCS2-1.5 NORMAL APPLICATION

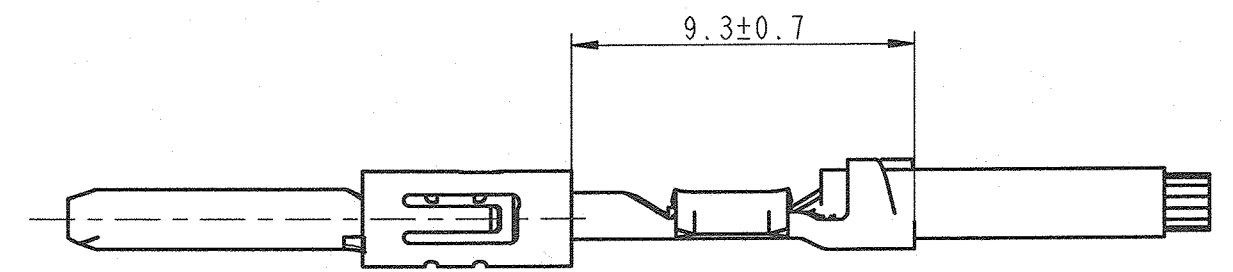
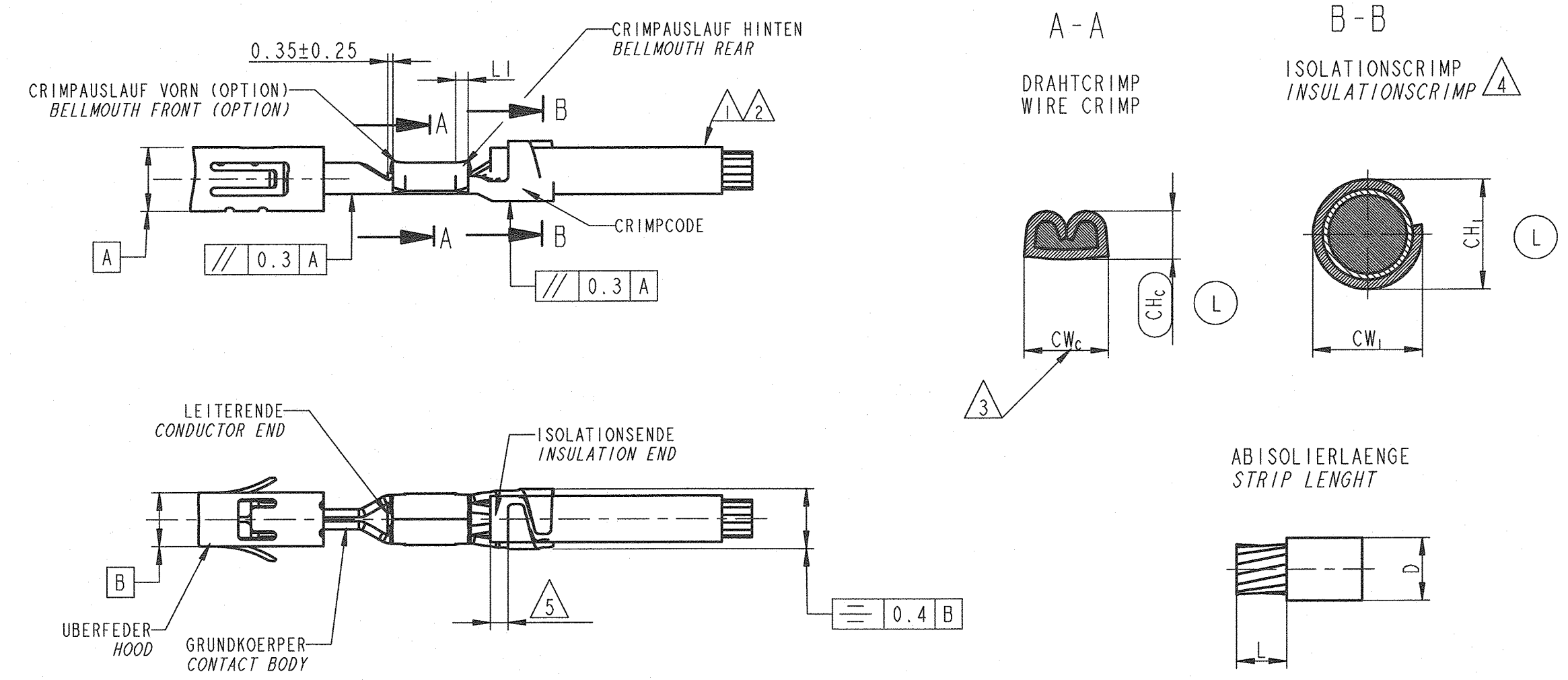


BILD 2: FLACHSTECKER DCS2-1.5 NORMALE ANWENDUNG  
PICTURE 2: MALE TERMINAL DCS2-1.5 NORMAL APPLICATION



ECH-NO. ECH NUMBER	DATE DATUM	DD/ MM / YY	REVISION INDEX	POSITION POSITION	CHANGE DESCRIPTION ÄNDERUNG	DRAWN BY GEZ.	CHK. BY APPR.	APPR. BY GER.
16-18104	05.07.16		L	F-H 8 H7 G8 D6	Column Delphi part no. added; CWI had a tolerance field ±0.1; LI for wire range (>0.22-0.35)mm <sup>2</sup> was 0.25±0.15; was CWI for 0.5mm <sup>2</sup> was 2.15 and for 1mm <sup>2</sup> was CWI 2.35; wire crimp height and wire crimp width were changed for the wire crimp range (>1-1.5)mm <sup>2</sup> ; new applicator is necessary for (>1-1.5)mm <sup>2</sup> ; section A-A: CHC was SC- dimension; Section B-B: CHI was (CHI)	P. Nuetzel	R. Reger	St. Müller
14-06082	20.05.14		X		CHC and CWC were complete changed; the values CHC were as follow: 0.35mm <sup>2</sup> and AWG22 was 1.06±0.03; 0.5mm <sup>2</sup> and AWG 20 was 1.2±0.5; 0.75mm <sup>2</sup> was 1.27±0.05; 1.0mm <sup>2</sup> was 1.35±0.05; the values CWC was for the crimp range (>0.2-0.35) mm <sup>2</sup> 1.6±0.25 and for the 2 other crimp ranges 2.0±0.25; the insulation crimp height CHI was as follow: for 0.35mm <sup>2</sup> and AWG22- 1.8±0.2; for 0.5- 1.95±0.1/-0.05, for AWG 20- 2.1, for 0.75- 2.25±0.1/-0.05 for 1mm <sup>2</sup> - 2.45±0.1/-0.05; for AWG16 was the value 2.7±0.1; for 1.4mm <sup>2</sup> - and 1.5mm <sup>2</sup> - 2.7±0.1; Values for CWI were as follow: 0.35 mm <sup>2</sup> and AWG 22: 1.8±0.2 (0.5-1.0)mm <sup>2</sup> and AWG 20: 2.2±0.3 (>1-1.5)mm <sup>2</sup> and AWG 16: 2.8±0.05	St. Müller	P. Nuetzel	F. Pacher

**BEMERKUNGEN / NOTES**

1 LEITUNGEN FLR NACH DIN 72551-6, AUSGENOMMEN DIE AWG-LEITUNGEN  
WIRE TYPES FLR DIN 72551-6 UNLESS AWG- WIRES/ CABLES

2 AUSREISSKRAFT DES LEITERS AUS DEM DRAHTCRIMP SIEHE: 1 EXTRACTION FORCE OF WIRE OUT THE WIRE CRIMP SEE: DIN EN 60 352-2.

3 CW<sub>C</sub> EFFEKTIVE CRIMPBREITE DRAHTCRIMP / EFFECTIVE CRIMP WIDTH WIRE CRIMP

4 ES GELTEN DIE ALLGEMEINEN RICHTLINIEN ZUR VERARBEITUNG VON KONTAKTEN MIT OFFENEN CRIMPHUELSEN NACH DELPHI- VERARBEITUNGS-  
SPEZIFIKATION 9 902 0020 UND DIE DIN EN 60 352-2.  
GENERAL GUIDLINES FOR THE APPLICATION OF CONTACTS WITH OPEN CRIMP BARRELS IS VALID TO DELPHI SPECIFICATION: 9 902 00 20 AND DIN EN 60352-2.

PRODUCT SPEC. PRODUKT SPEZIFIK.	PACKAGING SPEC. VERPACKUNGS SPEZIFIK.	APPLICATION SPEC. ANWENDUNGS SPEZIFIK.	COPYRIGHT	DELPHI CORPORATION AND/OR ITS AFFILIATES. ALL RIGHTS RESERVED. REVISED THIS DRAWING IS THE PROPERTY OF DELPHI CORPORATION. THE REPRODUCTION, DISTRIBUTION AND UTILIZATION OF THIS DOCUMENT OR ITS RELATED CAD DATA, AS WELL AS COMMUNICATION OF ANY CONTENT TO OTHERS, WITHOUT EXPRESS AUTHORIZATION IS PROHIBITED.	DELPHI CORPORATION ARCHITECTURE NÜRNBERG GERMANY	pro / eng.
---	---	---	---	---	---	---
TOLERANCES -- TOLERANZEN --	DATE DATUM	NAME NAME	TITLE BENENNUNG	ECO Loc. Code STANDORT CODE	ISO PROJECTION ISO. PROJEKTION	DWG SIZE FORMAT
---	26.03.08	A. Bauer	CRIMP- SPEZ. FLKT. UND FLST. DCS2-1.5 NWD	GN	1st	A2
COUNTERPART No. GEGENSTÜCK Nr.	CHECKED BY GEPRÜFT VON	DATE DATUM	APPROVED BY GEBILDIGT VON	FILE NAME DATEI NAME	DRAWING NUMBER ZEICHN. NUMMER	SHEET BLATT
---	26.03.08	26.03.08	J. Muehl.	9 084 10 00	9 084 10 00	2 of 3
---	---	---	---	---	---	SCALE M: 10:1

EUR C04 112 F29

MVL-TEILE-NR. MVL-PART-NO.	DELPHI TEILE-NR. PART-NO.	ANSCHLUSS- BEREICH CRIMP SIZE (mm <sup>2</sup> )	CRIMP- CODE	DRAHTQUER- SCHNITT WIRE SIZE (mm <sup>2</sup> )	ISOLATION D INSULATION D (mm)	L ±0.4	DRAHTCRIMP WIRE CRIMP CH <sub>C</sub> ±0.04 CW <sub>C</sub> ±0.05	ISOLATIONS- CRIMP INSULATIONS CRIMP CH <sub>I</sub> ±0.05 CW <sub>I</sub> ±0.15	CRIMP TYPE	LI±0.2	EINZELADERDICHUNG (EAA) SINGLE WIRE SEAL (SWS)	MVL-NR. MVL-NO.	VERITAS-NR. VERITAS-NO.	FARBE COLOR	ISOLATIONS-Ø INSULATION-Ø	MVL-APPLIKATOR MVL-APPLICATOR	
6 000 12 34	10847167																
6 000 15 34	10811962																
6 010 01 34	13760268	0.5-1.0	00	0.50	1.4-1.6	4.3	1.17	2.07	3.15	3.20	UMFASSUNGS- CRIMP WRAP CRIMP	0.4	6 099 39 28	17 541	GRAU GREY	1.4-1.9	6 520 04 14
6 010 13 34	33504736																
6 010 07 34	10779703																

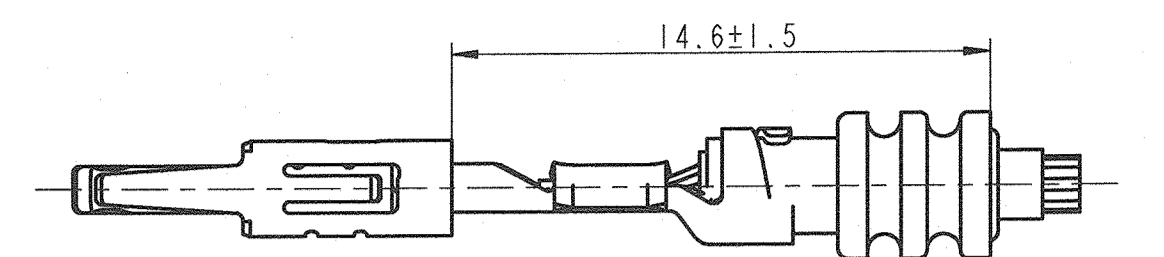


BILD1. FLACHKONTAKT DCS2-1.5 MIT EINZELDICHUNG  
PICTURE 1. FEMALE TERMINAL DCS2-1.5 WITH SINGLE WIRE SEAL

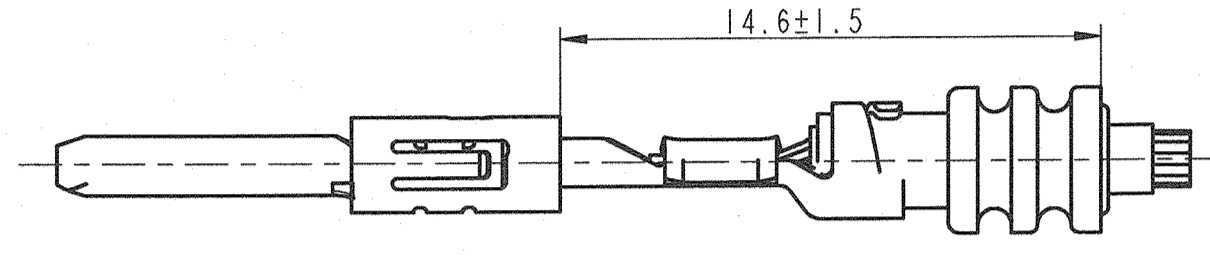
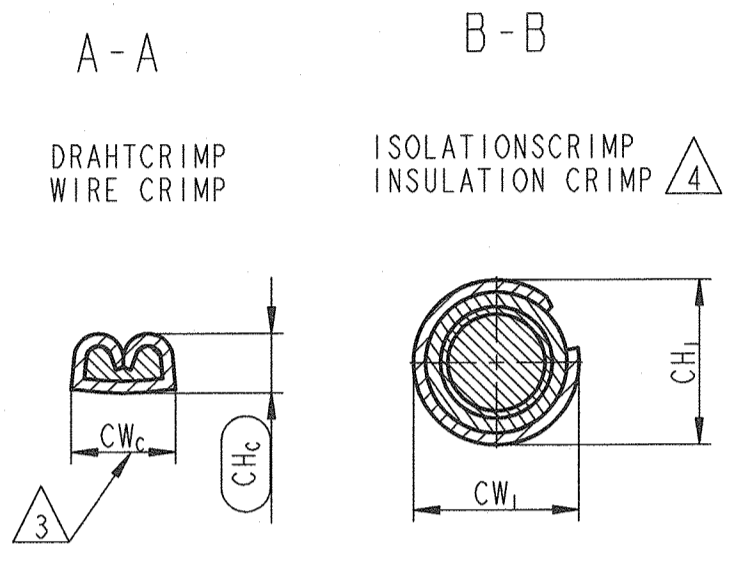
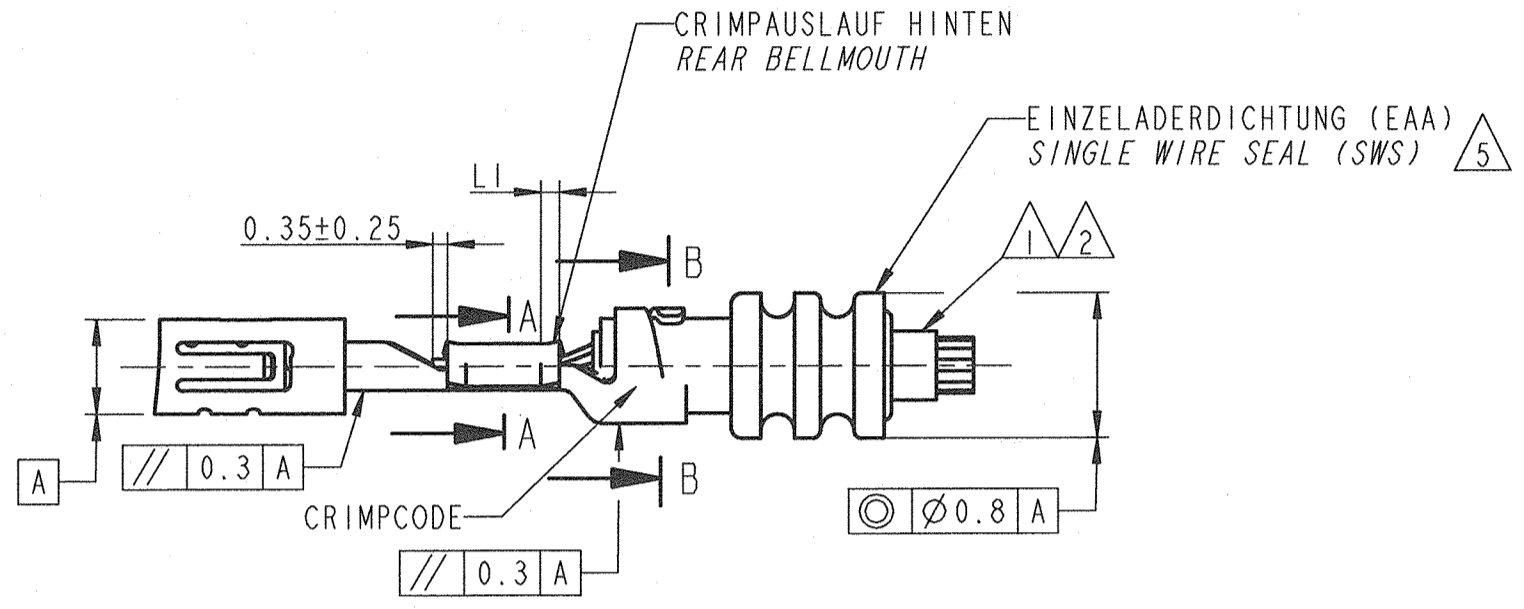
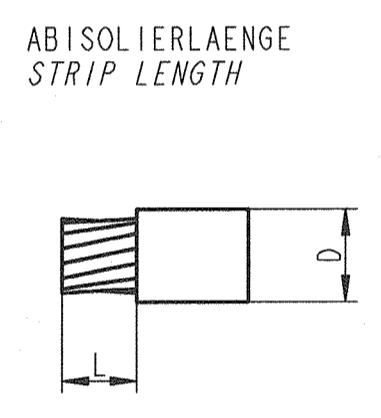
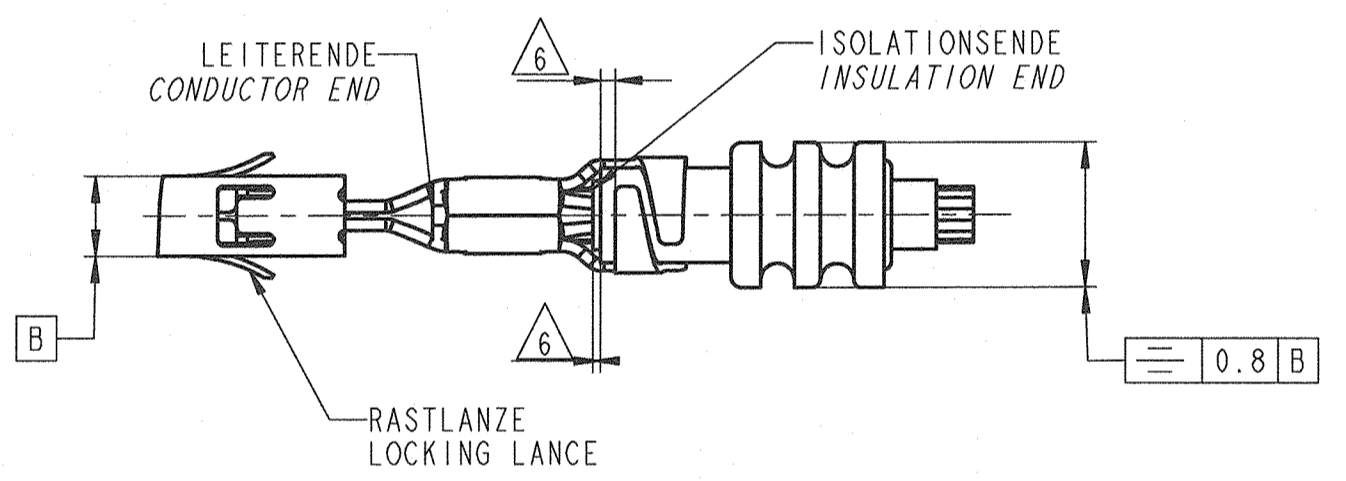


BILD2. FLACHSTECKER DCS2-1.5 MIT EINZELDICHUNG  
PICTURE 2. MALE TERMINAL DCS2-1.5 WITH SINGLE WIRE SEAL



NUR GÜLTIG NUR FÜR SONDERANWENDUNG DELPHI/ FRANCE  
ONLY AVAILABLE FOR SPECIAL APPLICATION DELPHI/ FRANCE

BEMERKUNGEN / NOTES

- 1 LEITUNGEN FLR NACH DIN 72551-6, AUSGENOMMEN DIE AWG-LEITUNGEN  
WIRE TYPES FLR DIN 72551-6 UNLESS AWG- WIRES/ CABLES
- 2 AUSREISSKRAFT DES LEITERS AUS DEM DRAHTCRIMP SIEHE: 1 EXTRACTION FORCE OF WIRE OUT THE  
WIRE CRIMP SEE: DIN EN 60 352-2.
- 3 CW<sub>C</sub> EFFEKTIVE CRIMPBREITE DRAHTCRIMP / EFFECTIVE CRIMP WIDTH WIRE CRIMP
- 4 DIE VERWENDUNG DER EINZELDICHUNGEN IST ABHÄNGIG VOM ISOLATIONS-DURCHMESSER DER LEITUNG UND NICHT VOM LEITUNGSQUERSCHNITT. DURCH DEN CRIMPVORGANG DARF DIE EINZELDICHUNG IM BEREICH DES BUNDDURCHMESSERS NICHT EINGESCHNITTEN ODER VERLETZT WERDEN. DRUCKSTELLEN UND MARKIERUNGEN SIND ZULÄSSIG, WENN SIE NICHT ZUR RISSBILDUNG ODER DURCHTRENNEN DER DICHTUNG FÜHREN.  
THE APPLICATION OF SINGLE WIRE SEALS IS DEPENDS ON THE INSULATION DIAMETER AND NOT FROM THE WIRE SECTION. AFTER CRIMPING THE SWS DO NOT HAVE VISIBLE CUTS OR NOTCHES AROUND THE DIAMETER OF COLLAR. ONLY PRESSURE POINTS OR MARKS ALLOWED, WHICH CAN NOT CAUSE TEARING OR SPLITTING OF IN THE LONG TERM.
- 5 ES GELTEN DIE ALLGEMEINEN RICHTLINIEN ZUR VERARBEITUNG VON KONTAKTEN MIT OFFENEN CRIMPHUELSEN NACH DELPHI- VERARBEITUNGS-SPEZIFIKATION 9 902 0020, DIE ALLGEMEINEN RICHTLINIEN ZUR VERARBEITUNG VON EINZELDICHUNGEN 9 902 00 30 SOWIE DIE DIN EN 60 352-2. GENERAL GUIDLINES FOR THE APPLICATION OF CONTACTS WITH OPEN CRIMP BARRELS IS VALID TO DELPHI SPECIFICATION: 9 902 00 20, THE GENERAL GUIDLINES FOR APPLICATIONS WITH SINGLE WIRESEALS 9 902 00 30 AND DIN EN 60352-2.

16-1804	05.07.16	L	Column with Delphi part no. added (see table); CW <sub>I</sub> was 3.25±0.15	P. Nuetzel	R. Reger	St. Müller		
<del>14-00082</del>	20.005.14	K	CHW WAS 1.2±0.05 and CW <sub>W</sub> was 2±0.25;	St. Müller	P. Nuetzel	F. Pacher		
<del>12-00079</del>	15.02.12	H	CH <sub>I</sub> was changed to 3.3±0.15; Notes were updated					
ECN-NO. ECN NUMBER	DATE DATUM	REVISION INDEX	POSITION POSITION	CHANGE DESCRIPTION ÄNDERUNG		DRAWN BY GEZ.	CHK. BY GEZ.	APPR. BY GEZ.
PRODUCT SPEC. PRODUKT SPECIFIK.	PACKAGING SPEC. VERPACKUNGS SPECIFIK.	APPLICATION SPEC. ANWENDUNGS SPECIFIK.	COPYRIGHT DELPHI CORPORATION AND/OR ITS AFFILIATES. ALL RIGHTS RESERVED. REVISED THIS DRAWING IS THE PROPERTY OF DELPHI CORPORATION. THE REPRODUCTION, DISTRIBUTION AND UTILIZATION OF THIS DOCUMENT OR ITS RELATED CAD DATA, AS WELL AS COMMUNICATION OF ANY CONTENT TO OTHERS, WITHOUT EXPRESS AUTHORIZATION IS PROHIBITED.				DIESE ZEICHNUNG IST EIGENTUM DER FIRMA DELPHI UND ERHÄLT DELPHI VERTRÄULICHE INFORMATIONEN. DIE REPRODUKTION, VERTEILUNG UND NUTZUNG DIESES DOKUMENTS ODER DEREN INGENIEUR- ODER CAD DATEN, SOWIE AUCH ALS KOMMUNIKATION VON BELIEBIGER INHALT ZU ANDEREN, IST OHNE BEZUGSSTÄTTIGUNG DURCH DIE DELPHI CORPORATION UNZULÄSSIG.	
TOLERANCES -- TOLERANZEN --	MATERIAL : MATERIAL : ...	SURFACE FINISH OBERFLÄCHE		DELPHI DELPHI PACKARD ELECTRICAL/ELECTRONIC ARCHITECTURE NÜRNBERG GERMANY		CAD SYSTEM pro / eng.		
COUNTERPART No. GEGENSTÜCK Nr.	COLOUR : FARBE : ...	ECO Loc. Code GN		DIMENSION IN MILLIMETERS BEMASSUNG IN MILLIMETERN		DWG SIZE FORMAT A2		
DO NOT SCALE DRAWING ZEICHNUNG NICHT VERMESSEN	TOOL NO. WERKZEUG Nr.	ISO PROJECTION 1:1		DRAWING NUMBER ZEICHN. NUMMER		SHEET BLATT 3 of 3 3		
DRAWN BY GEZ.	DATE DATUM	NAME NAME	TITLE BENENNUNG	9 084 10 00		SCALE M: 10:1		
CHECKED BY GEZ.	26.03.08	A. Bauer	CRIMP- SPEZ. FLKT. UND FLST. DCS2-1.5 WD CRIMP SPEC. FEMALE AND MALE DCS2-1.5 WP	FILE NAME DATEI NAME		90841000_L.C		
APPROVED BY GEZ.	26.03.08	J. Muehl.	ESR NO. ESR NUMMER	CAT. NO. KATALOG Nr.	90841000_L.C			

EUR C04 112 F29