

## 12mm Coin Cell Breakout Board

PRODUCT ID: 1868

IN STOCK

1

ADD TO CART

1-9

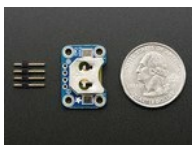
10-99

100+

ADD TO WISHLIST

[DESCRIPTION](#)

[TECHNICAL DETAILS](#)



## DESCRIPTION

Simple but effective - this breakout board has a CR1220 coin cell battery holder soldered on and 0.1" pitch breakout pins for easy connecting. Great for powering very low-current projects, or adding a battery backup circuit to a real-time-clock or similar.

Comes with one fully assembled and tested coin cell battery holder and a small stick of 0.1" header so you can solder it on and plug into a breadboard.



## TECHNICAL DETAILS

- [EagleCAD PCB files on GitHub](#)
- [Fritzing object in the Adafruit Fritzing library](#)

Dimensions:

- 16.5mm x 23mm x 2mm / 0.65" x 0.9" x 0.08"
- Mounting hole distance: 10mm x 16mm / 0.4" x 0.6"
- Weight: 1.5g

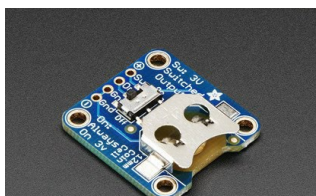


## LEARN

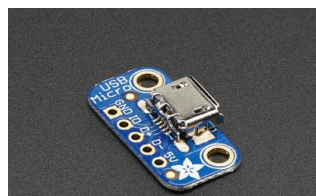


[Tiny TARDIS Pendant](#)  
Wear your Dr. Who

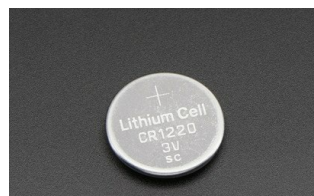
## MAY WE ALSO SUGGEST...



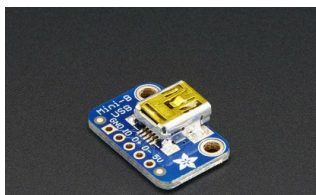
12mm Coin Cell Breakout w/



USB Micro-B Breakout



CR1220 12mm Diameter -



USB Mini-B Breakout Board



JST-PH 2-Pin SMT Right



Switched JST-PH 2-Pin SMT



20mm Coin Cell Breakout



20mm Coin Cell Breakout



Adafruit DS3231 Precision

[CONTACT](#)[SUPPORT](#)[DISTRIBUTORS](#)[EDUCATORS](#)[JOBS](#)[FAQ](#)[SHIPPING & RETURNS](#)[TERMS OF SERVICE](#)[PRIVACY & LEGAL](#)[ABOUT US](#)

ENGINEERED IN NYC Adafruit®

*"To be persuasive we must be believable; to be believable we must be credible; credible we must be truthful."* - [Edward R. Murrow](#)



4.9 ★★★★★  
Google  
Customer Reviews