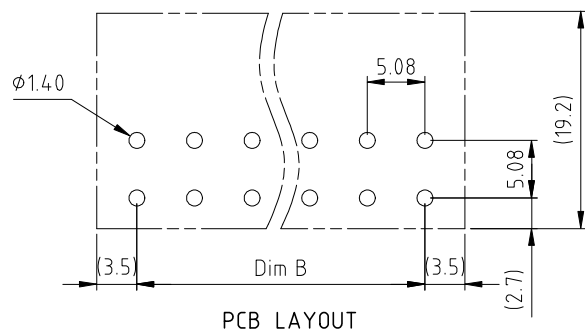
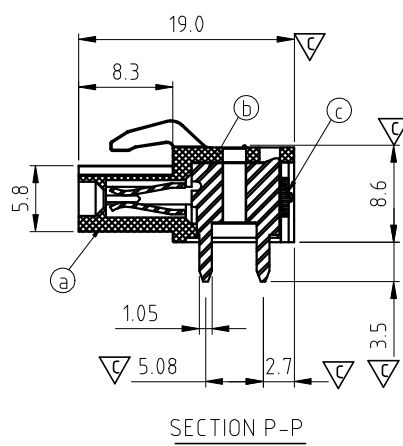
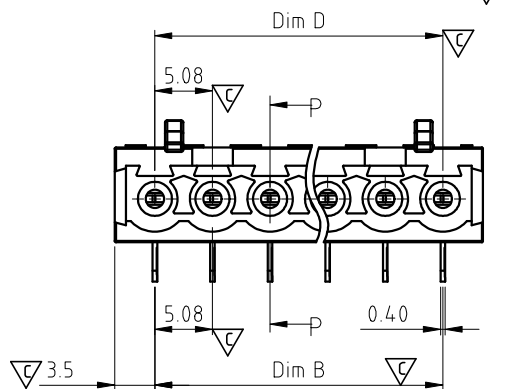
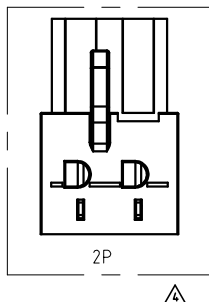
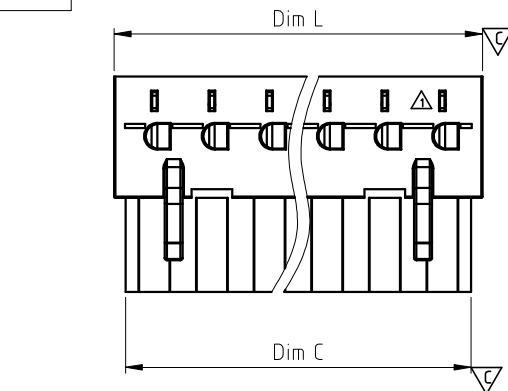


RoHS Compliant



PCB LAYOUT

DIM		TOL			
		2P-6P	7P-12P	13P-18P	19P-24P
Dim L	(N-1)×5.08+7.08	±0.15	±0.25	±0.30	±0.40
Dim B	(N-1)×5.08	±0.15	±0.25	±0.30	±0.40
Dim C	N×5.08	+0.0 -0.20		+0.0 -0.40	
Dim D	(N-1)×5.08	±0.15	±0.25	±0.30	±0.40

SIGN	DATE	DESCRIPTION	APPROVER
△	01/10/09	The design is changed	Jacke
△	04.20/09	The operating temperature is changed	Jacke
△	2010.01.12	Add cULus standard	Jacke
△	2010.03.31	Add the 2p mark	Jacke
△	2010.04.26	The current rating is changed from 10A to 20A	Jacke
△	2014.09.27	The current rating is changed from 20A to 10A	Evan
THIS IS CAD DRAWING, DO NOT REVISE MANUALLY!!!			

Materials

Item① Terminal body:Thermoplastic (UL94V-0)

Item② Female contact:PhBz(CuSn), Tin plated

Item③ Terminal cover:Thermoplastic (UL94V-0)

Electrical

● Voltage rating: 300VAC

△ ● Current rating: 10A

● Withstanding Voltage: 1.6kv

△ ● Operating temperature: -40°C to +115°C

● Soldering temperature: 260°C±5°C/5 Sec

● Safety Approval: cULus

● Critical dimension: △

V7 xx 5 1 x 1 xxxx G

No. OF POLES

02 2 ploe

03 3 ploe

24 24 ploe

Color

- 0 Black (RAL9005)
- 2 Red (RAL3001/D)
- 3 Orange(RAL2011/P)
- 4 Yellow(RAL1018/A)
- 5 Green(RAL6018/T)
- 6 Blue (RAL5015/A)
- 8 Grey(RAL7035/D)
- 9 White(RAL1102)
- C Green(RAL6018/U)

G RoHS compliant
(lead<4%)
In copper Alloy

0000: "@" Logo (Standard)


000A: "ANYTEK" Mark

Any special item by
customer request.
please contact sales
department.

Amphenol
ANYTEK

INSPECTION COPY

ALL RIGHTS RESERVED. REPRODUCTION OR ISSUE TO THIRD PARTIES IN ANY FORM WHATEVER IS NOT PERMITTED WITHOUT WRITTEN AUTHORITY FROM THE PROPRIETOR. PROPERTY OF ANYTEK TECHNOLOGY CO., LTD

TITLE		V7 5.08 Series Right-angle				
PART NO.	V7xx51x1xxxxG			DWG NO.	8V70302	
APPROVED	CHECKED	DESIGNED	DRAWN	CUST NO.	Tolerance	
		Rhine 2021.12.02	Rhine 2021.12.02			
		SHEET: 01/01	SCALE: NONE		X.X ±0.3	
						REV: G
					X° ±1°	