

40-pin 0.5mm pitch FPC Flex Cable with A-B Connections - 25cm long

Product ID: 4933

\$0.95

Out of stock

Please enter your details below and we will send you an email when this item is back in stock. You will only be emailed about this product!

Your Email

Notify Me

Buy on Digi-Key

[Why buy on Digi-Key?](#)

Add to Wishlist ▾

Description

Description

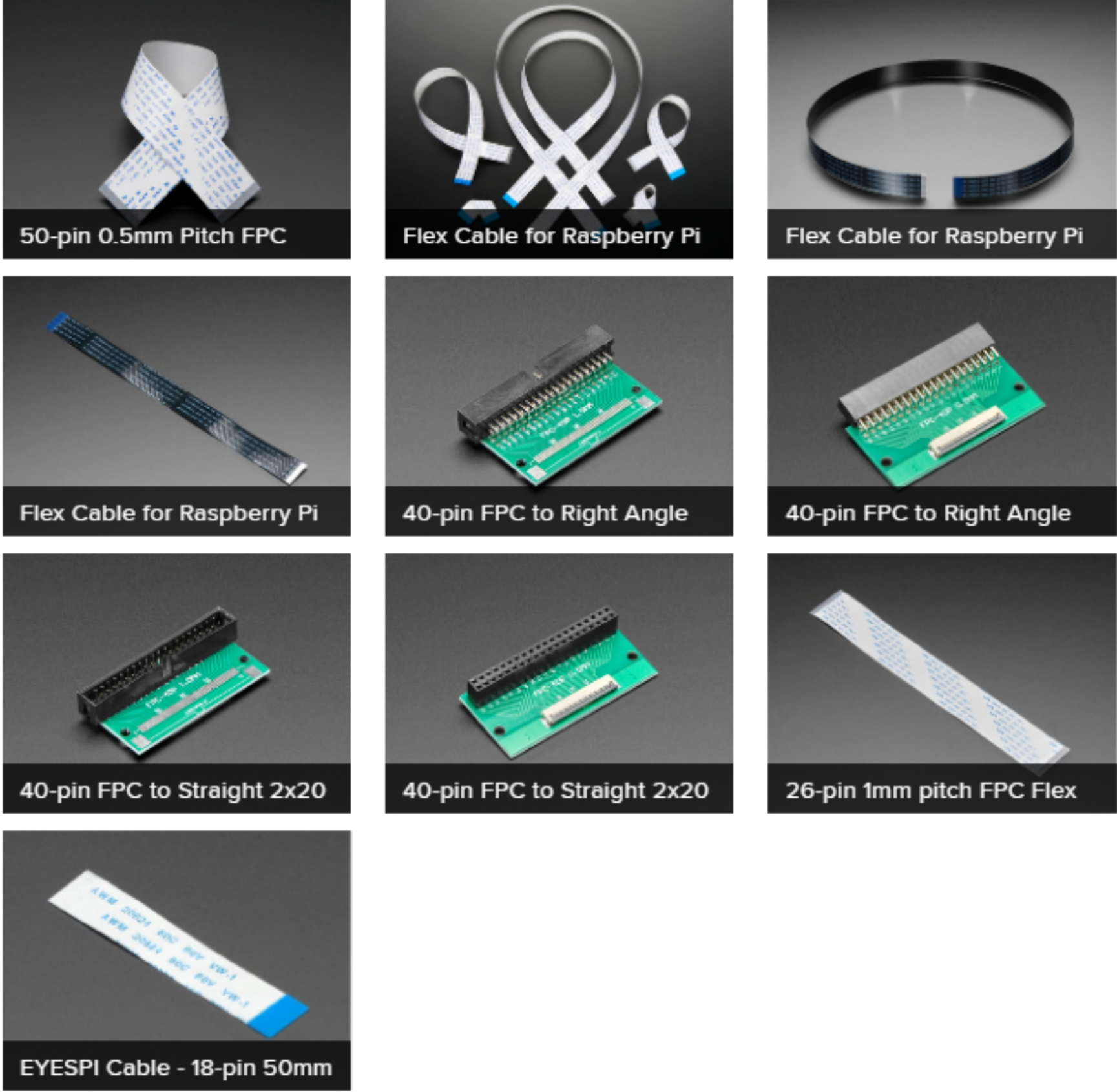
Use this 25 cm long cable with our [40-pin FPC to 2x20 IDC Plug and Socket adapter PCBs](#) to extend your Raspberry Pi's GPIO capabilities. Note you'll have to keep an eye on where Pin 1 is on the ribbon cable, on the adapter PCBs, and your HAT or Bonnet of choice.

Works great with any two of the following:

- [40-pin FPC to Straight 2x20 IDC Male Plug Header](#)
- [40-pin FPC to Right Angle 2x20 IDC Male Plug Header Adapter](#)
- [40-pin FPC to Right Angle 2x20 IDC Female Socket Header](#)
- [40-pin FPC to Straight 2x20 IDC Female Socket Header](#)

If you want to extend the FPC even further, [a 40-pin extender can be snapped on](#).

May We Also Suggest...



Distributors

