

TE Internal #: 2344656-2
Flexible PCB (FPC) Antenna, Dual Band, Wi-Fi, Internal/Embedded
Mount, Adhesive, MHF1 / UMCC / U.FL, Omnidirectional, Single
Port, Gain 0 < 3 dBi
[View on TE.com >](#)



Antennas



Wireless Application: **Bluetooth, Wi-Fi, Zigbee**
Mounting Location: **Internal/Embedded**
Mounting Type: **Adhesive**
Antenna Termination: **MHF, MHF1, U.FL, UMCC**
Antenna Type: **Flexible PCB (FPC)**

Features

Product Type Features

Antenna Termination	MHF, MHF1, U.FL, UMCC
---------------------	-----------------------

Configuration Features

Antenna Style	Thin PCB
Mounting Location	Internal/Embedded
Antenna Type	Flexible PCB (FPC)
Band Type	Dual Band
Port Configuration	Single Port

Electrical Characteristics

Antenna Operation	Passive
VSWR (Max)	<2:1
Impedance	50 Ω

Signal Characteristics

Gain (Max)	2 dBi
Frequency Band	2400 – 2500 MHz, 5150 – 5875 MHz



Nominal Frequency Range	2400 – 5950
Peak Gain	0 < 3 dBi

Body Features

Product Weight	1.2 g[.042 oz]
----------------	----------------

Mechanical Attachment

Polarization	Linear
Mounting Type	Adhesive

Dimensions

Cable Length	.1 m[.33 ft]
Product Diameter	1.13 mm[.044 in]
Cable Insulation Diameter (Max)	.7 mm[.028 in]
Product Width	9.5 mm[.374 in]
Product Length	30 mm[1.181 in]
Product Height	.19 mm[.007 in]

Operation/Application

Wireless Standard	802.11 a/b/g/n/ac/ad, Bluetooth, ZigBee & Wi-Fi
Directionality	Omnidirectional

Industry Standards

Wireless Application	Bluetooth, Wi-Fi, Zigbee
Primary Application	Wi-Fi

Product Availability

Applicable Region	Global
-------------------	--------

Packaging Features

Packaging Method	Bag & Box
------------------	-----------

Other

Precision Level	Standard
-----------------	----------

Product Compliance

For compliance documentation, visit the product page on [TE.com](#)>

EU RoHS Directive 2011/65/EU	Compliant
EU ELV Directive 2000/53/EC	Compliant



China RoHS 2 Directive MIIT Order No 32, 2016	No Restricted Materials Above Threshold
EU REACH Regulation (EC) No. 1907/2006	Current ECHA Candidate List: JAN 2023 (233) Candidate List Declared Against: JAN 2023 (233) Does not contain REACH SVHC
Halogen Content	BFR/CFR/PVC Free, but Br/Cl >900 ppm in other sources.
Solder Process Capability	Not applicable for solder process capability

Product Compliance Disclaimer

This information is provided based on reasonable inquiry of our suppliers and represents our current actual knowledge based on the information they provided. This information is subject to change. The part numbers that TE has identified as EU RoHS compliant have a maximum concentration of 0.1% by weight in homogenous materials for lead, hexavalent chromium, mercury, PBB, PBDE, DBP, BBP, DEHP, DIBP, and 0.01% for cadmium, or qualify for an exemption to these limits as defined in the Annexes of Directive 2011/65/EU (RoHS2). Finished electrical and electronic equipment products will be CE marked as required by Directive 2011/65/EU. Components may not be CE marked. Additionally, the part numbers that TE has identified as EU ELV compliant have a maximum concentration of 0.1% by weight in homogenous materials for lead, hexavalent chromium, and mercury, and 0.01% for cadmium, or qualify for an exemption to these limits as defined in the Annexes of Directive 2000/53/EC (ELV). Regarding the REACH Regulation, the information TE provides on SVHC in articles for this part number is based on the latest European Chemicals Agency (ECHA) 'Guidance on requirements for substances in articles' posted at this URL: <https://echa.europa.eu/guidance-documents/guidance-on-reach>

Compatible Parts

TE Part # 2337019-1
UMCC Micro-Coax receptacle, Gen 1

Customers Also Bought

TE Part #1-1735446-1
2MM PITCH HPI POST HEADER, VERTICAL, 11P

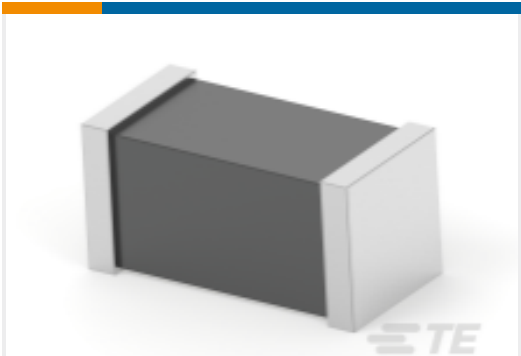
TE Part #2007180-1
SFP+ 1X2 CAGE ASSM/LIGHTPIPE, EMI GASKET

TE Part #1909763-1
UMCC MICRO-COAX RECPT GEN 1 HIGHER LEVEL

TE Part #9-1879140-6
RN 0603 182K 0.1% 10PPM 5K RL



TE Part #1513472-1
UAM Assembly



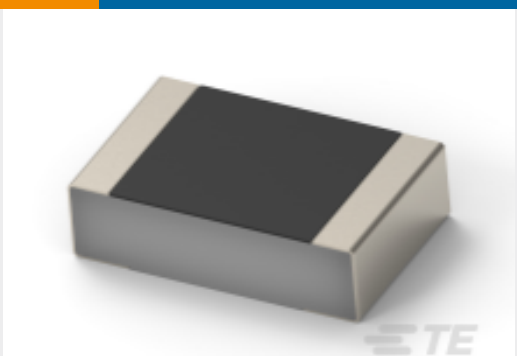
TE Part #1-2176492-6
BMC 0402 430R 25% A Gen C



TE Part #100616-2
8/8 MOD.JACK ASSY TE SHIELDED



TE Part #3-103336-6
04 MODII HDR SRST UNSHRD A/PIN



TE Part #1-2176451-8
CPF 0201 75R 0.1% 25ppm 1K RL

Documents

Product Drawings

WLAN DUAL BAND ANTENNA FPC V 100mm

English

CAD Files

3D PDF

3D

Customer View Model

ENG_CVM_CVM_2344656-2_B.2d_dxf.zip

English

Customer View Model

ENG_CVM_CVM_2344656-2_B.3d_igs.zip

English

Customer View Model

ENG_CVM_CVM_2344656-2_B.3d_stp.zip

English

By downloading the CAD file I accept and agree to the [Terms and Conditions](#) of use.

Datasheets & Catalog Pages

Datasheet 2344656

English

Product Specifications

Product Specification

English