

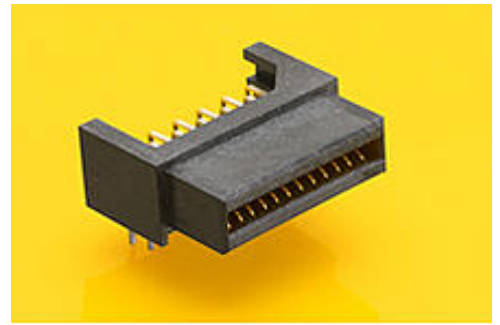
**Part Number :** [459840413](#)

**Product Description :** EXTreme LPHPower Receptacle Header, Right-Angle, 12 Signal Contacts, Select Gold (Au) Plating, for 1.57mm Thick PC Board, with Guide Posts and Press-fit Plastic Pegs

**Series Number :** 45984

**Status :** Active

**Product Category :** Board-to-Board Connectors



---

## Documents and Resources

### Drawings

[459840413 sd.pdf](#)

### 3D Models and Design Files

[STEP AP242](#)

[SOLIDWORKS](#)

[Creo](#)

[Symbol and Footprint \(Multi-Format\)](#)

[SYM-45984-0411-001.zip](#)


### Specifications

[PS-45984-001-001.pdf](#)

---

## Product Environment Compliance

### Compliance

GADSL/IMDS	Not Relevant
China RoHS	 per SJ/T 11365-2006
EU ELV	Not Relevant
Low-Halogen Status	Low-Halogen per IEC 61249-2-21
REACH SVHC	Not Contained per D(2025)7771-DC (04 Feb 2026)
EU RoHS	Compliant per EU 2015/863

[Compliance Statements](#)

- EU RoHS
- REACH SVHC
- Low-Halogen

#### Industry Documents

- IPC 1752A Class C
- IPC 1752A Class D
- Molex Product Compliance Declaration
- IEC-62474
- chemSHERPA (xml)

#### Substances of Interest

- PFAS

#### EU RoHS Certificate of Compliance

#### Additional Product Compliance Information

## Part Details

### General

Status	Active
Category	Board-to-Board Connectors
Series	45984
Description	EXTreme LPHPower Receptacle Header, Right-Angle, 12 Signal Contacts, Select Gold (Au) Plating, for 1.57mm Thick PC Board, with Guide Posts and Press-fit Plastic Pegs
Application	Board-to-Board, Signal
Component Type	Receptacle
Product Name	EXTreme LPHPower
UPC	884982067554

### Agency

CSA	LR19980
UL	E29179

### Electrical

Current - Maximum per Contact	1.0A
Grounding to PCB	No
Voltage - Maximum	30V DC (Signal)

## Physical

Circuits (Loaded)	12
Circuits (maximum)	12
Color - Resin	Black
Durability (mating cycles max)	250
Flammability	94V-0
Glow-Wire Capable	No
Guide to Mating Part	Yes
Keying to Mating Part	No
Lock to Mating Part	No
Material - Metal	High Performance Alloy (HPA)
Material - Plating Mating	Gold
Material - Plating Termination	Tin
Material - Resin	High Temperature Thermoplastic
Net Weight	1.876/g
Number of Rows	2
Orientation	Right Angle
Packaging Type	Tray
PCB Locator	No
PCB Retention	No
PCB Thickness - Recommended	1.57mm
PC Tail Length	2.90mm
Pitch - Mating Interface	1.27mm
Pitch - Termination Interface	1.27mm
Plating min - Mating	0.762µm
Plating min - Termination	3.810µm
Polarized to Mating Part	Yes
Polarized to PCB	Yes
(p)ower-(s)ignal Configuration	12s - 0p
Stackable	No
Temperature Range - Operating	-40° to +105°C
Termination Interface Style	Through Hole

## Solder Process Data

Max-Duration	20
--------------	----

Lead-Free Process Capability	WAVE
Max-Cycle	3
Max-Temp	260

---

## Mates With / Use With

### Mates with Part(s)

Description	Part Number
EXTreme LPHPower Right-Angle Plugs	<u>45985</u>
Mates With	1.57mm Card Edge

---

This document was generated on Apr 26, 2026