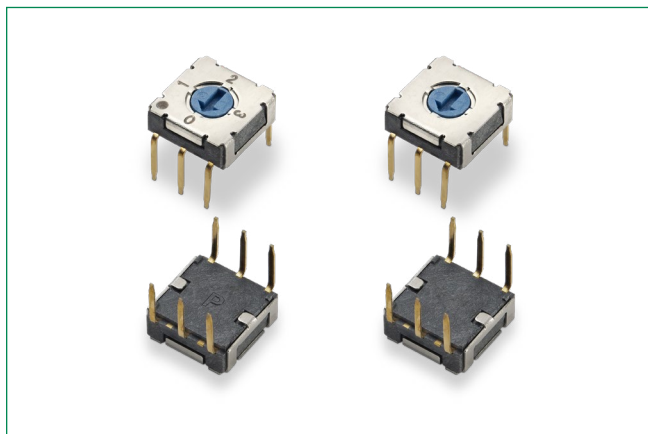


# RTF Series

## 7.2 mm x 7.2 mm Low Profile Rotary DIP Switches



### Description

The RTF series offers the most compact 7.2 mm x 7.2 mm low profile rotary DIP switches. It has a new design with different actuators and different terminations. Rated IP67.

### Features & Benefits

- New generation
- Most compact rotary DIP switch
- Through-hole, Crimped, J-Bend, Angled and Surface Mount Models
- New designs with different actuators
- Ingress Protection: IP67
- RoHS compliant
- Reflow compatible

### Applications

- Industrial and control automation
- Automotive
- Computer and peripherals
- Instrumentation
- Security devices

### Specifications

<b>Contact Rating</b>	100mA, DC 5V (switching) 100mA, DC 50V (non-switching)
<b>Packaging</b>	Switches are supplied in rigid dispensing tubes in full-tube quantities only, this may affect order quantities. Number of switches per tube varies with model. Tape and reel packing is available with "S", "A" and "J" type terminations.

### Mechanical Characteristics

<b>Mechanical and Electrical Life</b>	10,000 cycles
<b>Initial Contact Resistance</b>	100 milliohms max.
<b>Insulation Resistance</b>	100 megohms min.

### Environmental Characteristics

<b>Operating Temperature</b>	-40°C to 85°C
<b>Storage Temperature</b>	
<b>Operating Force</b>	200 gf max.

### Process

<b>Solderability</b>	Dip and look solderability testing per C&K spec #448
<b>Solder Conditions</b>	Iron soldering, C/K/S/A/J termination: 3s/350°C Wave soldering, C/K/A termination: 5s/280°C Reflow soldering, S/J termination: 10s/260°C

### Materials

<b>Cover</b>	Steel, Stainless Steel
<b>Base</b>	LCP
<b>Actuator</b>	
<b>Contacts</b>	Phosphor bronze, gold plated
<b>Spring &amp; Guide Plate</b>	Stainless steel
<b>Terminals</b>	Brass, gold plated
<b>O-ring</b>	Silicon

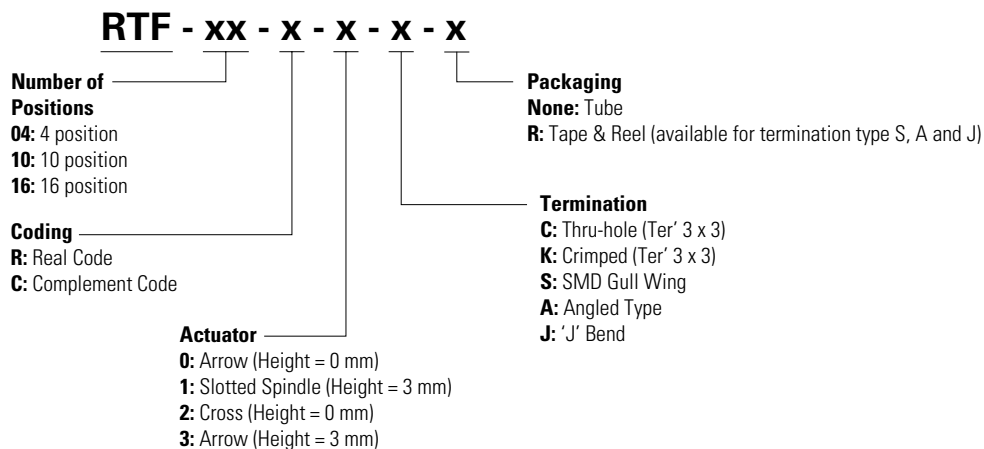
# RTF Series

## 7.2 mm x 7.2 mm Low Profile Rotary DIP Switches



### Ordering Number

The Build-A Switch concept allows you to mix and match options to create the switch you need. Below is a complete listing of options shown in catalog. To order, simply select desired option from each category and place in the appropriate box.



### Coding R Real Code

04 Position

		Real Code				
		C	1	2	4	8
04 Position	0	•	•	•	•	•
	1	•	•	•	•	•
	2	•	•	•	•	•
	3	•	•	•	•	•

10 Position

		Real Code				
		C	1	2	4	8
10 Position	0	•	•	•	•	•
	1	•	•	•	•	•
	2	•	•	•	•	•
	3	•	•	•	•	•
	4	•	•	•	•	•
	5	•	•	•	•	•
	6	•	•	•	•	•
	7	•	•	•	•	•
	8	•	•	•	•	•
	9	•	•	•	•	•

16 Position

		Real Code				
		C	1	2	4	8
16 Position	0	•	•	•	•	•
	1	•	•	•	•	•
	2	•	•	•	•	•
	3	•	•	•	•	•
	4	•	•	•	•	•
	5	•	•	•	•	•
	6	•	•	•	•	•
	7	•	•	•	•	•
	8	•	•	•	•	•
	9	•	•	•	•	•
	A	•	•	•	•	•
	B	•	•	•	•	•
	C	•	•	•	•	•
	D	•	•	•	•	•
	E	•	•	•	•	•
	F	•	•	•	•	•

### C Complement Code

04 Position

		Complement Code				
		C	1	2	4	8
04 Position	0	•	•	•	•	•
	1	•	•	•	•	•
	2	•	•	•	•	•
	3	•	•	•	•	•

10 Position

		Complement Code				
		C	1	2	4	8
10 Position	0	•	•	•	•	•
	1	•	•	•	•	•
	2	•	•	•	•	•
	3	•	•	•	•	•
	4	•	•	•	•	•
	5	•	•	•	•	•
	6	•	•	•	•	•
	7	•	•	•	•	•
	8	•	•	•	•	•
	9	•	•	•	•	•

16 Position

		Complement Code				
		C	1	2	4	8
16 Position	0	•	•	•	•	•
	1	•	•	•	•	•
	2	•	•	•	•	•
	3	•	•	•	•	•
	4	•	•	•	•	•
	5	•	•	•	•	•
	6	•	•	•	•	•
	7	•	•	•	•	•
	8	•	•	•	•	•
	9	•	•	•	•	•
	A	•	•	•	•	•
	B	•	•	•	•	•
	C	•	•	•	•	•
	D	•	•	•	•	•
	E	•	•	•	•	•
	F	•	•	•	•	•

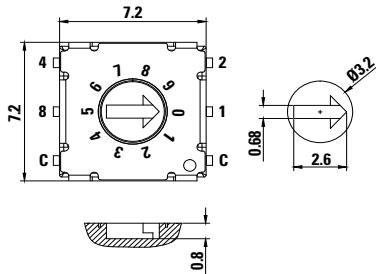
# RTF Series

## 7.2 mm x 7.2 mm Low Profile Rotary DIP Switches

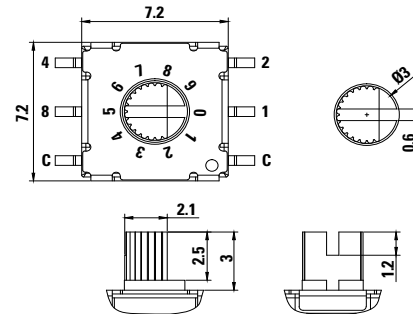


### Actuator

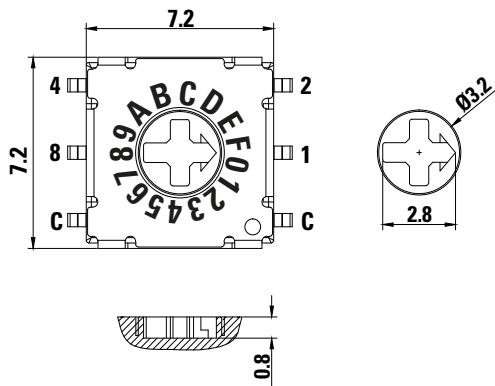
0 Arrow (Height = 0 mm)



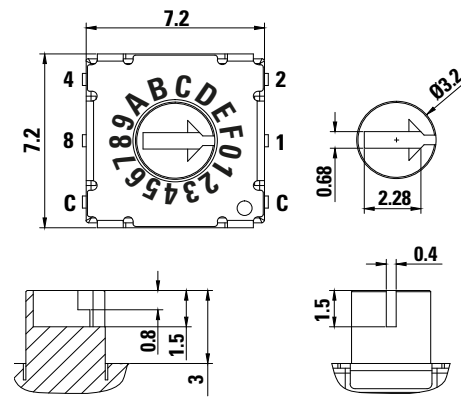
1 Slotted Spindle (Height = 3 mm)



2 Cross (Height = 0 mm)

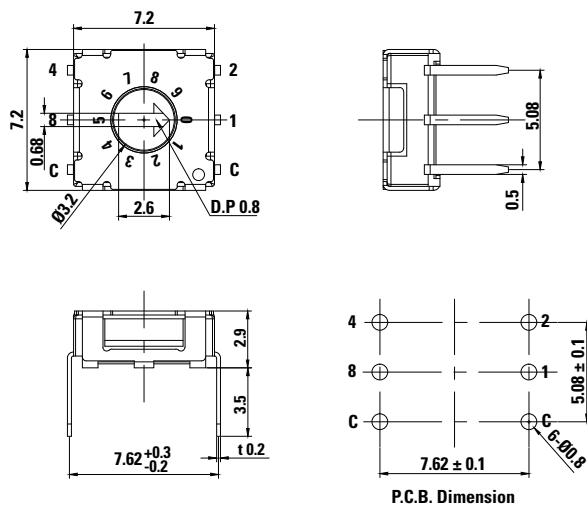


3 Arrow (Height = 3 mm)

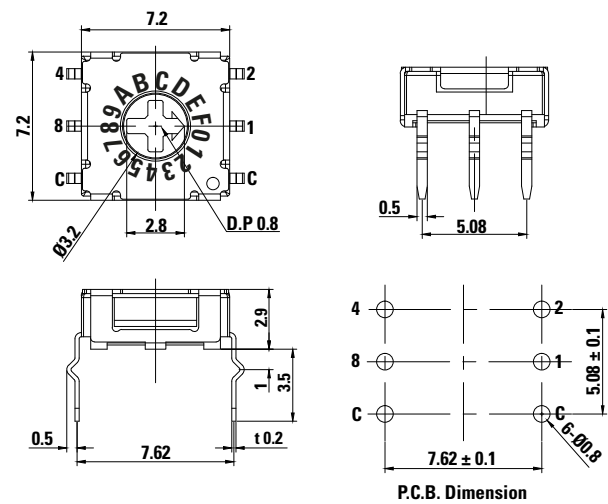


### Terminations

C Thru-hole



K Crimped (Ter' 3 x 3)

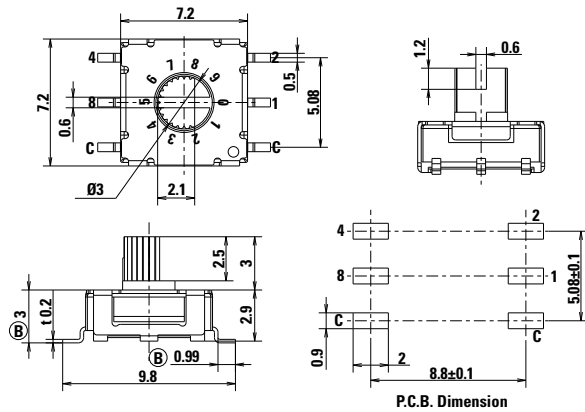


# RTF Series

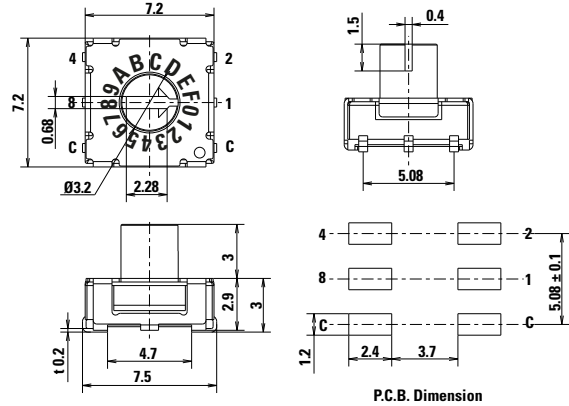
## 7.2 mm x 7.2 mm Low Profile Rotary DIP Switches



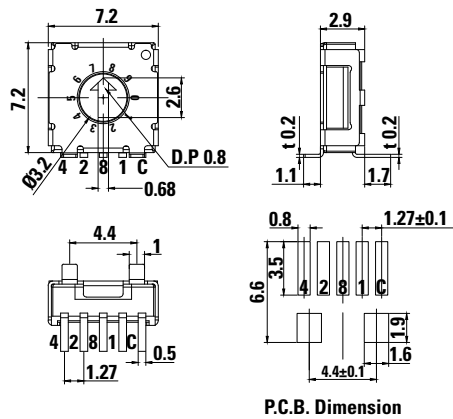
### S SMD Gull Wing



### J Bend SMD

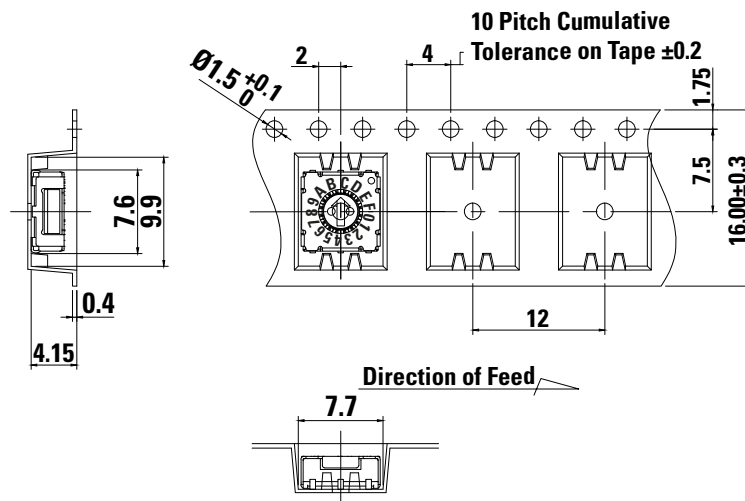


### A Angled Type



### Tape and Reel

The tape and reel is applicable for Actuator 0 or 2 with Termination S or J, 1300 pcs/reel

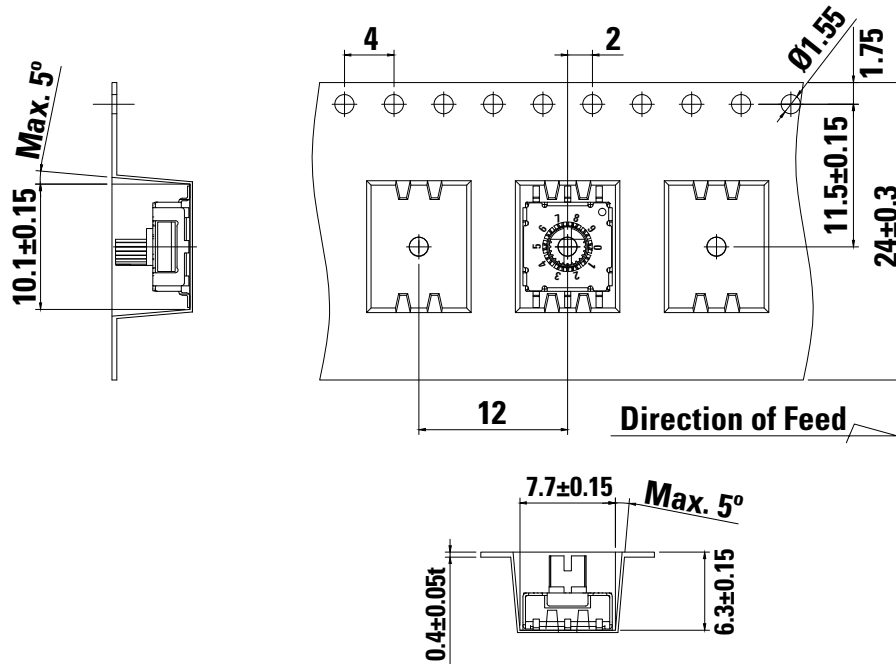


# RTF Series

## 7.2 mm x 7.2 mm Low Profile Rotary DIP Switches



The tape and reel is applicable for Actuator 1 or 3 with Termination S or J, 800 pcs/reel



**Disclaimer Notice** - Information furnished is believed to be accurate and reliable. However, users should independently evaluate the suitability of and test each product selected for their own applications. Littelfuse products are not designed for, and may not be used in, all applications. Read complete Disclaimer Notice at <http://www.littelfuse.com/disclaimer-electronics>.