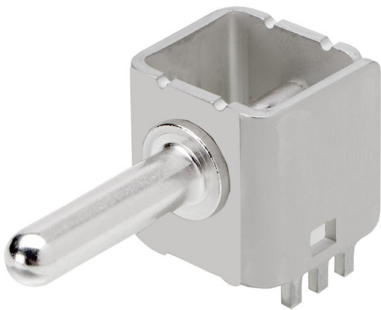




Part Number : [2204091012](#)
Product Description : Centrality 6.00mm
Right-Angle Pin, 24.65mm Engagement
Length, Tray
Series Number : 220409
Status : Active
Product Category : PCB Headers and
Receptacles
Engineering Number : 2204090-1012



Documents & Resources

Drawings

[2204091012_sd.pdf](#)
[2204161011-PK-000.pdf](#)

3D Models and Design Files

[2204091012_stp.zip](#)

Specifications

[2204090000-AS-000.pdf](#)
[2204090000-PS-000.pdf](#)

Product Environment Compliance

Compliance

GADSL/IMDS	Not Reviewed
China RoHS	Not Reviewed
EU ELV	Not Reviewed
Low-Halogen Status	Not Reviewed
REACH SVHC	Not Reviewed
EU RoHS	Not Reviewed

Multiple Part Product Compliance Statements

- Eu RoHS
- REACH SVHC
- Low-Halogen

Multiple Part Industry Compliance Documents

- IPC 1752A Class C
- IPC 1752A Class D
- Molex Product Compliance Declaration
- IEC-62474
- chemSHERPA (xml)

EU RoHS Certificate of Compliance

Part Details

General

Status	Active
Category	PCB Headers and Receptacles
Series	220409
Description	Sentrality 6.00mm Right-Angle Pin, 24.65mm Engagement Length, Tray
Application	Board-to-Board, Busbar-to-Board, Power
Comments	Current and voltage performances are dependent upon application variables.
Component Type	PCB Header
Product Name	Sentrality
UPC	196823277719

Agency

UL	E29179
----	--------

Electrical

Current - Maximum per Contact	140.0A
Voltage - Maximum	1000V

Physical

Breakaway	No
Circuits (Loaded)	1
Circuits (maximum)	1
Diameter	6.00mm
Durability (mating cycles max)	200

Glow-Wire Capable	No
Guide to Mating Part	No
Height Above Board	20.50mm
Material - Metal	Copper Alloy
Material - Plating Mating	Silver
Material - Plating Termination	Silver
Net Weight	29.900/g
Number of Rows	1
Orientation	Right Angle
Packaging Type	Tray
PCB Retention	None
Pitch - Mating Interface	N/A
Polarized to Mating Part	No
Polarized to PCB	Yes
Temperature Range - Operating	-40° to +125°C
Termination Interface Style	Pin-in-Paste SMT

Mates With / Use With

Mates with Part(s)

Description	Part Number
Sentrality Right-Angle Socket Assemblies	<u>220413</u>

This document was generated on Feb 01, 2025