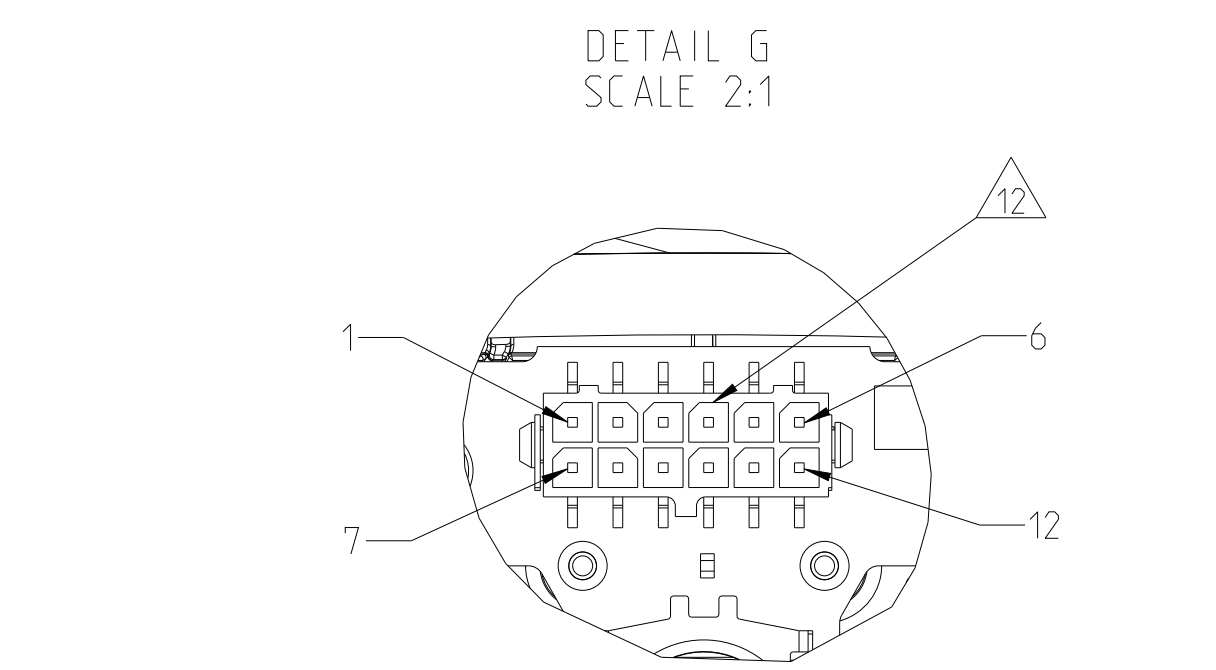
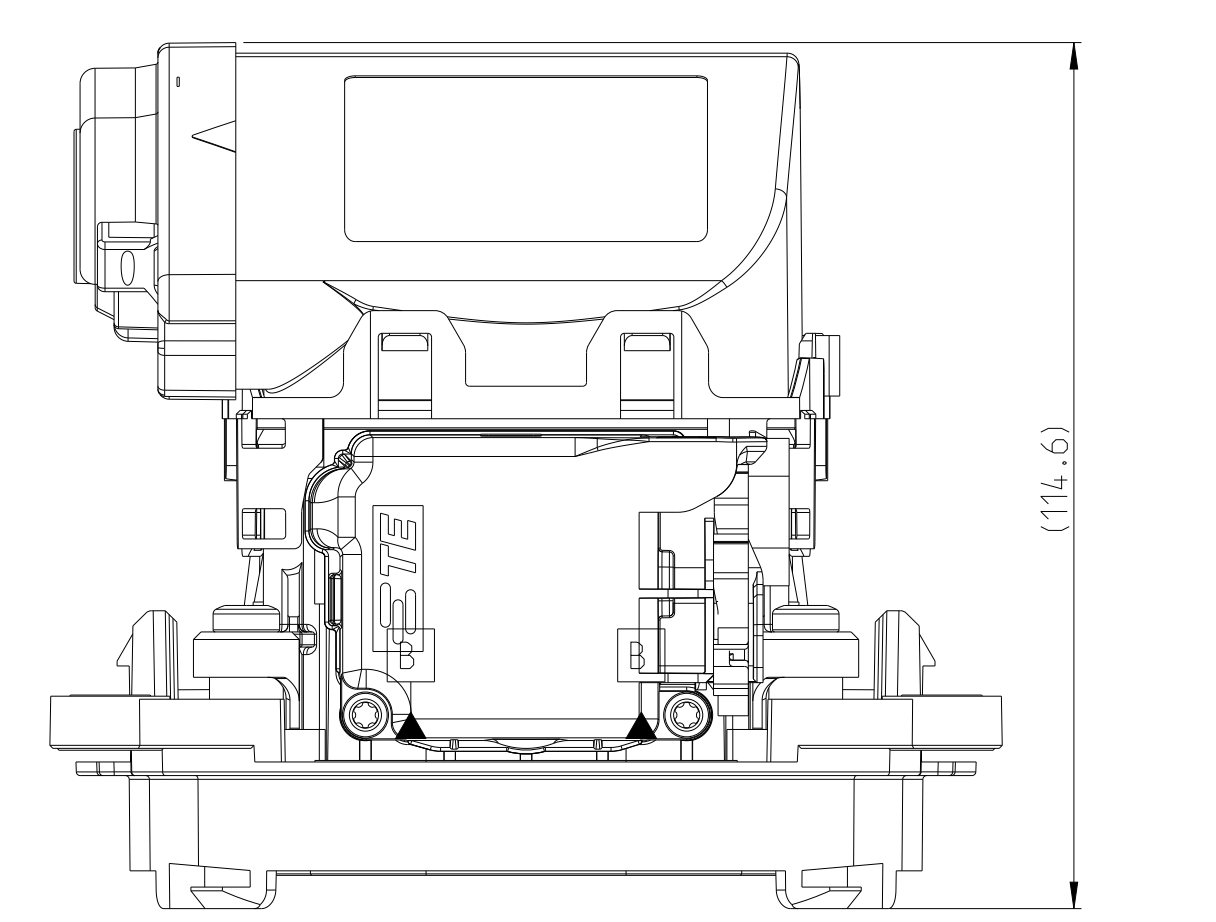
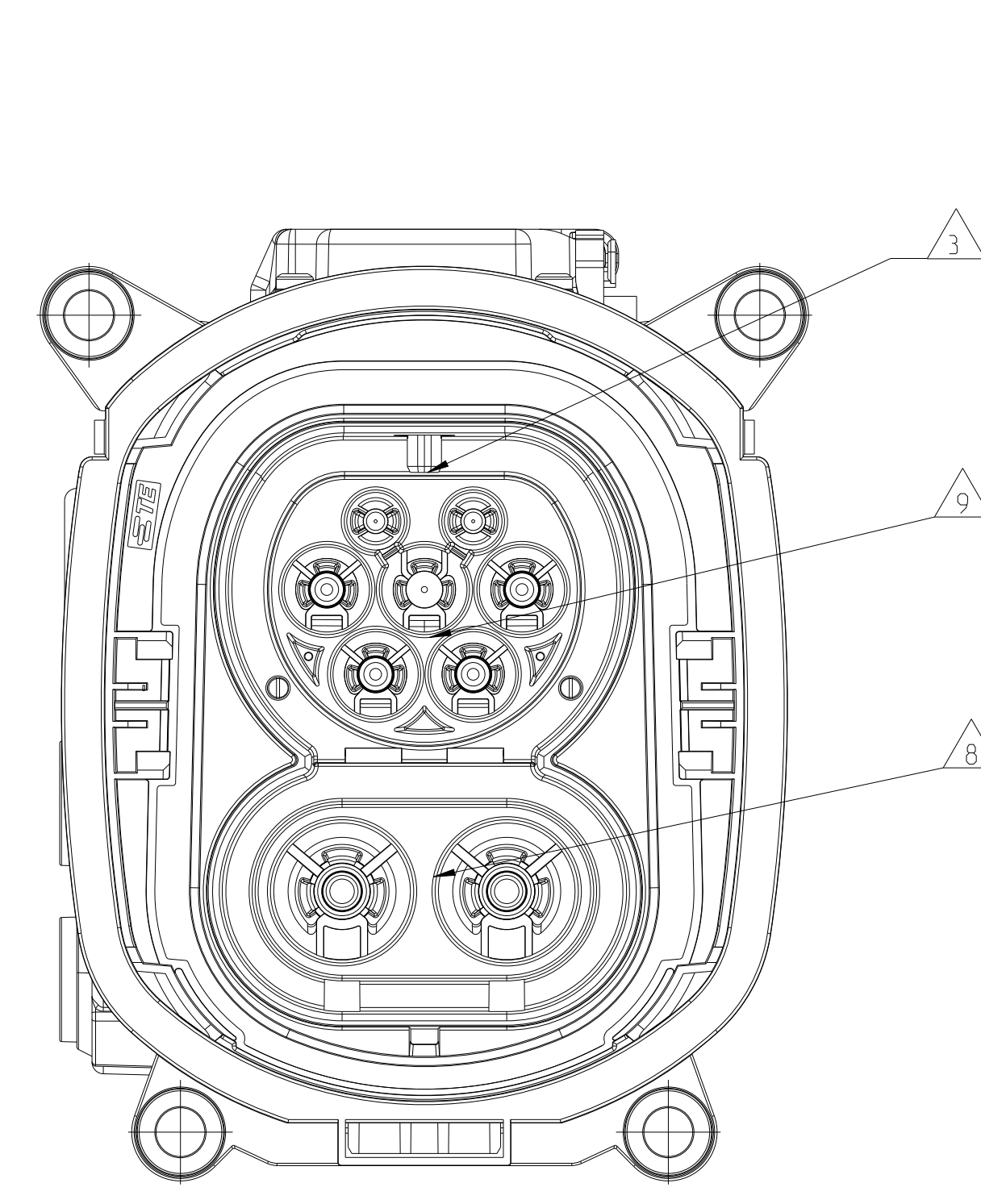
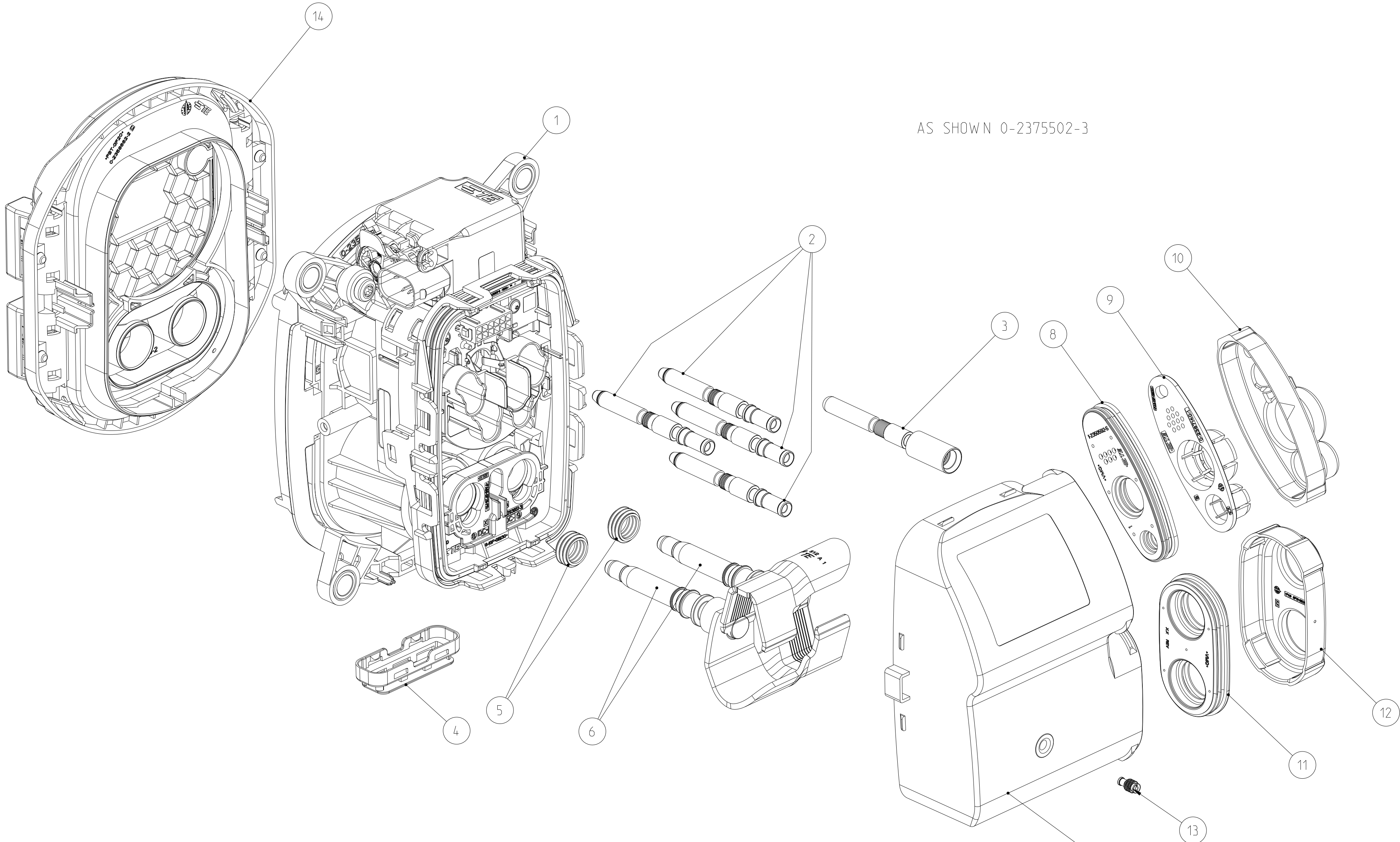
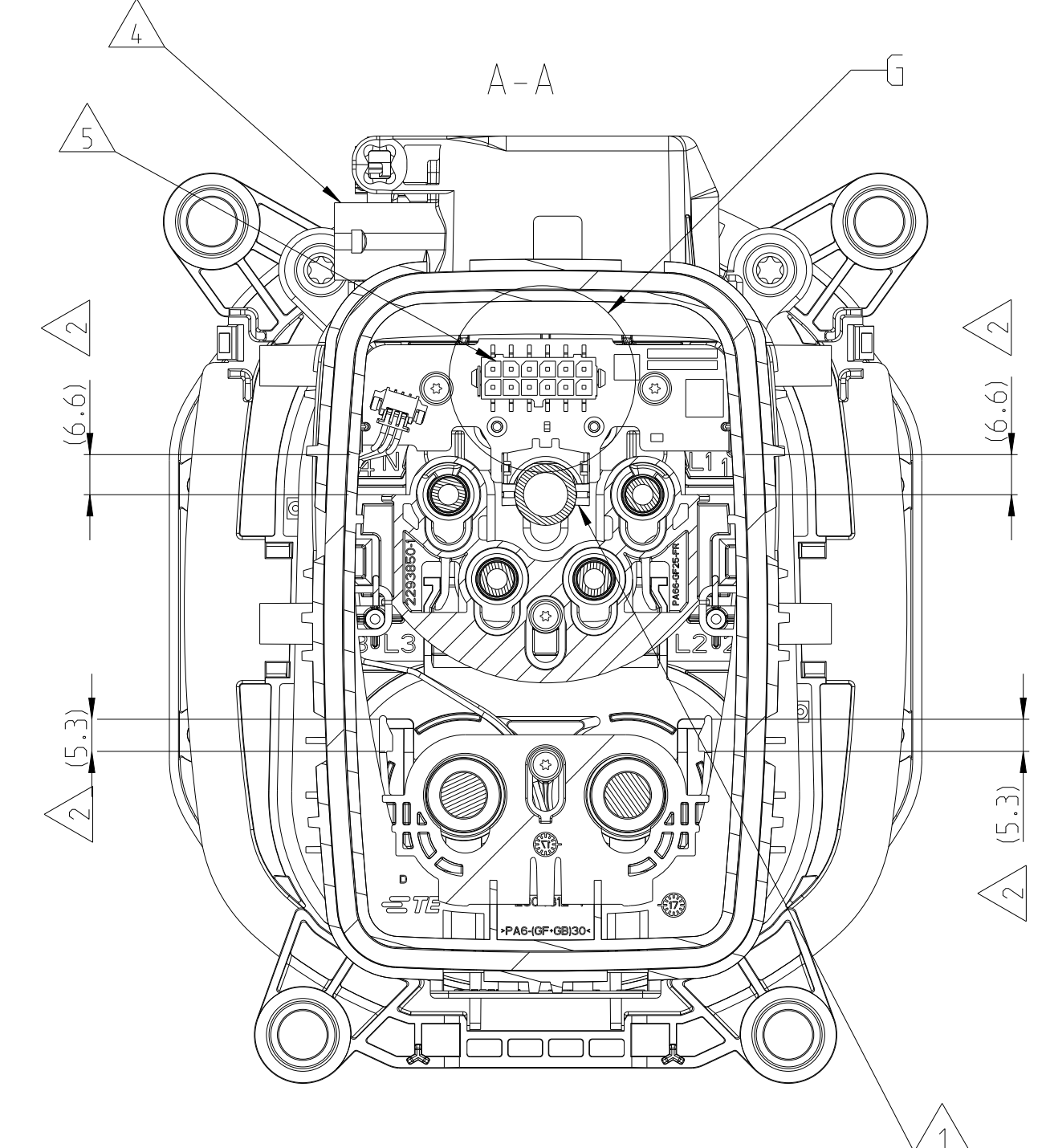
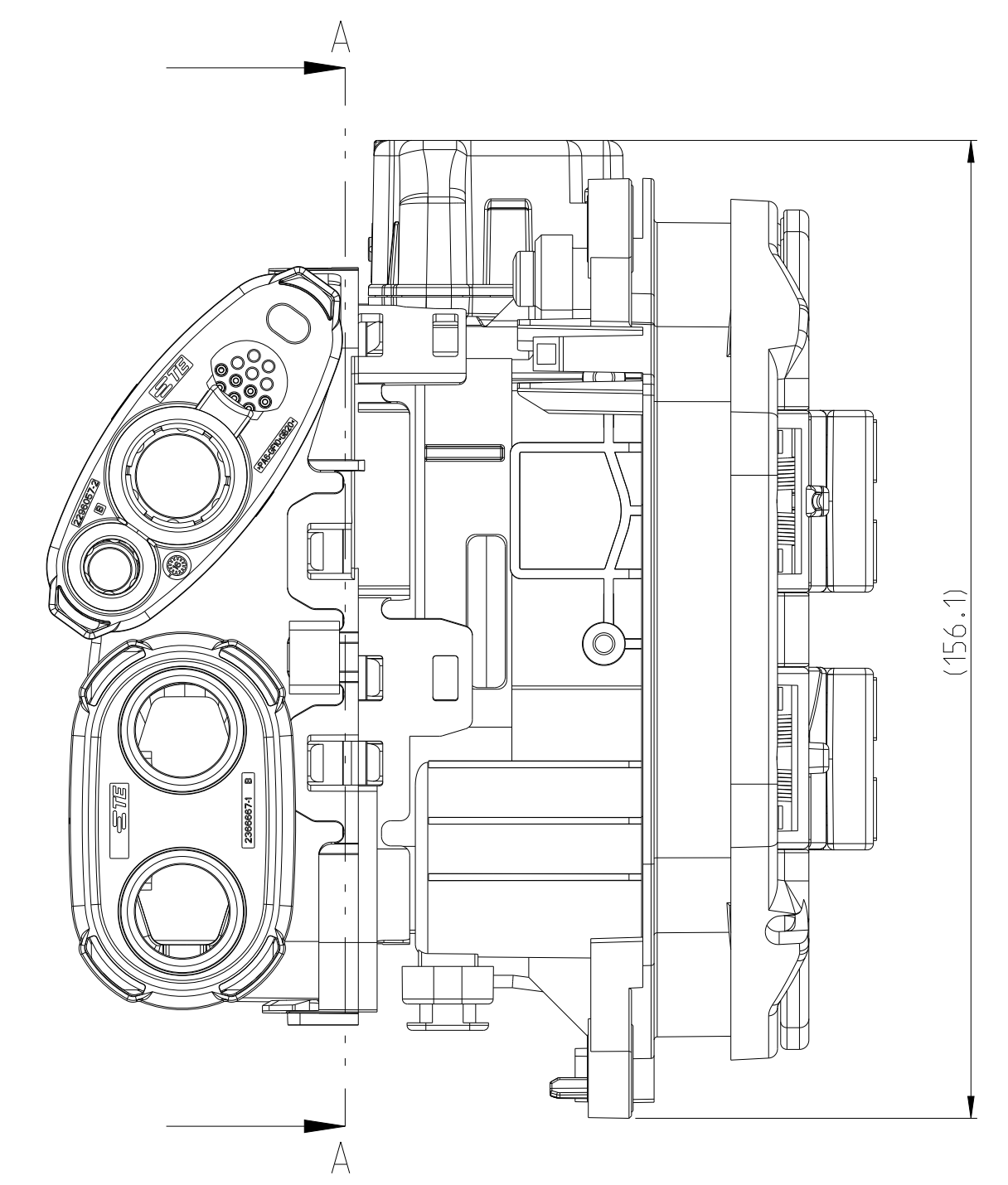
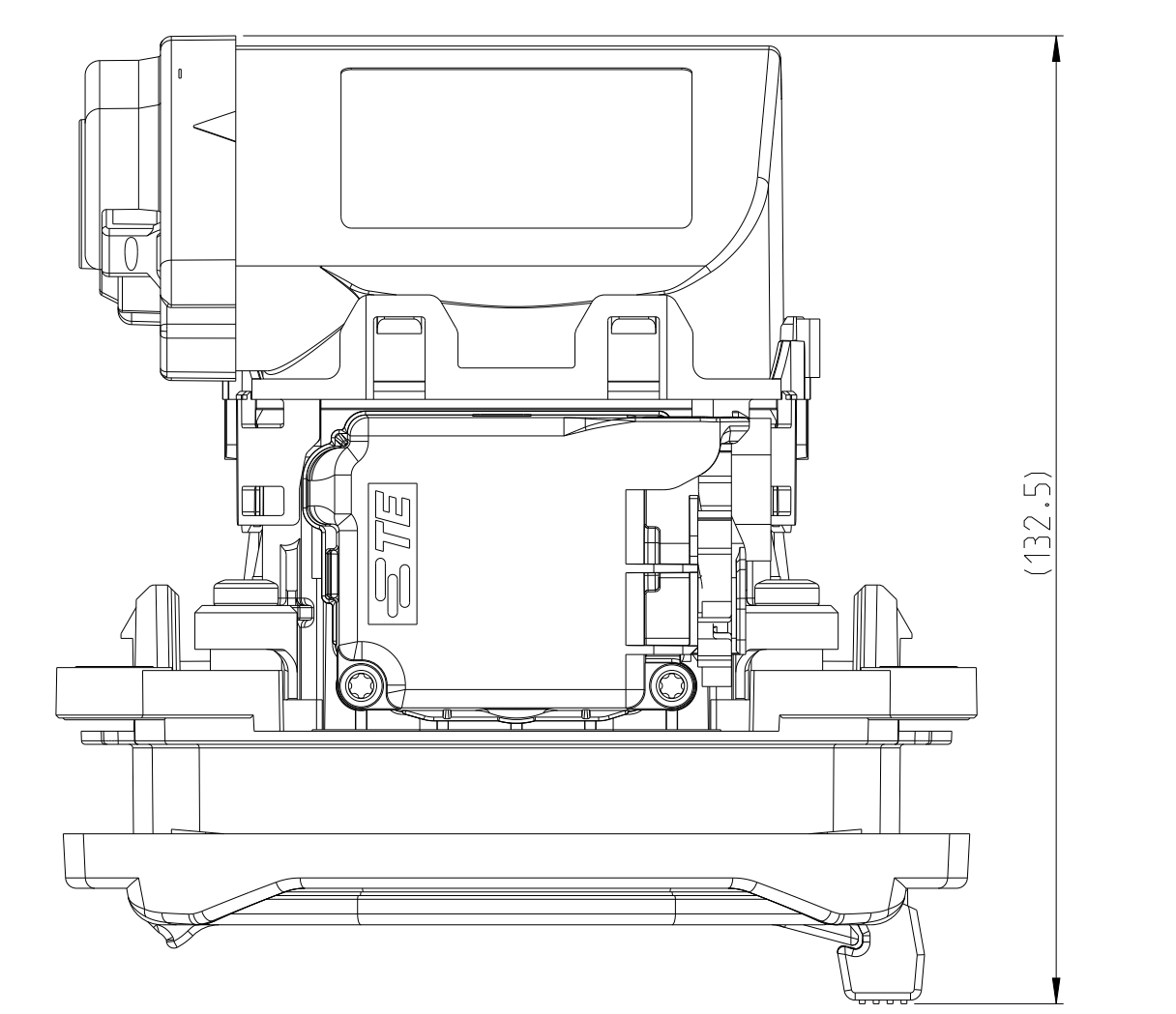
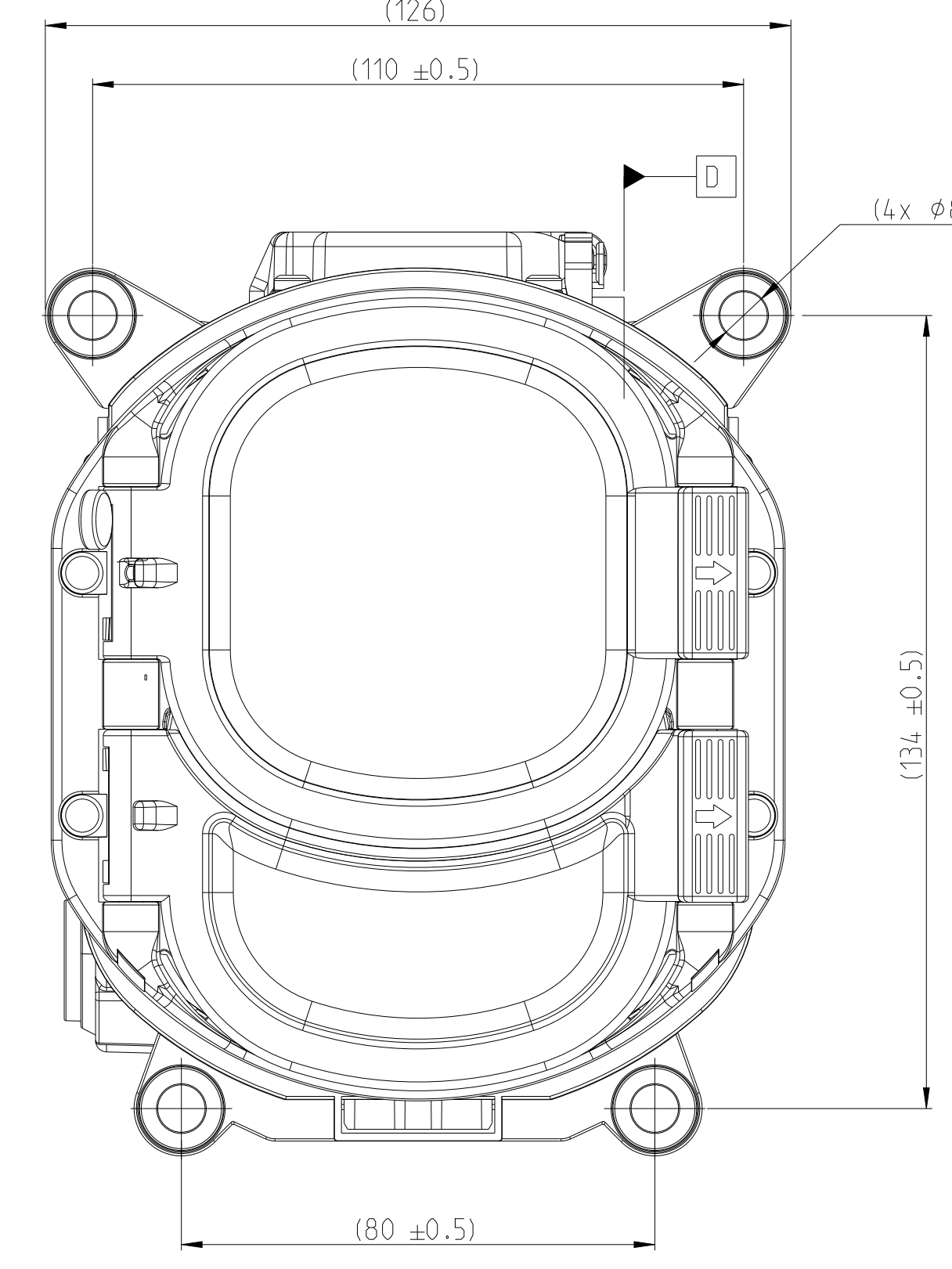


REVISIONS		DATE	BY	APPD
1	New Drawing	14AUG2020	US	BK
A1	ECR-21-115473	28SEP2021	US	BK
B	PCN-24-196382	09JAN2024	AJ	KBP

VARIANTS WITHOUT FLAP

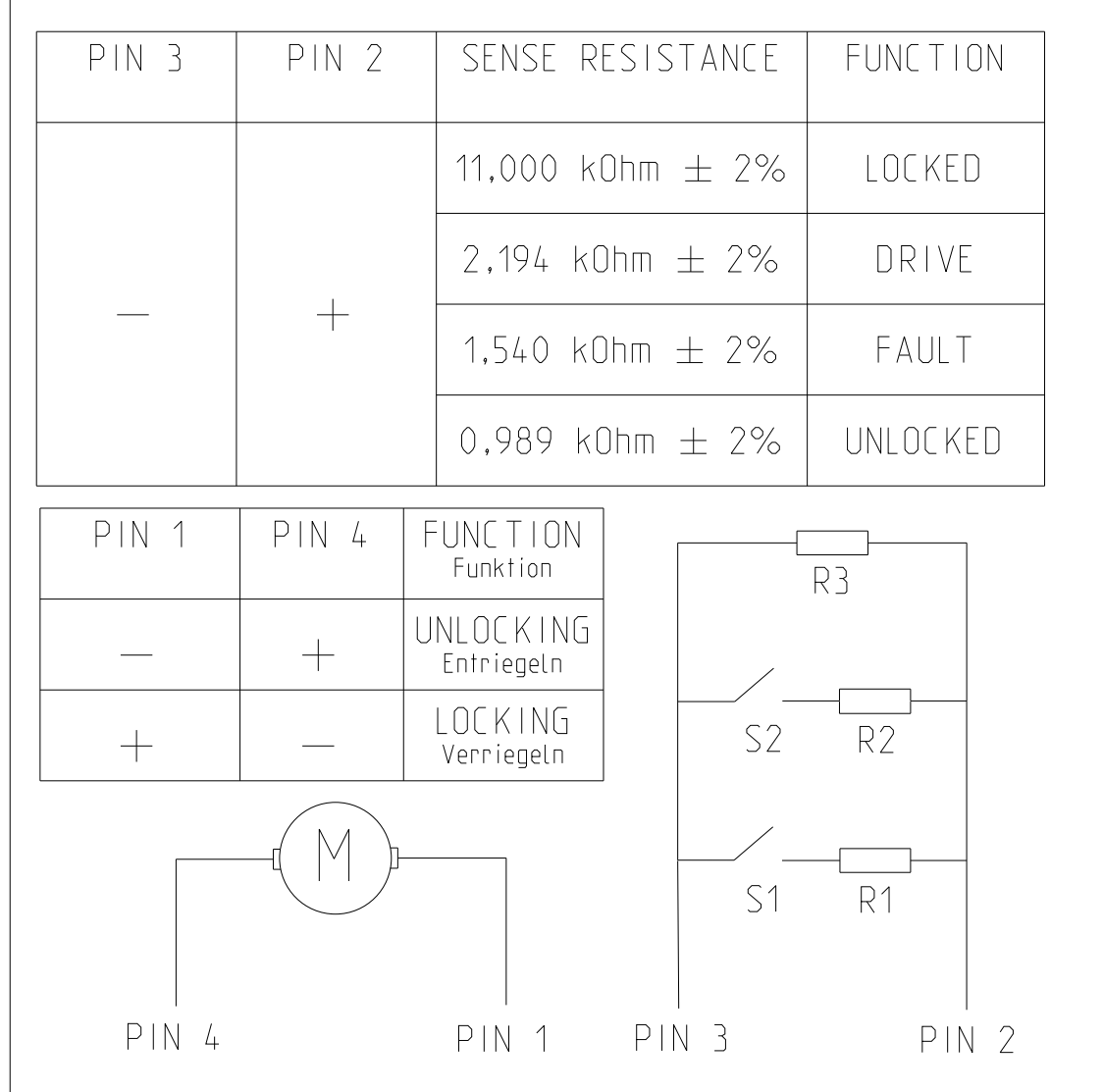


VARIANTS WITH FLAP (126)



- NOTES
- PACKED INTERLAYERED IN PLASTIC BAG IN CORRUGATED SHIPPING BOX
  - DELIVERY CONDITION: SEC. LOCKS IN PRELOCK POSITION
  - DELIVERY CONDITION ACTUATOR: ACTUATOR IN BASE POSITION
  - ROOM FOR CONNECTOR PN 1-967640-1 MATING WITH TE SPEC. 114-18063-124.
  - MAKE SURE THAT NO MECHANICAL FORCES ARE APPLIED ON THE HEADER OF PCB A
  - PE CONTACT CLAMP MAY BE DISCOLORED (BLACK/BROWN). TYPICAL FOR AG PLATING AND HAS NO IMPACT ON FUNCTION
  - APPLICABLE SCREWS FOR MOUNTING, HEAD DIAMETER MIN. 10.5mm, TORQUE 6Nm ± 0.9Nm FOR M6 SCREWS
  - CHARGE INLET SIMILAR TO IEC62196-3.CCS 2, SHEET 3-1Va
  - CHARGE INLET SIMILAR TO IEC62196-2.TYPE 2, SHEET 2-2
  - ADAPTIVE CABLES SEE APPLICATION SPECIFICATION 114-xxxxx
  - SPECIFIED IN PRODUCT SPECIFICATION 108-xxxxx
  - COMPATIBLE PCB CONNECTOR: PN 1-794617-2 WITH TERMINAL PN 0-794606-1
  - FUNCTIONAL AND ELECTRICAL REQUIREMENTS OF ACTUATOR SEE SPECIFICATION 108-94519
  - CHECK FEEDBACK SIGNAL OF THE ACTUATOR: FEEDBACK TIME < 10MS (AFTER REACHING FINAL POSITION)  
2mA < LOCK POSITION < 4mA  
15mA < UNLOCK POSITION < 19mA  
8mA < PARTIAL LOCK POSITION < 12mA  
8V-SUPPLY VOLTAGE<16V
  - MAX VOLTAGE RATING 480 VAC  
MAX CURRENT RATING 32 A
  - MAX VOLTAGE RATING 1000 VDC  
MAX CURRENT RATING 200 A
  - ALL COMPONENTS OF THE PARTS LIST ARE DELIVERED IN SEPARATE SUBPACKAGES

3-2293469-2 & 4-2293469-2  
4 WIRE VARIANT:



PINNING PCB

PIN NO.	COMBO 1
6	T DC+
7	Proxi
8	GND, Temp
9	T DC-
10	T AC
11	PE S
12	CP

TEST ITEM	RESISTANCE MEASUREMENT		VALUE *T <sub>amb</sub> = 25 ± 5 °C
	TEST PINS		
TAC	10	8	1097 Ω ± 20 Ω
TDC+	6	8	1097 Ω ± 20 Ω
TDC-	9	8	1097 Ω ± 20 Ω
R5	11	7	4700 Ω ± 140 Ω
Proxi	Proxi	7	0 Ω ± 1 Ω
CP	CP	12	0 Ω ± 1 Ω

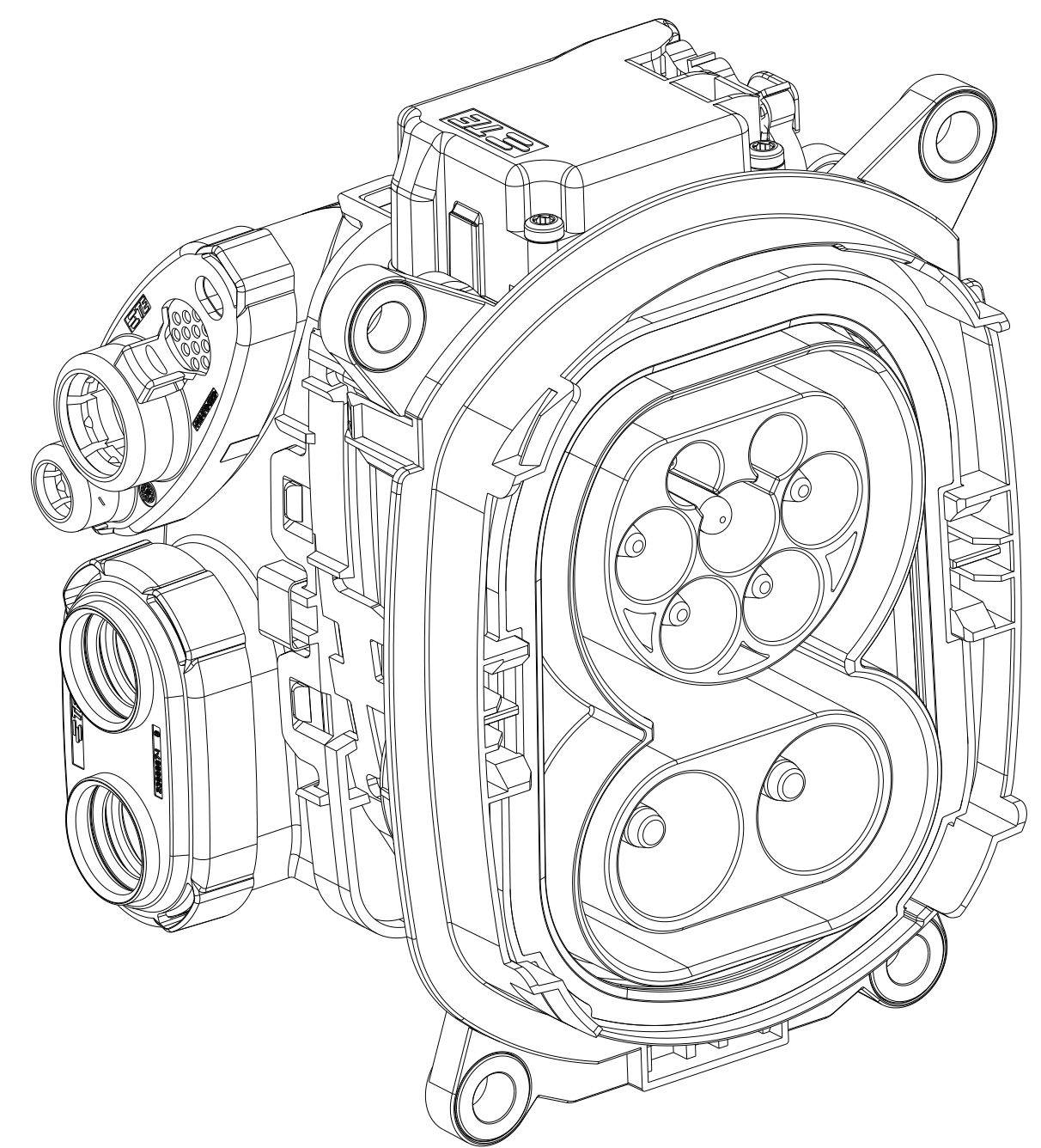
FLAP OPENING DIRECTION	RIGHT		LEFT		NO FLAP		RIGHT		LEFT		NO FLAP	
	RIGHT	LEFT	RIGHT	LEFT	RIGHT	LEFT	RIGHT	LEFT	RIGHT	LEFT	RIGHT	LEFT

REV	QTY	DESCRIPTION	WEIGHT [g]	COLOR	ITEM NO.
1	1	FLAP, ASSY, INLET COMBO 2, RIGHT	121.78	-	14
1	1	FLAP, ASSY, INLET COMBO 2, LEFT	121.78	-	14
1	1	MKS BLINDSTOPPEN	0.09	WHITE	13
1	1	COVER, CABLE SEAL, COMBO DC	6.00	ORANGE	12
1	1	FAMILY SEAL, COMBO DC	10.64	GREY	11
1	1	COVER, CABLE SEAL, AC	5.93	ORANGE	10
1	1	STRAIN RELIEF, AC	3.62	GREY	9
1	1	Family Seal, AC	6.81	RED	8
1	1	CABLE EXIT, RECT, COMBO RIGHT	46.15	-	7
1	1	CABLE EXIT, RECT, COMBO LEFT	46.15	-	7
2	2	DIA SHMPIN TERMINAL	82.29	-	5
2	2	SEALING	0.29	-	5
1	1	PROTECTION CAP CHARGE INLETS	2.16	BLACK	4
1	1	PIN DIA. 6.0, RIGID, POWER PE	10.06	-	3
1	1	DIA SHMPIN TERMINAL	12.44	-	2
1	1	COMBO 2/3 CHARGE INLET ASSY.W/OUT LED, 24V ACTUATOR	395.26	-	1
1	1	COMBO 2/3 CHARGE INLET ASSY.W/OUT LED, 24V ACTUATOR	395.36	-	1

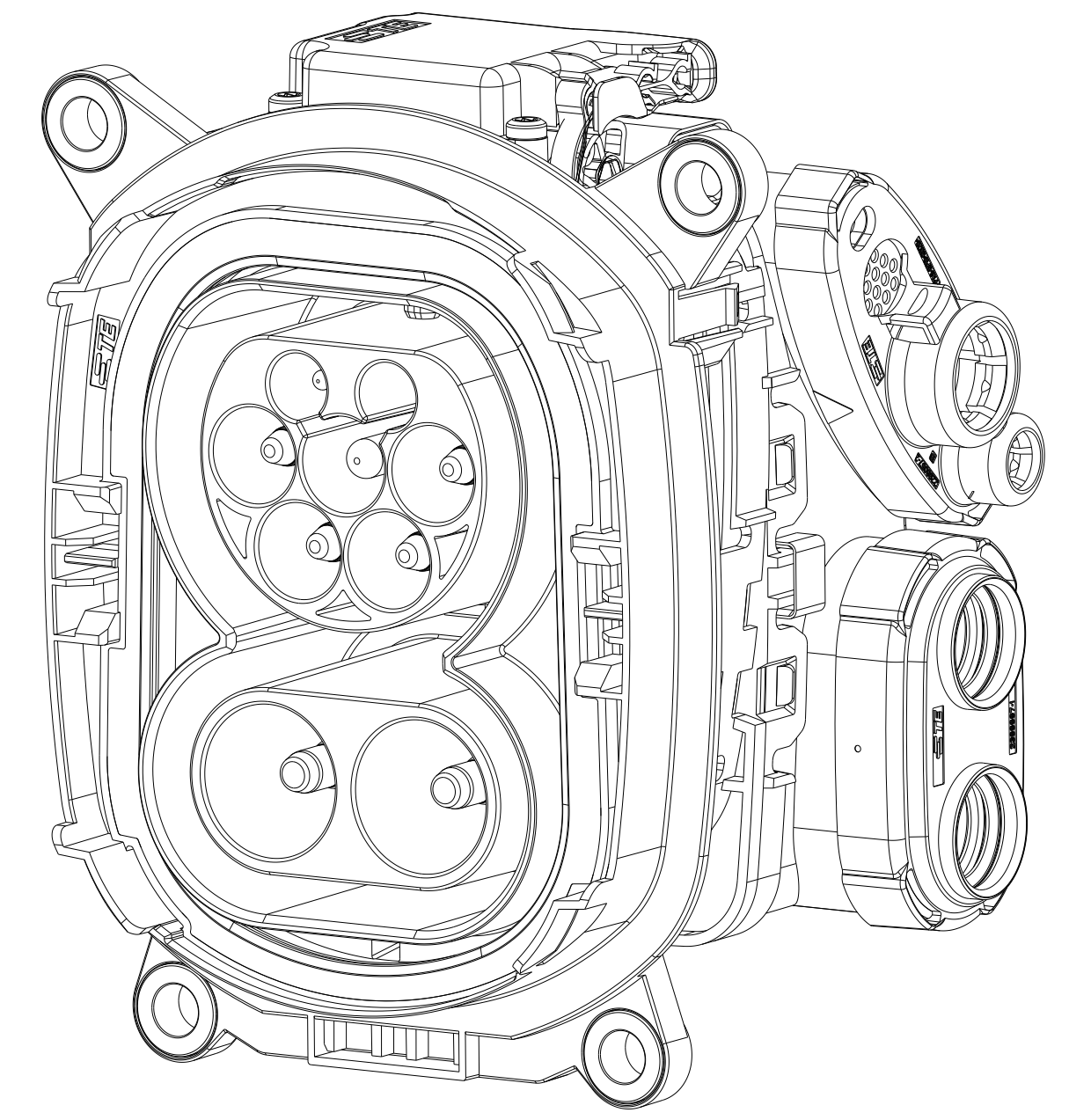
VARIANTS OVERVIEW

REVISIONS			
REV	DATE	DESCRIPTION	BY
-	-	SEE SHEET 1	-

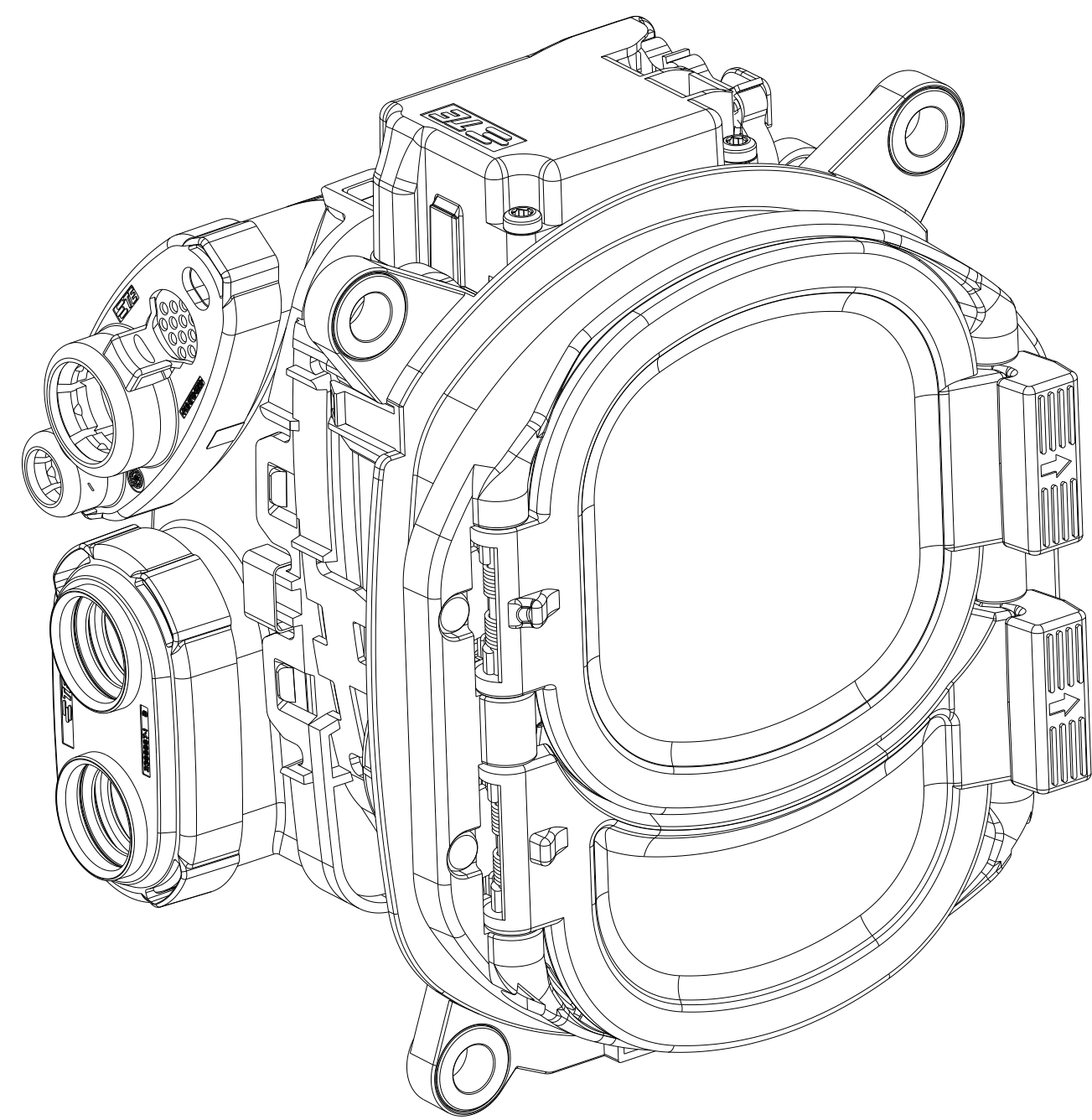
NO FLAP  
CABLE EXIT LEFT  
0-2375502-1



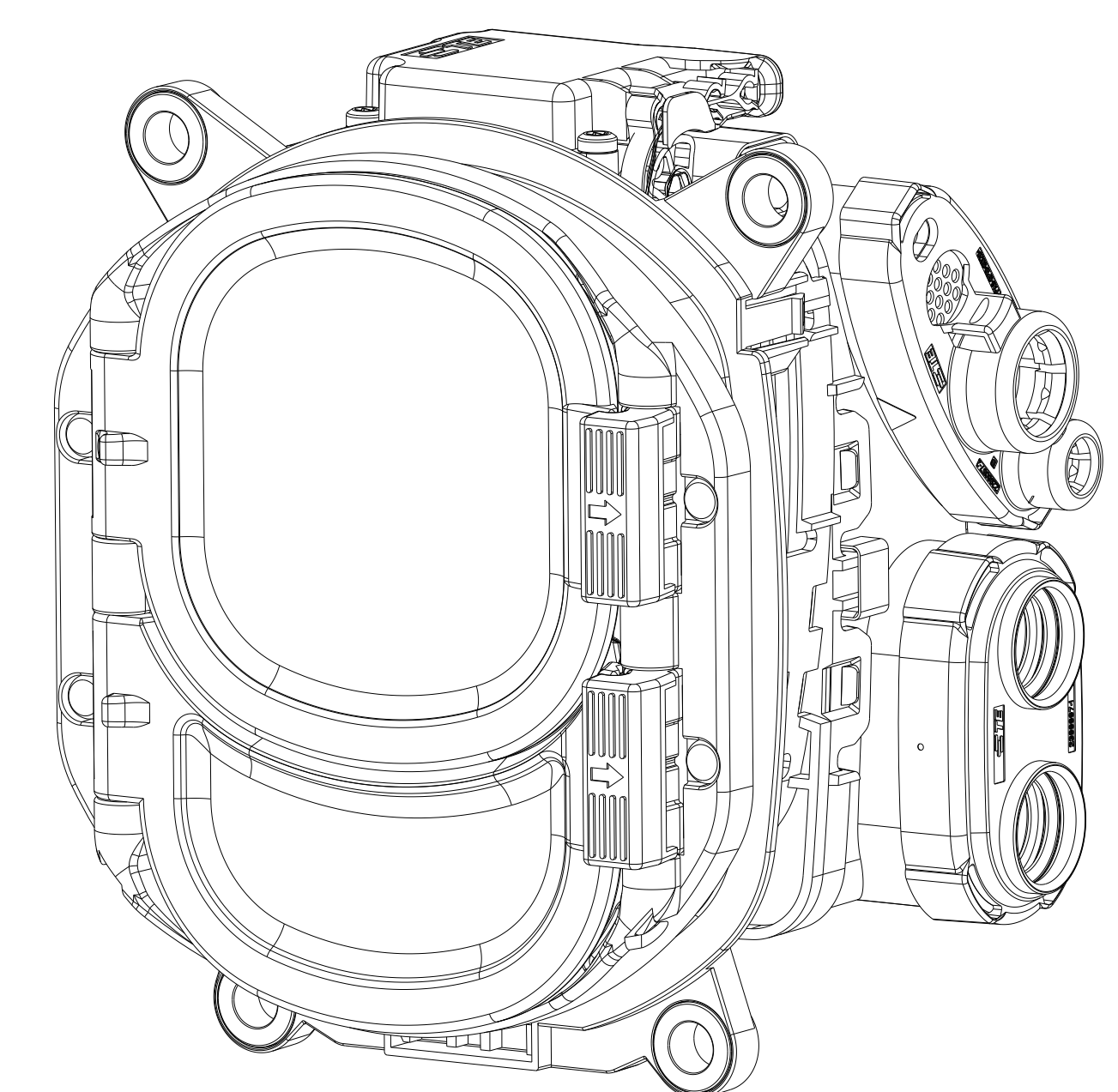
NO FLAP  
CABLE EXIT RIGHT  
0-2375502-2



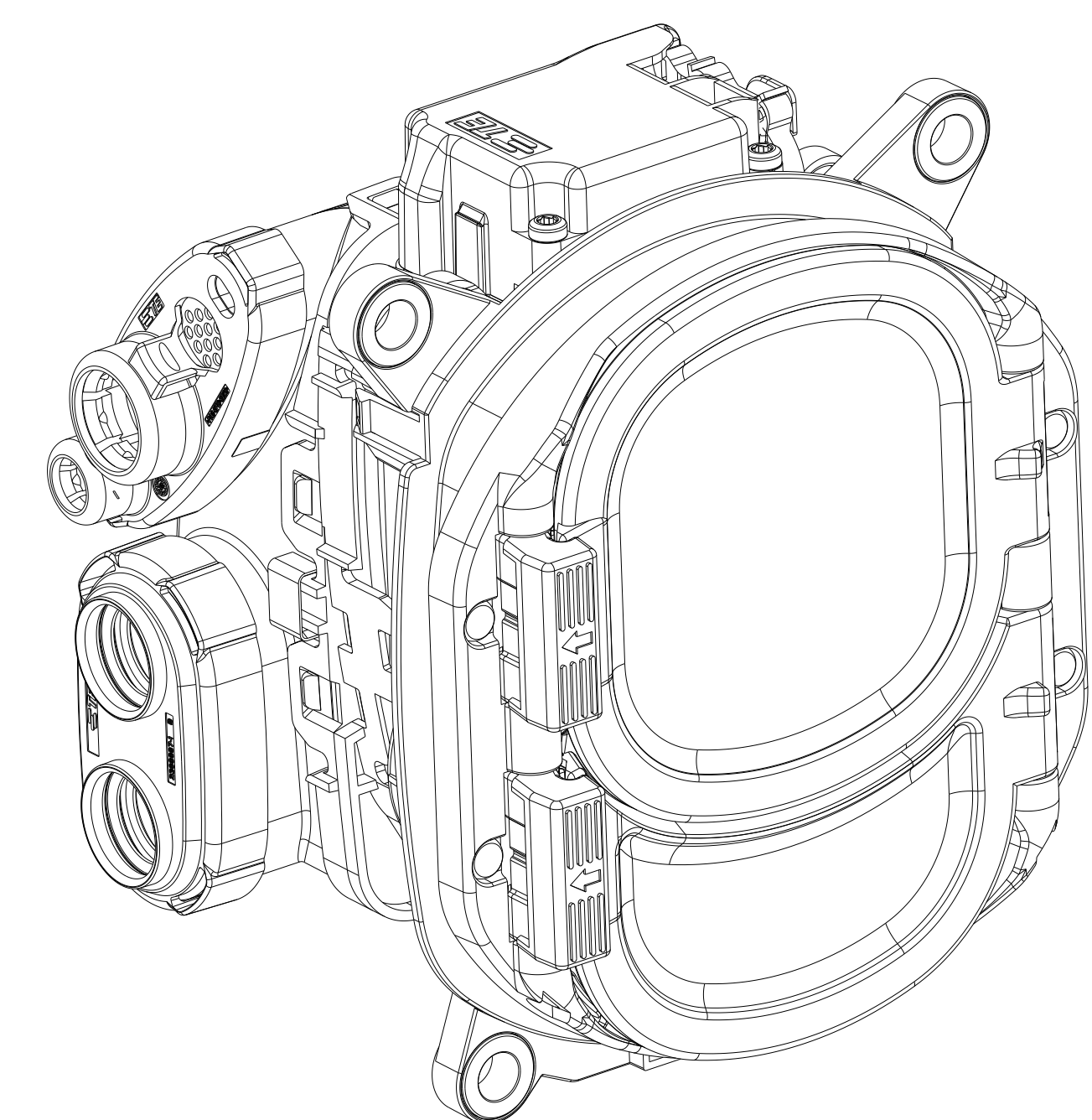
FLAP OPEN LEFT  
CABLE EXIT LEFT  
0-2375502-3



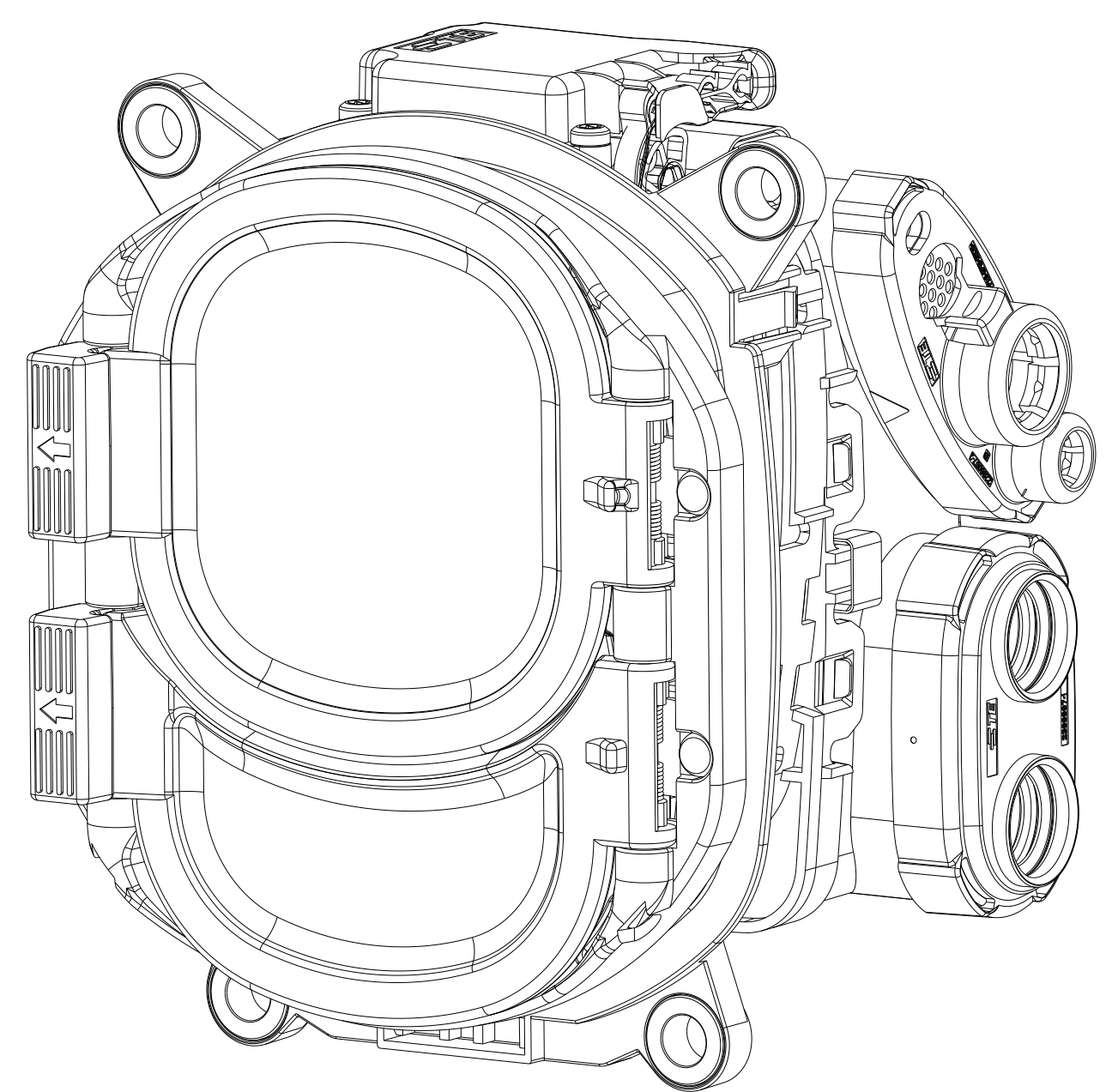
FLAP OPEN LEFT  
CABLE EXIT RIGHT  
0-2375502-4



FLAP OPEN RIGHT  
CABLE EXIT LEFT  
0-2375502-5



FLAP OPEN RIGHT  
CABLE EXIT RIGHT  
0-2375502-6



THIS DRAWING IS A CONTROLLED DOCUMENT. DATE: 26AUG2020  
 DIMENSIONING AND TOLERANCING PER: U.S. Std. 28AUG2020  
 DIMENSIONS: UNLESS OTHERWISE SPECIFIED: INCH 28AUG2020  
 TITLE: CHARGE INLET KIT, COMBO2, 90 DEGREE

DESIGNED BY: J. K. Astor	DATE: 28AUG2020	APPROVED BY: S. Kosch	DATE: 28AUG2020
CHECKED BY: J. K. Astor	DATE: 28AUG2020	APPROVED BY: J. K. Astor	DATE: 28AUG2020

NAME: CHARGE INLET KIT, COMBO2, 90 DEGREE

SIZE: A0	CAGE CODE: 00779	DRAWING NO: C=2375502	RESTRICTED TO: -
MATERIAL: FINISH:		WEIGHT:	SCALE: 1:1
CUSTOMER DRAWING		SHEET: 2 of 2	REV: B

STE TE Connectivity