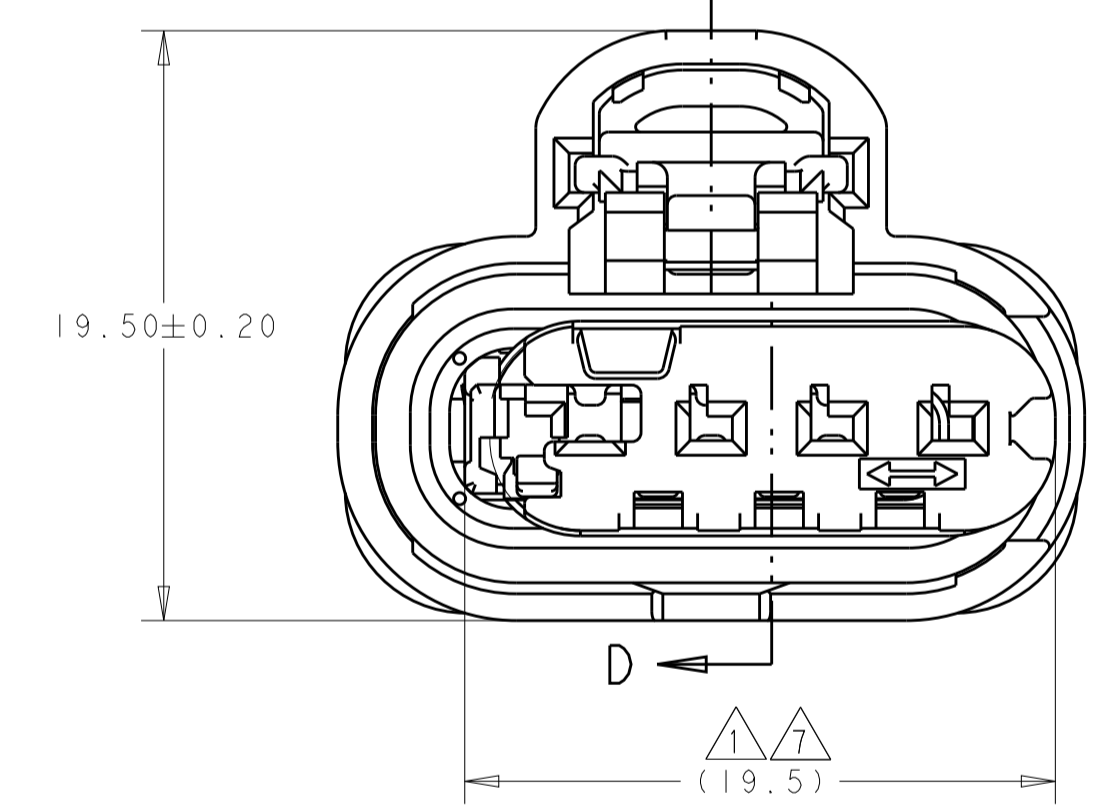
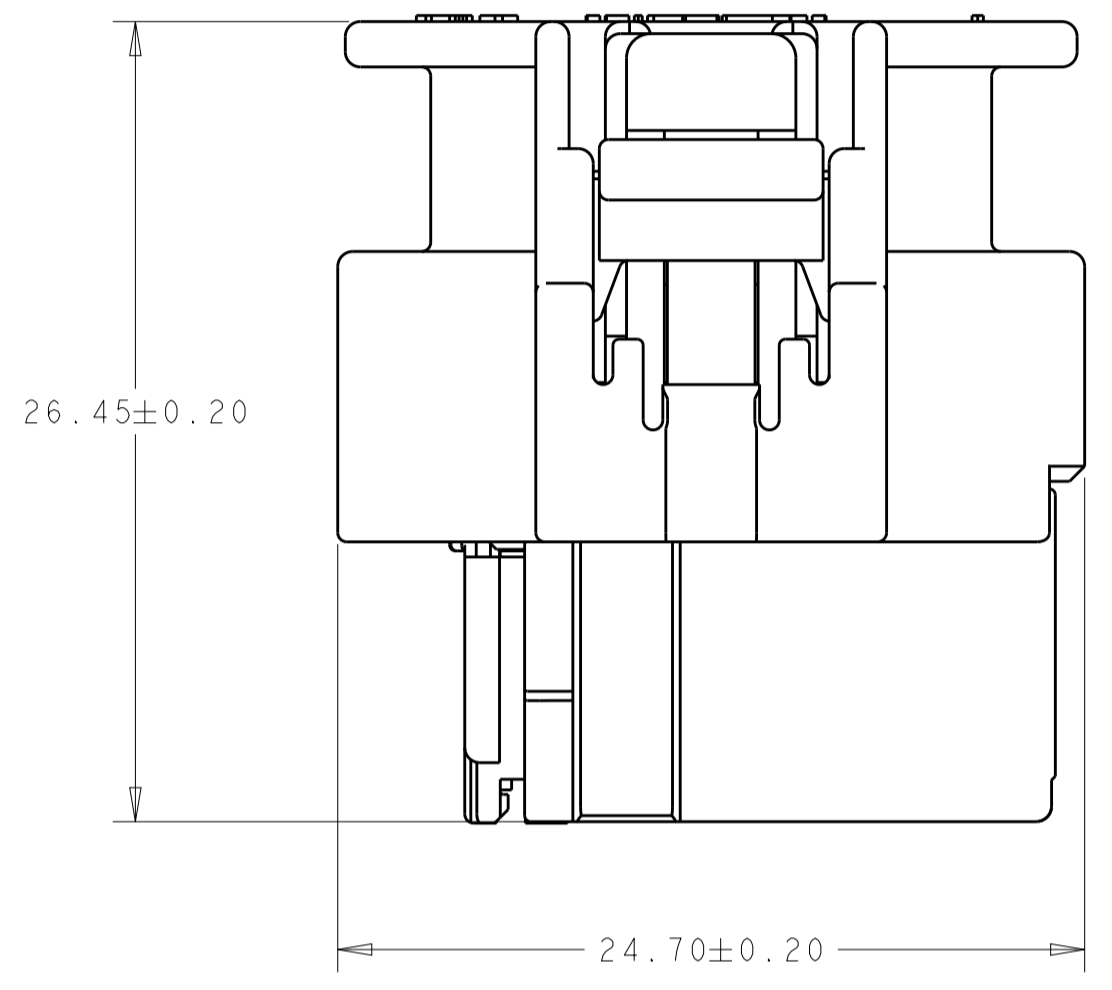
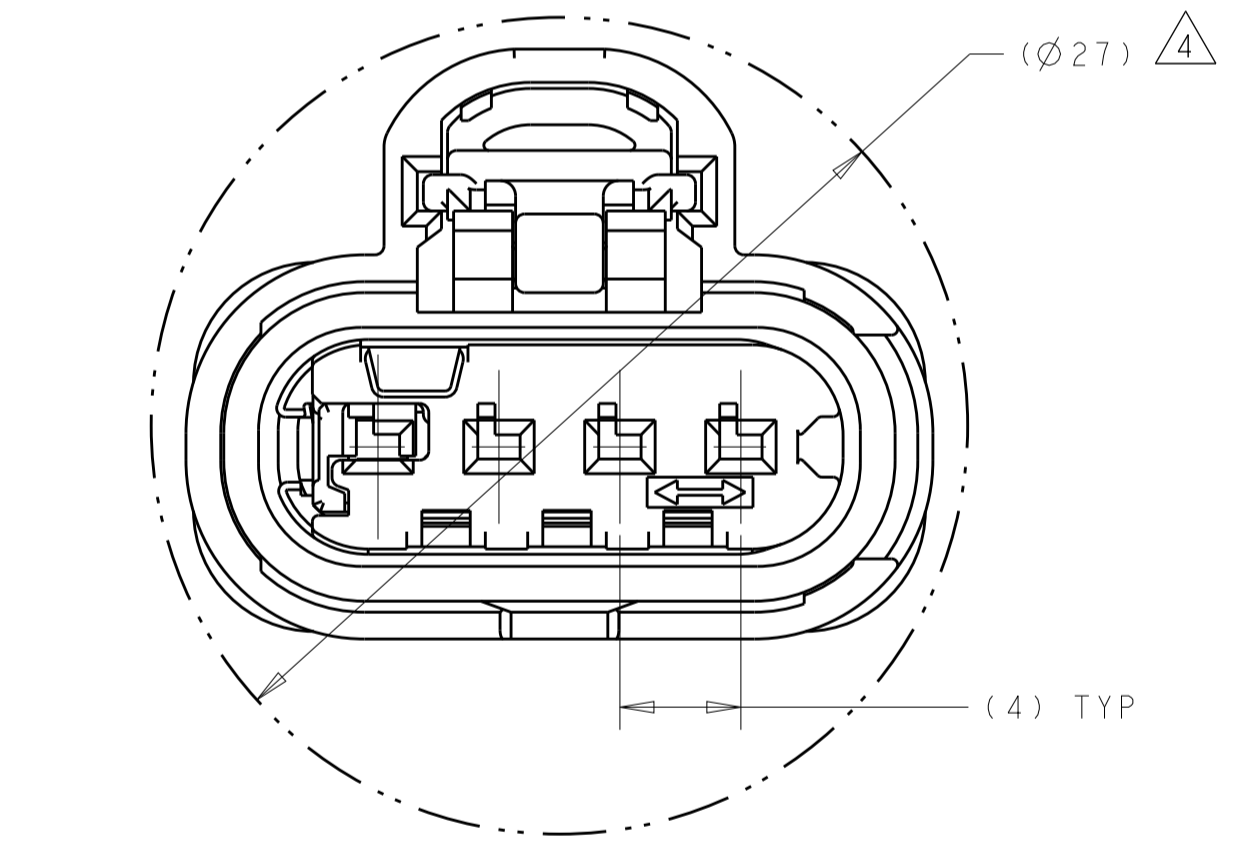


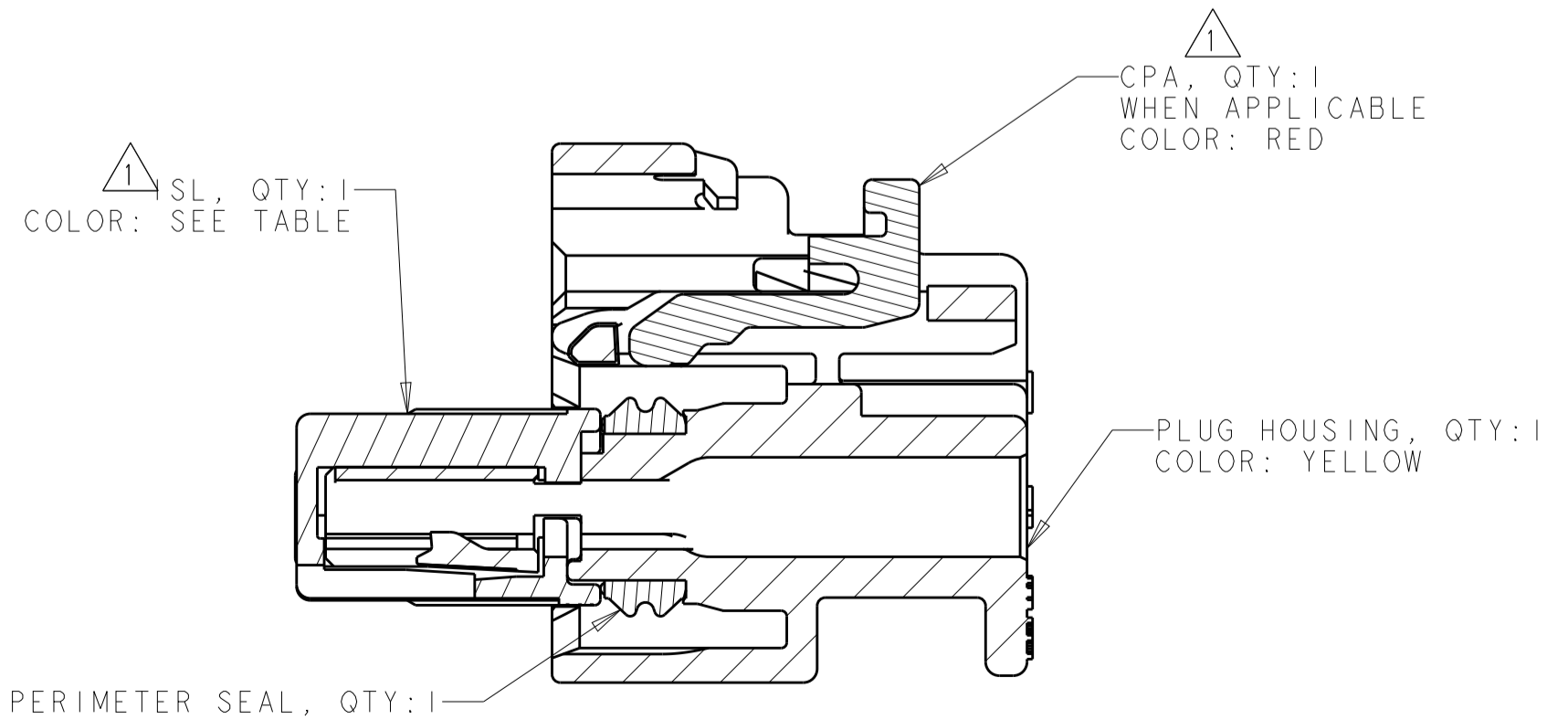
ISOMETRIC VIEW  
SCALE 4:1



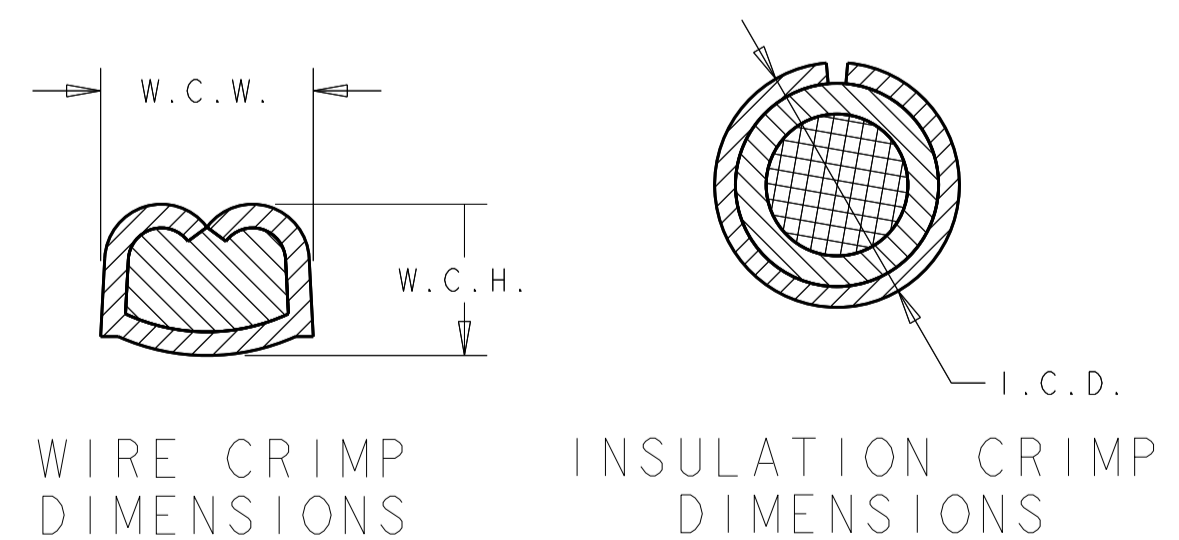
ISL SHOWN IN  
PRE-LATCHED POSITION



ISL SHOWN IN  
FINAL POSITION REF ONLY  
SCALE 4:1



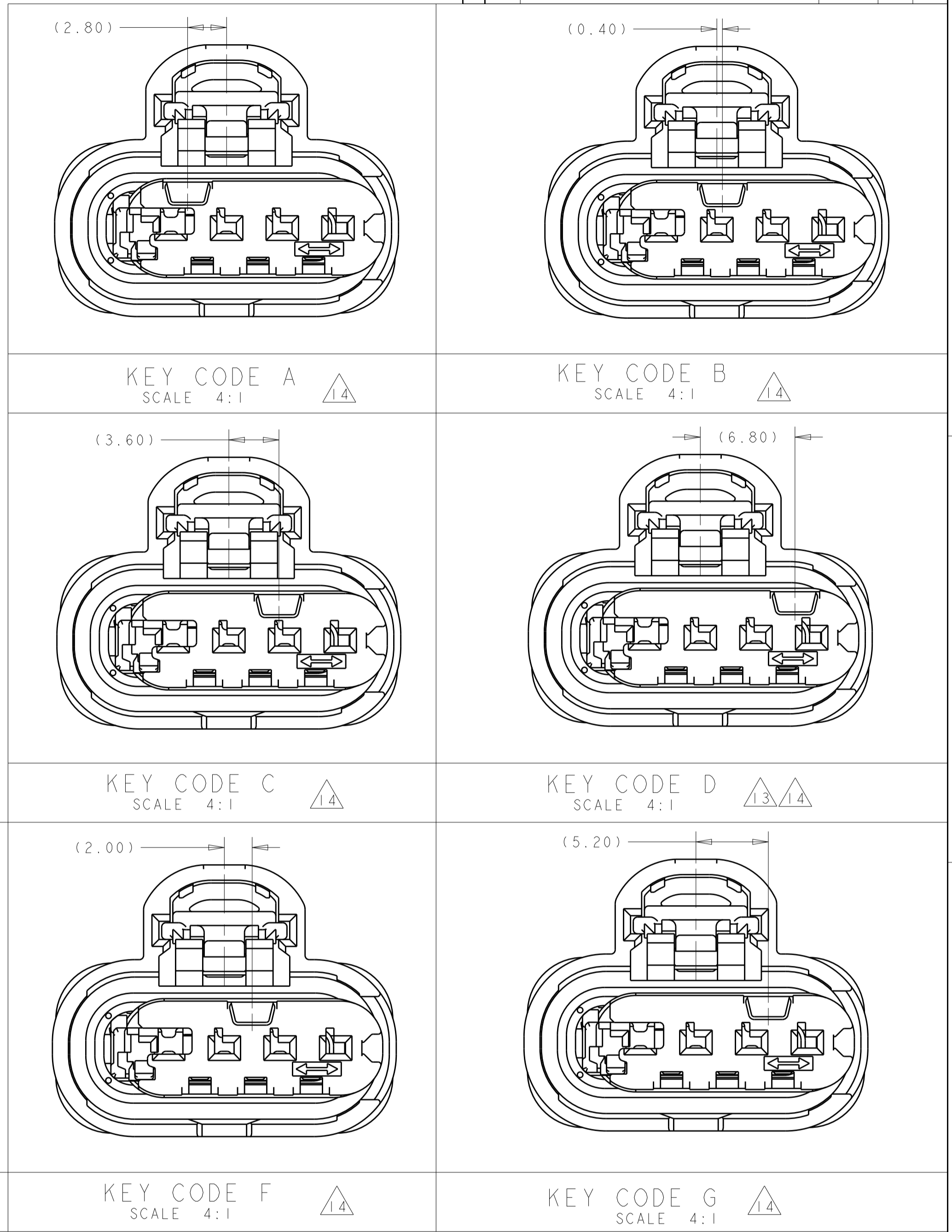
SECTION D-D  
WITH CPA SHOWN IN  
PRE-LATCHED POSITION  
SCALE 4:1



WIRE CRIMP DIMENSIONS  
INSULATION CRIMP DIMENSIONS

1. TPA AND CPA (OPTIONAL) ARE SHIPPED IN THEIR PRE-LATCHED POSITIONS
2. TERMINALS SOLD SEPARATELY. FOR USE WITH TE MCON 1.2mm CLEAN BODY CONTACT AND WIRE SEAL, SEE TABLE
3. APPLICABLE INTERFACE DRAWINGS : EWCAP 120-S-004-1-Z01 AND 120-S-004-1-Z02
4. MINIMUM FEED-THROUGH CONDITION WITH 1.0mm CLEARANCE ALL AROUND
5. TRACEABILITY CODE (YY = TWO DIGIT YEAR, JJJ = 3 DIGIT JULIAN DAY, S = 1 DIGIT SHIFT).
6. FOR OPTIONAL TERMINAL CAVITY BLOCKING, CONTACT TE SALES REPRESENTATIVE OR CUSTOMER SERVICE
7. SEE INSTRUCTION SHEET 408-32103 FOR CONNECTOR SERVICE AND ISL OPERATION, ISL ACTUATION DISTANCE IS 2.0mm
8. PRIMARY LOCK TERMINAL RETENTION FORCE 35N MINIMUM.
9. CONTACT PLATING AND APPLICABLE INDIVIDUAL WIRE SEAL ARE APPLICATION DEPENDENT, CONTACT TE SALES REPRESENTATIVE OR CUSTOMER SERVICE FOR DETAILS
10. FOR WIRE CRIMP DETAILS, SEE TE APPLICATION SPECIFICATION 114-18464.
11. DOCUMENTED I.C.D. IS SPECIFIED TO MEET MOST WIRE SEAL APPLICATIONS. HOWEVER, I.C.D. IS HIGHLY DEPENDENT ON INSULATION TYPE AND O.D. SUFFICIENT GRIP OF THE WIRE SEAL MUST BE OBTAINED SUCH THAT WIRE SEAL DOES NOT DISPLACE FROM INSULATION GRIP DURING CONTACT INSERTION INTO CONNECTOR HOUSING. THE WIRE SEAL SHALL NOT BE CRIMPED TOO TIGHTLY THAT THE WIRE SEAL TEARS DURING THE CRIMPING OPERATION.
12. NOTE REMOVED.
13. KEY CODE NOT TOOLED
14. KEY CODE DIMENSIONS ARE SHOWN WITH ISL IN PRE-LATCHED POSITION. FOR DIMENSION OF KEY WITH ISL IN FINAL POSITION, ADJUST SHOWN DIMENSIONS BY 2.0mm.
15. MATES WITH STRAIGHT EXIT WIRE DRESS, TE PN 2272162-1 AND RIGHT ANGLE EXIT WIRE DRESS, TE PN 2272163-1

| REVISIONS |     |                            |           |        |
|-----------|-----|----------------------------|-----------|--------|
| P.        | LTN | DESCRIPTION                | DATE      | APP'D  |
| A         |     | RELEASED PER ECO-16-010790 | 07NOV2016 | DD JT  |
| A1        |     | REVISED PER ECO-17-002820  | 01MAR2017 | VP MDB |



KEY CODE A  
SCALE 4:1

KEY CODE B  
SCALE 4:1

KEY CODE C  
SCALE 4:1

KEY CODE D  
SCALE 4:1

KEY CODE E  
SCALE 4:1

KEY CODE F  
SCALE 4:1

KEY CODE G  
SCALE 4:1

|            |                      |             |
|------------|----------------------|-------------|
| BLACK      | G                    | 2203808-7   |
| DARK GRAY  | F                    | 2203808-6   |
| LIGHT GRAY | E                    | 2203808-5   |
| BLACK      | D                    | 2203808-4   |
| DARK GRAY  | C                    | 2203808-3   |
| LIGHT GRAY | B                    | 2203808-2   |
| BLACK      | A                    | 2203808-1   |
| ISL COLOR  | KEYING CONFIGURATION | PART NUMBER |

|          |                     |                               |       |       |       |                       |
|----------|---------------------|-------------------------------|-------|-------|-------|-----------------------|
| 125°C    | 1418844             | 1.40 - 1.90mm                 | 10    | 10    | 10 11 | 967067-1              |
|          | 1670146             | 1.40 - 1.90mm                 |       |       |       | 967067-1              |
|          | 1418850             | 1.90 - 2.40mm                 |       |       |       | 964972-1              |
| MAX TEMP | FEMALE TERMINAL P/N | APPLICABLE WIRE FINISHED O.D. | W.C.H | W.C.W | I.C.D | WIRE SEAL PART NUMBER |

THIS DRAWING IS A CONTROLLED DOCUMENT.

TE Connectivity

PLUG ASSEMBLY, FEMALE, SEALED, 4 POSITION, MCON SIR

100779C=2203808

SCALE 5:1 SHEET 1 OF 1 REV A1