

High-current terminal block - PTPOWER 150 F



3215030

<https://www.phoenixcontact.com/us/products/3215030>

Please be informed that the data shown in this PDF document is generated from our Online Catalog. Please find the complete data in the user documentation. Our General Terms of Use for Downloads are valid.



High-current terminal block, nom. voltage: 1500 V, nominal current: 309 A, connection method: PowerTurn connection, 1 level, cross section: 50 mm² - 150 mm², mounting type: direct screw connection, color: gray

Commercial Data

Item number	3215030
Packing unit	1 pc
Minimum order quantity	3 pc
Note	Made to Order (non-returnable)
Sales Key	B02
Product Key	BE2211
Catalog Page	Page 131 (C-1-2017)
GTIN	4046356903486
Weight per Piece (including packing)	359.3 g
Weight per Piece (excluding packing)	359.3 g
Customs tariff number	85369010
Country of origin	PL

High-current terminal block - PTPOWER 150 F



3215030

<https://www.phoenixcontact.com/us/products/3215030>

Technical Data

Product properties

Product type	High current terminal block
Number of positions	1
Pitch	31 mm
Number of connections	2
Number of rows	1
Potentials	1

Insulation characteristics

Overvoltage category	III
Degree of pollution	3

Electrical properties

Rated surge voltage	8 kV
---------------------	------

Connection data

Number of connections per level	2
Nominal cross section	150 mm ²

1 level

Stripping length	40 mm
Internal cylindrical gage	B14
Conductor cross section solid	50 mm ² ... 150 mm ²
Cross section AWG	1/0 ... 300 kcmil (converted acc. to IEC)
Conductor cross section flexible	50 mm ² ... 150 mm ²
Conductor cross section, flexible [AWG]	1/0 ... 300 kcmil (converted acc. to IEC)
Flexible conductor cross section flexible (ferrule, w/o plastic sleeve)	50 mm ² ... 95 mm ²
Flexible conductor cross section (ferrule with plastic sleeve)	50 mm ² ... 95 mm ²
Cross-section with insertion bridge, rigid	50 mm ² ... 150 mm ²
Cross-section with insertion bridge, flexible	50 mm ² ... 150 mm ²
Cross-section with insertion bridge, flexible, with ferrule without plastic sleeve	50 mm ² ... 95 mm ²
Cross-section with insertion bridge, flexible, with ferrule with plastic sleeve	50 mm ² ... 95 mm ²
Nominal current	309 A
Maximum load current	309 A (with 150 mm ² conductor cross section)
Nominal voltage	1500 V DC
	1000 V AC

1 level Connection cross sections directly pluggable

Conductor cross section solid	50 mm ² ... 150 mm ²
Flexible conductor cross section flexible (ferrule, w/o plastic sleeve)	50 mm ² ... 95 mm ²

High-current terminal block - PTPOWER 150 F



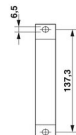
3215030

<https://www.phoenixcontact.com/us/products/3215030>

Flexible conductor cross section (ferrule with plastic sleeve)

50 mm² ... 95 mm²

Dimensions

Dimensional drawing	
Width	31 mm
Height	108.3 mm
Length	150 mm
Drill hole spacing	137.2 mm
Hole diameter	6.5 mm
Pitch	31 mm

Material specifications

Color	gray
Flammability rating according to UL 94	V0
Insulating material group	I
Insulating material	PA
Static insulating material application in cold	-60 °C
Temperature index of insulation material (DIN EN 60216-1 (VDE 0304-21))	125 °C
Relative insulation material temperature index (Elec., UL 746 B)	130 °C
Fire protection for rail vehicles (DIN EN 45545-2) R22	HL 1 - HL 3
Fire protection for rail vehicles (DIN EN 45545-2) R23	HL 1 - HL 3
Fire protection for rail vehicles (DIN EN 45545-2) R24	HL 1 - HL 3
Fire protection for rail vehicles (DIN EN 45545-2) R26	HL 1 - HL 3
Calorimetric heat release NFPA 130 (ASTM E 1354)	27,5 MJ/kg
Surface flammability NFPA 130 (ASTM E 162)	passed
Specific optical density of smoke NFPA 130 (ASTM E 662)	passed
Smoke gas toxicity NFPA 130 (SMP 800C)	passed

Electrical tests

Surge voltage test

Test voltage setpoint	14.8 kV
Result	Test passed

Temperature-rise test

Requirement temperature-rise test	Increase in temperature ≤ 45 K
Result	Test passed
Short-time withstand current 150 mm²	18 kA
Result	Test passed

Power-frequency withstand voltage

High-current terminal block - PTPOWER 150 F



3215030

<https://www.phoenixcontact.com/us/products/3215030>

Result	Test passed
--------	-------------

Mechanical properties

Mechanical data

Open side panel	No
-----------------	----

Technical data

Drill hole spacing	137.2 mm
--------------------	----------

Mechanical tests

Mechanical strength

Result	Test passed
--------	-------------

Attachment on the carrier

Test force setpoint	15 N
Result	Test passed

Test for conductor damage and slackening

Rotation speed	10 rpm
Revolutions	135
Conductor cross section/weight	50 mm ² / 9.5 kg
	150 mm ² / 15 kg
Result	Test passed

Environmental and real-life conditions

Aging

Temperature cycles	192
Result	Test passed

Needle-flame test

Time of exposure	30 s
Result	Test passed

Oscillation/broadband noise

Specification	DIN EN 50155 (VDE 0115-200):2008-03
Spectrum	Service life test category 1, class B, body mounted
Frequency	$f_1 = 5 \text{ Hz}$ to $f_2 = 150 \text{ Hz}$
ASD level	0.964 (m/s ²) ² /Hz
Acceleration	0.58g
Test duration per axis	5 h
Test directions	X-, Y- and Z-axis
Result	Test passed

Shocks

Specification	DIN EN 50155 (VDE 0115-200):2008-03
Pulse shape	Half-sine

High-current terminal block - PTPOWER 150 F



3215030

<https://www.phoenixcontact.com/us/products/3215030>

Acceleration	5g
Shock duration	30 ms
Number of shocks per direction	3
Test directions	X-, Y- and Z-axis (pos. and neg.)
Result	Test passed

Standards and regulations

Connection in acc. with standard	IEC 60947-7-1
----------------------------------	---------------

Mounting

Mounting type	direct screw connection
---------------	-------------------------

High-current terminal block - PTPOWER 150 F

3215030

<https://www.phoenixcontact.com/us/products/3215030>

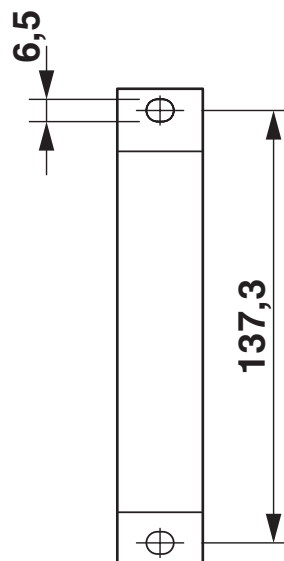


Drawings

Circuit diagram



Dimensional drawing



High-current terminal block - PTPOWER 150 F



3215030

<https://www.phoenixcontact.com/us/products/3215030>

Classifications

ETIM

ETIM 7.0	EC000897
----------	----------

High-current terminal block - PTPOWER 150 F



3215030

<https://www.phoenixcontact.com/us/products/3215030>

Environmental Product Compliance

China RoHS	Environmentally friendly use period: unlimited = EFUP-e
	No hazardous substances above threshold values


High-current terminal block - PTPOWER 150 F



3215030

<https://www.phoenixcontact.com/us/products/3215030>

Accessories

 Note: Applying some accessories below might limit this product.

Insertion bridge

Insertion bridge - EB 2-31/PT - 3215057

<https://www.phoenixcontact.com/us/products/3215057>

Insertion bridge, pitch: 31 mm, color: red



 Max. current carrying capacity: 232 A

Insertion bridge

Insertion bridge - EB 3-31/PT - 3215058

<https://www.phoenixcontact.com/us/products/3215058>

Insertion bridge, pitch: 31 mm, color: red



 Max. current carrying capacity: 232 A

High-current terminal block - PTPOWER 150 F



3215030

<https://www.phoenixcontact.com/us/products/3215030>

Pick-off terminal block

Pick-off terminal block - AGK 10-PTPOWER - 3260145

<https://www.phoenixcontact.com/us/products/3260145>



Pick-off terminal block, For use with PTPOWER 50, 95, 150, and 185 PowerTurn high-current terminal blocks, nom. voltage: 1500 V, nominal current: 57 A, connection method: Push-in connection, 1 level, Rated cross section: 10 mm², cross section: 0.5 mm² - 16 mm², mounting type: on base element, color: gray

Pick-off terminal block

Pick-off terminal block - AGK 10-PTPOWER BU - 3260148

<https://www.phoenixcontact.com/us/products/3260148>



Pick-off terminal block, For use with PTPOWER 50, 95, 150, and 185 PowerTurn high-current terminal blocks, nom. voltage: 1500 V, nominal current: 57 A, connection method: Push-in connection, 1 level, Rated cross section: 10 mm², cross section: 0.5 mm² - 16 mm², mounting type: on base element, color: blue

High-current terminal block - PTPOWER 150 F



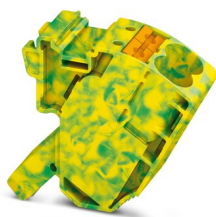
3215030

<https://www.phoenixcontact.com/us/products/3215030>

Pick-off terminal block

Pick-off terminal block - AGK 10-PTPOWER GN/YE - 3260151

<https://www.phoenixcontact.com/us/products/3260151>



Pick-off terminal block, For use with PTPOWER 50, 95, 150, and 185 PowerTurn high-current terminal blocks, nom. voltage: 1500 V, nominal current: 57 A, connection method: Push-in connection, 1 level, Rated cross section: 10 mm², cross section: 0.5 mm² - 16 mm², mounting type: on base element, color: green/yellow

Pick-off terminal block

Pick-off terminal block - AGK 10-PTPOWER BK/YE - 3260154

<https://www.phoenixcontact.com/us/products/3260154>



Pick-off terminal block, For use with PTPOWER 50, 95, 150, and 185 PowerTurn high-current terminal blocks, nom. voltage: 1500 V, nominal current: 57 A, connection method: Push-in connection, 1 level, Rated cross section: 10 mm², cross section: 0.5 mm² - 16 mm², mounting type: on base element, color: black/yellow

High-current terminal block - PTPOWER 150 F



3215030

<https://www.phoenixcontact.com/us/products/3215030>

Screwdriver

Screwdriver - SZF 3-1,0X5,5 - 1206612

<https://www.phoenixcontact.com/us/products/1206612>



Actuation tool, for ST terminal blocks, also suitable for use as a bladed screwdriver, size: 1.0 x 5.5 x 150 mm, 2-component grip, with non-slip grip

DIN rail perforated

DIN rail perforated - NS 35/15 PERF 2000MM - 1201730

<https://www.phoenixcontact.com/us/products/1201730>



DIN rail perforated, similar to EN 60715, material: Steel, galvanized, passivated with a thick layer, Standard profile, color: silver, Pack of 25 (50 m)

High-current terminal block - PTPOWER 150 F



3215030

<https://www.phoenixcontact.com/us/products/3215030>

DIN rail, unperforated

DIN rail, unperforated - NS 35/15 UNPERF 2000MM - 1201714

<https://www.phoenixcontact.com/us/products/1201714>



DIN rail, unperforated, similar to EN 60715, material: Steel, galvanized, passivated with a thick layer, Standard profile, color: silver, Pack of 25 (50 m)

DIN rail perforated

DIN rail perforated - NS 35/15 WH PERF 2000MM - 0806602

<https://www.phoenixcontact.com/us/products/0806602>



DIN rail perforated, similar to EN 60715, material: Steel, Galvanized, white passivated, Standard profile, color: white, Pack of 25 (50 m)

High-current terminal block - PTPOWER 150 F



3215030

<https://www.phoenixcontact.com/us/products/3215030>

DIN rail, unperforated

DIN rail, unperforated - NS 35/15 WH UNPERF 2000MM-VPE 10 - 1204135

<https://www.phoenixcontact.com/us/products/1204135>



DIN rail, unperforated, similar to EN 60715, material: Steel, Galvanized, white passivated, Standard profile, color: silver, Pack of 10 (20 m)

DIN rail, unperforated

DIN rail, unperforated - NS 35/15 AL UNPERF 2000MM - 1201756

<https://www.phoenixcontact.com/us/products/1201756>



DIN rail, unperforated, similar to EN 60715, material: Aluminum, uncoated, Standard profile, color: silver

High-current terminal block - PTPOWER 150 F



3215030

<https://www.phoenixcontact.com/us/products/3215030>

DIN rail perforated

DIN rail perforated - NS 35/15 ZN PERF 2000MM - 1206599

<https://www.phoenixcontact.com/us/products/1206599>



DIN rail perforated, similar to EN 60715, material: Steel, galvanized, Standard profile, color: silver, Pack of 25 (50 m)

DIN rail, unperforated

DIN rail, unperforated - NS 35/15 ZN UNPERF 2000MM - 1206586

<https://www.phoenixcontact.com/us/products/1206586>



DIN rail, unperforated, similar to EN 60715, material: Steel, galvanized, Standard profile, color: silver, Pack of 25 (50 m)

High-current terminal block - PTPOWER 150 F



3215030

<https://www.phoenixcontact.com/us/products/3215030>

DIN rail, unperforated

DIN rail, unperforated - NS 35/15 CU UNPERF 2000MM-VPE 10 - 1201895

<https://www.phoenixcontact.com/us/products/1201895>



DIN rail, unperforated, similar to EN 60715, material: Copper, uncoated, Standard profile, color: copper-colored, Pack of 10 (20 m)

End cap

End cap - NS 35/15 CAP - 1206573

<https://www.phoenixcontact.com/us/products/1206573>

DIN rail end piece, for DIN rail NS 35/15



High-current terminal block - PTPOWER 150 F



3215030

<https://www.phoenixcontact.com/us/products/3215030>

End clamp

End clamp - E/AL-NS 35 - 1201662

<https://www.phoenixcontact.com/us/products/1201662>



End clamp, for end support of UKH 50 to UKH 240, is pushed onto DIN rail NS 35 and fixed with 2 screws, width: 10 mm, color: aluminum

Marker for terminal blocks

Marker for terminal blocks - TMT (EX9,5)R - 0828295

<https://www.phoenixcontact.com/us/products/0828295>



Marker for terminal blocks, Roll, white, unlabeled, can be labeled with: THERMOMARK ROLL 2.0, THERMOMARK ROLL, THERMOMARK ROLL X1, THERMOMARK ROLLMaster 300/600, THERMOMARK X1.2, mounting type: snapped, snap into tall marker groove, lettering field size: 9.5 x 50000 mm, Number of individual labels: 1

High-current terminal block - PTPOWER 150 F



3215030

<https://www.phoenixcontact.com/us/products/3215030>

Marker for terminal blocks

Marker for terminal blocks - US-TM 100 - 0829255

<https://www.phoenixcontact.com/us/products/0829255>

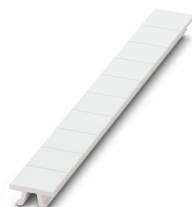


Marker for terminal blocks, Card, white, unlabeled, can be labeled with: BLUEMARK ID COLOR, BLUEMARK ID, THERMOMARK PRIME, THERMOMARK CARD 2.0, THERMOMARK CARD, mounting type: snapped, lettering field size: 104 x 9.8 mm, Number of individual labels: 13

Zack marker strip

Zack marker strip - ZB 10:UNBEDRUCKT - 1053001

<https://www.phoenixcontact.com/us/products/1053001>



Zack marker strip, Strip, white, unlabeled, can be labeled with: PLOTMARK, CMS-P1-PLOTTER, mounting type: snapped, for terminal block width: 10.2 mm, lettering field size: 10.5 mm x 10.15 mm, Number of individual labels: 10

High-current terminal block - PTPOWER 150 F



3215030

<https://www.phoenixcontact.com/us/products/3215030>

Zack marker strip

Zack marker strip - ZB 10 CUS - 0824941

<https://www.phoenixcontact.com/us/products/0824941>



Zack marker strip, can be ordered: Strip, white, labeled according to customer specifications, mounting type: snap into tall marker groove, for terminal block width: 10.2 mm, lettering field size: 10.15 x 10.5 mm, Number of individual labels: 10

Zack marker strip

Zack marker strip - ZB10,LGS:FORTL.ZAHLEN - 1053014

<https://www.phoenixcontact.com/us/products/1053014>



Zack marker strip, Strip, white, labeled, can be labeled with: CMS-P1-PLOTTER, printed horizontally: consecutive numbers 1 ... 10, 11 ... 20, etc. up to 91 ... 100, mounting type: snapped, for terminal block width: 10.2 mm, lettering field size: 10.15 x 10.5 mm, Number of individual labels: 10

High-current terminal block - PTPOWER 150 F



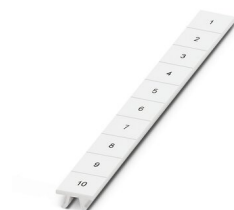
3215030

<https://www.phoenixcontact.com/us/products/3215030>

Zack marker strip

Zack marker strip - ZB10,QR:FORTL.ZAHLEN - 1053027

<https://www.phoenixcontact.com/us/products/1053027>

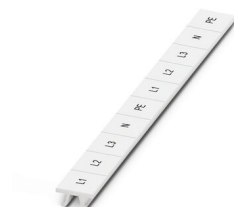


Zack marker strip, Strip, white, labeled, can be labeled with: CMS-P1-PLOTTER, Printed vertically: consecutive numbers 1 ... 10, 11 ... 20, etc. up to 91 ... 100, mounting type: snapped, for terminal block width: 10.2 mm, lettering field size: 10.15 x 10.5 mm, Number of individual labels: 10

Marker for terminal blocks

Marker for terminal blocks - ZB10,LGS:L1-N,PE - 1053412

<https://www.phoenixcontact.com/us/products/1053412>



Marker for terminal blocks, Strip, white, labeled, can be labeled with: CMS-P1-PLOTTER, horizontal: L1, L2, L3, N, PE, L1, L2, L3, N, PE, mounting type: snapped, for terminal block width: 10.2 mm, lettering field size: 10.15 x 10.5 mm, Number of individual labels: 10

High-current terminal block - PTPOWER 150 F



3215030

<https://www.phoenixcontact.com/us/products/3215030>

Marker for terminal blocks

Marker for terminal blocks - ZB10,LGS:U-N - 1053438

<https://www.phoenixcontact.com/us/products/1053438>

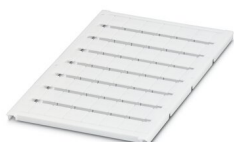


Marker for terminal blocks, Strip, white, labeled, can be labeled with: CMS-P1-PLOTTER, horizontal: U, V, W, N, GND, U, V, W, N, GND, mounting type: snapped, for terminal block width: 10.2 mm, lettering field size: 10.15 x 10.5 mm, Number of individual labels: 10

Marker for terminal blocks

Marker for terminal blocks - UC-TM 10 - 0818069

<https://www.phoenixcontact.com/us/products/0818069>



Marker for terminal blocks, Sheet, white, unlabeled, can be labeled with: BLUEMARK ID COLOR, BLUEMARK ID, BLUEMARK CLED, PLOTMARK, CMS-P1-PLOTTER, mounting type: snapped, for terminal block width: 10.2 mm, lettering field size: 9.6 x 10.5 mm, Number of individual labels: 48

High-current terminal block - PTPOWER 150 F



3215030

<https://www.phoenixcontact.com/us/products/3215030>

Marker for terminal blocks

Marker for terminal blocks - UC-TM 10 CUS - 0824605

<https://www.phoenixcontact.com/us/products/0824605>



Marker for terminal blocks, can be ordered: by sheet, white, labeled according to customer specifications, mounting type: snap into tall marker groove, for terminal block width: 10.2 mm, lettering field size: 9.6 x 10.5 mm, Number of individual labels: 48

Marker for terminal blocks

Marker for terminal blocks - UCT-TM 10 - 0829142

<https://www.phoenixcontact.com/us/products/0829142>



Marker for terminal blocks, Sheet, white, unlabeled, can be labeled with: TOPMARK NEO, TOPMARK LASER, BLUEMARK ID COLOR, BLUEMARK ID, BLUEMARK CLED, THERMOMARK PRIME, THERMOMARK CARD 2.0, THERMOMARK CARD, mounting type: snapped, for terminal block width: 10.2 mm, lettering field size: 8.9 x 9.6 mm, Number of individual labels: 36

High-current terminal block - PTPOWER 150 F



3215030

<https://www.phoenixcontact.com/us/products/3215030>

Marker for terminal blocks

Marker for terminal blocks - UCT-TM 10 CUS - 0829623

<https://www.phoenixcontact.com/us/products/0829623>



Marker for terminal blocks, can be ordered: by sheet, white, labeled according to customer specifications, mounting type: snap into tall marker groove, for terminal block width: 10.2 mm, lettering field size: 8.9 x 9.6 mm, Number of individual labels: 36

Zack marker strip

Zack marker strip - ZB 20,3:UNPRINTED - 0820248

<https://www.phoenixcontact.com/us/products/0820248>



Zack marker strip, Strip, white, unlabeled, can be labeled with: PLOTMARK, CMS-P1-PLOTTER, mounting type: snapped, for terminal block width: 20.3 mm, lettering field size: 10.5 x 20.25 mm, Number of individual labels: 5

High-current terminal block - PTPOWER 150 F



3215030

<https://www.phoenixcontact.com/us/products/3215030>

Zack marker strip

Zack marker strip - ZB 20,3 CUS - 0824948

<https://www.phoenixcontact.com/us/products/0824948>



Zack marker strip, can be ordered: Strip, white, labeled according to customer specifications, mounting type: snap into tall marker groove, for terminal block width: 20.3 mm, lettering field size: 10.5 x 20.25 mm, Number of individual labels: 5

Test plugs

Test plugs - MPS-MT - 0201744

<https://www.phoenixcontact.com/us/products/0201744>



Test plugs, with solder connection up to 1 mm² conductor cross section, color: gray

High-current terminal block - PTPOWER 150 F



3215030

<https://www.phoenixcontact.com/us/products/3215030>

Insulating sleeve

Insulating sleeve - MPS-IH WH - 0201663

<https://www.phoenixcontact.com/us/products/0201663>

Insulating sleeve, color: white



Insulating sleeve

Insulating sleeve - MPS-IH RD - 0201676

<https://www.phoenixcontact.com/us/products/0201676>

Insulating sleeve, color: red



High-current terminal block - PTPOWER 150 F



3215030

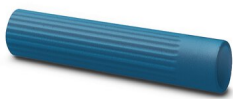
<https://www.phoenixcontact.com/us/products/3215030>

Insulating sleeve

Insulating sleeve - MPS-IH BU - 0201689

<https://www.phoenixcontact.com/us/products/0201689>

Insulating sleeve, color: blue



Insulating sleeve

Insulating sleeve - MPS-IH YE - 0201692

<https://www.phoenixcontact.com/us/products/0201692>

Insulating sleeve, color: yellow



High-current terminal block - PTPOWER 150 F



3215030

<https://www.phoenixcontact.com/us/products/3215030>

Insulating sleeve

Insulating sleeve - MPS-IH GN - 0201702

<https://www.phoenixcontact.com/us/products/0201702>

Insulating sleeve, color: green



Insulating sleeve

Insulating sleeve - MPS-IH GY - 0201728

<https://www.phoenixcontact.com/us/products/0201728>

Insulating sleeve, color: gray



High-current terminal block - PTPOWER 150 F



3215030

<https://www.phoenixcontact.com/us/products/3215030>

Insulating sleeve

Insulating sleeve - MPS-IH BK - 0201731

<https://www.phoenixcontact.com/us/products/0201731>

Insulating sleeve, color: black



Software

Software - PROJECT COMPLETE - 1050453

<https://www.phoenixcontact.com/us/products/1050453>



Intuitive planning and marking software for configuring terminal strips and for professional marking of marking materials for terminal blocks, conductors, cables, devices, and systems. The software is available for download

High-current terminal block - PTPOWER 150 F



3215030

<https://www.phoenixcontact.com/us/products/3215030>

Ferrule

Ferrule - A 25 -40 - 3241238

<https://www.phoenixcontact.com/us/products/3241238>



Ferrule, length: 40 mm, color: silver

Ferrule

Ferrule - A 35 -40 - 3241239

<https://www.phoenixcontact.com/us/products/3241239>



Ferrule, length: 40 mm, color: silver

High-current terminal block - PTPOWER 150 F



3215030

<https://www.phoenixcontact.com/us/products/3215030>

Ferrule

Ferrule - A 50 -40 - 3241240

<https://www.phoenixcontact.com/us/products/3241240>



Ferrule, length: 40 mm, color: silver

Ferrule

Ferrule - A 70 -40 - 3241241

<https://www.phoenixcontact.com/us/products/3241241>



Ferrule, length: 40 mm, color: silver

High-current terminal block - PTPOWER 150 F



3215030

<https://www.phoenixcontact.com/us/products/3215030>

Ferrule

Ferrule - A 95 -40 - 3241242

<https://www.phoenixcontact.com/us/products/3241242>

Ferrule, length: 40 mm, color: silver



Crimping pliers

Crimping pliers - CRIMPFOX 50R - 1212041

<https://www.phoenixcontact.com/us/products/1212041>



Crimping pliers, for ferrules without insulating collar according to DIN 46228 Part 1 and ferrules with insulating collar according to DIN 46228 Part 4, 35 mm² ... 50 mm², lateral entry, WM crimp

High-current terminal block - PTPOWER 150 F



3215030

<https://www.phoenixcontact.com/us/products/3215030>

Crimping pliers

Crimping pliers - CRIMPFOX-M - 1212072

<https://www.phoenixcontact.com/us/products/1212072>

Basic pliers, for accommodating dies for a wide range of type of contacts



Crimping pliers

Crimping pliers - CRIMPFOX-C120 - 1212318

<https://www.phoenixcontact.com/us/products/1212318>

Basic pliers, for accommodating dies for a wide range of type of contacts up to 120 mm²



Phoenix Contact 2022 © - all rights reserved
<https://www.phoenixcontact.com>

Phoenix Contact USA
586 Fulling Mill Road
Middletown, PA 17057, United States
(+717) 944-1300
info@phoenixcon.com