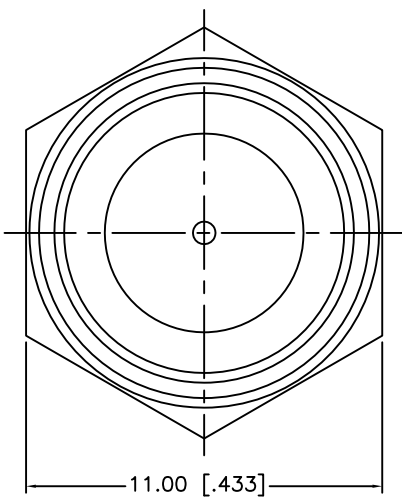
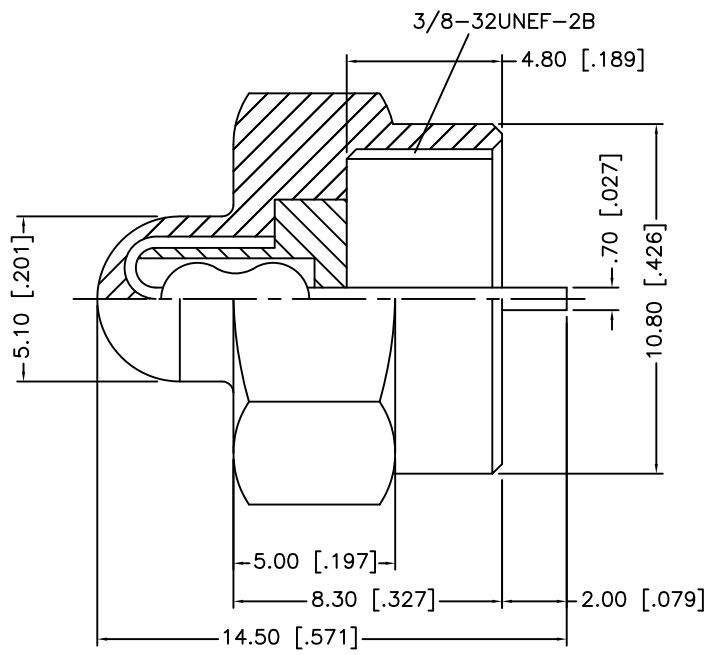


REV.	DATE	ECR#	DESCRIPTION
A	04/09/03	-----	UPDATE PART DESCRIPTION
B	07/29/06	-----	REVISE CONTACT PIN PLATING TO NICKEL
C	06/19/14	2759	INSULATOR MATERIAL WAS TEFLON



- NOTES:
- 1. RESISTOR: 75ohms - 1/8 WATT 1%
  - 2. FREQUENCY: 0 - 3 Ghz
  - 3. RETURN LOSS: 30 dB AT 1 Ghz

				UNLESS OTHERWISE SPECIFIED DIMENSIONS ARE IN MILLIMETERS. DIMENSIONS IN [ ] ARE IN INCHES AND FOR CUSTOMER REFERENCE ONLY.  UNLESS OTHERWISE SPECIFIED TOLERANCES FOR MILLIMETERS ARE: 0.5 – 8mm ± 0.20mm 8 – 30mm ± 0.40mm 30 – 120mm ± 0.50mm  UNLESS OTHERWISE SPECIFIED TOLERANCES FOR INCHES ARE: .020 – .315 = ± 0.007" .315 – 1.180 = ± 0.015" 1.180 – 4.724 = ± 0.020"	APPROVALS		DATE		Amphenol Connex			
8					DRAWN	G.R.S.	07/29/06					
7												
6					CHECKED		PART DESCRIPTION  F MALE TERMINATOR					
5					ISSUED							
4						PART NO.  222154						
3	INSULATOR	DELTRIN	NATURAL	1								
2	CONTACT PIN	STEEL	NICKEL	1		DWG. NO. 222154.DWG						
1	HOUSING/BODY	DIECAST	NICKEL	1								
	DESCRIPTION	MATERIAL	FINISH	QTY	DO NOT SCALE DRAWING	CAD FILE	C:/222/222154.DWG		REV. C	SIZE A	SCALE NA	