

Flush-type connector - SACC-CIP-M12FS-12P SMD R32



1411995

<https://www.phoenixcontact.com/us/products/1411995>

Please be informed that the data shown in this PDF document is generated from our Online Catalog. Please find the complete data in the user documentation. Our General Terms of Use for Downloads are valid.



Flush-type connector, 12-position, Socket, straight, M12, A - standard, PCB mounting, SMD

Your advantages

- Reduced mounting costs thanks to two-piece device connector
- Packaging available for automated pick and place assembly
- All common pin assignments and codings available
- Easy device integration thanks to mechanical port screw connections with threaded attachment, press-in contour or direct integration in the front plate
- Additional gasket for the device when not plugged in

Commercial Data

Item number	1411995
Packing unit	1 pc
Minimum order quantity	100 pc
Note	Made to Order (non-returnable)
Sales Key	A11
Product Key	ABQCBK
GTIN	4046356992268
Weight per Piece (including packing)	5.9 g
Weight per Piece (excluding packing)	5.9 g
Customs tariff number	85366990
Country of origin	DE

Flush-type connector - SACC-CIP-M12FS-12P SMD R32



1411995

<https://www.phoenixcontact.com/us/products/1411995>

Technical Data

Notes

Notes on operation	The electrical and mechanical data specified assume that the connector pair is correctly locked and mounted. If the connector is unlocked and if there is a danger of contamination, the connector must be sealed using a protective cap > IP54. Influences arising from litz wires, cables or PCB assembly must also be taken into consideration.
--------------------	--

Product properties

Product type	Contact insert
Number of positions	12
Coding	A - standard
Thread type	M12

Insulation characteristics

Overvoltage category	III
Degree of pollution	3

Electrical properties

Rated surge voltage	0.8 kV
Contact resistance	$\leq 3 \text{ m}\Omega$
Insulation resistance	$\geq 100 \text{ M}\Omega$
Nominal voltage U_N	30 V
Nominal current I_N	1.5 A

Material specifications

Flammability rating according to UL 94	V0
Sealing material	FKM
Contact material	CuZn
Contact surface material	Au
Contact carrier material	PA

Connector

Insertion/withdrawal cycles	> 100
-----------------------------	-------

Connection 1

Head design	Socket
Head cable outlet	straight
Head thread type	M12
Coding	A - standard

Environmental and real-life conditions

Ambient conditions

Degree of protection (when plugged in)	IP67 (correctly plugged in and locked)
--	--

Flush-type connector - SACC-CIP-M12FS-12P SMD R32



1411995

<https://www.phoenixcontact.com/us/products/1411995>

Degree of protection	IP67
Ambient temperature (operation)	-25 °C ... 105 °C (Plug / socket)
	-40 °C ... 105 °C (without mechanical actuation)

Standards and regulations

M12

Standards/specifications	IEC 61076-2-101
--------------------------	-----------------

Mounting

Mounting type	PCB mounting
---------------	--------------

Packaging specifications

Type of packaging	Belt
-------------------	------

Flush-type connector - SACC-CIP-M12FS-12P SMD R32

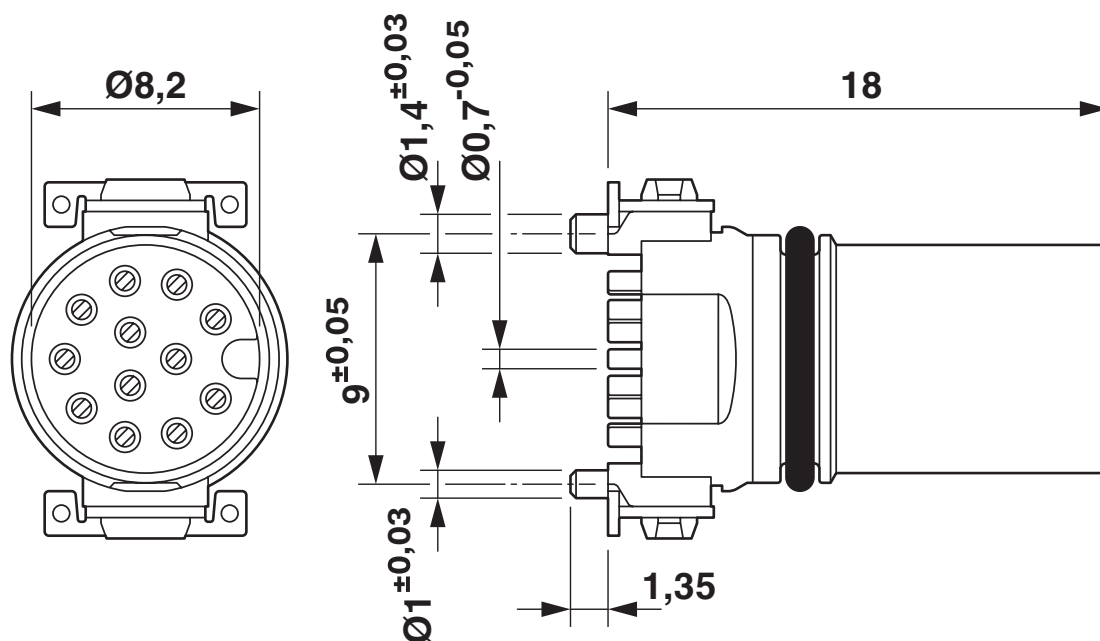


1411995

<https://www.phoenixcontact.com/us/products/1411995>

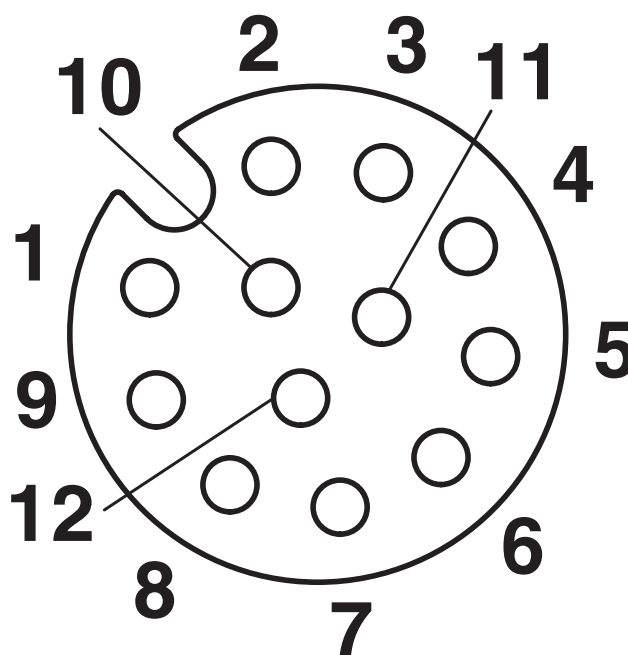
Drawings

Dimensional drawing



M12 socket, straight

Schematic diagram



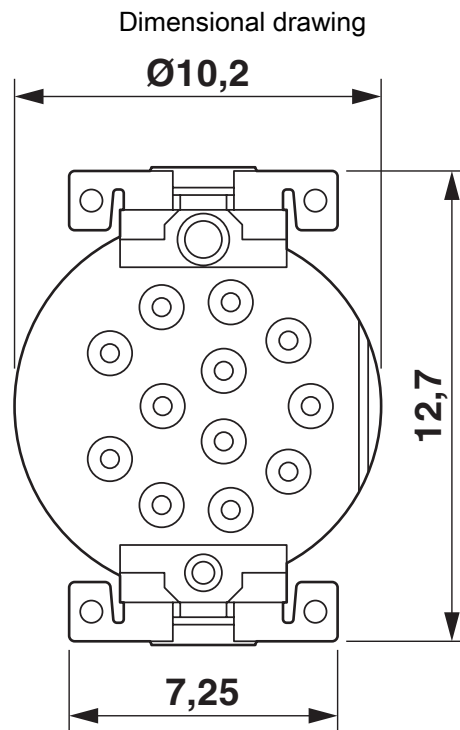
Pin assignment M12 socket, 12-pos., A-coded, view female side

Flush-type connector - SACC-CIP-M12FS-12P SMD R32



1411995

<https://www.phoenixcontact.com/us/products/1411995>



View of solder side

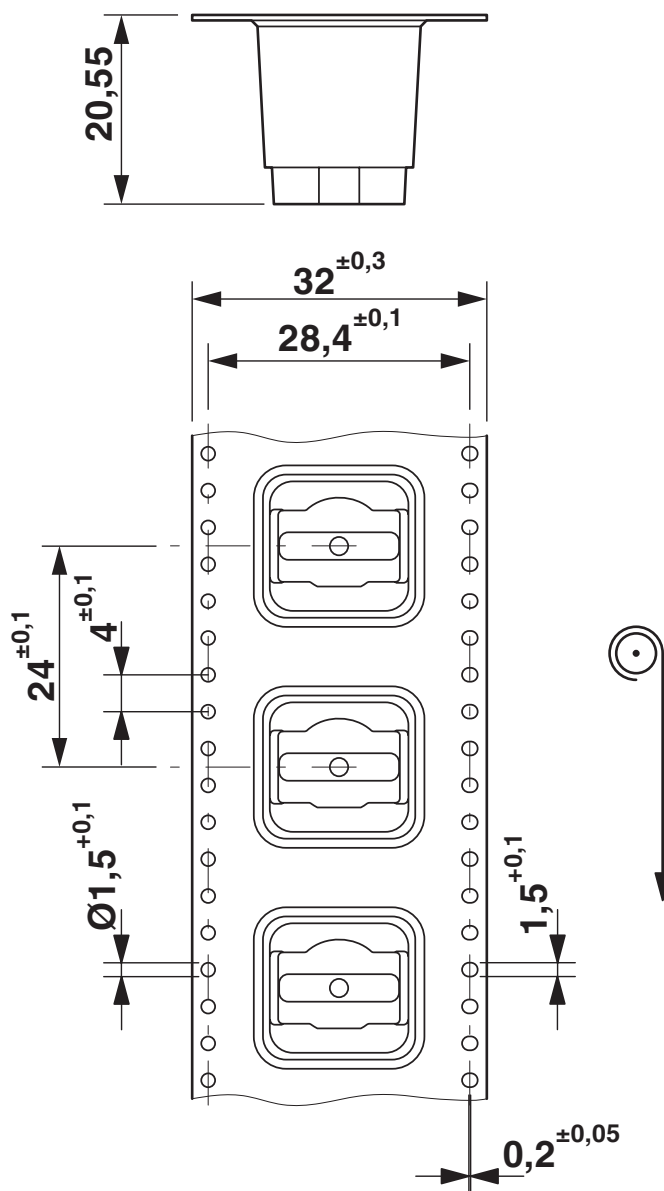
Flush-type connector - SACC-CIP-M12FS-12P SMD R32



1411995

<https://www.phoenixcontact.com/us/products/1411995>

Dimensional drawing



SMD tape-on-reel packing

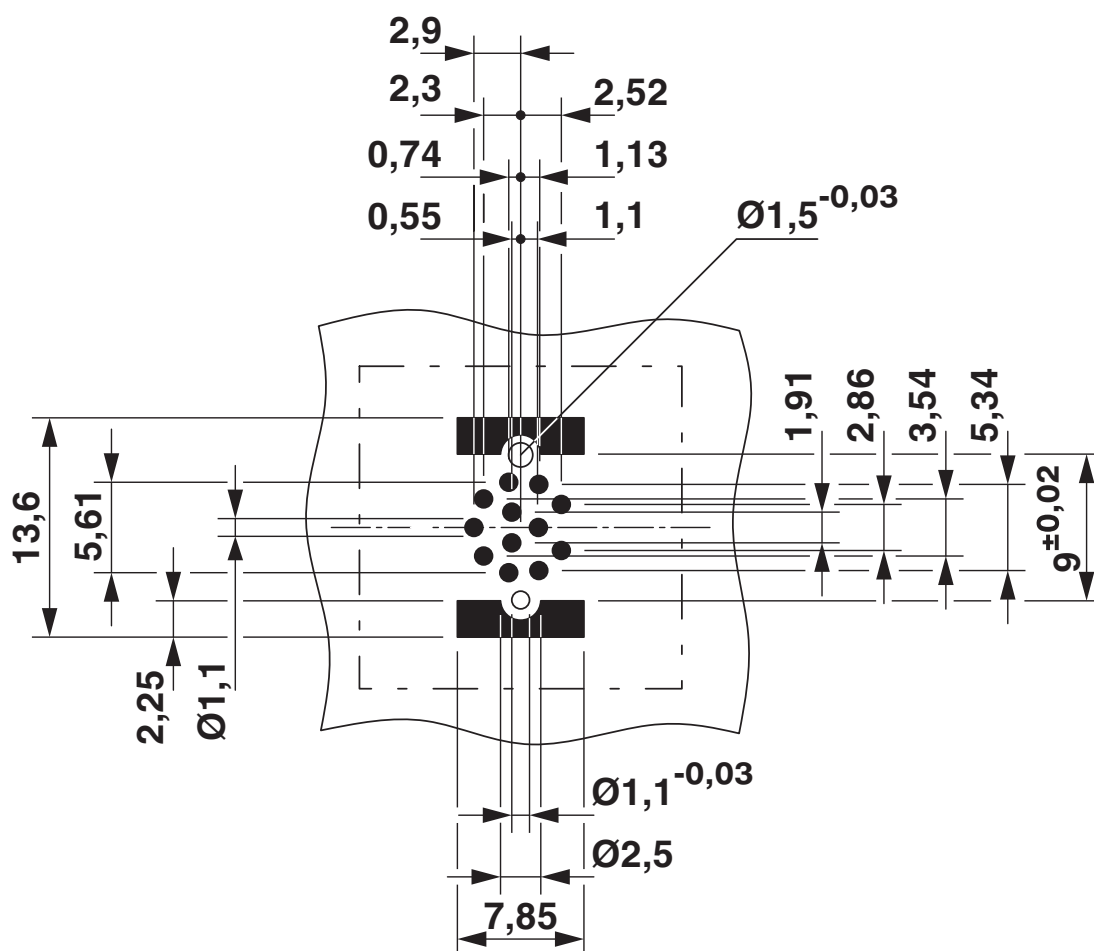
Flush-type connector - SACC-CIP-M12FS-12P SMD R32



1411995

<https://www.phoenixcontact.com/us/products/1411995>

Drilling plan/solder pad geometry



Soldering pad geometry

Flush-type connector - SACC-CIP-M12FS-12P SMD R32



1411995

<https://www.phoenixcontact.com/us/products/1411995>

Approvals



EAC

Approval ID: B.01687



cULus Recognized

Approval ID: E221474-20160506

	Nominal Voltage U_N	Nominal Current I_N	Cross Section AWG	Cross Section mm^2
	30 V	1.5 A	-	-

Flush-type connector - SACC-CIP-M12FS-12P SMD R32



1411995

<https://www.phoenixcontact.com/us/products/1411995>

Classifications

ECLASS

ECLASS-9.0	27440102
ECLASS-10.0.1	27440102
ECLASS-11.0	27440102

ETIM

ETIM 8.0	EC002635
----------	----------

UNSPSC

UNSPSC 21.0	39121400
-------------	----------

Flush-type connector - SACC-CIP-M12FS-12P SMD R32



1411995
<https://www.phoenixcontact.com/us/products/1411995>

Environmental Product Compliance

REACH SVHC	Lead 7439-92-1
China RoHS	Environmentally Friendly Use Period = 50 years
	For information on hazardous substances, refer to the manufacturer's declaration available under "Downloads"

Flush-type connector - SACC-CIP-M12FS-12P SMD R32



1411995

<https://www.phoenixcontact.com/us/products/1411995>

Accessories

Housing screw connection

Housing screw connection - SACC-BP-F-M12/M15-6-SMD - 1414021

<https://www.phoenixcontact.com/us/products/1414021>



Housing screw connection, Socket, M12, Rear mounting, M15 x 1

Housing screw connection

Housing screw connection - SACC-BP-F-M12/M15-6-SMD SCO - 1414023

<https://www.phoenixcontact.com/us/products/1414023>



Housing screw connection, Socket, M12-SPEEDCON, Rear mounting, M15 x 1

Flush-type connector - SACC-CIP-M12FS-12P SMD R32



1411995

<https://www.phoenixcontact.com/us/products/1411995>

Housing screw connection

Housing screw connection - SACC-FP-F-M12/M14 SMD - 1412079

<https://www.phoenixcontact.com/us/products/1412079>

M12 female connector, front mounting SMD with M14 screw fastening



Housing screw connection

Housing screw connection - SACC-FP-F-M12/PRESS SMD - 1412081

<https://www.phoenixcontact.com/us/products/1412081>

Housing screw connection, Socket, M12, Front mounting



Flush-type connector - SACC-CIP-M12FS-12P SMD R32



1411995

<https://www.phoenixcontact.com/us/products/1411995>

Housing screw connection

Housing screw connection - SACC-BP-F-M12/SMD-0,9/1,6-9TIP - 1419569

<https://www.phoenixcontact.com/us/products/1419569>



M12 threaded sleeve with tolerance-compensating function, for straight, SMD-solderable M12 socket contact inserts. Suitable for 0.9 mm ... 1.6 mm thick front plates.

Housing screw connection

Housing screw connection - SACC-BP-F-M12/SMD-1,6/2,3-9TIP - 1419570

<https://www.phoenixcontact.com/us/products/1419570>



M12 threaded sleeve with tolerance-compensating function, for straight, SMD-solderable M12 socket contact inserts. Suitable for 1.6 mm ... 2.3 mm thick front plates.

Flush-type connector - SACC-CIP-M12FS-12P SMD R32



1411995

<https://www.phoenixcontact.com/us/products/1411995>

Housing screw connection

Housing screw connection - SACC-BP-F-M12/SMD-2,3/3,0-9TIP - 1419571

<https://www.phoenixcontact.com/us/products/1419571>



M12 threaded sleeve with tolerance-compensating function, for straight, SMD-solderable M12 socket contact inserts. Suitable for 2.3 mm ... 3.0 mm thick front plates.

Housing screw connection

Housing screw connection - SACC-BP-F-FIX/NUT-BK-SMD - 1419568

<https://www.phoenixcontact.com/us/products/1419568>



Fixing sleeve for M12 housing screw connection with tolerance-compensating function, for SMD-solderable M12 socket contact inserts.

Flush-type connector - SACC-CIP-M12FS-12P SMD R32



1411995

<https://www.phoenixcontact.com/us/products/1411995>

Housing screw connection

Housing screw connection - SACC-BP-F-FIX/NUT-CY-SMD - 1419565

<https://www.phoenixcontact.com/us/products/1419565>



Fixing sleeve for M12 housing screw connection with tolerance-compensating function, for SMD-solderable M12 socket contact inserts.

Housing screw connection

Housing screw connection - SACC-BP-F-FIX/NUT-GN-SMD - 1419566

<https://www.phoenixcontact.com/us/products/1419566>



Fixing sleeve for M12 housing screw connection with tolerance-compensating function, for SMD-solderable M12 socket contact inserts.

Flush-type connector - SACC-CIP-M12FS-12P SMD R32



1411995

<https://www.phoenixcontact.com/us/products/1411995>

Housing screw connection

Housing screw connection - SACC-BP-F-FIX/NUT-VT-SMD - 1419567

<https://www.phoenixcontact.com/us/products/1419567>



Fixing sleeve for M12 housing screw connection with tolerance-compensating function, for SMD-solderable M12 socket contact inserts.

Phoenix Contact 2022 © - all rights reserved

<https://www.phoenixcontact.com>

Phoenix Contact USA
586 Fulling Mill Road
Middletown, PA 17057, United States
(+717) 944-1300
info@phoenixcon.com