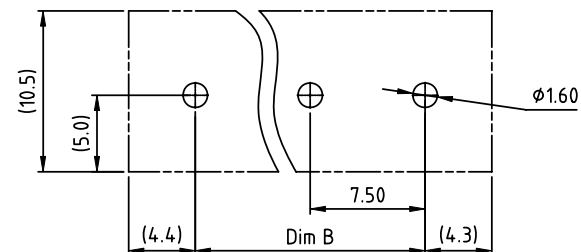
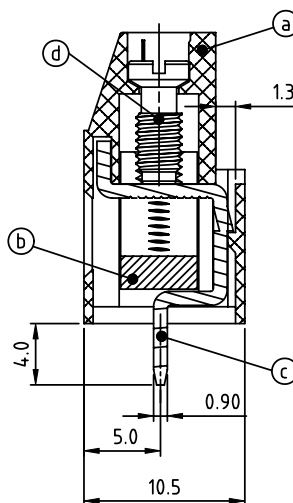
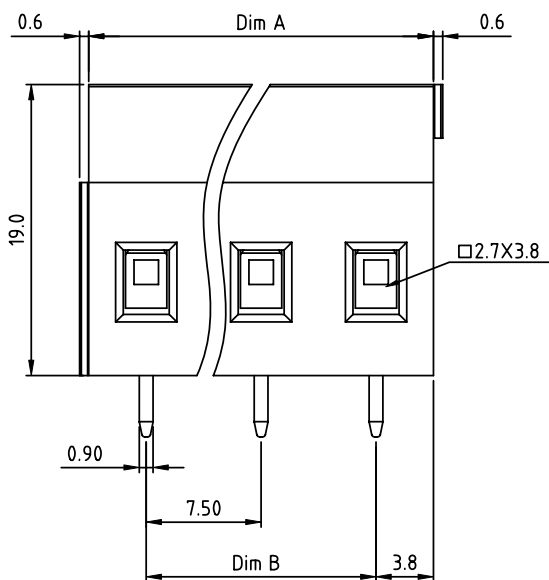
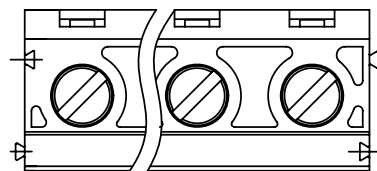


PRODUCT NUMBER	PITCH
VJxx41x500J0G	7.50 mm




RECOMMENDED P.C.B. LAYOUT
TOP VIEW

Material:

- Item (a) Terminal housing: Thermoplastic (UL 94V-0)
- Item (b) Clamp: Brass Ni plated
- Item (c) Solder pin: Brass Tin plated
- Item (d) Terminal screw: Steel Zinc plating"-slot type

Electrical cULus / VDE

- Voltage rating : 300VAC / 750V
- Current rating : 20A / 24A
- Wire range : 0.2-2.5mm²
- Solid wire(AWG) : 12-30
- Stranded wire(AWG) : 12-30
- Torque : 3.5 Lb-In / 0.5 N.m
- Screw: M3
- Wire strip length: 6-7mm
- Withstanding Voltage: 1.6KV / 3KV
- Operating temperature: -40°C to +115°C
- Soldering temperature: 260°C±5°C/5 Sec
- Safety Approval: 

DIMENSION

Dim A	N×7.5
Dim B	(N-1)×7.5

N=Number of poles

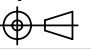
Poles	Tolerance
4p-8p	±0.20
9p-12p	±0.30
13p-16p	±0.40

PART NO.: VJ xx 4 1 x 5 00J0 G

Solid block
No. of poles
04 4 poles
05 5 poles
... ..
16 16 poles

Color
0 Black (RAL9005)
2 Red (RAL3001/D)
3 Orange(RAL2011/P)
4 Yellow(RAL1018/A)
5 Green(RAL6018/T)
6 Blue (RAL5015/A)
8 Grey(RAL7035/D)
9 White(RAL1102)
C Green(RAL6018/U)

RoHS compliant
(lead<4%)
In copper Alloy

mat'l. code				surface ASME Y14.5	tolerance ASME Y14.5	projection 	product family TERMINAL BLOCK
ltr	ecn	no	dr	date	tolerances unless otherwise specified	MM	title
					angles X±0.5		TERMINAL BLOCK
					flat X.X±0.3		RISING CLAMP, 180D WIRE INLET,SOLID BLOCK
					hole X'±1"	scale	dwg no
					dr EVIN ZHONG 040914		sheet 1 of 1 size
					enrg EVIN ZHONG 040914		VJxx41x500J0G A4
					chr HANKE FENG 040914		type
					appd SHI JUN 040914		CUSTOMER Drawing
sheet index	revision	A					
	sheet	1					