



**Part Number :** [22162100](#)

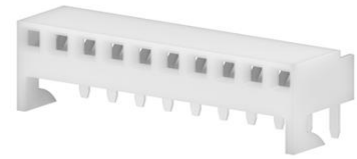
**Product Description :** KK 254 PC Board Connector, Right-Angle, End-to-End Stackable, 0.38µm Gold (Au), 10 Circuits

**Series Number :** 4455

**Status :** Active

**Product Category :** PCB Headers and Receptacles

**Engineering Part Number :** A-4455-AZ10A(208)



---

## Documents and Resources

### Drawings

[022162100 sd.pdf](#)

[PK-44646-001-001.pdf](#)

### 3D Models and Design Files

[STEP AP242](#)

[SOLIDWORKS](#)

[Creo](#)

[Symbol and Footprint \(Multi-Format\)](#)


### Specifications

[PS-10-07-001.pdf](#)

---

## Product Environment Compliance

### Compliance

GADSL/IMDS	Compliant with Exemption 44
China RoHS	 per SJ/T 11365-2006
EU ELV	Not Relevant
Low-Halogen Status	Low-Halogen per IEC 61249-2-21
REACH SVHC	Not Contained per D(2025)6375-DC (05 Nov 2025)
EU RoHS	Compliant per EU 2015/863

[Compliance Statements](#)

- EU RoHS
- REACH SVHC
- Low-Halogen

#### Industry Documents

- IPC 1752A Class C
- IPC 1752A Class D
- Molex Product Compliance Declaration
- IEC-62474
- chemSHERPA (xml)

#### Substances of Interest

- PFAS

#### EU RoHS Certificate of Compliance

#### Additional Product Compliance Information

## Part Details

### General

Status	Active
Category	PCB Headers and Receptacles
Series	4455
Description	KK 254 PC Board Connector, Right-Angle, End-to-End Stackable, 0.38µm Gold (Au), 10 Circuits
Application	Board-to-Board, Signal
Component Type	PCB Receptacle
Product Name	KK 254
UPC	800753589964

### Agency

CSA	LR19980
UL	E29179

### Electrical

Current - Maximum per Contact	2.5A
Grounding to PCB	No
Voltage - Maximum	500V

## Physical

Circuits (Loaded)	10
Circuits (maximum)	10
Color - Resin	Natural (White)
First Mate / Last Break	No
Flammability	94V-0
Glow-Wire Capable	No
Guide to Mating Part	No
Keying to Mating Part	None
Lock to Mating Part	None
Material - Metal	Brass
Material - Plating Mating	Gold
Material - Plating Termination	Tin
Material - Resin	Nylon
Net Weight	1.049/g
Number of Rows	1
Orientation	Right Angle
Packaging Type	Tray
PCB Locator	No
PCB Retention	None
PCB Thickness - Recommended	1.60mm
PC Tail Length	3.35mm
Pitch - Mating Interface	2.54mm
Pitch - Termination Interface	2.54mm
Plating min - Mating	0.381µm
Plating min - Termination	2.540µm
Polarized to PCB	Yes
Temperature Range - Operating	See Product Specification
Termination Interface Style	Through Hole

## Solder Process Data

Max-Duration	5
Lead-Free Process Capability	WAVE
Max-Cycle	1
Max-Temp	235

---

## Mates With / Use With

### Mates with Part(s)

Description	Part Number
KK 254 RPC Vertical Headers with Friction Lock	<u>171856</u>
KK 254 RPC Right-Angle Headers with Friction Lock	<u>171857</u>
KK 254 Single Row Vertical Headers	<u>4030</u>
KK 254 Single Row Right-Angle Headers	<u>4094</u>
KK 254 Vertical Breakaway Headers with Friction Lock	<u>42375</u>
KK 254 Right-Angle Breakaway Headers	<u>42376</u>
KK 254 Right-Angle Surface Mount Compatible Breakaway Headers	<u>42377</u>

---

This document was generated on Dec 12, 2025