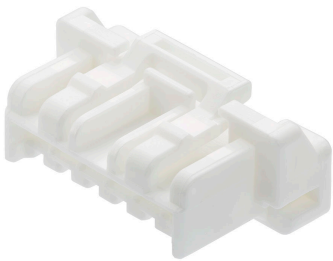




Part Number : [5024390600](#)
Product Description : CLIK-Mate Plug Housing, 2.00mm Pitch, Single Row, Positive Lock, 6 Circuits, White
Series Number : 502439
Status : Active
Product Category : Connector Housings



Documents & Resources

Drawings
[5024390600_sd.pdf](#)

3D Models and Design Files
[5024390600_stp.zip](#)

Specifications
[AS-502439-001-001.pdf](#)
[AS-502439-002-001.pdf](#)
[5024399200-200.pdf](#)
[5024431570-000.pdf](#)

Product Environment Compliance

Compliance

GADSL/IMDS	Not Relevant
China RoHS	
EU ELV	Not Relevant
Low-Halogen Status	Not Low-Halogen per IEC 61249-2-21
REACH SVHC	Not Contained per D(2024)7663-DC (21 Jan 2025)
EU RoHS	Compliant per EU 2015/863

Multiple Part Product Compliance Statements

- Eu RoHS
- REACH SVHC
- Low-Halogen

Multiple Part Industry Compliance Documents

- IPC 1752A Class C
- IPC 1752A Class D
- Molex Product Compliance Declaration
- IEC-62474
- chemSHERPA (xml)

EU RoHS Certificate of Compliance

Part Details

General

Status	Active
Category	Connector Housings
Series	502439
Description	CLIK-Mate Plug Housing, 2.00mm Pitch, Single Row, Positive Lock, 6 Circuits, White
Application	Signal, Wire-to-Board
Comments	See Product Specification for maximum current rating by circuit size and wire AWG
Product Name	CLIK-Mate
UPC	822350915847

Agency

UL	E29179
----	--------

Physical

Breakaway	No
Circuits (maximum)	6
Color - Resin	White
Gender	Plug
Glow-Wire Capable	No
Keying to Mating Part	Yes
Lock to Mating Part	Yes
Material - Resin	PBT
Net Weight	506.000/mg
Number of Rows	1
Packaging Type	Bag

Panel Mount	No
Pitch - Mating Interface	2.00mm
Polarized to Mating Part	Yes
Stackable	No
Temperature Range - Operating	-40° to +105°C

Mates With / Use With

Mates with Part(s)

Description	Part Number
2.00mm Pitch CLIK-Mate Vertical Single Row PCB Receptacles	<u>502443</u>
2.00mm Pitch CLIK-Mate Right-Angle Single Row PCB Receptacles	<u>502494</u>

Use with Part(s)

Description	Part Number
Pre-Crimped Lead CLIK-Mate 2.00mm Male-to-CLIK-Mate 2.00mm Male, Tin (Sn) Plating, 150.00mm Length, 24 AWG, Black	<u>797581014</u>
Pre-Crimped Lead CLIK-Mate 2.00mm Male-to-CLIK-Mate 2.00mm Male, Tin (Sn) Plating, 300.00mm Length, 24 AWG, Black	<u>797581015</u>
2.00mm Pitch CLIK-Mate Male Crimp Terminals	<u>502438</u>

This document was generated on Apr 22, 2025