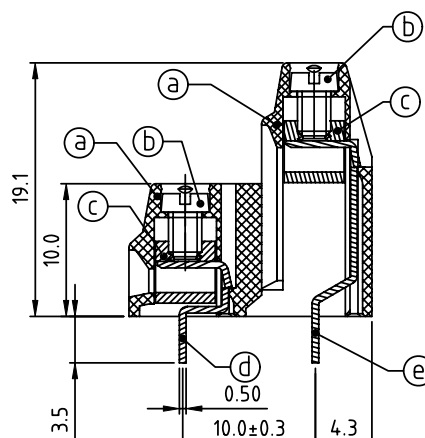
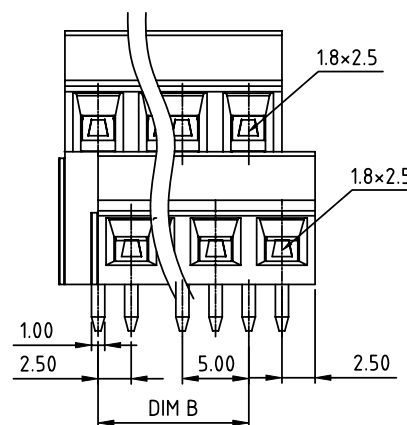
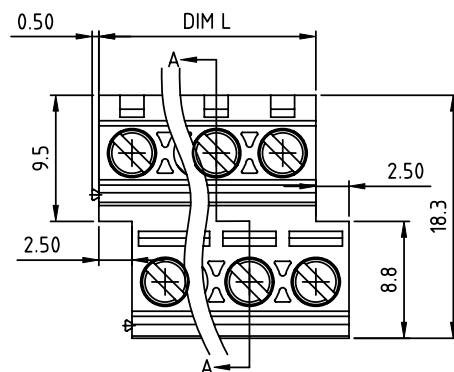


PRODUCT NUMBER	PITCH
YSxx01x000J0G	5.00 mm



SECTION A-A

PART NO.: YS xx 0 1 x 0 00J0 G

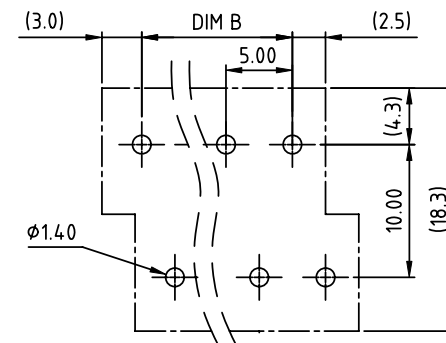
DIMENSION

Dim L	N/2x5.0
Dim B	(N/2-1)x5.0

N=Number of poles

Poles	Tolerance
2x2p~2x6p	±0.15
2x7p~2x12p	±0.25
2x13p~2x18p	±0.35
2x19p~2x24p	±0.45

End stackable	No. of poles	Color	RoHS compliant (lead<4%) In copper Alloy
0	2	Black (RAL9005)	
2	4	Red (RAL3001/D)	
3	6	Orange(RAL2011/P)	
4	8	Yellow(RAL1018/A)	
5	10	Green(RAL6018/T)	
6	12	Blue (RAL5015/A)	
8	16	Grey(RAL7035/D)	
9	20	White(RAL1102)	
C	24	Green(RAL6018/U)	




RECOMMENDED P.C.B LAYOUT
TOP VIEW

Material:

- Item①Terminal housing :Thermoplastic (UL94V-0)
- Item②Terminal screw : Steel Zinc plating "-" slot type
- Item③Clamp : Brass, Ni plated
- Item④Solder pin1 : Brass, Tin plated
- Item⑤Solder pin2 : Brass, Tin plated

Electrical cULus

- Voltage rating: 300V
- Current rating: 10A
- Torque(Lb-In): 3.5
- Screw: M3.0
- Wire range:
- Solid wire(AWG): 16-26
- Stranded wire(AWG): 16-26
- Wire strip length: 6-7mm
- Withstanding Voltage:1.6kv
- Operating temperature: -40°C to +115°C
- Soldering temperature: 260°C±5°C/5 Sec
- Safety Approval: cULus

mat'l. code					surface ASME Y14.5 ✓		tolerance ASME Y14.5		projection 		product family TERMINAL BLOCK					
ltr	ecn	no	dr	date	tolerances unless otherwise specified							title				
					angles 1/2"=1"	X.±0.5				scale		TERMINAL BLOCK				
						X.X±0.3										
						X*.X±0.1										
					dr	EVIN ZHONG	041014			dwg no		sheet 1 of 1		size		
				engr	EVIN ZHONG	041014	YSxx01x000J0G			A						
				chr	HANKE FENG	041014	type			CUSTOMER Drawing						
				appd	SHI JUN	041014										
sheet index	revision sheet	A	1													