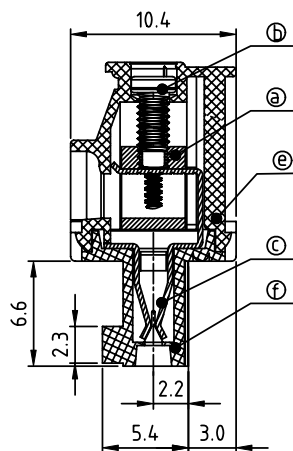
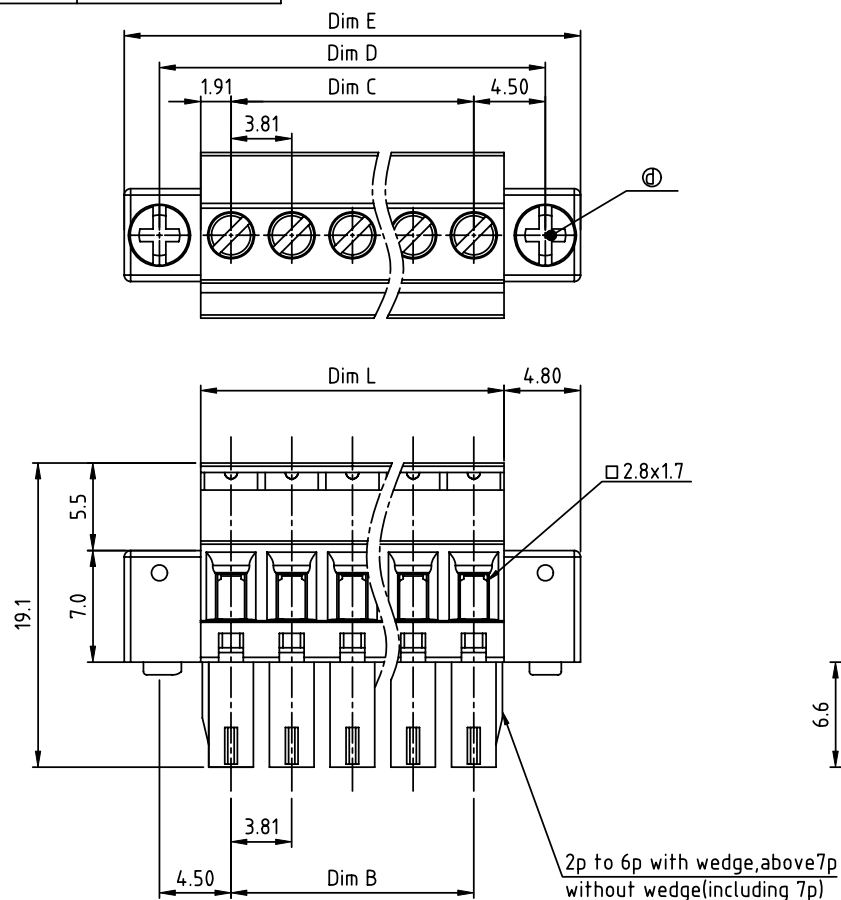


PRODUCT NUMBER

PITCH

TSxx31xC00J0G

3.81 mm



## Material

- Item① Clamp: Brass(CuZn) Ni plated
- Item② Terminal screw: Steel Zinc plating "-" slot type
- Item③ Female contact: PhBz Tin plated
- Item④ With flange screw: Steel Zinc plating M2.5 "+" "-" combination type
- Item⑤ Top body: Thermoplastic (UL94V-0)
- Item⑥ Bottom body: Thermoplastic (UL94V-0)

## Electrical cULus/VDE

- Voltage rating: 300VAC/300VAC
- Current rating: 8A/10A
- Wire range: 1.5mm<sup>2</sup>
- Solid wire(AWG): 16-28
- Stranded wire(AWG): 16-28
- Torque: 1.7Lb-In./0.2Nm
- Screw: M2
- Wire strip length: 6-7mm
- Withstanding Voltage: 1.6KV/2.5KV
- Operating temperature: -40°C to +115°C
- Safety approval: cULus VDE

## DIMENSION

N = Number of poles

Dim L	NX3.81
Dim B	(N-1)X3.81
Dim C	(N-1)X3.81
Dim D	(N-1)X3.81+9.0
Dim E	(N-1)X3.81+13.4

Poles	Tolerance
2p-6p	±0.15
7p-12p	±0.20
13p-16p	±0.25
17p-24p	±0.30

PART NO.: TS xx 31 x C 00J0 G

Solid block	No. of poles	Color	RoHS compliant (lead<4%) In copper Alloy
02	2 poles	Black (RAL9005)	
03	3 poles	Red (RAL3001/D)	
...	...	Orange(RAL2011/P)	
24	24 poles	Yellow(RAL1018/A)	
...	...	Green(RAL6018/T)	
...	...	Blue (RAL5015/A)	
...	...	Grey(RAL7035/D)	
...	...	White(RAL1102)	
...	...	Green(RAL6018/U)	

mat'l. code				surface	tolerance	projection	product family			
ltr	ecn	no	dr	date	ASME Y14.5	ASME Y14.5	TERMINAL BLOCK			
					tolerances unless otherwise specified					
					angles	X.±0.5				
					±0.1	X.X±0.3				
					X'±1"	X.XX±0.1				
					dr	EVIN ZHONG 041914				
					enr	EVIN ZHONG 041914				
					chr	HANKE FENG 041914				
					appd	SHI JUN 041914				
sheet index				revision	A					
				sheet	1					