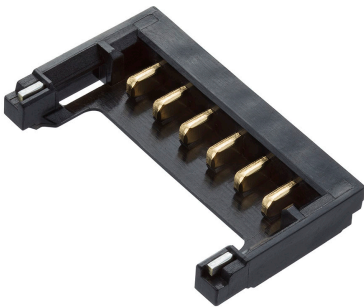




Part Number : [2121340005](#)
Product Description : Pico-EZmate Plus PCB Header, 1.00mm Pitch, Single Row, Gold (Au) Plating, 5 Circuits
Series Number : 212134
Status : Active
Product Category : PCB Headers and Receptacles



Documents & Resources


Drawings
[2121340005_sd.pdf](#)

3D Models and Design Files
[2121340005.dxf](#)
[2121340005.pdf](#)
[2121340005_stp.zip](#)

Specifications
[2121349200-SPK-200.pdf](#)
[2121320000-PS-000.pdf](#)
[2121321000-PS-000.pdf](#)

Product Environment Compliance

Compliance

GADSL/IMDS	Compliant with Exemption 44; 33
China RoHS	
EU ELV	Not Relevant
Low-Halogen Status	Low-Halogen per IEC 61249-2-21
REACH SVHC	Not Contained per D(2024)6225-DC (07 Nov 2024)
EU RoHS	Compliant per EU 2015/863

Multiple Part Product Compliance Statements
- Eu RoHS
- REACH SVHC
- Low-Halogen

Multiple Part Industry Compliance Documents

- IPC 1752A Class C
- IPC 1752A Class D
- Molex Product Compliance Declaration
- IEC-62474
- chemSHERPA (xml)

EU RoHS Certificate of Compliance

Part Details

General

Status	Active
Category	PCB Headers and Receptacles
Series	212134
Description	Pico-EZmate Plus PCB Header, 1.00mm Pitch, Single Row, Gold (Au) Plating, 5 Circuits
Application	Signal, Wire-to-Board
Component Type	PCB Header
Product Name	Pico-EZmate Plus
UPC	193264124701

Electrical

Current - Maximum per Contact	2.8A
Voltage - Maximum	50V AC (RMS)/DC

Physical

Breakaway	No
Circuits (Loaded)	5
Circuits (maximum)	5
Color - Resin	Black
Glow-Wire Capable	No
Guide to Mating Part	No
Keying to Mating Part	None
Lock to Mating Part	Yes
Material - Metal	Copper Alloy
Material - Plating Mating	Gold

Material - Resin	Polyamide
Net Weight	32.180/mg
Number of Rows	1
Orientation	Vertical
Packaging Type	Embossed Tape on Reel
PCB Locator	No
PCB Retention	Yes
Pitch - Mating Interface	1.00mm
Plating min - Mating	0.100µm
Polarized to Mating Part	Yes
Polarized to PCB	Yes
Temperature Range - Operating	-40° to +105°C
Termination Interface Style	Surface Mount

Mates With / Use With

Mates with Part(s)

Description	Part Number
Pico-EZmate Plus Single Row Receptacle Housings	<u>212132</u>

This document was generated on Mar 09, 2025