



# SUP-PH-E1PR / -R SERIES

## NOISE FILTERS



### Features

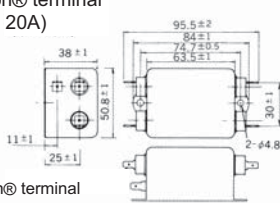
- Low range high attenuation effects by super high  $\mu$  material (20~30dB at 10,000Hz). Excellent pulse absorption (more than 25dB attenuation with 1,500V pulse).
- Two types of leakage current
  - less than 70 $\mu$ A
  - less than 10 $\mu$ A (applies to medical equipment)
- Three terminal styles (Faston®, solder and screw).
- Bleeder resistor for electric shock protection.

### Applications

- Information processing devices (for Europe), Medical equipments, Office appliances and Various control systems.

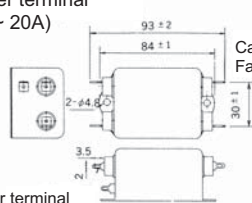
### Dimensions

Faston® terminal  
(5A ~ 20A)



Faston® terminal  
(#250)

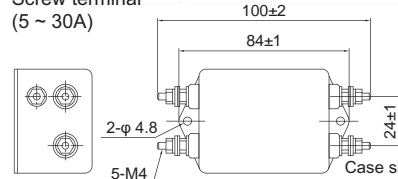
Solder terminal  
(5A ~ 20A)



Solder terminal

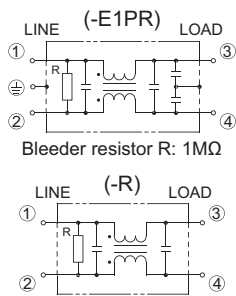
Case size is the same as Faston® terminal type

Screw terminal  
(5 ~ 30A)

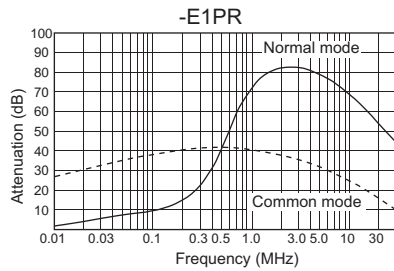


Case size is the same as Faston® terminal type

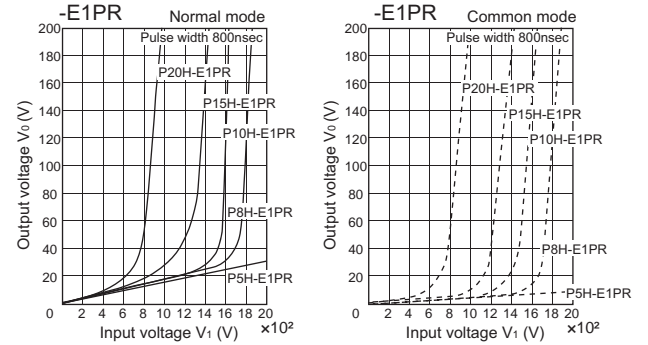
### Circuit



### Static characteristics (Representative example)



### TVSS characteristics



Unit: mm

### Electrical Specifications

Rated Voltage **250Vac**

Safety Standard	Model Number	Rated Current (A)	Test Voltage	Insulation Resistance	Leakage Current max.	Voltage Drop max.	Temperature Rise max.	Operating Temperature (°C)	Insertion losses		Weight typ.(g)	
									Normal Mode (MHz)	Common Mode (MHz)		
RU	SUP-P5H-E1PR( $\frac{5}{3}$ )	5	Line to Line 1,000Vac 50/60Hz 60sec	Line to Case 6,000M $\Omega$ min (at 500Vdc)	70 $\mu$ A (at 250Vac 60Hz)	1.0Vac	35K	-25~ +50 (85°C with Temp. rise)	0.5 ~ 20	0.05 ~ 20	275	
	SUP-P8H-E1PR( $\frac{8}{3}$ )	8							0.6 ~ 30	0.09 ~ 30		
	SUP-P10H-E1PR( $\frac{10}{3}$ )	10							0.7 ~ 30	0.1 ~ 30		
	SUP-P15H-E1PR( $\frac{15}{3}$ )	15							1.5 ~ 30	3.0 ~ 30		
SF	SUP-P20H-E1PR( $\frac{20}{3}$ )	20			10 $\mu$ A (at 250Vac 60Hz)				-	3.0 ~ 30		4.0 ~ 30
	*SUP-P30H-E1PR-4	30								0.5 ~ 20		-
	SUP-P5H-R( $\frac{5}{3}$ )	5								0.6 ~ 30		-
	SUP-P8H-R( $\frac{8}{3}$ )	8								0.7 ~ 30		-
S	SUP-P10H-R( $\frac{10}{3}$ )	10			-				-	1.0 ~ 30		-
	SUP-P15H-R( $\frac{15}{3}$ )	15								1.5 ~ 30		-
	SUP-P20H-R( $\frac{20}{3}$ )	20	3.0 ~ 30	-								
E14	*SUP-P30H-R-4	30	-	-	0.5 ~ 20	-						
					0.6 ~ 30	-						

Guaranteed attenuation is more than 40dB in normal mode and more than 35dB in common mode for SUP-PH-E1PR series.  
(more than 25dB at 15A and more than 20dB at 20A, 30A)

\*only screw terminal type