



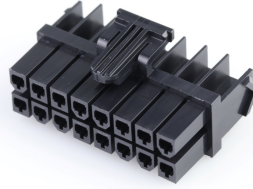
Part Number : [1727080116](#)

Product Description : Mini-Fit TPA2 Receptacle Housing, 4.20mm Pitch, Dual Row, UL 94V-2, Glow-Wire Capable, 16 Circuit

Series Number : 172708

Status : Active

Product Category : Connector Housings



Documents & Resources

Drawings

[Drawing 1727080116_sd.pdf](#)

[Packaging Design Drawing 1727080001-PK-000.pdf](#)

3D Models and Design Files

[3D Model 1727080116_stp.zip](#)

Specifications

[Application Specification AS-172718-0000-001.pdf](#)

[Product Specification 2029880001-PS-000.pdf](#)

[Test Summary 2029880001-TS-000.pdf](#)

Product Environment Compliance

Compliance

GADSL/IMDS	Not Relevant
China RoHS	
EU ELV	Not Relevant
Low-Halogen Status	Not Low-Halogen per IEC 61249-2-21
REACH SVHC	Not Contained per D(2024)4144-DC (27 June 2024)
EU RoHS	Compliant per EU 2015/863

[Multiple Part Product Compliance Statements](#)

- Eu RoHS
- REACH SVHC
- Low-Halogen

[Multiple Part Industry Compliance Documents](#)

- IPC 1752A Class C
- IPC 1752A Class D
- Molex Product Compliance Declaration
- IEC-62474
- chemSHERPA (xml)

EU RoHS Certificate of Compliance

Part Details

General

Status	Active
Category	Connector Housings
Series	172708
Description	Mini-Fit TPA2 Receptacle Housing, 4.20mm Pitch, Dual Row, UL 94V-2, Glow-Wire Capable, 16 Circuit
Application	Power, Wire-to-Board, Wire-to-Wire
Comments	See product specification for current derating information.
Product Family	Mini-Fit Family Power Connectors
Product Name	Mini-Fit TPA2
UPC	191128361446

Agency

UL	E29179
----	--------

Physical

Circuits (maximum)	16
Color - Resin	Black
Flammability	94V-0
Gender	Receptacle
Glow-Wire Capable	Yes
Lock to Mating Part	Yes
Material - Resin	Nylon
Net Weight	3.145/g
Number of Rows	2
Packaging Type	Bag

Panel Mount	No
Pitch - Mating Interface	4.20mm
Pitch - Termination Interface	4.20mm
Polarized to Mating Part	Yes
Stackable	No
Temperature Range - Operating	-40° to +105°C

Mates With / Use With

Mates with Part(s)

Description	Part Number
Mini-Fit TPA2 and Mini-Fit Sigma Dual Row Plug Housings	<u>172762</u>
Mini-Fit TPA2 and Mini-Fit Sigma Dual Row Plug Housings	<u>172767</u>
Mini-Fit Jr. Plug Housings	<u>5559</u>
Mini-Fit Vertical Dual Row Headers	<u>172447</u>
Mini-Fit Jr. Right-Angle Dual Row Headers	<u>172448</u>
Mini-Fit 4.20mm Pitch Dual Row Right-Angle Headers	<u>35317</u>
Mini-Fit 4.20mm Pitch Dual Row Right-Angle Headers	<u>35318</u>
Mini-Fit Jr. Vertical Dual Row Headers	<u>43460</u>
Mini-Fit Jr. Right-Angle Dual Row Headers	<u>44130</u>
Mini-Fit Jr. Vertical, Dual Row, Reflow Solder Capable Headers	<u>46207</u>
Mini-Fit Jr. Right-Angle Dual Row Reflow Solder Capable Headers	<u>46991</u>
Mini-Fit Jr. Vertical Headers	<u>5566</u>
Mini-Fit Jr. Right-Angle Headers	<u>5569</u>
Mini-Fit Jr. Dual Row Headers	<u>87427</u>
Mini-Fit Jr. Dual Row Test Plugs	<u>44281</u>

Use with Part(s)

Description	Part Number
Mini-Fit TPA2/Sigma Female Crimp Terminals	<u>172718</u>
Mini-Fit TPA2/Sigma Female Crimp Terminals	<u>202988</u>
Pre-Crimped Lead Mini-Fit Sigma Female-to-Mini-Fit Sigma Female	<u>219670</u>
Pre-Crimped Lead Mini-Fit Sigma Female-to-Pigtail	<u>219671</u>
Mini-Fit TPA2 and Mini-Fit Sigma Terminal Position Assurance (TPA) Retainers	<u>172709</u>
Mini-Fit TPA2 Connector Position Assurance (CPA) Retainers	<u>203603</u>
Mini-Fit TPA2/Sigma Female Low Mating Force Crimp Terminals	<u>221442</u>

This document was generated on Oct 01, 2024