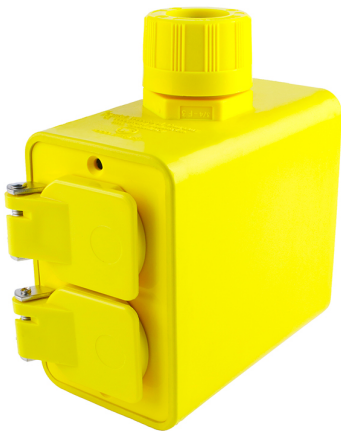




Part Number : [1301370192](#)
Product Description : Super-Safeway Multiple Outlet Box, Extended Depth, 2-Sided, F3 (3/4") Cord Grip Body, with Flip Lids for (2), NEMA 5-20 Duplex Receptacles
Series Number : 130137
Status : Active
Product Category : Power Distribution
Engineering Number : 3085-10



Product Environment Compliance

Compliance

GADSL/IMDS	Not Relevant
China RoHS	Not Reviewed per SJ/T 11365-2006
EU ELV	Not Relevant
Low-Halogen Status	Not Reviewed per IEC 61249-2-21
REACH SVHC	Not Reviewed per D(2024)7663-DC (21 Jan 2025)
EU RoHS	Not Reviewed per EU 2015/863

Multiple Part Product Compliance Statements

- Eu RoHS
- REACH SVHC
- Low-Halogen

Multiple Part Industry Compliance Documents

- IPC 1752A Class C
- IPC 1752A Class D
- Molex Product Compliance Declaration
- IEC-62474
- chemSHERPA (xml)

EU RoHS Certificate of Compliance

Part Details

General

Status	Active
Category	Power Distribution
Series	130137
Description	Super-Safeway Multiple Outlet Box, Extended Depth, 2-Sided, F3 (3/4") Cord Grip Body, with Flip Lids for (2), NEMA 5-20 Duplex Receptacles
Enclosure Rating	N/A
NEMA Configuration	NEMA 5-20
Product Name	Super-Safeway
Type	Multiple Outlet Box
UPC	78678875037

Agency

CSA	LR6837
UL	E46237

Electrical

Current - Maximum per Contact	N/A
GFCI	No
GFCI Reset	N/A
Ground Continuity Monitor	No
Open Neutral Relay	N/A
Voltage - Maximum	250V

Physical

Cord Diameter	11.10-19.05mm (.437-.750")
Cord Grip Body Size	F3 3/4"
Cord Length	N/A
Cord Type	N/A
Feed-Thru	No
Flip Lid	Yes
Material - Housing	Rubber
Mounting Style	Portable
Net Weight	820.547/g

Number of Receptacles	2
Packaging Type	Carton
Receptacle Type	Duplex

This document was generated on Apr 27, 2025