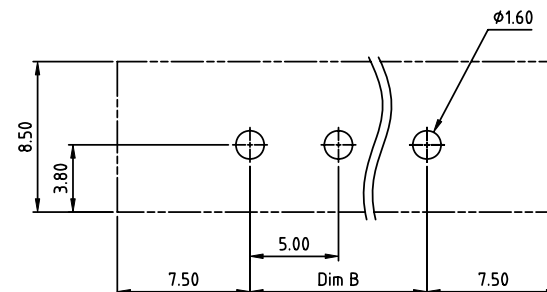
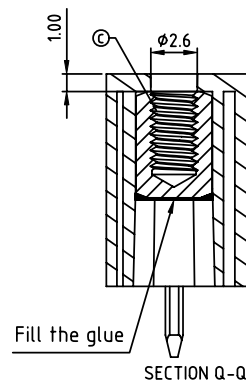
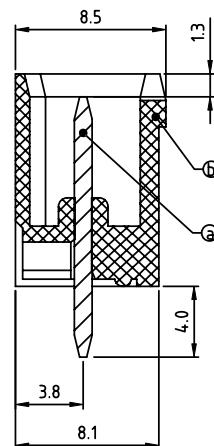
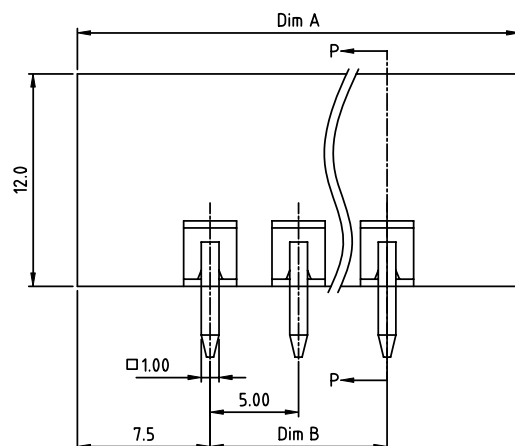
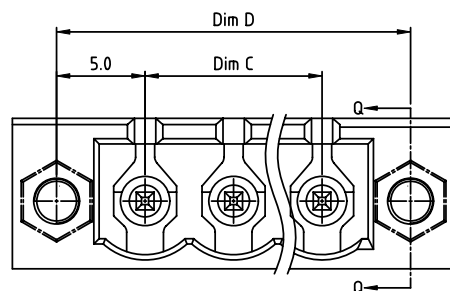


PRODUCT NUMBER

PITCH

0Qxx75x000J0G




5.00 mm


 RECOMMENDED P.C.B LAYOUT
 TOP VIEW

Material:

- Item ③ Contact pin: Copper Tin plated
- Item ④ Terminal housing: Thermoplastic (UL94V-0)
- Item ⑤ Flange nut: Brass M2.5

Electrical: cULus /VDE /TUV

- Voltage rating: 300V/300V/300V
- Current rating: 20A/20A/20A
- Withstanding Voltage: 1.6 KV/2.5KV/2.5KV
- Operating temperature: -40°C to +115°C
- Soldering temperature: 260°C±5°C/5 Sec
- Safety Approval:   

DIMENSION

Dim A	(N+2)×5.0
Dim B&C	(N-1)×5.0
Dim D	(N+1)×5.0

N= NUMBER OF POLES

Poles	Tolerance
2P-6P	±0.15
7P-12P	±0.20
13P-18P	±0.25
19P-24P	±0.30

PART NO.: 0Q xx 7 5 x 0 00J0 G

 No. of poles
 02 2 poles
 03 3 poles
 ...
 24 24 poles

 Body Color
 0 Black (RAL9005)
 2 Red (RAL3001/D)
 3 Orange(RAL2011/P)
 4 Yellow(RAL1018/A)
 5 Green(RAL6018/T)
 6 Blue (RAL5015/A)
 8 Grey(RAL7035/D)
 9 White(RAL1102)
 C Green(RAL6018/U)

 RoHS compliant
 (lead<4%)
 In copper Alloy

mat'l. code				surface	tolerance	projection	product family	
ltr	ecn	no	dr	date	ASME Y14.5✓	ASME Y14.5	TERMINAL BLOCK	
					tolerances unless otherwise specified		title	
					angles	X.±0.5	TERMINAL BLOCK	
					fillet	X.X±0.3	PLUGGABLE SOCKET, WITH FLANGE, VERTICAL	
					X*±1°	X.XX±0.1	scale	
					dr	HANKE FENG 032814	dwg no	
					enr	HANKE FENG 032814	sheet 1 of 1 size	
					chr	SHI JUN 032814	0Qxx75x000J0G	
					appd	SHI JUN 032814	A4	
sheet index				revision	A		type	
				sheet	1		CUSTOMER Drawing	