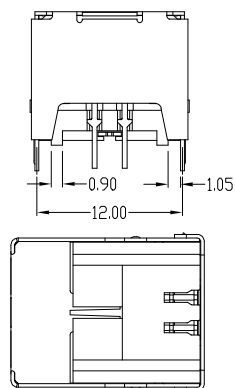
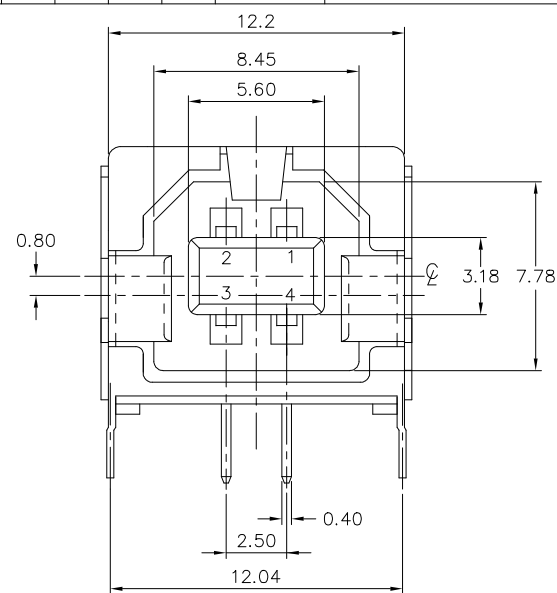
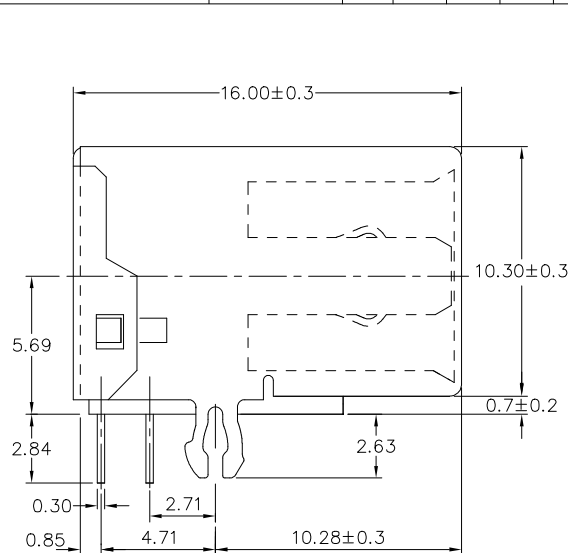
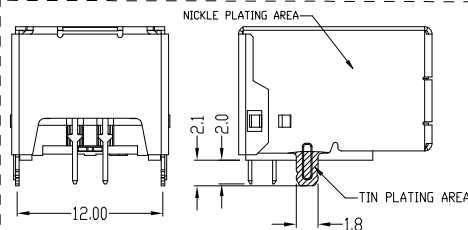


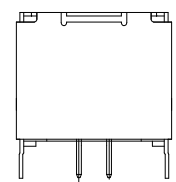
PRODUCT NO.
61729-*



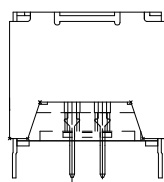
TYPE"4" PARTIAL BACK WITH SHORT SOLDER TAIL, SHELL TAIL AND SPECIAL HOUSING FOR PIP PROCESS 61729-XXWXLf



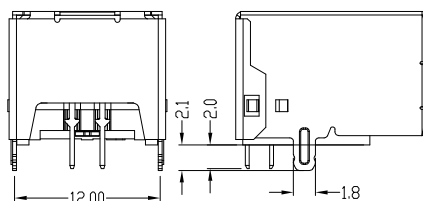
TYPE"5" PARTIAL BACK WITH SHORT SOLDER TAIL, SHORT SHELL TAIL AND SELECTED MATTE TIN SHELL FOR PIP PROCESS 61729-XXTXLf



TYPE"1" FULL BACK



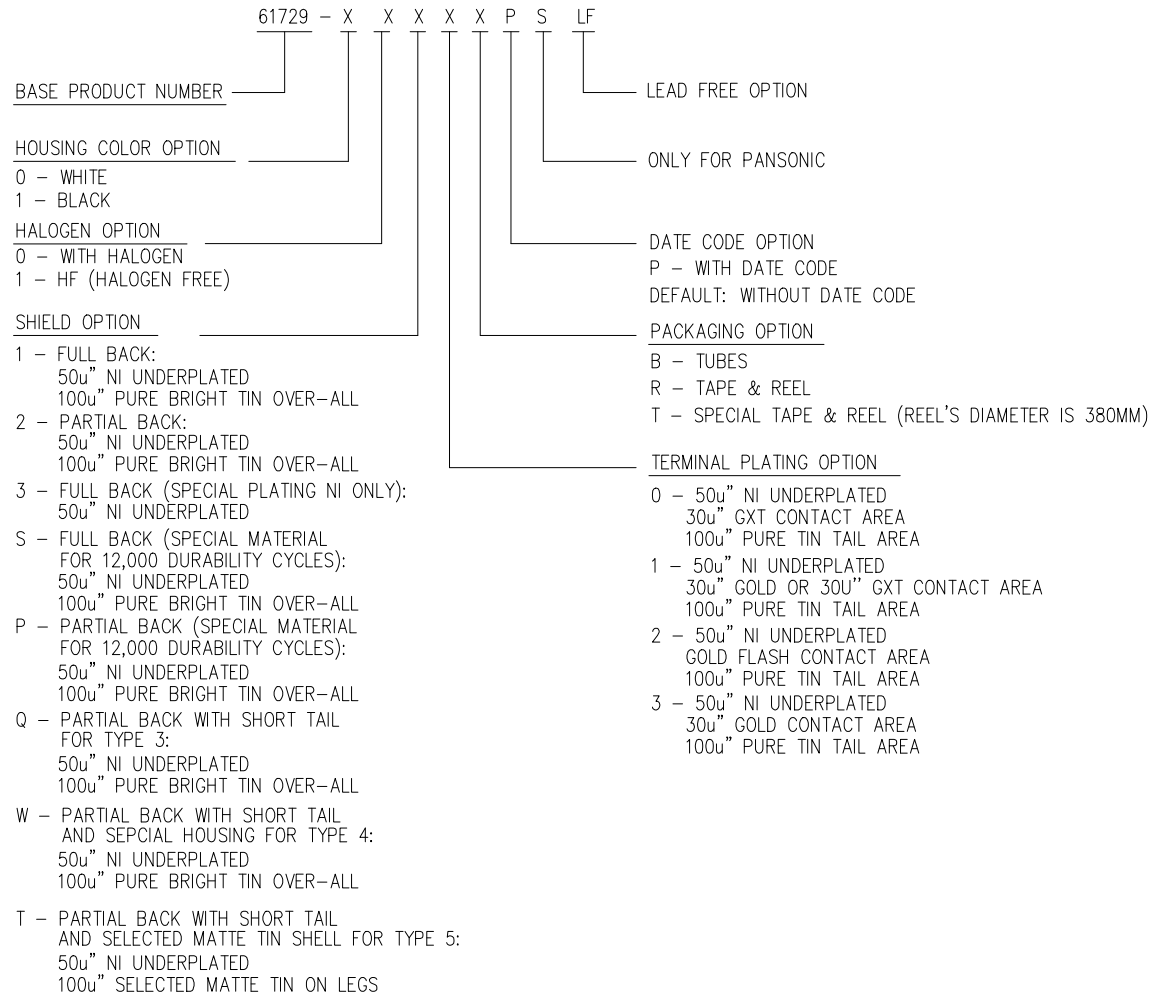
TYPE"2" PARTIAL BACK



TYPE"3" PARTIAL BACK WITH SHORT SOLDER TAIL AND SHELL TAIL FOR PIP PROCESS 61729-XXQXLf

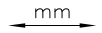

mat'l. code				surface		tolerance		projection		product family			
				ISO 1302 ✓		ISO 406 ISO 1101				HPL 511 USB2.0			
ltr	ecn no	dr	date	tolerances unless otherwise specified		0.0±0.30				title			
AA	ELX-N-34768-1	YY	09/19/19	angles		0.00±0.20				USB RECEPTACLE B TYPE			
AB	ELX-N-37746-1	YY	07/21/20	linear		0.00±0.20							
				0°±2'		0.000±0.10		scale 1:1					
V	N08-0246	RB	12/08/08	dr	Yuan-Yuan Bao	07/21/20		Amphenol FCI		dwg no		sheet 1 of 3	size
W	ECR-N-16533	LQ	12/17/13	engr	Yuan-Yuan Bao	07/21/20				61729		A3	
X	ELX-N-29556	LZ	03/09/18	chr	Li-Qing Lei	07/21/20							
Y	ELX-N-32780	YY	02/26/19	appd	Tim.Yao	07/21/20							
sheet index		revision sheet								type Product Customer Drawing			

PRODUCT NUMBER CODE:



Amphenol
FCI

© 2016 APCI

mat'l. code				surface ISO 1302 ✓	tolerance ISO 406 ISO 1101	projection 1101	product family HPL 511 USB2.0			
ltr	ecn no	dr	date	tolerances unless otherwise specified			title USB RECEPTACLE B TYPE			
AB				angles	linear					
				0°±2'	0.0±0.30 0.00±0.20 0.000±0.10					
				dr	Yuan-Yuan Bao	07/21/20				
				eng	Yuan-Yuan Bao	07/21/20				
				chr	Li-Qing Lei	07/21/20				
				appd	Tim.Yao	07/21/20				
sheet index	revision sheet						dwg no			
							sheet 3 of 3			
							61729			
							type Product Customer Drawing			