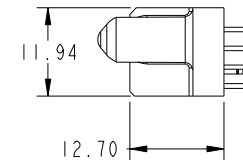
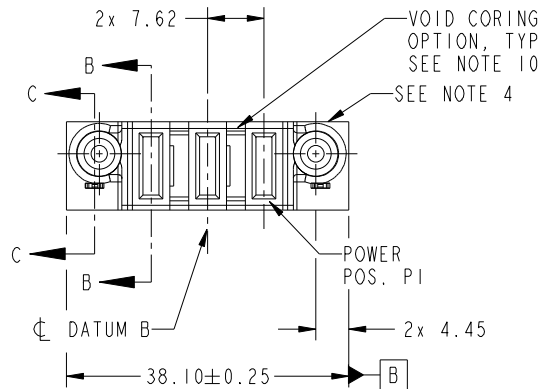
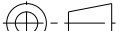






Copyright FCI.

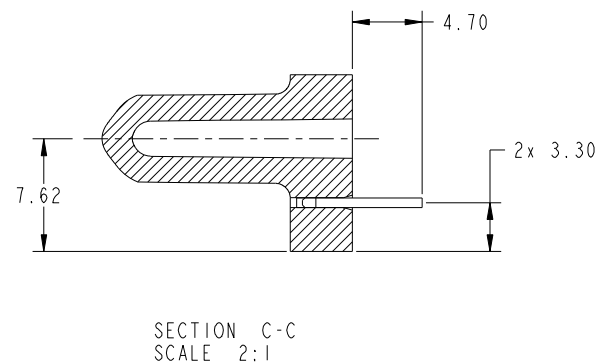
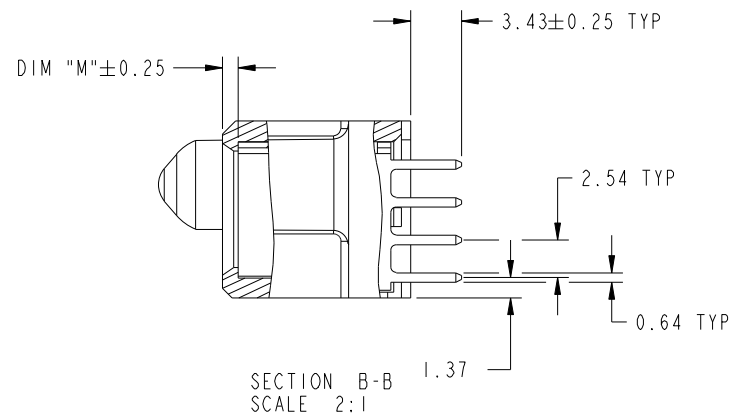
| PRODUCT NO.            | POWER |    |    |    |    |
|------------------------|-------|----|----|----|----|
|                        | E2    | P3 | P2 | P1 | E1 |
| 51940-467--<br>NOTE: 3 |       | PA | PA | PA |    |

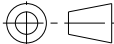




|               |         |       |  |       |  |   |       |                        |  |   |   |                        |           |              |          |  |  |
|---------------|---------|-------|--|-------|--|---|-------|------------------------|--|---|---|------------------------|-----------|--------------|----------|--|--|
| spec ref *    |         |       |  | dr    |  | Weller Luo  |       | 2012-11-19             |  | projection<br> | MM<br> | size<br>A4             |           | scale<br>1:1 |          |  |  |
| tolerance std |         |       |  | eng   |  | Weller Luo  |       | 2012-12-14             |  |   |   | ecn no *               |           |              |          |  |  |
| SEE NOTE      |         |       |  | chr   |  | -   |       | -                      |  |   |   | rel level Released     |           |              |          |  |  |
|               |         |       |  | appr  |  | PM ZHENG  |       | 2012-12-14             |  | product family  |   | PwrBlade               |           |              |          |  |  |
| surface ✓     | linear  | 0.X   |  | ±0.5  |  |  | title | 3ACP                   |  |   |   | dwg no                 | 51940-467 |              | rev<br>A |  |  |
|               |         | 0.XX  |  | ±0.25 |  |   |       | VERTICAL SOLDER RECEPT |  |   |   |                        |           |              |          |  |  |
|               |         | 0.XXX |  | ±0.1  |  |   |       |                        |  |   |   |                        |           |              |          |  |  |
|               | angular | 0°    |  | ±2°   |  | www.fci.com   |       | cat. no.               |  | *   |   | Product - Customer Drw |           | sheet 1 of 4 |          |  |  |

PRODUCT NUMBER

51940-467--  
NOTE: 3



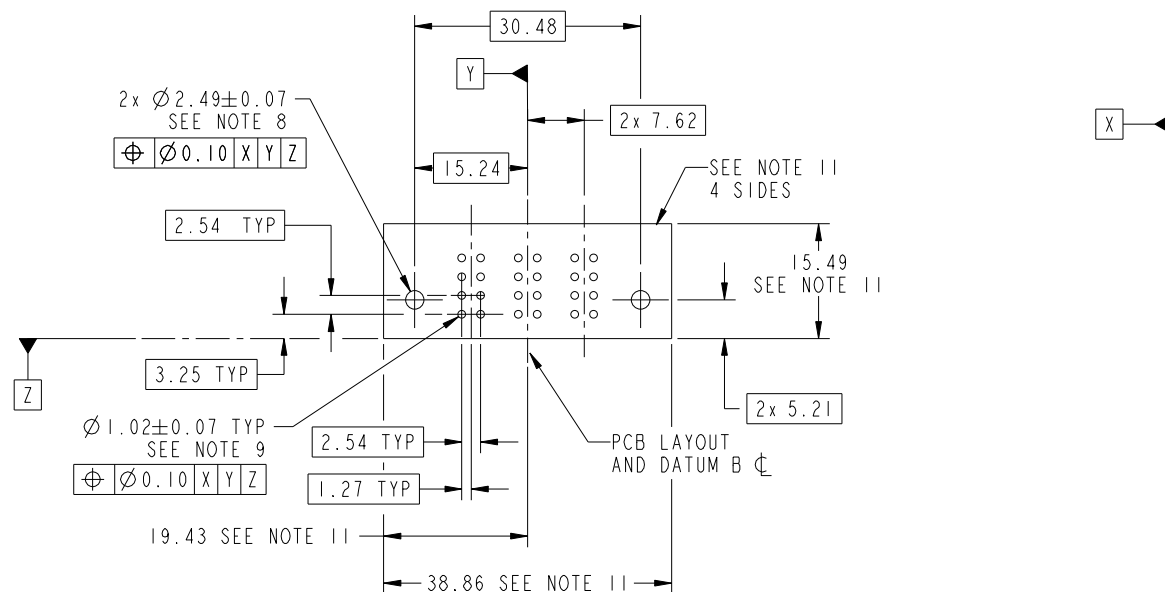
|  |            |            |  |  |           |              |       |        |           |     |   |  |
|--|------------|------------|--|--|-----------|--------------|-------|--------|-----------|-----|---|--|
| dr   | Weller Luo | 2012-11-19 | <div>projection</div> <div></div> | <div>MM</div> <div></div> | size      | A4           | scale | 1:1    |           |     |   |  |
| eng  | Weller Luo | 2012-12-14 |  |  | ecn no    | *            |       |        |           |     |   |  |
| chr  | -          | -          |  |  | rel level | Released     |       |        |           |     |   |  |
| appr   | PM ZHENG   | 2012-12-14 | product family   |  | PwrBlade  |              |       |        |           |     |   |  |
| <div></div> |            | title      |  |  | 3ACP      |              |       | dwg no | 51940-467 | rev | A |  |
| VERTICAL SOLDER RECEPT   |            |            |  |  |           |              |       |        |           |     |   |  |
| www.fci.com  |            | cat. no.   |  | Product - Customer Drw   |           | sheet 2 of 4 |       |        |           |     |   |  |

Print File - REV C - 2009-06-09

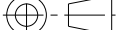




Copyright FCI.

51940-467--  
NOTE: 3



## RECOMMENDED PCB LAYOUT

|   |            |   |   |   |           |              |
|---|------------|---|---|---|-----------|--------------|
| dr  | Weller Luo | 2012-11-19                              | projection<br> | MM<br> | size      | scale        |
| eng   | Weller Luo | 2012-12-14                              |   |   | A4        | 1:1          |
| chr   | -          | -                                       |   |   | ecn no    | *            |
| appr  | PM ZHENG   | 2012-12-14                              | product family  | PwrBlade  | rel level | Released     |
|  |            | title<br>3ACP<br>VERTICAL SOLDER RECEPT | dwg no<br>51940-467   |   |           | rev<br>A     |
| www.fci.com   | cat. no.   |   | Product - Customer Drw  |   |           | sheet 3 of 4 |



Copyright FCI.

PRODUCT NUMBER

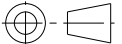


51940-467\_\_  
NOTE: 3

NOTES:

1. DIMENSIONS AND TOLERANCES ARE IN ACCORDANCE WITH  
ASME Y14.5M, 1994 UNLESS OTHERWISE SPECIFIED.

CONNECTOR NOTES:

- ② HOUSING MATERIAL: UL 94 V-0 GLASS FILLED HIGH-TEMP THERMOPLASTIC  
POWER CONTACT MATERIAL: COPPER ALLOY  
SIGNAL PIN MATERIAL: COPPER ALLOY
3. SEE ITEM 5 & 6 IN PRINT 10064183 FOR PLATING SPEC OF 51940-467 AND 51940-467LF RESPECTIVELY.
- ④ MANUFACTURER'S NAME, DATE CODE AND OPTIONAL P/N TO APPEAR ON  
THIS SURFACE. THE MARK CAN BE OMITTED IF THERE IS NOT ENOUGH  
SPACE ON THIS SURFACE.
5. PRODUCT SPECIFICATION GS-12-149.  
APPLICATION SPECIFICATION BUS-20-067.
6. PACKAGED IN TRAYS.
- PCB NOTES:
7. ALL HOLE DIAMETERS ARE FINISHED HOLE SIZE.
- ⑧ MOUNTING HOLES, WHERE APPLICABLE, ARE UNPLATED.
- ⑨  $\varnothing 1.151 \pm 0.025$  DRILLED HOLES PLATED WITH  
0.008 MIN SnPb OR Sn OVER 0.03  
TO 0.08 Cu PLATING TO ACHIEVE  
 $\varnothing 1.02 \pm 0.07$  HOLE.
10. THE VOID CORING IN BETWEEN POWER MODULES, SIGNAL MODULES AND END MODULES ARE  
OPTIONAL AND THE SHAPE MAY BE DIFFERENT FOR OPTIMIZE THE MOLDING PROCESS. THE VOID  
CORING WILL NOT EFFECT TO PRODUCT FUNCTION.
- ⑪ CONNECTOR KEEP-OUT ZONE.

|   |            |            |   |   |                        |    |       |              |          |           |     |   |
|---|------------|------------|---|---|------------------------|----|-------|--------------|----------|-----------|-----|---|
| dr  | Weller Luo | 2012-11-19 | <div>projection</div>  | <div>MM</div>  | size                   | A4 | scale | 1:1          |          |           |     |   |
| eng   | Weller Luo | 2012-12-14 |   |   | ecn no                 |    |       |              | *        |           |     |   |
| chr   | -          | -          |   |   | rel level              |    |       |              | Released |           |     |   |
| appr  | PM ZHENG   | 2012-12-14 | product family  |   | PwrBlade               |    |       |              |          |           |     |   |
|  |            | title      |   |   | 3ACP                   |    |       | dwg no       |          | 51940-467 | rev | A |
| VERTICAL SOLDER RECEPT  |            |            |   |   |                        |    |       |              |          |           |     |   |
| www.fci.com   |            | cat. no.   |   |   | Product - Customer Drw |    |       | sheet 4 of 4 |          |           |     |   |

Print File - REV C - 2009-06-09