


SEARCH KEYWORD, PART NUMBER 




Part Number: 15466335

Product Name: [Generic Connectors](#)

12 Way F M/P 480 Unsealed

 [Share](#)  [Print](#) [Contact Us About This Item](#)

GET SAMPLES 

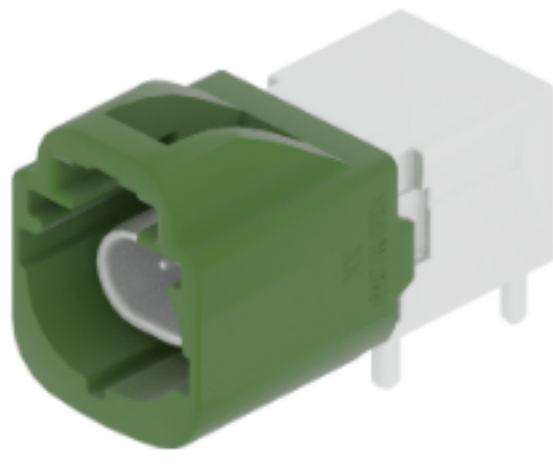


ATTRIBUTES DOCUMENTS ECAD COMPATIBLE PARTS

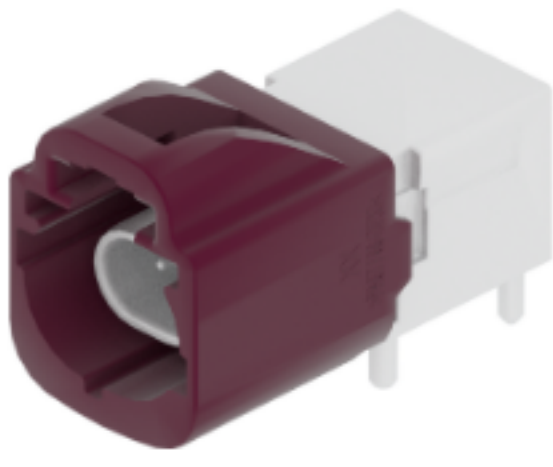
Attributes

Product Family Generic Connectors	Color BLACK
No. of Ways 12	Primary Locking Mechanism CAVITY LOCK
Cable Exit Orientation 180°	Weight (g) 9.2739
Gender Female	Terminal 1 Size 4.8
Length (mm) 35.8	Sealing Unsealed
Width (mm) 45	Primary Material PA 66
Height (mm) 20	

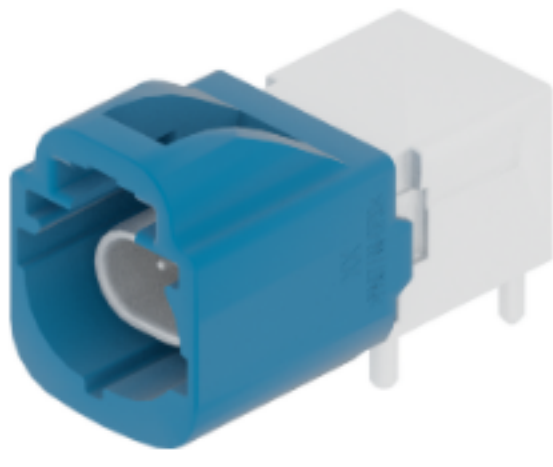
Other Products



**35829171**  
2 Way Male 0.5 Unsealed Green



**35829170**  
2 Way Male 0.5 Unsealed Violet

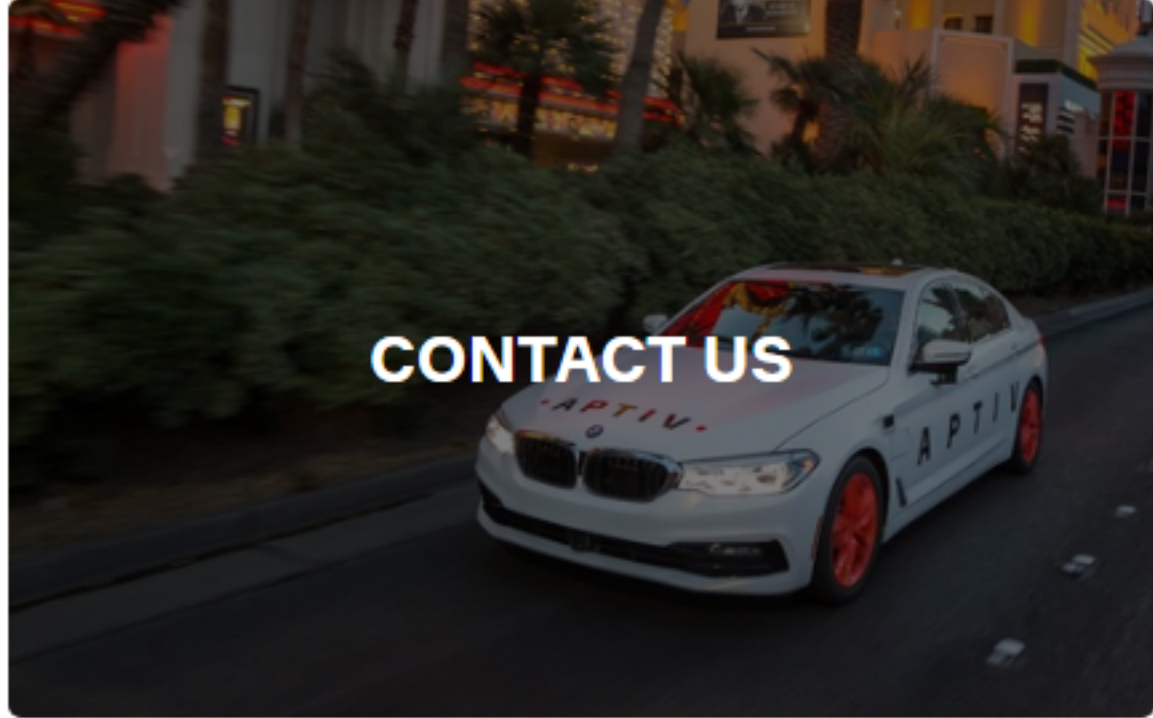


**35829169**  
2 Way Male 0.5 Unsealed Blue

RESOURCE-CENTER-ITEM  
COV CONN CLIP CDT BLACK



Next Steps



Keep pace with where mobility is going.

See what's next and get the latest updates.

SIGN UP TO GET UPDATES



Don't worry. We won't flood your inbox or share your email.

INSIGHTS

EXPLORE ALL ARTICLES  
CASE STUDIES  
MOBILITY INSIDER  
RESEARCH PUBLICATIONS  
WHITE PAPERS

SOLUTIONS

Advanced Safety  
Connected Services  
Connection Systems  
Connectivity and Security  
Electrical Distribution Systems  
Middleware & DevOps  
Smart Vehicle Architecture  
User Experience  
Vehicle Electrification Systems  
HellermannTyton  
Intercable Automotive Solutions  
Motional  
Winchester Interconnect  
Wind River

CATALOG

ABOUT

Our Mission  
Our Businesses  
Our Locations  
Our Foundation  
Sustainability  
Suppliers

PRIVACY

Terms of Use  
Cookie Policy

LEGAL & COMPLIANCE

CAREERS

INVESTORS  
NEWSROOM  
CONTACT