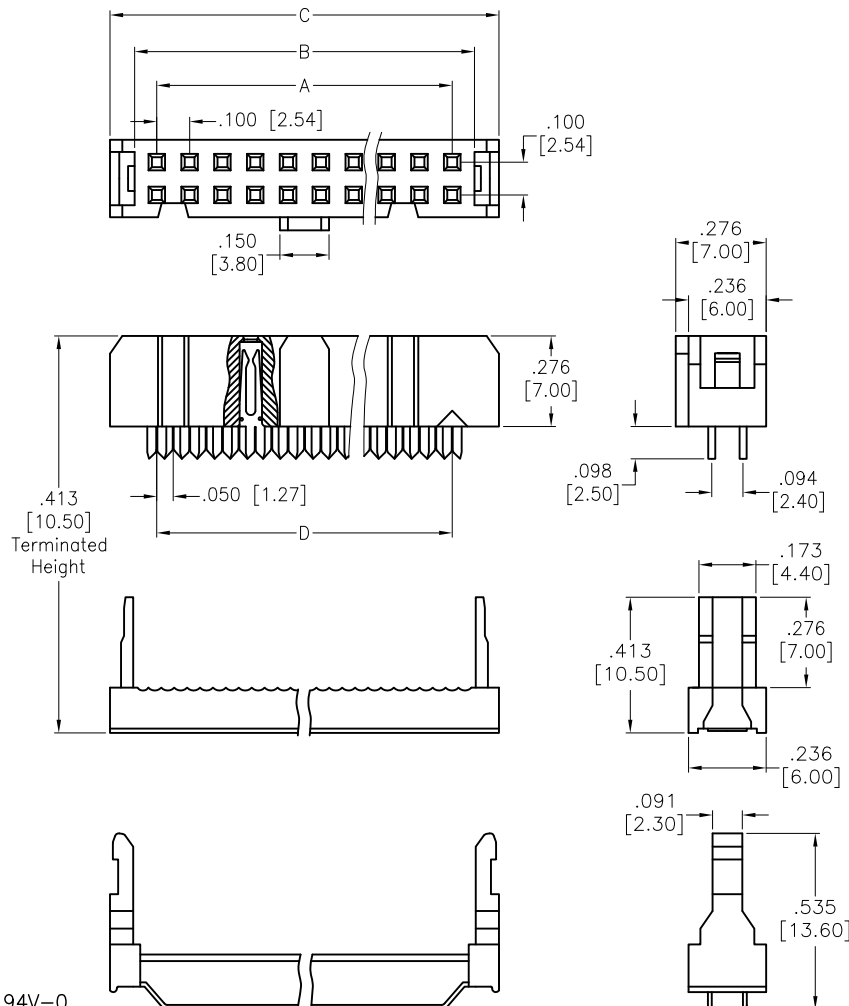


APPROVED: \_\_\_\_\_  
 DATE: \_\_\_\_\_ TITLE: \_\_\_\_\_

Rev	AWO #	Description	Date	Appr
-		RELEASED	6/22/17	



Positions: 06 thru 64  
 A= .100 [2.54] x No. of Spaces  
 B= .100 [2.54] x No. of Positions per Row + .035 [0.90]  
 C= .100 [2.54] x No. of Positions per Row + .185 [4.70]  
 D= .100 [2.54] x No. of Positions per Row - .050 [1.27]

#### SPECIFICATIONS:

##### Material:

Insulator: PBT, Glass reinforced, rated UL 94V-0

Insulator color: Black

Contacts: Phosphor Bronze

##### Plating:

Gold flash over Nickel underplate on contact area,

Tin over Nickel underplate on IDC tails

##### Electrical:

Current rating: 3 Amp

Contact resistance: 20 mohms max

Insulation resistance: 1,000 Mohms min

Dielectric withstanding voltage: 500 VAC

##### Temperature Rating:

-40°C to +105°C

##### Environmental:

Lead free, RoHS compliant.



UNLESS OTHERWISE SPECIFIED ALL DIMENSIONS ARE INCHES [MM] TOLERANCES: EXCEPT AS NOTED			<div>ADAM TECH</div> <div>909 Rahway Avenue, Union, NJ 07083</div> <div>Phone: 908-687-5000 Fax: 908-687-5710</div>			
INCHES		HOLES				
.X ± .10	Ø.X ± .10					
.XX ± .020	Ø.XX ± .015					
.XXX ± .015	Ø.XXX ± .010	TITLE				
APPROVALS		DATE		.100 [2.54] FLAT CABLE IDC SOCKET		
DRAWN	HR	6/22/17		DUAL WIPE CONTACTS, W/FSR		
CHECKED	MY	6/22/17		SIZE		
APPROVED				PART NO.		
				REV		
				-		
REF: S00111C				SCALE: NTS		
				SHEET 1 OF 1		