

CUSTOMER DRAWING

F4588

ECN#	APPRVD	DATE
/	/	/

SAFETY ORGANIZATIONS

THIS FILTER HAS BEEN FORMALLY RECOGNIZED, CERTIFIED OR APPROVED BY THE LISTED AGENCY. THEREFORE, ALL TEST/REQUIREMENTS SPECIFIED IN THE LATEST REVISION OF THE FOLLOWING AGENCY STANDARDS HAVE BEEN MET:

RELIABILITY SPECIFICATIONS:

STORAGE TEMPERATURE: -40°C TO +85°C
 HUMIDITY: 21 DAYS @ 40°C 95% RH.
 CURRENT OVERLOAD TEST: 6 TIMES I_r FOR 8 SECONDS

OPERATING SPECIFICATIONS

LINE CURRENT/VOLTAGE: 20 AMP, 250 VAC

LINE FREQUENCY: 50-60Hz

MAXIMUM LEAKAGE CURRENT, UNDER NORMAL OPERATING CONDITIONS: 3.3mA @ 250 VAC 50Hz

OPERATING AMBIENT TEMP. RANGE: -10°C TO +40°C @ RATED CURRENT, I_r.

IN AN AMBIENT, T_a, HIGHER THAN 40°C, THE MAXIMUM OPERATING CURRENT, I_o, IS AS FOLLOWS:

$$I_o = I_r \sqrt{\frac{100 - T_a}{60}}$$

TEST SPECIFICATIONS:

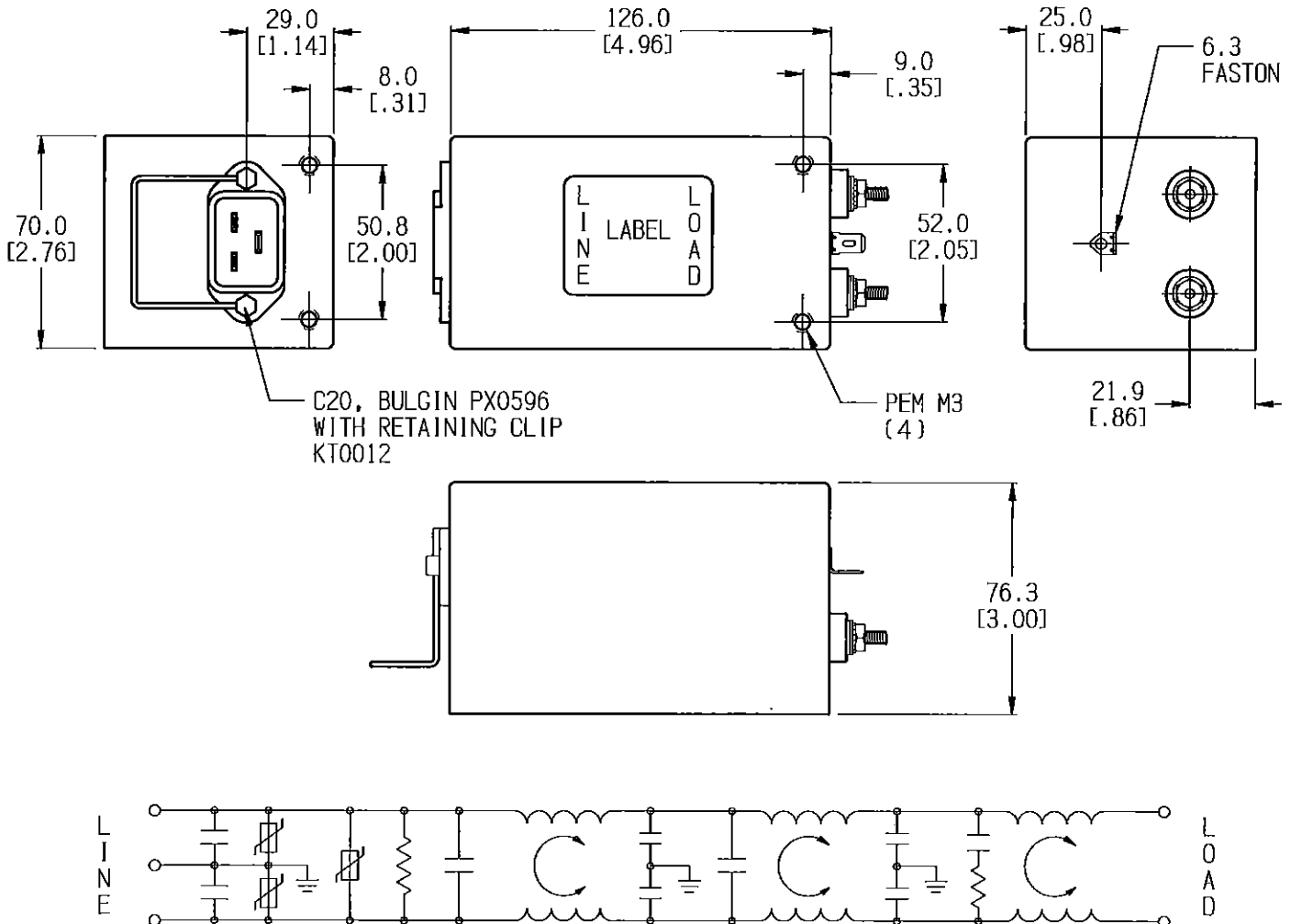
INDUCTANCE: 10.1 μH NOMINAL
 CAPACITANCE: (MEASURED @ 1KHz, 0.250VAC MAX., 25°C±1°C)
 LINE TO GROUND: .042 μF ±20%
 LINE TO LINE: 3.27 μF ±20%
 DISCHARGE RESISTOR:
 L/G AND L/L I.R. NONE/165K OHM
 NO DISCHARGE RESISTOR: 6000MΩ (MIN.) @ 100VDC, 20°C AND 50% RH

RECOMMENDED RECEIVING INSPECTION HIPOT:

LINE TO GROUND: 250 VAC FOR 2 SECONDS
 LINE TO LINE: 250 VAC FOR 2 SECONDS

FILTER APPROVAL:

THE BEST WAY TO SELECT AND QUALIFY A FILTER IS FOR YOUR ENGINEERING TO TEST THE UNIT IN YOUR EQUIPMENT.



50 Ω - 50 Ω (MINIMUM) INSERTION LOSS												
FREQUENCY MHz	0.01	0.03	0.05	0.10	0.15	0.30	0.50	1.0	3.0	5.0	10	30
COMMON dB	13	22	44	69	84	89	89	87	80	75	67	50
DIFF. dB	17	22	20	45	58	73	83	85	76	55	50	50

PARTS SHALL COMPLY WITH TYCO ELECTRONICS 136-702 SPECIFICATION FOR HAZARDOUS SUBSTANCES

UNLESS OTHERWISE SPECIFIED
 TOLERANCE TO BE ±0.64
 MATERIAL & FINISH: AS SUPPLIED
 DIMENSIONS IN MILLIMETERS

TE TE Connectivity

CUSTOMER DRAWING

TE PART NO.: 1-1609980-4

SCALE: 7/16	DATE: 17OCT12	DRAWING NUMBER: F4588	REV. C
DRW. BY: LJD	DRG. HS		

F4588-C.cld