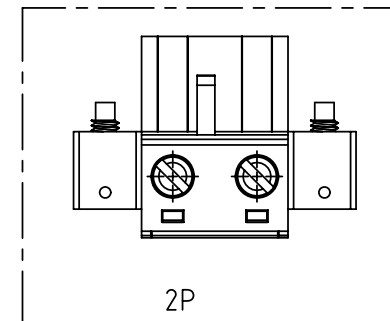
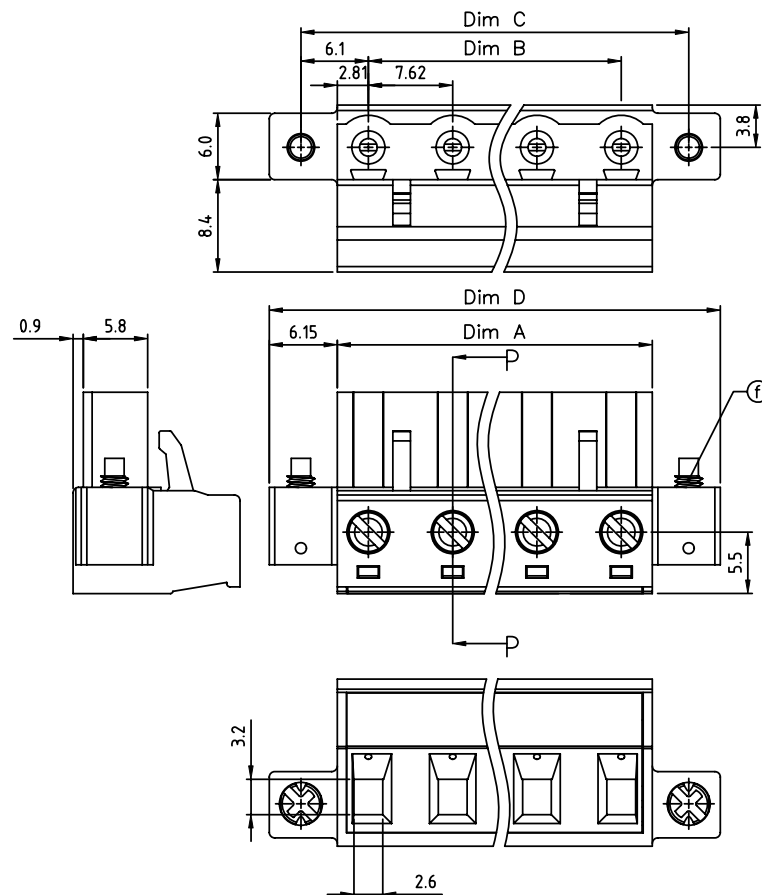


PRODUCT NUMBER

PITCH

TJxx01x200J0G

7.62 mm



Material

- Item ① Clamp: Brass(CuZn) Ni plated
- Item ② Terminal screw: Steel Zinc plating "-" slot type
- Item ③ Female contact: PhBz, Tin plated
- Item ④ Terminal Cover: Thermoplastic (UL94V-0)
- Item ⑤ Terminal housing: Thermoplastic (UL94V-0)
- Item ⑥ With flange screw: Steel Zinc plating M2.5"/+" slot type

Electrical cULus

- Voltage rating: 300VAC
- Current rating: 20A
- Wire range: 2.5mm²
- Solid wire(AWG): 12-24
- Stranded wire(AWG): 12-24
- Torque: 5Lb-In
- Screw: M3
- Wire strip length: 7-8mm
- Withstanding Voltage: 1.6KV
- Operating temperature: -40°C to +115°C
- Safety Approval:

N = Number of poles
 Dim A=(N-1)X7.62+5.62
 Dim B=(N-1)x7.62
 Dim C=(N-1)x7.62+12.2
 Dim D=(N-1)x7.62+18.0

Poles	Tolerance
2p-4p	±0.15
5p-8p	±0.20
9p-12p	±0.30
13p-16p	±0.40

PART NO.: TJ xx 01 x 2 00J0 G

02 2 CONTACTS
 03 3 CONTACTS
 ...
 16 16 CONTACTS

Color

0 Black (RAL9005)
 1 Red (RAL3001/D)
 3 Orange(RAL2011/P)
 4 Yellow(RAL1018/A)
 5 Green(RAL6018/T)
 6 Blue (RAL5015/A)
 8 Grey(RAL7035/D)
 9 White(RAL1102)
 C Green(RAL6018/U)

RoHS compliant
 (lead<4%)
 In copper Alloy

mat'l. code				surface ASME Y14.5	tolerance ASME Y14.5	projection	product family
ltr	ecn	no	dr	date	tolerances unless otherwise specified		TERMINAL BLOCK
					angles X±0.5	MM	title
					0.015 X.X±0.3		TERMINAL BLOCK
					X*±1° X.XX±0.1	scale	PLUGGABLE PLUG,DOWN CONTACT,WITH FLANGE
			dr	HANKE FENG	010714		dwg no
			enr	HANKE FENG	010714		sheet 1 of 1 size
			chr	SHI JUN	010714		TJxx01x200J0G
			appd	SHI JUN	010714		A4
sheet index	revision sheet	A	1				type
							CUSTOMER Drawing