

NOTES:

THIRD ANGLE PROJ.

1. MATERIALS AND FINISHES:

- HOUSING - BRASS, GOLD PLATING  
COVER - BRASS, GOLD PLATING  
BODY - BERYLLIUM COPPER, GOLD PLATING  
CONTACT - BRASS, GOLD PLATING  
INSULATOR - PTFE & DELRIN, NATURAL

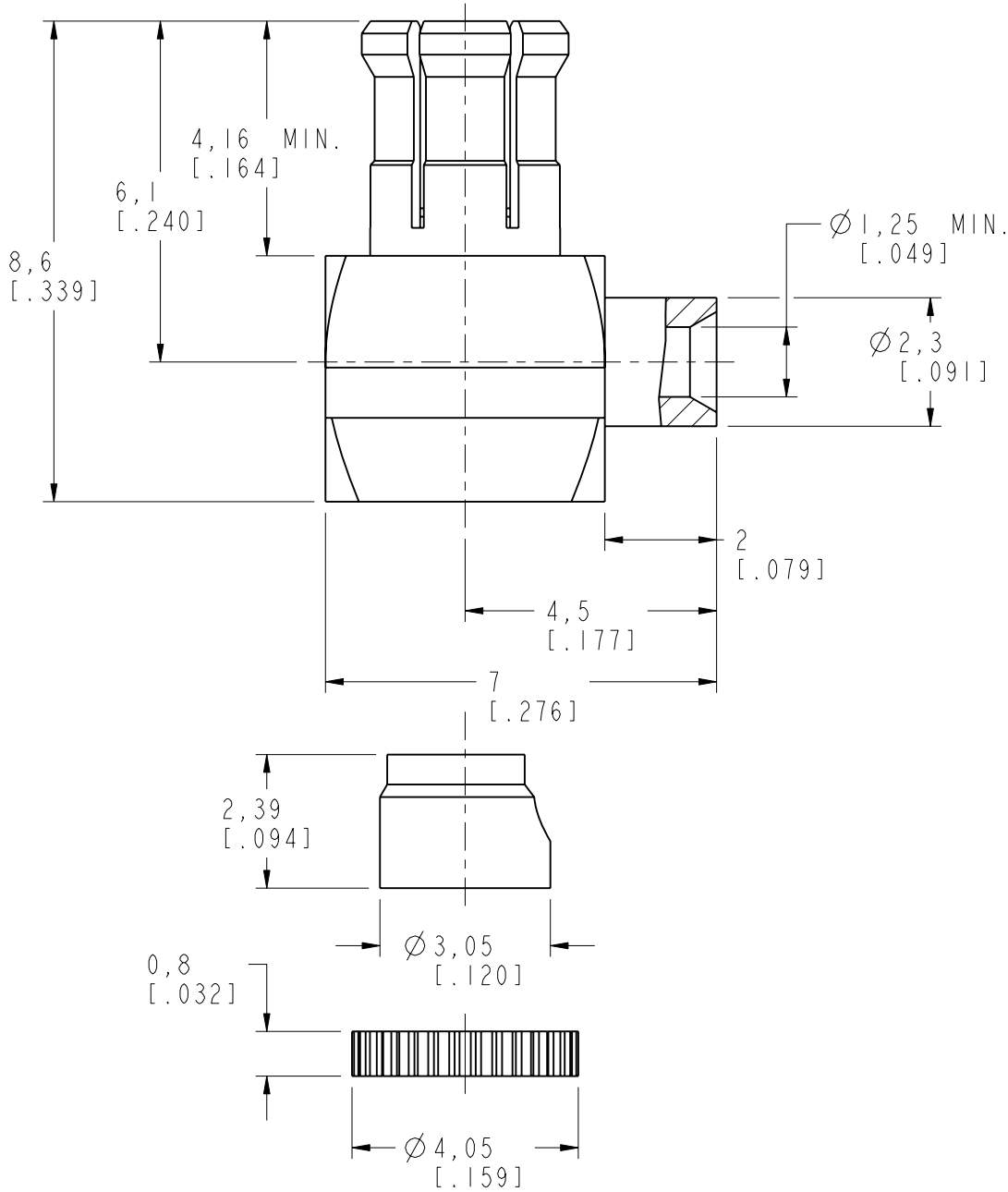
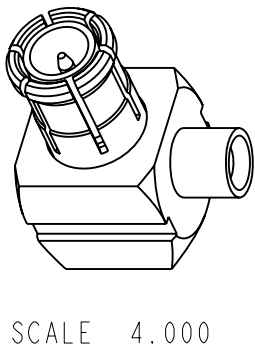
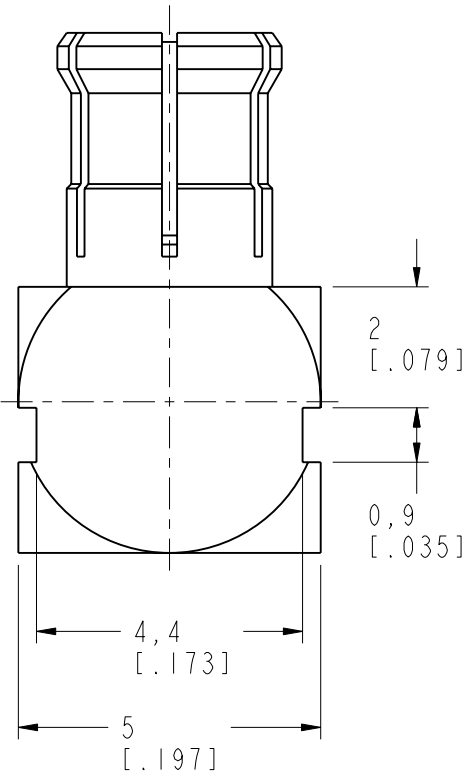
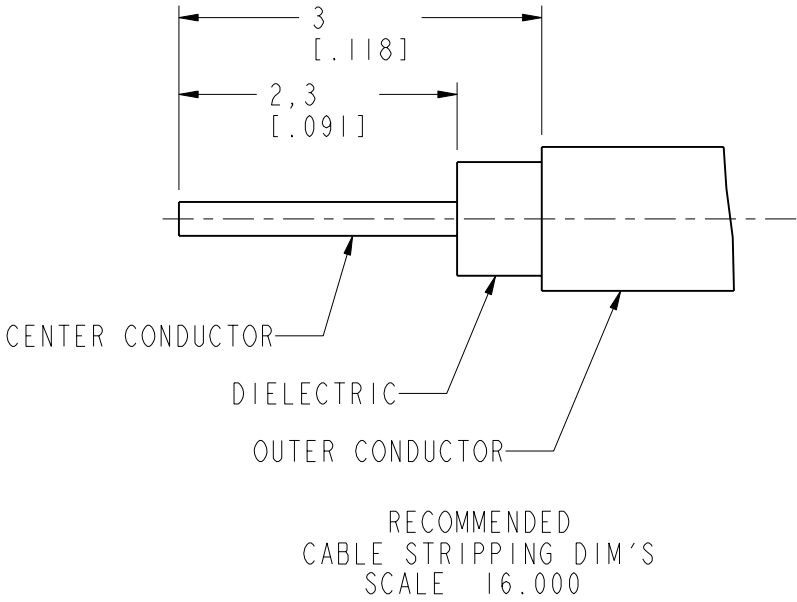
2. ELECTRICAL:

- A. IMPEDANCE: 50 OHM, NOMINAL  
B. FREQUENCY RANGE: 0-6 GHz  
C. VSWR (RETURN LOSS): 1.10 (-26.444 dB) MAX. @ 0-2.5 GHz  
D. D.W.V: 1000 VRMS, MIN.

3. MECHANICAL:

- A. DURABILITY: 500 CYCLES MIN.  
B. TEMPERATURE RANGE: -55°C TO +155°C

4. CONTACT PIN TO SOLDER



CUSTOMER OUTLINE DRAWING

ALL OTHER SHEETS ARE FOR INTERNAL USE ONLY

UNLESS OTHERWISE SPECIFIED, DIMENSIONS ARE IN METRIC AND TOLERANCES ARE: <0.5mm      0.5 - 6mm      6 - 30mm      30 - 120mm      ANGLES ± 0.05mm    ±0.1mm      ±0.2mm      ± 0.3mm      ±1°	MATERIAL	DRAWN	DATE	TITLE		Amphenol RF	
	-	M. ZHANG	01-Dec-15				
		ENGINEER	DATE	MCX R/A DIRECT SOLDER PLUG (FOR .047" SEMI RIGID CABLE)		www.amphenolrf.com	
		C. WANG	24-Jul-08				
	REFERENCE	APPROVED	DATE	SCALE: 8.0:1.0		SHEET 2 OF 2	
AND	S. HSIEH	01-Dec-15					
CONFIGURATION LEVEL: In Work	CAD FILE			DWG SIZE		REV	
FINISH				B		E	
						DRAWING NO. MCX1182A1-3GT30G-.047-50	
						ITEM NO. 081182AAA47GE5F	
						PART NO. 252158	