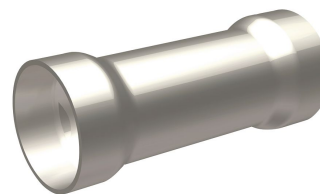


## BS14, Vinyl Splice, #16-14 AWG

By Burndy  
Catalog # BS14

Vinyl Splice For 16 - 14 AWG



### Features

- Manufactured from seamless electrolytic copper tubing to provide maximum conductivity and tensile strength in a high quality design with no seams to split
- Funnel entry for easy wire insertion
- Electro-tin plating provides durable, long lasting resistance to corrosion
- Expanded insulation support to lower inventory requirements
- Vinyl insulation provides an economical means of providing high dielectric values and cable insulation support

### Application

For Accommodating A Broad Range Of 600 Volt Cables

### Specifications

Buy American Compliant	Contact Manufacturer
Certification - cULus	No
EU RoHS Indicator	Yes
Certification - UL Recognized	No
Industry Standard(s)	UL467
Buy America(n) Qualified	Contact Manufacturer
Certification - ETL	No
Standards - Industry Standards Met	UL486
Standards - RoHS Compliance Status	CM
Certification - CSA Approved	Yes
UL Listed	Yes

### Conductor

Conductor - Copper Solid Size Range	16 AWG-14 AWG
Conductor Size	16 - 14 AWG
Conductor - Copper Str Size Range	16 AWG-14 AWG
Conductor Type	CU C Str-Size

### Configuration

Connector Type	Seamless Butt Splice
----------------	----------------------

### Current

Voltage - Maximum	600 V
-------------------	-------

### Dimensions

Package Length	0.000 in
Package Width	0.000 in
Package Weight	0.000 lb.
Dimension - Outside Diameter inch	0.18 in
Package Height	0.000 in
Dimension - Strip Length inch	1/4 in
Dimension - Length Overall inch	1.00 in
Dimension - Diameter Max Size inch	0.18 in

### General

Insulation Type	Vinyl
Trade Name	VINYLINK™
Insulation	Y
Sub Brand	VINYLINK
Color Code	Blue
Plated	Y
Type	BS
UPC 12 Digit	781810805688
UPC 14 Digit GTIN	00781810805688
Material	Copper
Plating Type	Tin
UPC	781810805688

### Logistics

Minimum Pack Quantity	1000
Carton Quantity	1000
Pallet Quantity	99999

### Operational

Temperature Rating	105
--------------------	-----

### Product Assets

[Catalog \[English\]](#)