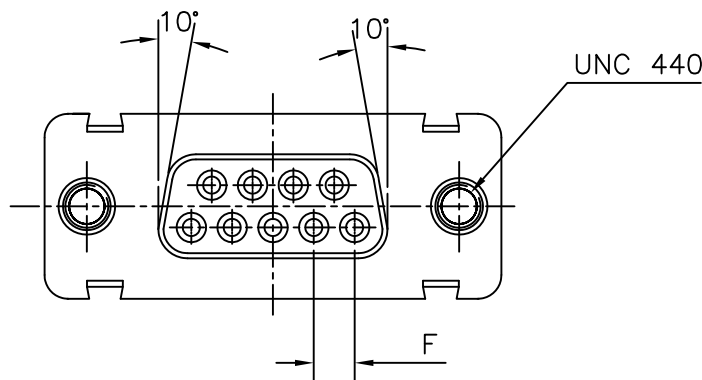
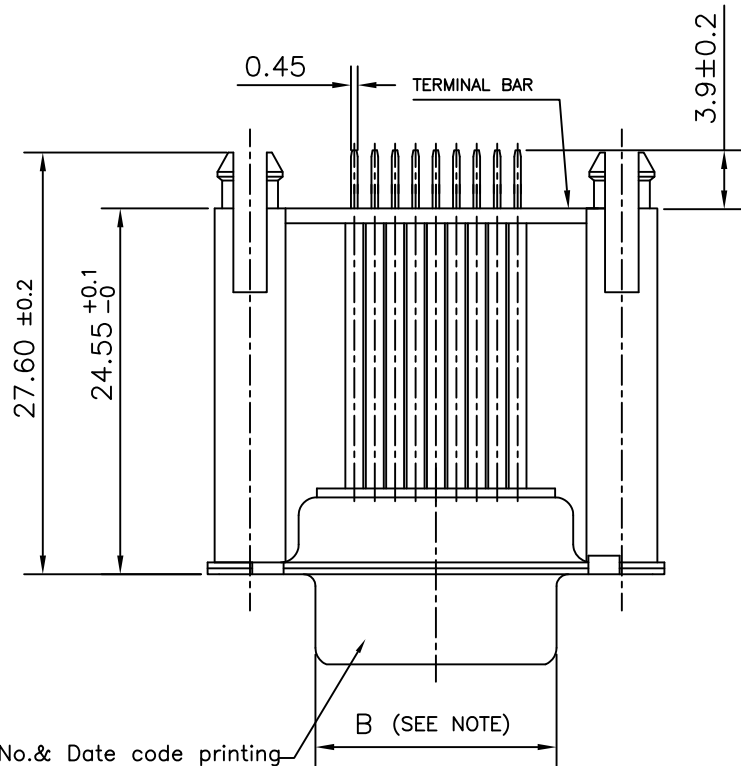
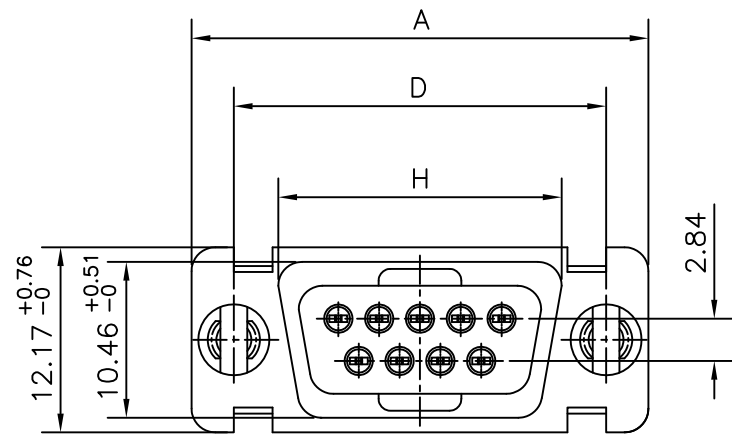




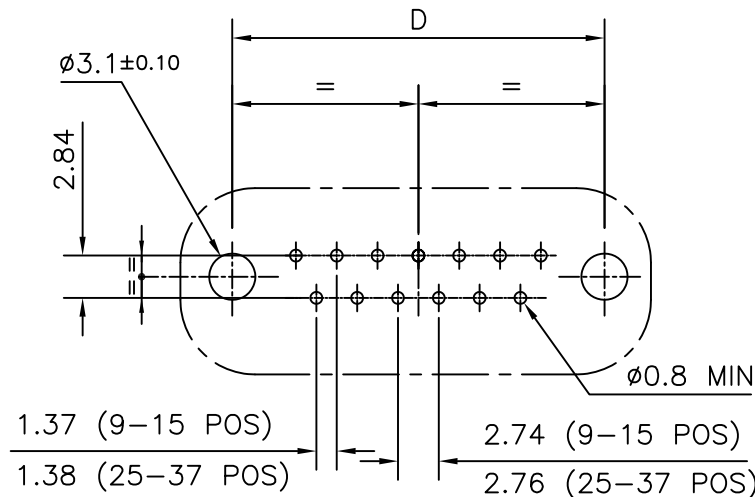
FCIconnect.com

Copyright FCI

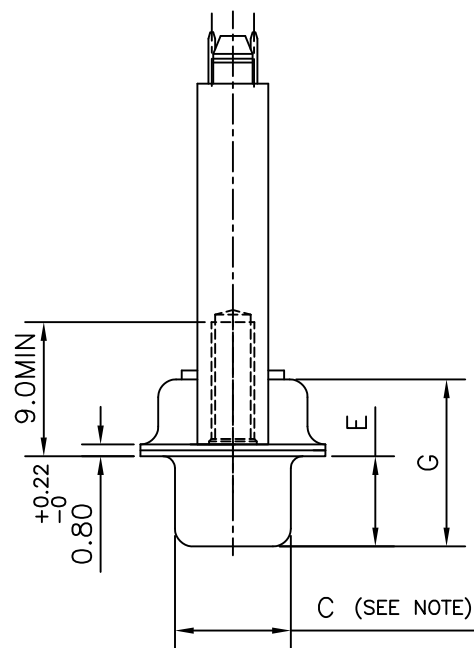


VIEW OF MATING FACE

NOTE - 1. INSIDE DIMENSIONS OF MALE AND OUT SIDE DIMENSIONS OF THE FEMALE CONNECTOR.



PCB DRILLING DETAIL



SERIES D E O 09 S 3 65 GT 102 LF
SHELL SIZE E,A,B,C
NO.OF CONTACTS 09,15,25,37
CONTACTS P - PIN S - SOCKET
LEAD FREE
SPECIAL CODE SPL. BOARD LOCK
CONTACT PLATING 0.76µ GOLD / GXT

37	P	68.94	55.30	8.23	63.50	5.85	2.76	11.09	57.45
	S	68.94	54.71	7.77	63.50	6.05	2.76	11.21	57.45
25	P	52.65	38.84	8.23	47.04	5.85	2.76	11.07	41.02
	S	52.65	38.25	7.77	47.04	6.05	2.76	11.21	41.02
15	P	38.76	25.12	8.23	33.32	5.85	2.74	10.99	27.25
	S	38.76	24.54	7.77	33.32	6.05	2.74	11.21	27.25
09	P	30.43	16.79	8.23	24.99	5.85	2.74	10.99	19.02
	S	30.43	16.21	7.77	24.99	6.05	2.74	11.21	19.02
SHELL SIZE	A	+0.76 0	+0.25 0	+0.25 0	+0.12 0	+0.15 0	F	G Max.	H +0.51 0

TECHNICAL SPECIFICATIONS

SHELLS	: TIN / ZINC PLATED STEEL.
INSULATOR MATERIAL	: SELF EXTINGUISHING THERMOPLASTIC- TO UL CLASS 94 V0
	THE HOUSING WILL WITHSTAND EXPOSURE TO 260-265°C IF WE USE PROTECTIVE ADHESIVE (type Kapton or Teflon) OR PROTECTIVE METALLIC DEVICE
CONTACTS DIA ON ACTIVE AREA	: Ø1 MM.
CONTACT MATERIAL	: COPPER ALLOY
CONTACT PLATING	: GOLD / GXT OVER NICKEL(ACTIVE ZONE)
	: TIN OVER NICKEL(TERMINATION ZONE)
FOR LEAD FREE PLATING	2 MIN.MATTE TIN TOP OVER
	1.27 MIN.NICKEL UNDER PLATE(ON TERMINATION ZONE)
OPERATING TEMPERATURE	: -55°C +125°C
OPERATING CURRENT	: 5 A PER CONTACT
CONTACT RESISTANCE	: ≤ 25mΩ
INSULATION RESISTANCE	: ≥ 5000 MΩ
TEST VOLTAGE	: 1000 V.r.m.s
MECHANICAL ENDURANCE	: 500 MATINGS .
DAMP HEAT	: 21 DAYS.
TORQUE	: 0.6~0.7 N-m

"This LF product meets European Union Directives and other country regulations as described in GS-22-008"

The housing will withstand exposure to 260°C peak temperature for 3.5 seconds in a wave solder application with a 1.6mm minimum thick circuit board.

Packaging as per GS-14-920

mat'l. code SEE NOTES				surface ISO 1302 ✓	tolerance ISO 406 ISO 1101	projection MM	product family			
tolerances unless otherwise specified				angles	linear	scale -	title			
E	i06-0074	GVJ	2006/06/08				D SUB FEMALE S/S CONNECTOR (WITH BOARD LOCK)			
F	I11-0003	AMR	2011-01-06				dwg no sheet 1 of 1 size			
				dr	Mini K Vandanath	2003/02/10	C-D SUB-0139			
				enr	George V Joseph	2003/02/10	A3			
				chr	Abhilash M R	2011-01-06	type Product Customer Drawing			
				appd	Sudhir Varma	2011-01-06				
sheet index	revision	F	1							