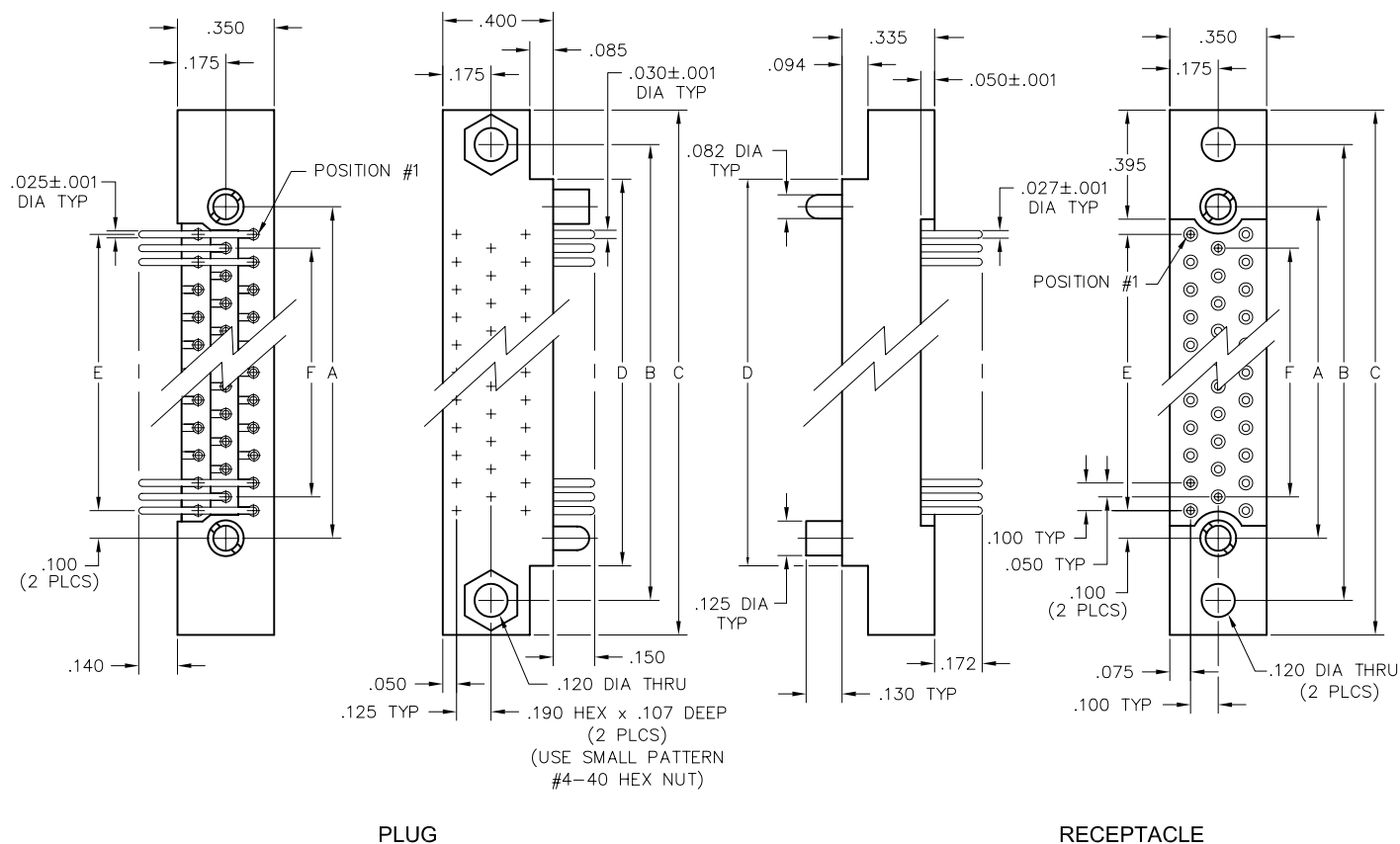
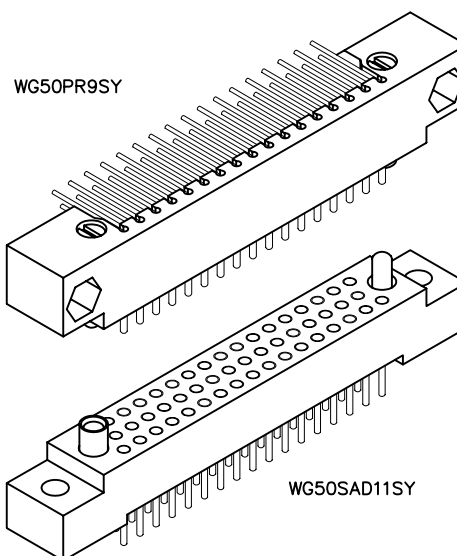


### 3 • ROW PC Card to Board or Chassis

.100"

## WG - WG

50 thru 104 Contacts



DIMENSIONS						
SIZE	A	B	C	D	E	F
50	1.800	2.250	2.500	2.000	1.600	1.500
62	2.200	2.650	2.900	2.400	2.000	1.900
80	2.800	3.250	3.500	3.000	2.600	2.500
92	3.200	3.650	3.900	3.400	3.000	2.900
104	3.600	4.050	4.300	3.800	3.400	3.300

PLUG: WG 50 PR9 SY  
 RECEPTACLE: WG 50 SAD11 SY  
 XX XX XXXXX XX

## PLUG

## RECEPTACLE

SERIES	
WG	Plug, right angle, with mounting ears
WG	Receptacle, straight, with mounting ears
WG	Receptacle, right angle, with mounting ears
SIZE	
XX	Number of contacts (50, 62, 80, 92, or 104)
XX	Number of contacts (50, 62, 80, 92, or 104)
CONTACTS	

- The contact type determines image of connector. Pin, right angle contacts are always plug image. Straight pin contacts or socket contacts are receptacle image.

TYPE CONTACTS/TERMINATIONS:

PR7 Pin, right angle, dip solder, .109" x .025" dia  
 PR9 Pin, right angle, dip solder, .140" x .025" dia  
 PR11 Pin, right angle, dip solder, .172" x .025" dia  
 PR15 Pin, right angle, dip solder, .234" x .025" dia  
 PRW34 Pin, right angle, wire wrap<sup>®</sup>, .531"  
 PRW42 Pin, right angle, wire wrap<sup>®</sup>, .656"

TYPE CONTACTS/TERMINATIONS:

SAC Socket, straight, solder cup (.035" I.D.)  
 SAD7 Socket, straight, dip solder, .109" x .027" dia  
 SAD9 Socket, straight, dip solder, .140" x .027" dia  
 SAD11 Socket, straight, dip solder, .172" x .027" dia  
 SAF3 Socket, straight, flex circuit, .050"  
 SAF6 Socket, straight, flex circuit, .093"  
 SAF9 Socket, straight, flex circuit, .140"  
 SAG7 Socket, straight, dip solder, .109" x .018" dia  
 SAG9 Socket, straight, dip solder, .140" x .018" dia  
 SAG11 Socket, straight, dip solder, .172" x .018" dia  
 SAP Socket, straight, pin termination .150", connector saver  
 SAW24 Socket, straight, wire wrap<sup>®</sup>, .375"  
 SAW40 Socket, straight, wire wrap<sup>®</sup>, .625"  
 SOR7 Socket, right angle, dip solder, .109" x .025" dia  
 SOR9 Socket, right angle, dip solder, .140" x .025" dia  
 SOR11 Socket, right angle, dip solder, .172" x .025" dia

## HARDWARE

- Plug facial seal gaskets and hoods; order separately or add "Q" in part number. Example: WG50PR9QJ.  
 See "Gaskets" and "Hoods" in Accessories section for instructions.

SY	Guide set	SY	Guide set
SY-#	Guide set, polarized	SY-#	Guide set, polarized
SYL	Guide set, long	SYL	Guide set, long
JT	Turning jackset, .435"	J	Fixed jackset
JTA	Turning jackset, .135"	JL	Fixed jackset, long
JTB	Hex turning jackset, .135"		
JTC	Hex turning jackset, .435"		
JTL	Turning jackset, long, .635"		

## OPTIONS

- Option Codes: Add to the end of the part number. Example: WG80PR9SY342. Call factory for additional codes.
- 342 Remove mounting ears. (.250" each end)
- 548 Bond #4-40 small pattern nut into mounting holes (for right angle plug connectors only).
- B82 Termination face sealed against conformal coating
- D01 Pretinned contact terminations (except solder cups, wire wraps<sup>®</sup> and flex contacts) with 63/37 or 60/40 solder. ☒
- P39 Pretinned contact terminations (except solder cups, wire wraps<sup>®</sup> and flex contacts) with SAC305 solder (lead free).
- D54 Combine -B82 & -D01 options
- G69 Solder cups fixed in an outward orientation (otherwise contacts will rotate)

☒ = Option not RoHS compliant

