



Part Number : [2130321032](#)

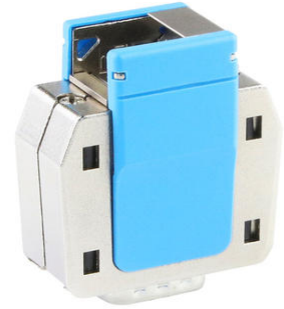
Product Description : FCT Jewel Metal Backshell for D-Sub Connector, Shell Size 1, Straight to 45° Angle Cable Outlet, with Cable Clamp and #4-40 Locking Screws, Blue

Series Number : 213032

Status : Not Recommended For New Design

Product Category : D-Sub Backshells

Engineering Part Number : 2130321032-FCT




Documents and Resources

Drawings

[2130321032_sd.pdf](#)

Product Environment Compliance

Compliance

GADSL/IMDS	Not Relevant
China RoHS	 per SJ/T 11365-2006
EU ELV	Not Relevant
Low-Halogen Status	Not Reviewed per IEC 61249-2-21
REACH SVHC	Not Contained per D(2022)4187-DC (10 June 2022)
EU RoHS	Compliant per EU 2015/863

Compliance Statements

- EU RoHS
- REACH SVHC
- Low-Halogen

Industry Documents

- IPC 1752A Class C
- IPC 1752A Class D
- Molex Product Compliance Declaration
- IEC-62474
- chemSHERPA (xml)

Substances of Interest

- PFAS

EU RoHS Certificate of Compliance

Additional Product Compliance Information

Part Details

General

Status	Not Recommended For New Design
Category	D-Sub Backshells
Series	213032
Description	FCT Jewel Metal Backshell for D-Sub Connector, Shell Size 1, Straight to 45° Angle Cable Outlet, with Cable Clamp and #4-40 Locking Screws, Blue
Magnetic	Yes
Product Name	FCT Products
Type	Rugged Metal
UPC	195842781870

Electrical

Shielded	Yes
Shield Type	Solid Metal

Physical

Cable Diameter	3.00-9.50mm
Color - Resin	Blue
Material - Backshell	Zinc Die-cast
Material - Screw	Steel
Mounting Style	Locking Screw
Orientation	Straight to 45°
Packaging Type	Tray
Plating - Backshell	None
Shell Size	1
Temperature Range - Operating	-35° to +100°C

Thread Size	4-40 UNC
Thread Type	Standard
Waterproof / Dustproof	Yes
Waterproof / Dustproof Type	IP20

Mates With / Use With

Use with Part(s)

Description	Part Number
Use With	FCT D-Sub, Size 1

This document was generated on May 26, 2026