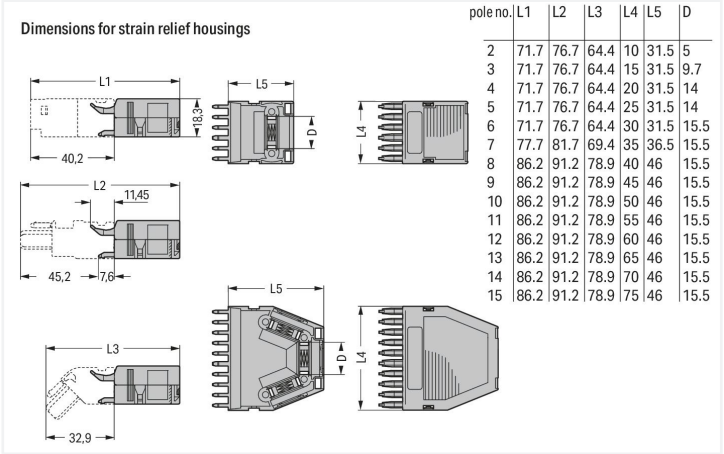


Color: ■ gray

Similar to illustration



Dimensions in mm
Dimensions in mm

Connection data

Connection 1	
Pole number	14

Physical data

Width	70 mm / 2.756 inches
Height	18.3 mm / 0.72 inches
Depth	46 mm / 1.811 inches

Material data

Note (material data)	Information on material specifications can be found here
Color	gray
Fire load	0.617 MJ
Weight	16.7 g

Commercial data

Product Group	18 (X-COM-System)
eCl@ss 10.0	27-14-11-92
eCl@ss 9.0	27-14-11-92
ETIM 8.0	EC002848
ETIM 7.0	EC002848
PU (SPU)	25 pcs
Packaging type	Box
Country of origin	DE
GTIN	4017332736503
Customs tariff number	39269097900



Environmental Product Compliance	
RoHS Compliance Status	Compliant,No Exemption

Downloads

Environmental Product Compliance	
Compliance Search	
Environmental Product Compliance 769-1614	↓

Documentation			
Additional Information		Bid Text	
Technical Section	pdf 2246.92 KB	769-1614	19.02.2019 xml 2.64 KB ↓
		769-1614	23.05.2017 doc 23.00 KB ↓

CAD/CAE-Data	
CAD data	CAE data
2D/3D Models 769-1614	EPLAN Data Portal 769-1614
↓	↓
	WSCAD Universe 769-1614
	↓
	ZUKEN Portal 769-1614
	↓

1 Compatible Products
1.1 Optional Accessories
1.1.1 Installation
1.1.1.1 Mounting accessories



Item No.: 209-174 Cable clamp; for strain relief; 7 or more poles	Item No.: 209-173 Fixing screw; for cable clamp; 7 or more poles
--	---

1.1.2 Marking

1.1.2.1 Marker



Item No.: 209-501/000-006
WSB marking card; as card; not stretchable; plain; snap-on type; blue



Item No.: 209-501/000-007
WSB marking card; as card; not stretchable; plain; snap-on type; gray



Item No.: 209-501/000-023
WSB marking card; as card; not stretchable; plain; snap-on type; green



Item No.: 209-501/000-017
WSB marking card; as card; not stretchable; plain; snap-on type; light green



Item No.: 209-501/000-012
WSB marking card; as card; not stretchable; plain; snap-on type; orange



Item No.: 209-501/000-005
WSB marking card; as card; not stretchable; plain; snap-on type; red



Item No.: 209-501/000-024
WSB marking card; as card; not stretchable; plain; snap-on type; violet



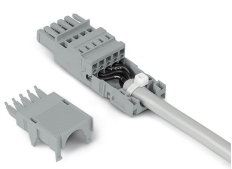
Item No.: 209-501
WSB marking card; as card; not stretchable; plain; snap-on type; white



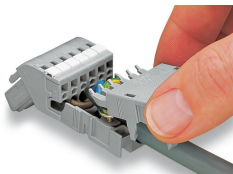
Item No.: 209-501/000-002
WSB marking card; as card; not stretchable; plain; snap-on type; yellow

Installation Notes

Installation



2- to 5-pole strain relief housings feature one cable outlet (rear side).
6- to 7-pole strain relief housings feature one cable outlet (rear side).
8- to 9-pole strain relief housings feature two cable outlets and one cover.
10- to 16-pole strain relief housings feature three cable outlets and two covers.

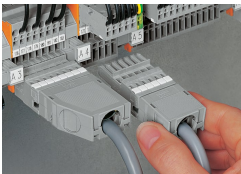


Snapping on a strain relief housing.



Snap-on type strain relief housing, consists of strain relief support and housing, 6-pole and 1-conductor female plugs, angled, 6-pole

Application



Application
Snap-on type strain relief housings for 769 Series