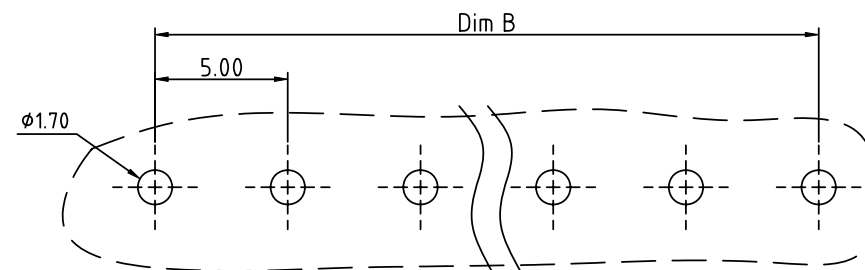
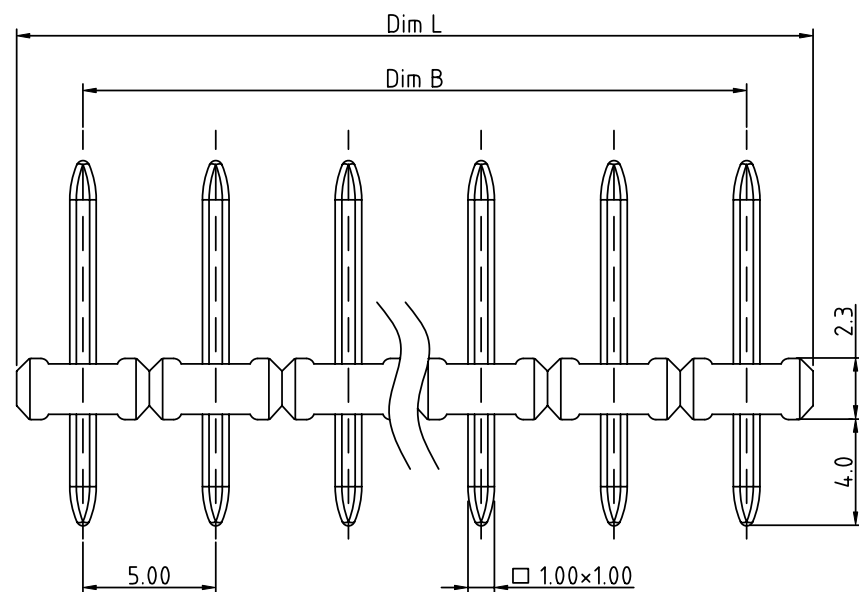
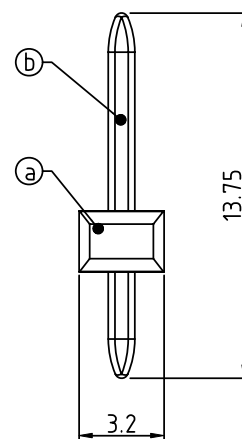


PRODUCT NUMBER

PITCH

EPxx000000J0G

5.00 mm

RECOMMENDED P.C.B LAYOUT
TOP VIEW

Material:

- Item (a) Terminal body: Thermoplastic Black Color UL94V-0
- Item (b) Pin : Brass , Tin plated

Electrical:

- Voltage rating: 300V
- Current rating: 15A
- Withstanding Voltage: 1.6KV
- Operating temperature: -40°C to +115°C
- Soldering temperature: 260°C±5°C/5 Sec
- Safety Approval: us

N=NUMBER OF POLES

Dim L=N×5.00

Dim B=(N-1)×5.00

POLES	Tolerance
2P-5P	±0.10
6P-10P	±0.15
11P-15P	±0.20
16P-20P	±0.25
21P-24P	±0.30

PART NO.: EP xx 0 0 0 0 00J0 G

Solid block
No. of poles
02 2 poles
03 3 poles
... ..
24 24 poles

RoHS compliant
(lead<4%)
In copper Alloy

mat'l. code				surface ASME Y14.5 ✓	tolerance ASME Y14.5	projection 	product family TERMINAL BLOCK			
ltr	ecn	no	dr	date	tolerances unless otherwise specified		title			
					angles	X.±0.5	TERMINAL BLOCK			
					parallel	X.X±0.3	PLUGGABLE SOCKET, VERTICAL			
					X°±1°	X.XX±0.1	scale			
					dr	EVIN ZHONG 041714				
					enr	EVIN ZHONG 041714				
					chr	HANKE FENG 041714				
					appd	SHI JUN 041714				
sheet index	revision	A		1			dwg no			
	sheet	1					EPxx000000J0G			
							sheet 1 of 1			
							size			
							A4			
							type			
							CUSTOMER Drawing			