

K5AT

Illuminated SMT Tact Switch



Description

The K5AT series illuminated SMT tact switch offers high, bright LED lights and reduced space usage on board "2 in 1." It's excellent ergonomics, sharp tactile feel and audible click make it ideal for network infrastructure, telecom and medical applications that need to perform in the harshest environments.

Features & Benefits

- High bright LED's
- Gold plated dome contact offering superior contact reliability in time
- Excellent ergonomics: sharp tactile feel and audible click
- Reduced space usage on board "2 in 1"
- 40 N overload
- Tape and reel
- RoHS compliant and compatible

Applications

- Application requiring illumination
- Server, storage
- Network infrastructure
- Telecom
- Medical

Specifications

Function	Momentary
Contact Arrangement	Normally Open
Terminals	SMT with positioning pegs; SMT without positioning pegs is available, contact Customer Service
Packaging	Standard: 900 pcs per reel; Reel diameter 380 mm Reduced: 180 pcs per reel; Reel diameter 180 mm

Electrical Characteristics

Min. / Max. Power	0.02 VA - 1.0 VA
Min. / Max. Voltage	20m VDC - 32 VDC
Min. / Max. Current	0.1 mA - 100 mA
Contact Resistance	< 100mΩ
Insulation Resistance	>1G Ω initial, >10M Ω after damp heat
Bounce Time	< 10 ms

Environmental Characteristics

Operating Temperature	-40°C to 125°C
Storage Temperature	-55°C to 125°C
Relative Humidity	90 to 96% according to NF EN 60068-2-30
Protection	Dust protection and flux tight (IP 40)
Overload	40N min

Process

Soldering	Compatible with the lead free soldering profile. No washing. MSL Level: 5
------------------	---

Materials

Contacts	Au over Ni
Terminals	Au over Ni
Housing	Thermoplastic UL94 V0

Mechanical Characteristics

Part #	Actuation Force (N)	Operating Life (operations)	Travel (total travel mm)
K5AT xx 43GP	4.0	100,000	0.45 (0.95)

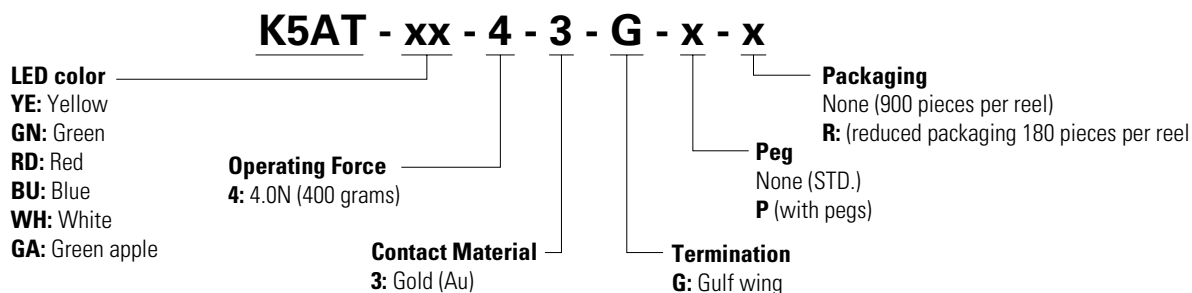
K5AT

Illuminated SMT Tact Switch

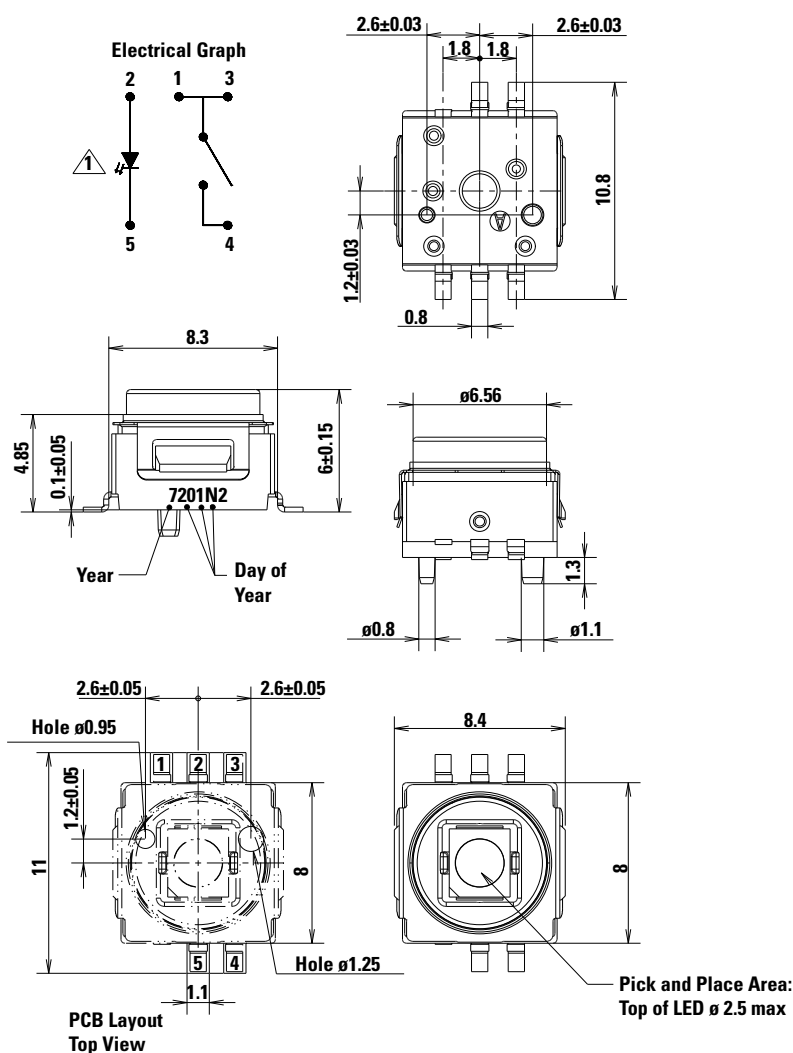


Ordering Number

Our easy build-a-switch concept allows you to mix and match options to create the switch you need. To order, select desired option from each category and place it in the appropriate box.



K5AT Drawings and Dimensions



Illuminated SMT Tact Switch

[illegible]