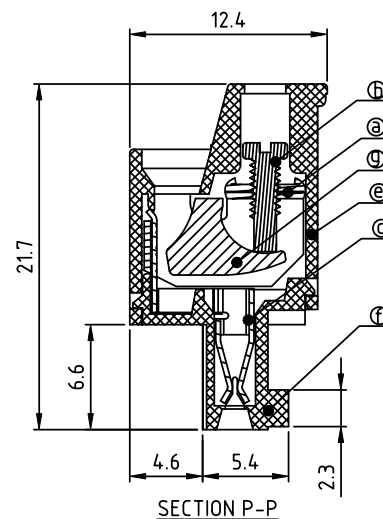
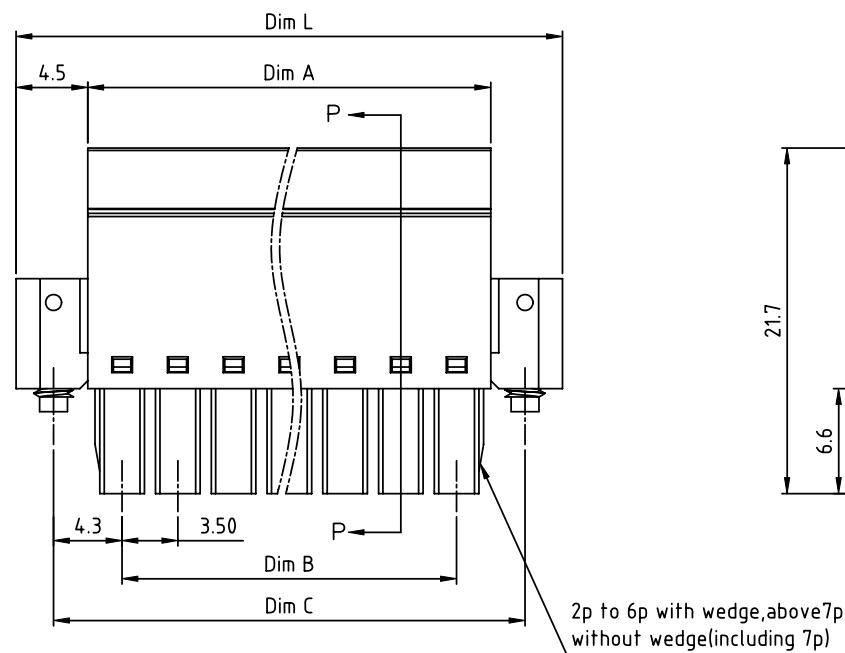
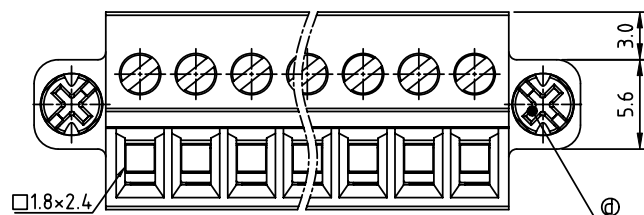



PRODUCT NUMBER	PITCH
VMxx15x200J0G	3.50 mm



Material

- Item a Clamp: Steel zinc plated.
- Item b Terminal screw: Steel Zinc plating "-" slot type
- Item c Female contact: PhBz Tin plated
- Item d With flange screw: Steel zinc plated M2.5"/-"/slot type
- Item e Terminal (top body): Thermoplastic (UL94V-0)
- Item f Terminal (bottom body): Thermoplastic (UL94V-0)
- Item g Clampage: Steel Zinc plated

Electrical cULus

- Voltage rating: 300VAC
- Current rating: 10A
- Wire range:
- Solid wire(AWG): 16-28
- Stranded wire(AWG): 16-28
- Torque: 1.7Lb-In
- Screw: M2
- Wire strip length: 6-7mm
- Withstanding Voltage: 1.6KV
- Operating temperature: -40°C to +115°C
- Safety approval: 

Dimension

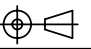
Dim L	(N-1)x3.5+13.3
Dim A	Nx3.5+0.80
Dim B	(N-1)x3.5
Dim C	(N-1)x3.5+8.6

N = Number of poles

Poles	Tolerance
2p-6p	±0.10
7p-12p	±0.20
13p-18p	±0.30
19p-24p	±0.40

PART NO.: VM xx 15 x 2 00J0 G

		Color	RoHS compliant
Solid block	0	Black (RAL9005)	(lead<4%)
No. of poles	2	Red (RAL3001/D)	In copper Alloy
02 2 poles	3	Orange(RAL2011/P)	
03 3 poles	4	Yellow(RAL1018/A)	
...	5	Green(RAL6018/T)	
24 24 poles	6	Blue (RAL5015/A)	
	8	Grey(RAL7035/D)	
	9	White(RAL1102)	
	C	Green(RAL6018/U)	

mat'l. code				surface	tolerance	projection	product family		
ltr ecn no dr date				ASME Y14.5	ASME Y14.5		TERMINAL BLOCK		
				tolerances unless otherwise specified		MM	title		
				angles	X.±0.5		TERMINAL BLOCK		
				flat	X.X±0.3		PLUGGABLE PLUG, WITH FLANGE		
				X'±1"	X.XX±0.1	scale	dwg no		
				dr	EVIN ZHONG 041914		sheet 1 of 1 size		
				enr	EVIN ZHONG 041914		VMxx15x200J0G		
				chr	HANKE FENG 041914		A4		
				appd	SHI JUN 041914		type		
							CUSTOMER Drawing		
sheet index	revision	A	1						