

PTS 641 Series SMT Top Actuated

NEW!

Features/Benefits

- 6.3 x 6.3 mm footprint
- Multiple heights
- Ground pin option

Typical Applications

- Metering
- White goods
- Home and garden equipment



B

Tactile Switches

Specifications

FUNCTION: momentary action
CONTACT ARRANGEMENT: 1 make contact = SPST N.O.
TERMINALS: G type for SMT

Mechanical

TRAVEL:
0.20 mm ± 0.15 mm for 160 & 250 gf
0.30 mm ± 0.15 mm for 320 gf
OPERATING LIFE: 100,000 cycles
OPERATION FORCE:
160 gf ± 50 gf blue actuator
250 gf ± 50 gf red actuator
320 gf ± 80 gf black actuator

Packaging

Switches in reels of 1,500 pieces.
Dimensions of reels according to EIA 481B
External diameter 330 mm

Electrical

MAXIMUM VOLTAGE: 12 VDC
MAXIMUM CURRENT DC: 50 mA
DIELECTRIC STRENGTH: 250 VA C (1mm)
CONTACT RESISTANCE: ≤ 100 mΩ
INSULATION RESISTANCE: ≥ 100 MΩ
BOUNCE TIME: < 5 ms

Environmental

OPERATING TEMPERATURE: -20°C to 70°C

Process

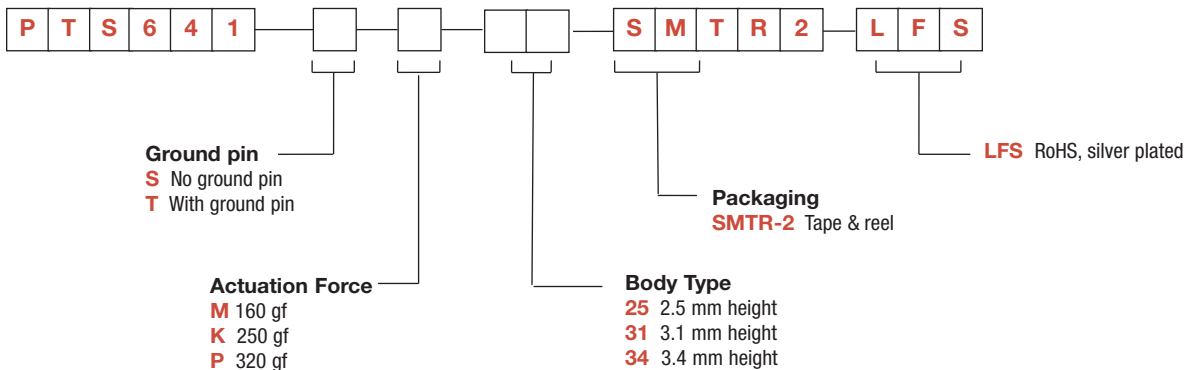
SOLDERING: This component is suited to the following methods:
Infrared Reflow Soldering in accordance with IEC61760-1

NOTE: Specifications listed above are for switches with standard options.
For information on specific and custom switches, consult Customer Service Center.

How To Order

Our easy build-a-switch concept allows you to mix and match options to create the switch you need. To order, select desired option from each category and place it in the appropriate box.

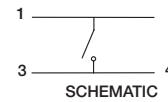
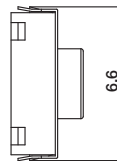
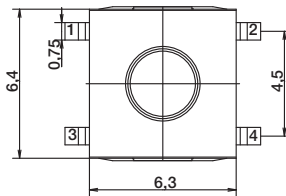
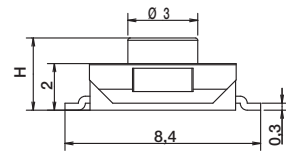
For any part number different from those listed above, please consult your local representative.



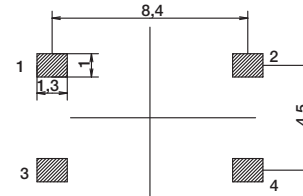
NEW!

PTS 641 Series SMT Top Actuated

NO GROUND PIN H= 2.5, 3.1, OR 3.4 MM

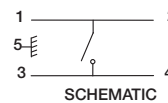
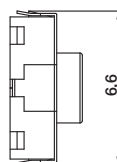
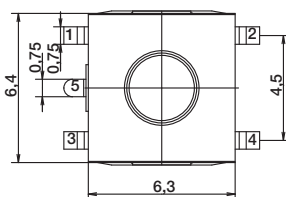
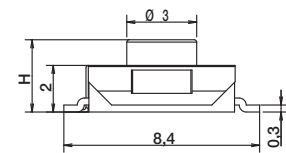


SCHEMATIC

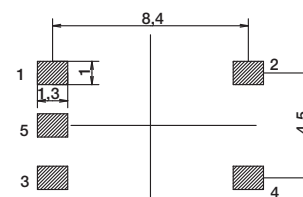


RECOMMENDED PCB LAYOUT

GROUND PIN H= 2.5, 3.1 OR 3.4 MM



SCHEMATIC



RECOMMENDED PCB LAYOUT



B

Tactile Switches