

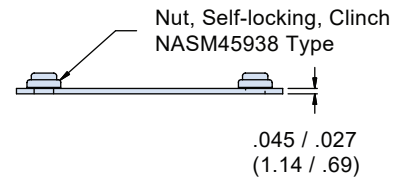
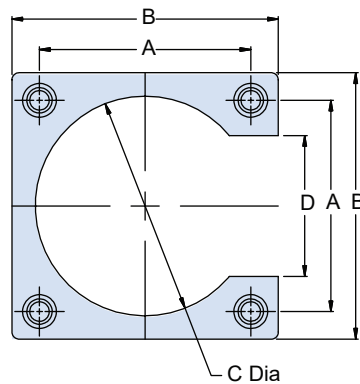
# SERIES 80 MIGHTY MOUSE CONNECTORS Accessories, Backshells, and Tools



## Nut Plate with Standard or Metric Threads for Series 800, 801, 802, and 805 Connectors



How To Order			
<b>Sample Part Number</b>	<b>809-199</b>	<b>-10</b>	<b>EAP</b>
<b>Series</b>	809-199 = Nut Plate with standard threads 809-303 = Nut Plate with metric threads		
<b>Dash No.</b>	1 thru 22		
<b>Shell Material/Finish</b>	Mounting Flange: Aluminum Alloy Clinch Nuts: Cres/Passivate Omit for Chem Film per MIL-C-5541 EAP - Polyamide Primer per MIL-PRF-23377		



Dash No	800 shell Size	801 Shell Size	802 Shell Size	805 Shell Size	Dimensions										809-199 Thread Size	809-303 Thread Size
					A ± .005		B ± .010		C ± .010		D ± .010					
					in	mm	in	mm	in	mm	in	mm				
1			5		.500	12.70	.780	19.81	.400	10.16	.220	5.59	4-40	M3 X .5		
2			6		.625	15.88	.905	22.99	.600	15.24	.345	8.76	4-40	M3 X .5		
3				8	.660	16.76	.880	22.35	.700	17.78	.440	11.18	2-56	M2 X .4		
4			7		.688	17.48	.968	24.59	.680	17.27	.408	10.36	4-40	M3 X .5		
5	9,10				.720	18.29	1.000	25.40	.728	18.49	.440	11.18	4-40	M3 X .5		
6				9	.720	18.29	.940	23.88	.728	18.49	.440	11.18	2-56	M2 X .4		
7			8		.750	19.05	1.030	26.16	.770	19.56	.470	11.94	4-40	M3 X .5		
8				10	.785	19.94	1.005	25.53	.805	20.45	.565	14.35	2-56	M2 X .4		
9	12	13	9		.812	20.62	1.092	27.74	.860	21.84	.532	13.51	4-40	M3 X .5		
10				11	.848	21.54	1.068	27.13	.868	22.05	.628	15.95	2-56	M2 X .4		
11			10		.875	22.23	1.155	29.34	.946	24.03	.595	15.11	4-40	M3 X .5		
12	14				.909	23.09	1.189	30.20	.955	24.26	.629	15.98	4-40	M3 X .5		
13				12	.909	23.09	1.129	28.68	.909	23.09	.629	15.98	2-56	M2 X .4		
14			12		.938	23.83	1.218	30.94	1.018	25.86	.658	16.71	4-40	M3 X .5		
15	15				.969	24.61	1.249	31.72	1.049	26.64	.689	17.50	4-40	M3 X .5		
16		16			.981	24.92	1.261	32.03	1.061	26.95	.701	17.81	4-40	M3 X .5		
17		17		15	1.060	26.92	1.340	34.04	1.140	28.96	.780	19.81	4-40	M3 X .5		
18			14		1.125	28.58	1.405	35.69	1.205	30.61	.845	21.46	4-40	M3 X .5		
19		19*	15		1.188	30.18	1.468	37.29	1.268	32.21	.908	23.06	4-40	M3 X .5		
20				18	1.255	31.88	1.535	38.99	1.335	33.91	.975	24.77	4-40	M3 X .5		
21		21*		19	1.327	33.71	1.607	40.82	1.407	35.74	1.047	26.59	4-40	M3 X .5		
22				23	1.570	39.88	1.850	46.99	1.650	41.91	1.290	32.77	4-40	M3 X .5		

\* Available for 809-199 only

ACCESSORIES, BACKSHELLS, AND TOOLS