

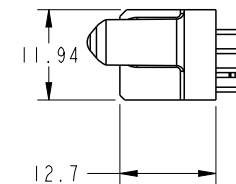
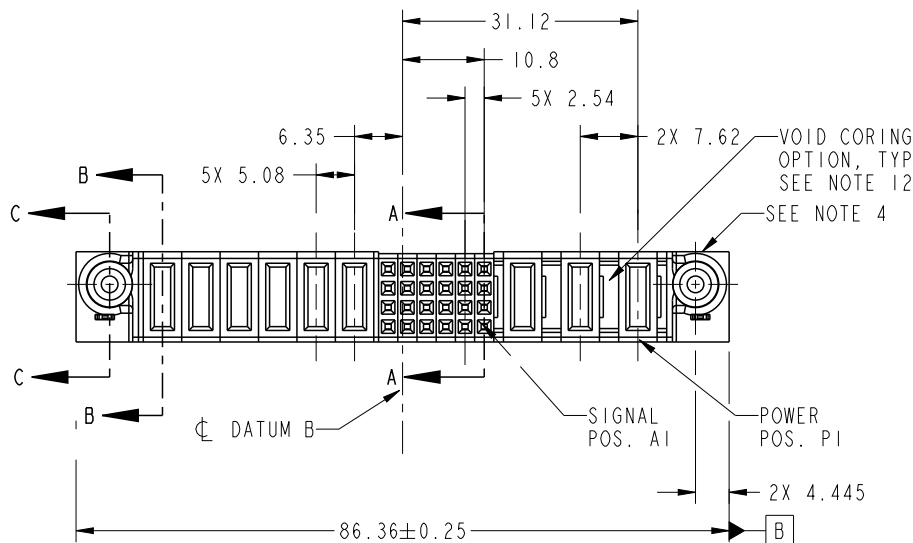




Copyright FCI.

| PRODUCT NO.             | ROWS             | POWER   |    |    |    |    |    |    | SIGNAL |   |   |   |   |   |    | POWER |    |  |  |
|-------------------------|------------------|---|----|----|----|----|----|----|--------|---|---|---|---|---|----|-------|----|--|--|
|                         |                  | E2  | P9 | P8 | P7 | P6 | P5 | P4 | 6      | 5 | 4 | 3 | 2 | 1 | P3 | P2    | P1 | E1   |  |
| 51940-346_ _<br>NOTE: 3 | D<br>C<br>B<br>A |  | PA | PA | PA | PA | PA | PA | E      | E | E | E | E | E | PA | PA    | PA |  |  |



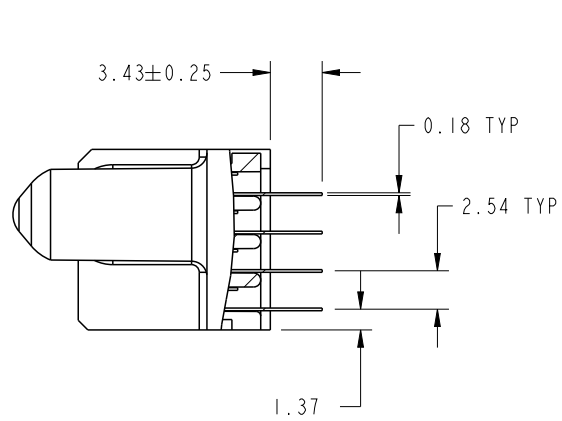
| CODE | DIM "M"<br>MATING<br>LENGTH | CONTACT<br>TYPE |
|------|-----------------------------|-----------------|
| E    | [N/A]                       | SIGNAL          |
| PA   | [1.07]                      | POWER           |
| HA   | [N/A]                       | HOLD-DOWN       |

|               |                                       |       |       |             |   |            |                |        |                        |    |       |              |
|---------------|---------------------------------------|-------|-------|-------------|---|------------|----------------|--------|------------------------|----|-------|--------------|
| spec ref      |                                       | *     |       | dr          | Anson Liu                                       | 2010/05/14 | projection<br> | MM<br> | size                   | A4 | scale | 1:1          |
| tolerance std | TOLERANCES UNLESS OTHERWISE SPECIFIED |       |       | eng         | Luo Weller                                      | 2013/03/04 |                |        | ecn no                 | -  |       |              |
|               |                                       |       |       | chr         | -   | -          |                |        | rel level              |    |       |              |
|               |                                       |       |       | appr        | Pei-Ming Zheng                                  | 2013/03/04 | Released       |        |                        |    |       |              |
| surface ✓     | linear                                | 0.X   | ±0.5  |             | title<br>3ACP + 24S + 6P<br>VERTICAL STB RECEPT |            |                | dwg no | 51940-346              |    |       | rev<br>A     |
|               |                                       | 0.XX  | ±0.25 |             |   |            |                |        |                        |    |       |              |
|               |                                       | 0.XXX | ±0.1  |             |   |            |                |        |                        |    |       |              |
|               | angular                               | 0°    | ±2°   | www.fci.com | cat. no.  |            |                | *      | Product - Customer Drw |    |       | sheet 1 of 4 |

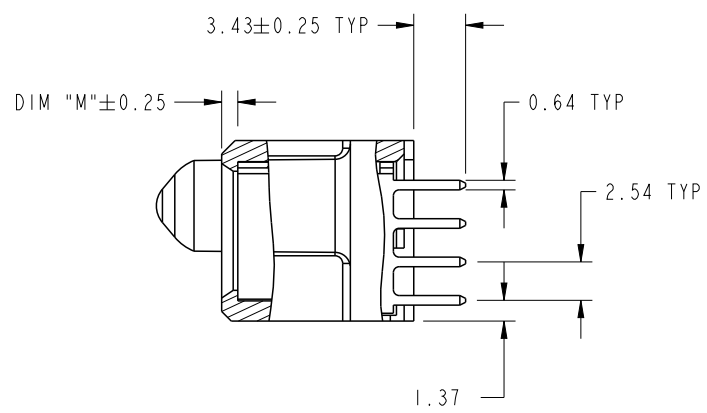
PrintE File - REV C - 2009-06-09



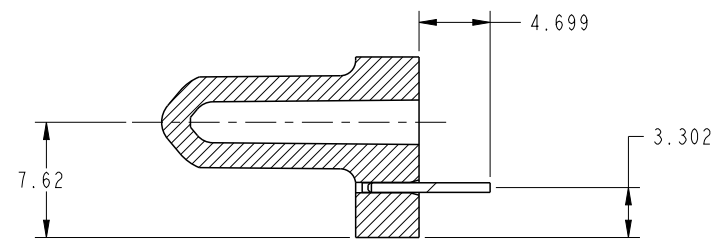
Copyright FCI.



SECTION A-A  
SCALE 2:1



SECTION B-B  
SCALE 2:1

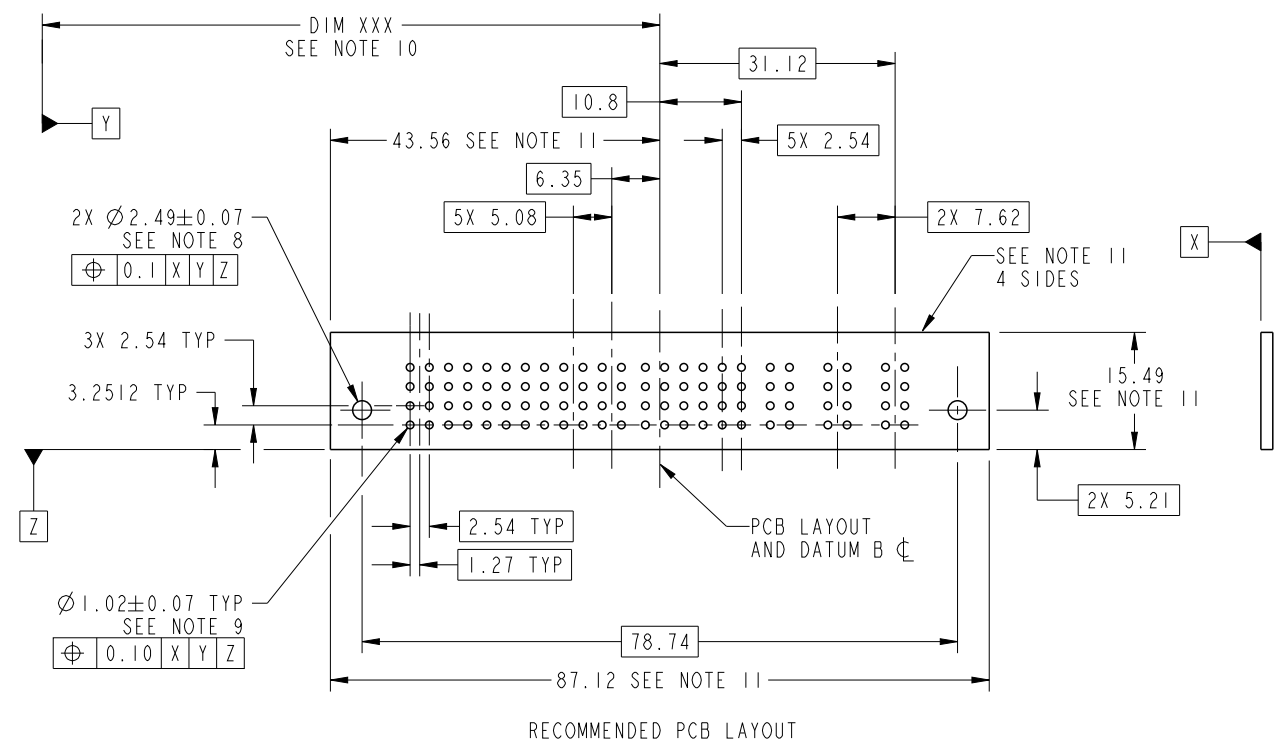


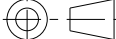


SECTION C-C  
SCALE 2:1

|             |                |            |                                   |                           |                        |           |           |              |  |
|-------------|----------------|------------|-----------------------------------|---------------------------|------------------------|-----------|-----------|--------------|--|
| dr          | Anson Liu      | 2010/05/14 | <div>projection</div> <div></div> | <div>MM</div> <div></div> | size                   | A4        | scale     | 1:1          |  |
| eng         | Luo Weller     | 2013/03/04 |                                   |                           | ecn no                 | -         |           |              |  |
| chr         | -              | -          |                                   |                           |                        |           |           |              |  |
| appr        | Pei-Ming Zheng | 2013/03/04 | product family                    |                           | PwrBlade               | rel level | Released  |              |  |
|             |                | title      |                                   |                           | 3ACP + 24S + 6P        |           | dwg no    |              |  |
|             |                |            |                                   |                           | VERTICAL STB RECEPT    |           | 51940-346 |              |  |
| www.fci.com |                | cat. no.   |                                   | *                         | Product - Customer Drw |           |           | rev          |  |
|             |                |            |                                   |                           |                        |           |           | A            |  |
|             |                |            |                                   |                           |                        |           |           | sheet 2 of 4 |  |



Copyright FCI.



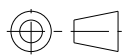
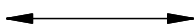

|   |                |   |   |   |                        |          |          |              |  |
|---|----------------|---|---|---|------------------------|----------|----------|--------------|--|
| dr  | Anson Liu      | 2010/05/14                                      | projection<br> | MM<br> | size                   | A4       | scale    | 1:1          |  |
| eng   | Luo Weller     | 2013/03/04                                      |   |   | ecn no                 | -        |          |              |  |
| chr   | -              | -   |   |   | rel level              |          |          |              |  |
| appr  | Pei-Ming Zheng | 2013/03/04                                      | product family  |   | PwrBlade               | Released |          |              |  |
|  |                | title<br>3ACP + 24S + 6P<br>VERTICAL STB RECEPT |   |   | dwg no<br>51940-346    |          | rev<br>A |              |  |
| www.fci.com   |                | cat. no.  |   | *   | Product - Customer Drw |          |          | sheet 3 of 4 |  |

NOTES:

1. DIMENSIONS AND TOLERANCES ARE IN ACCORDANCE WITH ASME Y14.5M, 1994 UNLESS OTHERWISE SPECIFIED.

CONNECTOR NOTES:

- 2 HOUSING MATERIAL: UL 94 V-0 GLASS FILLED HIGH-TEMP THERMOPLASTIC  
POWER CONTACT MATERIAL: COPPER ALLOY  
SIGNAL PIN MATERIAL: COPPER ALLOY
  3. PLATING SPEC.  
SEE ITEM 586 IN PRINT 10064183 FOR PLATING SPEC OF 51940-346, 51940-346LF RESPECTIVELY..
  - 4 MANUFACTURER'S NAME, DATE CODE AND OPTIONAL P/N TO APPEAR ON THIS SURFACE. THE P/N CAN BE OMITTED IF THERE IS NOT ENOUGH SPACE ON THIS SURFACE.
  5. PRODUCT SPECIFICATION GS-12-149.  
APPLICATION SPECIFICATION BUS-20-067.
  6. PACKAGED IN TRAYS.
- PCB NOTES:
7. ALL HOLE DIAMETERS ARE FINISHED HOLE SIZE.
  - 8 MOUNTING HOLES, WHERE APPLICABLE, ARE UNPLATED.
  - 9  $\varnothing 1.151 \pm 0.025$  DRILLED HOLES PLATED WITH  
0.008 MIN SnPb OR Sn OVER 0.03  
TO 0.08 Cu PLATING TO ACHIEVE  
 $\varnothing 1.02 \pm 0.07$  HOLE.
  - 10 "DIM XXX" TO BE DETERMINED BY THE CUSTOMER.
  - 11 CONNECTOR KEEP-OUT ZONE.
  12. THE VOID CORING IN BETWEEN POWER MODULES, SIGNAL MODULES AND END MODULES ARE OPTIONAL AND THE SHAPE MAY BE DIFFERENT FOR OPTIMIZE THE MOLDING PROCESS. THE VOID CORING WILL NOT EFFECT TO PRODUCT FUNCTION.

|   |   |            |  |  |                     |              |          |     |
|---|---|------------|--|--|---------------------|--------------|----------|-----|
| dr  | Anson Liu                                       | 2010/05/14 | <div>projection</div> <div></div> | <div>MM</div> <div></div> | size                | A4           | scale    | 1:1 |
| eng   | Luo Weller                                      | 2013/03/04 |  |  | ecn no              | -            |          |     |
| chr   | -   | -          |  |  |                     |              |          |     |
| appr  | Pei-Ming Zheng                                  | 2013/03/04 | product family   |  | PwrBlade            | rel level    | Released |     |
|  | title<br>3ACP + 24S + 6P<br>VERTICAL STB RECEPT |            |  |  | dwg no<br>51940-346 | rev<br>A     |          |     |
|   |   |            |  |  |                     |              |          |     |
| www.fci.com   | cat. no.  | *          | Product - Customer Drw   |  |                     | sheet 4 of 4 |          |     |