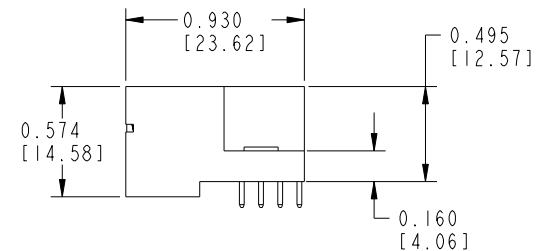
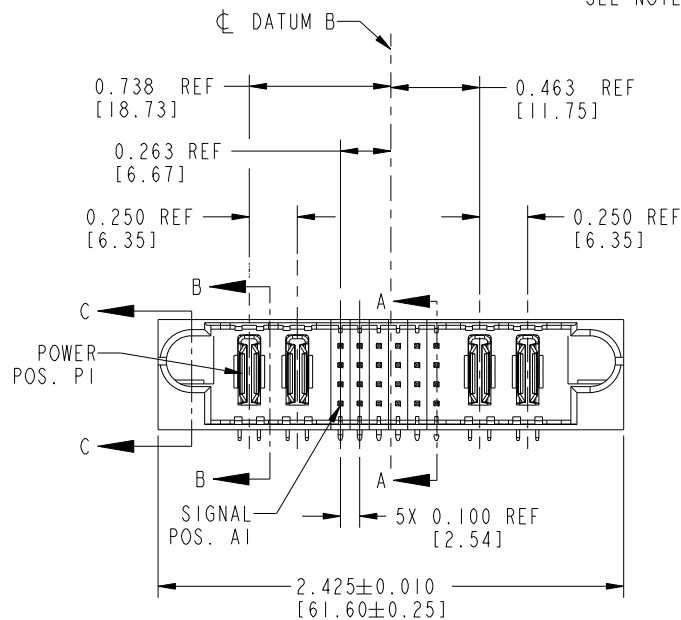
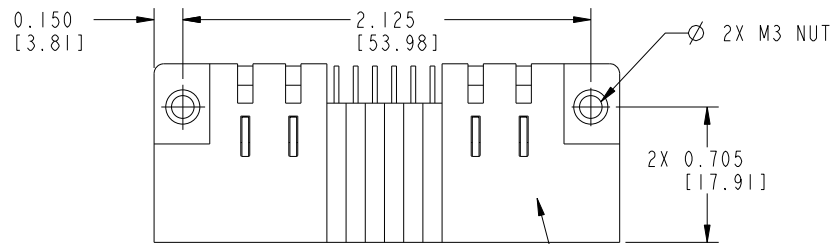

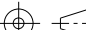
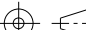




PRODUCT No.	ROWS	POWER			SIGNAL						POWER		E2
		E1	P1	P2	1	2	3	4	5	6	P3	P4	
51907-003-- NOTE:2	D C B A		PA	PA	UUUUUU	UUUUUU	UUUUUU	UUUUUU	UUUUUU	UUUUUU	PA	PA	
					TTTTTTTT	TTTTTTTT	TTTTTTTT	TTTTTTTT	TTTTTTTT	TTTTTTTT			
					SSSSSSSS	SSSSSSSS	SSSSSSSS	SSSSSSSS	SSSSSSSS	SSSSSSSS			
					RRRRRRRR	RRRRRRRR	RRRRRRRR	RRRRRRRR	RRRRRRRR	RRRRRRRR			

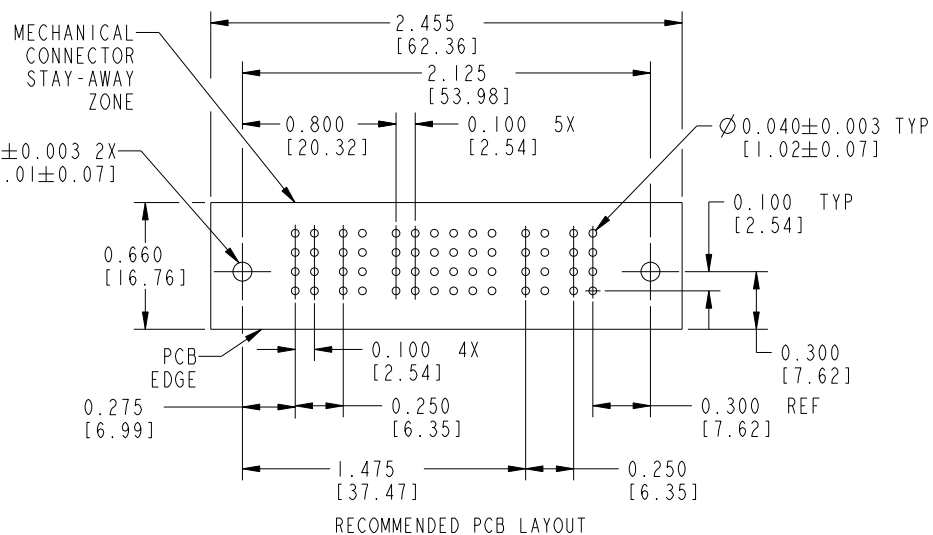
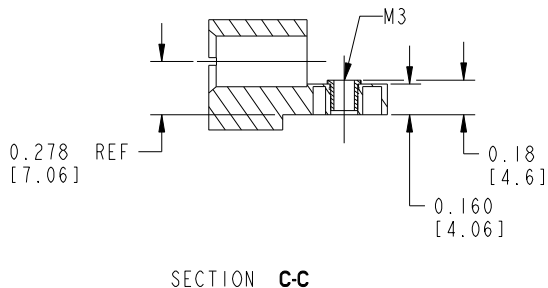
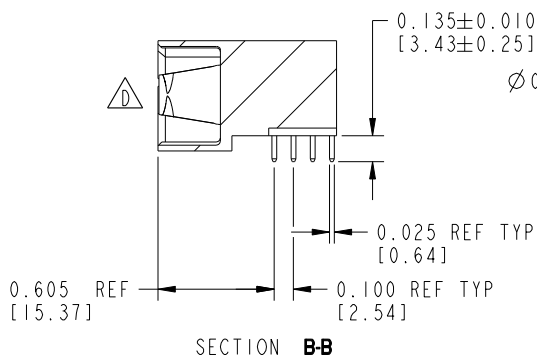
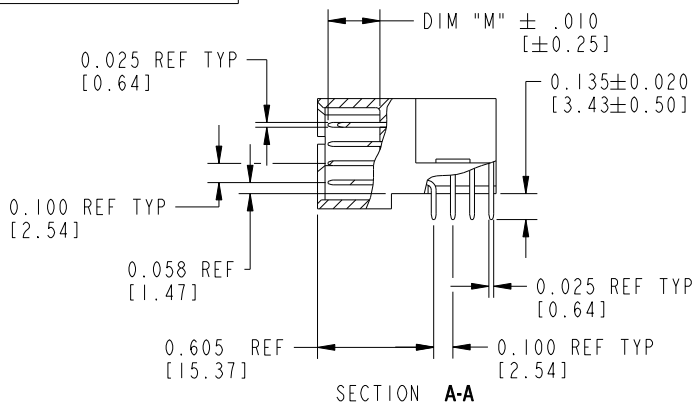


CODE	DIM "M" MATING LENGTH		CONTACT TYPE
H	0.220	[5.59]	SIGNAL
R	0.270	[6.86]	SIGNAL
S	0.270	[6.86]	SIGNAL
T	0.270	[6.86]	SIGNAL
U	0.270	[6.86]	SIGNAL
PA	N/A	[N/A]	POWER

NOTE 1				tolerances unless otherwise specified		CUSTOMER COPY		 www.fciconnect.com	
ltr	ecn no.	dr	date	linear	$.XX \pm .01/0.X \pm 0.3$	projection 		title 2P +24S +2P RIGHT ANGLE SOLDER HEADER	product family PwrBlade
A	V04-1113	TAB	11/15/04		$.XXX \pm .005/0.XX \pm 0.13$				
B	DG05-0336	CS	09/19/05	angles	$.XXXX \pm .0020/0.XXX \pm 0.051$	INCH/MM	scale 1:1	size A	dwg no 51907-003
C	DG06-0005	JMG	01/06/06		$0 \pm 2^\circ$				
D	DG08-0266	W D	09/22/08	dr	T. BRUNGARD 11/15/04				
				enrg	M. GRAY 11/15/04				
				chr	M. GRAY 11/15/04				
				appd	M. GRAY 11/15/04				
sheet index	revision sheet	D	D						
		1	2						
			3						



PRODUCT NUMBER  
51907-003--  
NOTE:2



NOTE 1				tolerances unless otherwise specified		CUSTOMER COPY		FCI	
litr	ecn no.	dr	date	linear	.XX±.01/0.X±0.3	projection		www.fciconnect.com	
D				angles	.XXX±.005/0.XX±0.13			title	
					.XXX±.0020/0.XXX±0.051			2P +24S +2P	
				dr	T. BRUNGARD 11/15/04			RIGHT ANGLE SOLDER HEADER	
				enrg	M. GRAY 11/15/04			product family	
				chr	M. GRAY 11/15/04			PwrBlade	
				appd	M. GRAY 11/15/04			code	
sheet index		revision sheet		scale		1:1		size	
								dwg no	
								51907-003	
								sheet	
								2 of 3	

cage code 22526

Pro/E

PDM: Rev:D

STATUS: Released

Printed: Dec 20, 2010



1 | 2

3 |

4

PRODUCT NUMBER  
51907-003--  
NOTE:2

CONNECTOR NOTES:

1. HOUSING MATERIAL: UL 94 V-0 GLASS FILLED HIGH TEMP THERMOPLASTIC  
POWER CONTACT MATERIAL: COPPER ALLOY  
SIGNAL CONTACT MATERIAL: COPPER ALLOY  
M3 NUT MATERIAL: BRASS ALLOY
- △ 2. SEE ITEM 1 & 2 IN PRINT 10064183 FOR PLATING SPEC OF 51907-003 AND 51907-003LF RESPECTIVELY.v
3. "MANUFACTURER'S" NAME, P/N, AND DATE CODE TO APPEAR ON THIS SURFACE
4. PRODUCT SPECIFICATION GS-12-149

PCB NOTES:

5. ALL DIMENSIONS ARE BASIC UNLESS OTHERWISE SPECIFIED.
6. ALL THROUGH HOLES ARE LOCATED WITH A TRUE POSITION OF 0.004 [0.10]
7. ALL HOLE DIAMETERS ARE FINISHED HOLE SIZE
8. Ø0.158[4.01] THROUGH HOLES ARE UNPLATED.
9. Ø0.0453±0.0010 [1.151±0.025] DRILLED HOLES PLATED WITH 0.0003 [0.008] MIN SnPb OVER 0.001 [0.03] TO 0.003 [0.08] Cu PLATING TO ACHIEVE A Ø0.040±0.003 [1.02±0.07] HOLE.
10. A/D SYMBOL WILL BE NEXT TO ANY DIMENSION, VIEW, OR NOTE WHICH HAS BEEN MODIFIED WITH THE CURRENT DRAWING REVISION.

mat'l code				SEE NOTES		tolerances unless otherwise specified		CUSTOMER		FCI			
ltr	ecn no.	dr	date					COPY		www.fciconnect.com			
D				linear		.XX±.01/0.X±0.3		projection		title			
						.XXX±.005/0.XX±0.13				2P +24S +2P			
				angles		.XXX±.0020/0.XXX±0.051				RIGHT ANGLE SOLDER HEADER			
						0°±2°				product family			
				dr	T. BRUNGARD	11/15/04		INCH/MM		PwrBlade			
				enrg	M. GRAY	11/15/04		scale		size			
				chr	M. GRAY	11/15/04				dwg no			
				appd	M. GRAY	11/15/04		1:1		A			
sheet index		revision sheet								code			
										213			
										sheet			
										3 of 3			

B

B

1 | 2

Pro/E

PDM: Rev:D

STATUS: Released

Printed: Dec 20, 2010

cage code 22526

4