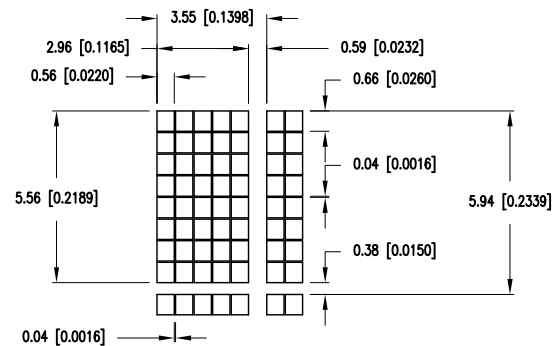


PART NUMBER	LCM-S01602DSF/B-Y	REV.	B
DATE	E.C.N. NUMBER AND REVISION COMMENTS		REV.
09.03.98	E.C.N. #10BRDR. & REDRAWN.		A
01.23.13	E.C.N. #10BRDR. & REDRAWN.		B

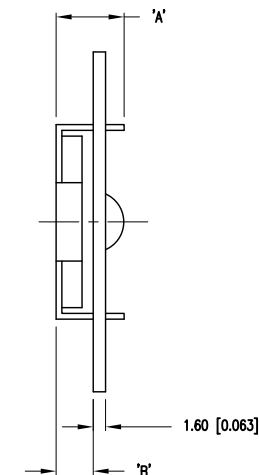
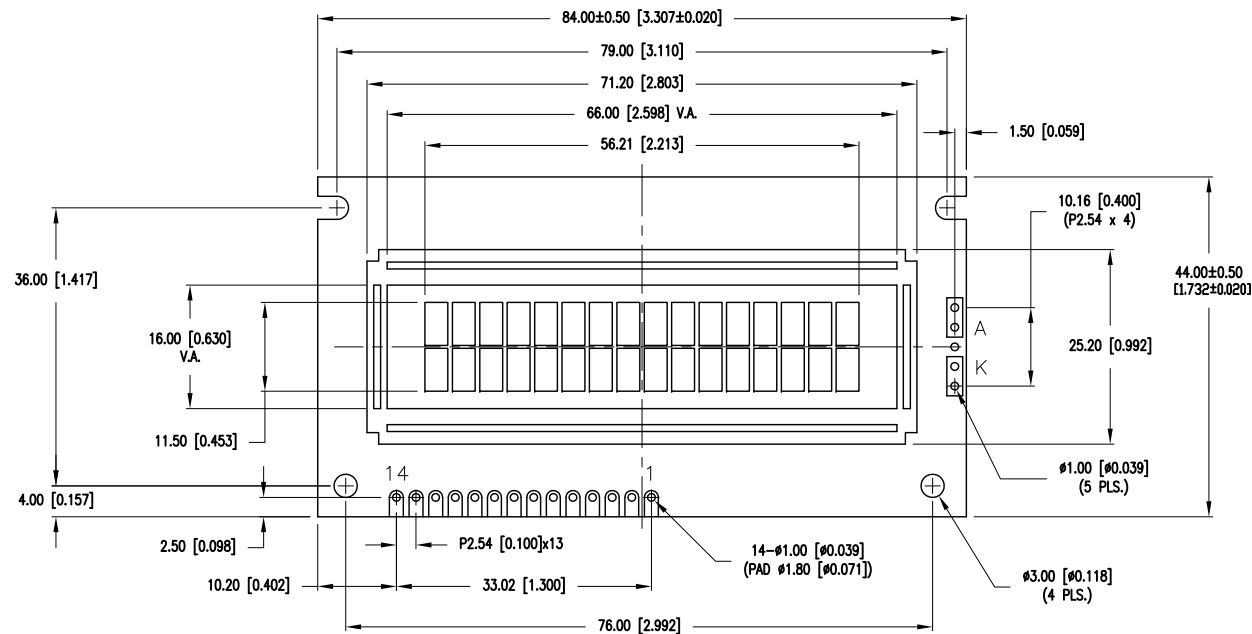
P/N PREFIX/SUFFIX TABLE		
LCM-X	DX	DESCRIPTION
STANDARD	SR	STN, REFLECTIVE
	SF	STN, TRANSFLECTIVE(W/ BACKLIGHT)
HIGH TEMP.	TR	TN, REFLECTIVE
	TF	TN, TRANSFLECTIVE(W/ BACKLIGHT)

CAUTION: STATIC SENSITIVE DEVICE
FOLLOW PROPER E.S.D. HANDLING PROCEDURES
WHEN WORKING WITH THIS PART.


CHARACTER DETAIL



TYPE	DIM.	A	B
WITH BACKLIGHT	12.7	8.7	
NO BACKLIGHT	8.8	4.8	



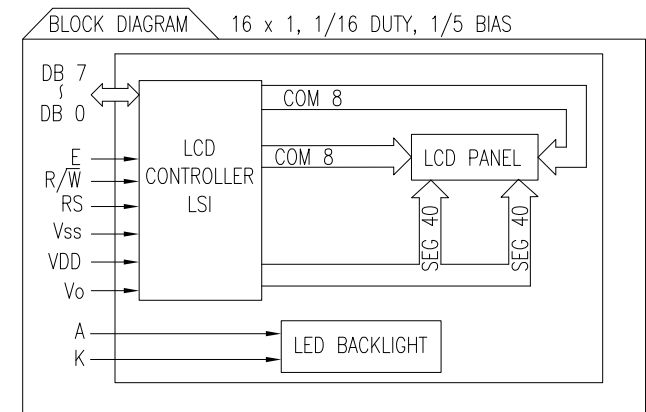
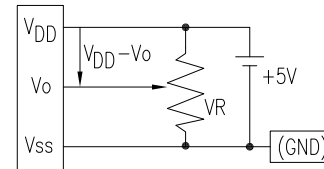
*UNLESS OTHERWISE SPECIFIED TOLERANCES PER DECIMAL PRECISION ARE: X=±1 (±0.039), X.X=±0.5 (±0.020), X.XX=±0.25 (±0.010), X.XXX=±0.127 (±0.005). LEAD SIZE=±0.05 (±0.002), LEAD LENGTH=±0.75 (±0.030). MIN.= +DECIMAL PRECISION -0.00 MAX.= +0.00 -DECIMAL PRECISION

	290 E. HELEN ROAD PALATINE, IL 60067-6976 PHONE: +1.847.359.2790 FAX: +1.847.359.6538 WEB: WWW.LUMEX.COM	5.56mm CHARACTER HEIGHT, 5x8 DOT MATRIX, 16 x 2 LCD MODULE, 1/16 DUTY, 1/5 BIAS, YELLOW BACKGROUND. **THE SPECIFICATIONS MAY CHANGE AT ANY TIME WITHOUT NOTICE DUE TO NEW MATERIALS OR PRODUCT IMPROVEMENT.** CONFIDENTIAL INFORMATION THE INFORMATION CONTAINED IN THIS DOCUMENT IS THE PROPERTY OF LUMEX INC. EXCEPT AS SPECIFICALLY AUTHORIZED IN WRITING BY LUMEX INC., THE HOLDER OF THIS DOCUMENT SHALL KEEP ALL INFORMATION CONTAINED HEREIN CONFIDENTIAL AND SHALL PROTECT SAME IN WHOLE OR IN PART FROM DISCLOSURE AND DISSEMINATION TO ALL THIRD PARTIES.	DATE: 01.18.13	DRAWN BY: MA
			PAGE: 1 OF 2	CHKD BY: JD
			SCALE: N/A	APRVD BY: JD
			UNIT: mm [INCH]	Ⓟ

PART NUMBER	LCM-S01602DSF/B-Y	REV.	B
DATE	E.C.N. NUMBER AND REVISION COMMENTS		REV.
09.03.98	E.C.N. #10BRDR. & REDRAWN.		A
01.23.13	E.C.N. #10BRDR. & REDRAWN.		B

PIN CONFIGURATION			
PIN NO.	SYMBOL	LEVEL	FUNCTION
1	V _{SS}	—	POWER SUPPLY GND (0V) 5V FOR LCD DRIVE
2	V _{DD}	—	
3	V _O	—	
4	RS	H/L	REGISTER SELECT SIGNAL H: DATA INPUT L: INSTRUCTION INPUT
5	R/ \bar{W}	H/L	H: DATA READ (MODULE-->MPU) L: DATA WRITE (MODULE<--MPU)
6	E	H,H->L	ENABLE
7~14	DB0~DB7	H/L	DATA BUS—SOFTWARE SELECTABLE 4 OR 8 BIT MODE.
A	—	—	ANODE LED BACKLIGHT
K	—	—	CATHODE LED BACKLIGHT

V_{DD}-V_O: LCD DRIVING VOLTAGE
VR: 10K Ω -20K Ω



ELECTRICAL CHARACTERISTICS			V _{DD} =4.7V to 5.3V, T _A =25°C					
ITEM			SYMBOL	CONDITION	STANDARD VALUE			UNIT
					MIN.	TYP.	MAX.	
SUPPLY VOLTAGE FOR LOGIC			V _{DD} -V _{SS}	—	—	5.0	—	V
SUPPLY CURRENT FOR LOGIC			I _{DD}	V _{DD} =5V	—	1.6	2.5	mA
INPUT VOLTAGE		HIGH	V _{IH}	—	2.2	—	V _{DD}	V
		LOW	V _{IL}	—	0	—	0.6	V
OUTPUT VOLTAGE		HIGH	V _{OH}	—	2.4	—	—	V
		LOW	V _{OL}	—	—	—	0.4	V
*LED BACKLIGHT	VOLTAGE		V _f	I _f =150mA	—	4.2	4.6	V
	CURRENT		I _f	—	—	150	200	mA
	POWER CONSUMPTION		P _D	—	—	630	—	mW
	LUMINOUS		L	I _f =150mA	70	—	—	cd/m ²
	COLOR		—	—	—	—	—	nm

*ONLY APPLIES TO MODULES WITH BACKLIGHT

ABSOLUTE MAXIMUM RATINGS					
ITEM	SYMBOL	TEST CONDITION	STANDARD VALUE		UNIT
SUPPLY VOLTAGE FOR LOGIC	V _{DD} -V _{SS}	T _a =25°C	4.7	5.3	V
SUPPLY VOLTAGE FOR LCD DRIVE	V _{DD} -V _O	—	4.2@50°C	4.8@0°C	V
INPUT VOLTAGE	V _I	T _a =25°C	V _{SS}	V _{DD}	V
OPERATING TEMPERATURE	T _{opr}	LCM-S	0	50	°C
		LCM-H	-20	70	°C
STORAGE TEMPERATURE	T _{stg}	LCM-S	-20	70	°C
		LCM-H	-30	85	°C

*UNLESS OTHERWISE SPECIFIED TOLERANCES PER DECIMAL PRECISION ARE: X=±1 (±0.039), X.X=±0.5 (±0.020), X.XX=±0.25 (±0.010), X.XXX=±0.127 (±0.005). LEAD SIZE=±0.05 (±0.002), LEAD LENGTH=±0.75 (±0.030). MIN.=^{+DECIMAL PRECISION}_{-0.00} MAX.=^{+0.00}_{-DECIMAL PRECISION} UNCONTROLLED DOCUMENT

	290 E. HELEN ROAD PALATINE, IL 60067-6976 PHONE: +1.847.359.2790 FAX: +1.847.359.6538 WEB: WWW.LUMEX.COM	5.56mm CHARACTER HEIGHT, 5x8 DOT MATRIX, 16 x 2 LCD MODULE, 1/16 DUTY, 1/5 BIAS, YELLOW BACKGROUND.		DATE: 01.18.13	DRAWN BY: MA
		THE SPECIFICATIONS MAY CHANGE AT ANY TIME WITHOUT NOTICE DUE TO NEW MATERIALS OR PRODUCT IMPROVEMENT. CONFIDENTIAL INFORMATION THE INFORMATION CONTAINED IN THIS DOCUMENT IS THE PROPERTY OF LUMEX INC. EXCEPT AS SPECIFICALLY AUTHORIZED IN WRITING BY LUMEX INC., THE HOLDER OF THIS DOCUMENT SHALL KEEP ALL INFORMATION CONTAINED HEREIN CONFIDENTIAL AND SHALL PROTECT SAME IN WHOLE OR IN PART FROM DISCLOSURE AND DISSEMINATION TO ALL THIRD PARTIES.		PAGE: 2 OF 2	CHKD BY: JD
				SCALE: N/A	APRVD BY: JD
				UNIT: mm [INCH]	(Pb)