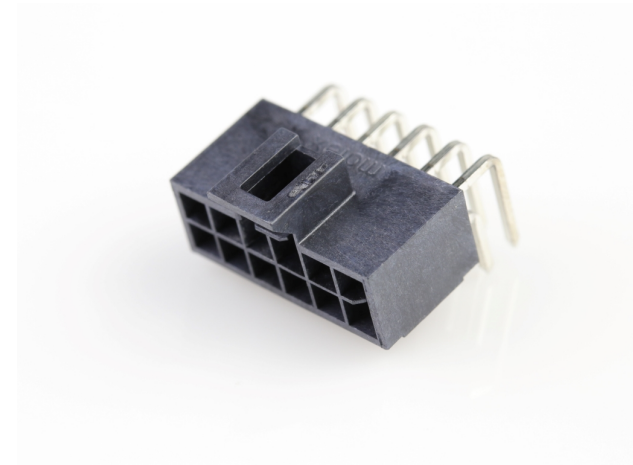




**Part Number :** [1053141212](#)  
**Product Description :** Nano-Fit Right-Angle Header, Through Hole, 2.50mm Pitch, Dual Row, 12 Circuits, 0.38µm Gold (Au) Plating, Black, Glow-Wire Capable, Tray  
**Series Number :** 105314  
**Status :** Active  
**Product Category :** PCB Headers and Receptacles  
**Packaging Alternative :** [1053141712](#)  
(Embossed Tape on Reel)



## Documents & Resources

### Drawings

[1053141212\\_sd.pdf](#)  
[PK-105309-200-000.pdf](#)

### 3D Models and Design Files


[1053141212\\_stp.zip](#)  
[SYM-105314-XX12-001.zip](#)

### Specifications

[AS-105300-100-001.pdf](#)  
[1053001000-PS-CH-000.pdf](#)  
[1053001000-PS-ES-000.pdf](#)  
[1053001000-PS-JP-000.pdf](#)  
[1053001000-PS-SK-000.pdf](#)  
[PS-105300-100-001.pdf](#)  
[1053000000-TS-000.pdf](#)

## Product Environment Compliance

### Compliance

GADSL/IMDS	Compliant with Exemption 44; 34; 33
China RoHS	
EU ELV	Compliant per 2000/53/EC
Low-Halogen Status	Low-Halogen per IEC 61249-2-21
REACH SVHC	Not Contained per D(2024)6225-DC (07 Nov 2024)

EU RoHS	Compliant per EU 2015/863
---------	---------------------------

#### Multiple Part Product Compliance Statements

- Eu RoHS
- REACH SVHC
- Low-Halogen

#### Multiple Part Industry Compliance Documents

- IPC 1752A Class C
- IPC 1752A Class D
- Molex Product Compliance Declaration
- IEC-62474
- chemSHERPA (xml)

#### EU RoHS Certificate of Compliance

---

## Part Details

### General

Status	Active
Category	PCB Headers and Receptacles
Series	105314
Description	Nano-Fit Right-Angle Header, Through Hole, 2.50mm Pitch, Dual Row, 12 Circuits, 0.38µm Gold (Au) Plating, Black, Glow-Wire Capable, Tray
Application	Power, Wire-to-Board
Component Type	PCB Header
Product Name	Nano-Fit
UPC	887191927572

### Agency

CSA	LR19980
UL	E29179

### Electrical

Current - Maximum per Contact	7.5A
Voltage - Maximum	250V AC (RMS)/DC

### Physical

Breakaway	No
Circuits (Loaded)	12
Circuits (maximum)	12
Color - Resin	Black
Durability (mating cycles max)	50
Flammability	94V-0
Glow-Wire Capable	Yes
Guide to Mating Part	No
Keying to Mating Part	Yes
Lock to Mating Part	Yes
Material - Metal	Brass
Material - Plating Mating	Gold
Material - Plating Termination	Tin
Material - Resin	Liquid Crystal Polymer
Net Weight	1.290/g
Number of Rows	2
Orientation	Right Angle
Packaging Type	Tray
PC Tail Length	3.20mm
PCB Locator	Yes
PCB Retention	Yes
PCB Thickness - Recommended	1.60mm, 2.40mm
Pitch - Mating Interface	2.50mm
Pitch - Termination Interface	2.50mm
Plating min - Mating	0.381µm
Plating min - Termination	1.524µm
Polarized to Mating Part	Yes
Polarized to PCB	Yes
Shrouded	Yes
Stackable	No
Temperature Range - Operating	-40° to +125°C
Termination Interface Style	Through Hole

---

**Mates With / Use With**

## Mates with Part(s)

Description	Part Number
Nano-Fit Receptacle Housing, TPA Capable, 2.50mm Pitch, Dual Row, 12 Circuits, Black, Glow-Wire Capable	<u>1053081212</u>

---

This document was generated on Mar 13, 2025