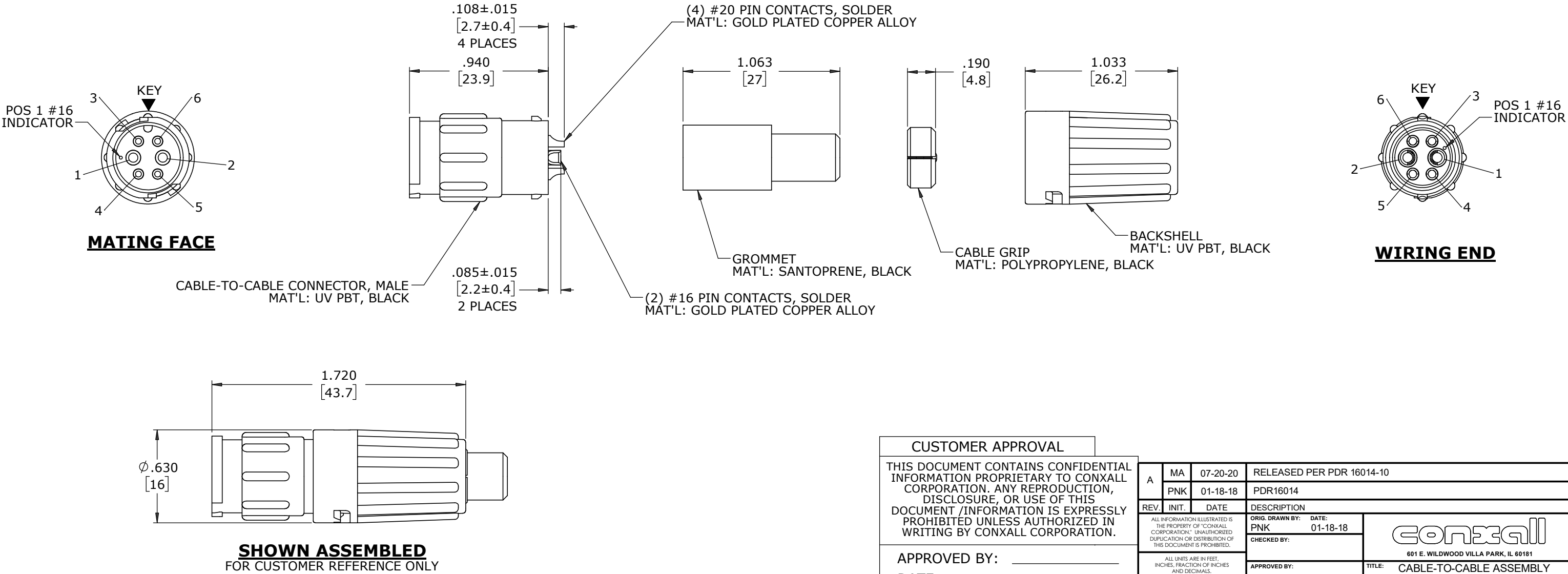


- NOTES:
- 1. ALL PARTS TO BE BULK PACKED
  - 2. CONTACTS ARE ASSEMBLED WITH THE SOLDER CUPS FACING DIRECTLY OUTWARD
  - 3. ALL DIMENSIONS ARE REFERENCE EXCEPT THOSE WITH A TOLERANCE

| ASSEMBLY P/N    | CONTACT QTY. |     | CABLE O.D. RANGE   |
|-----------------|--------------|-----|--------------------|
|                 | #16          | #20 |                    |
| W8C82-6PG-P-513 | 2            | 4   | .13-.15 [3.3-3.8]  |
| W8C82-6PG-P-516 |              |     | .16-.18 [4.1-4.6]  |
| W8C82-6PG-P-519 |              |     | .19-.21 [4.8-5.3]  |
| W8C82-6PG-P-522 |              |     | .22-.25 [5.6-6.]   |
| W8C82-6PG-P-526 |              |     | .25-.27 [6.4-6.9]  |
| W8C82-6PG-P-528 |              |     | .26-.285 [6.6-7.2] |



DIMENSIONS IN BRACKETS [ ] ARE IN MILLIMETERS


CUSTOMER APPROVAL

THIS DOCUMENT CONTAINS CONFIDENTIAL INFORMATION PROPRIETARY TO CONXALL CORPORATION. ANY REPRODUCTION, DISCLOSURE, OR USE OF THIS DOCUMENT /INFORMATION IS EXPRESSLY PROHIBITED UNLESS AUTHORIZED IN WRITING BY CONXALL CORPORATION.

APPROVED BY: \_\_\_\_\_

DATE: \_\_\_\_\_

RoHS COMPLIANT

|  |       |          |  |  |
|--|-------|----------|--|--|
| A  | MA    | 07-20-20 | RELEASED PER PDR 16014-10              |  |
|  | PNK   | 01-18-18 | PDR16014                               |  |
| REV.   | INIT. | DATE     | DESCRIPTION                            |  |
|  | PNK   | 01-18-18 | ORIG. DRAWN BY: DATE:                  | <br>601 E. WILDWOOD VILLA PARK, IL 60181            |
| ALL INFORMATION ILLUSTRATED IS THE PROPERTY OF "CONXALL CORPORATION". UNAUTHORIZED DUPLICATION OR DISTRIBUTION OF THIS DOCUMENT IS PROHIBITED.     |       |          | CHECKED BY:                            |  |
| ALL UNITS ARE IN FEET, INCHES, FRACTION OF INCHES AND DECIMALS.  |       |          | APPROVED BY:                           | TITLE: CABLE-TO-CABLE ASSEMBLY<br>2-16 + 4-20 PIN CONTACTS, SOLDER<br>INSTA-CLICK™ MINI-CON-X POWER/SIGNAL<br>CUSTOMER: STANDARD PRODUCT |
| UNLESS OTHERWISE SPECIFIED TOLERANCES:<br>3 PLACE DECIMALS ±.010<br>ANGLES ±1°<br>FRACTIONS ±1/16<br>= CRITICAL CHARACTERISTIC FLAG PER SPEC. XXXX |       |          | SCALE: NTS<br>SIZE: B<br>SHEET: 1 OF 1 |  |
| FILE: W8C82-6PG-P-5XX  |       |          | DIRECTORY: SLW                         | PART NUMBER: W8C82-6PG-P-5XX   |
|  |       |          |  | REV A  |