

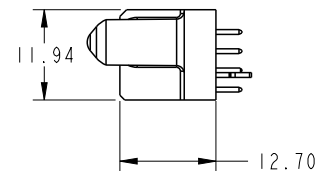
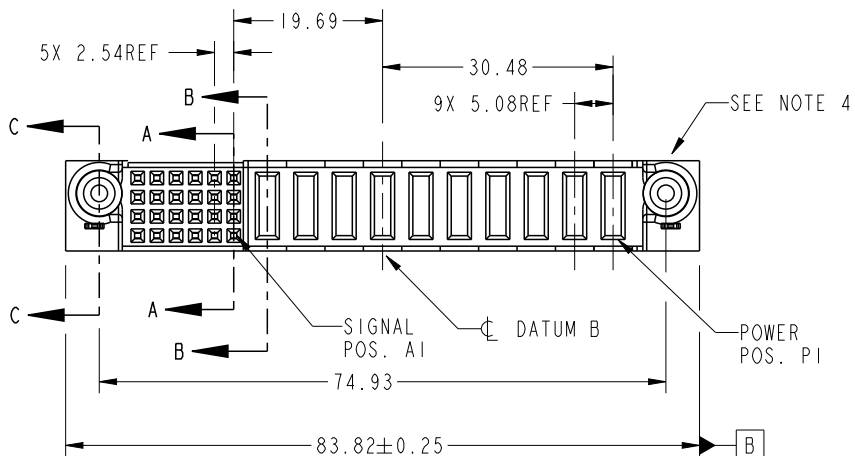


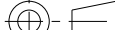




Copyright FCI.

PRODUCT NO.	ROWS	SIGNAL							POWER										E1
		E2	6	5	4	3	2	1	P10	P9	P8	P7	P6	P5	P4	P3	P2	P1	
51940-123- NOTE ③	D C B A		E	E	E	E	E	E	PA	PA	PA	PA	PA	PA	PA	PA	PA	PA	



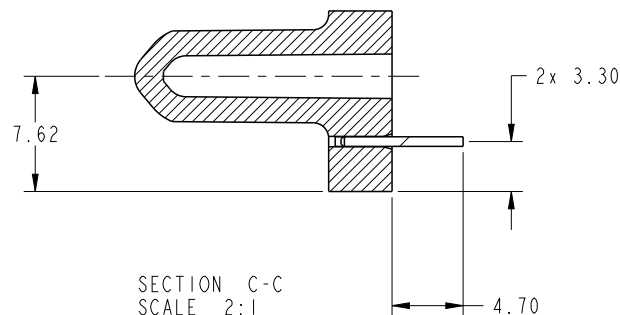
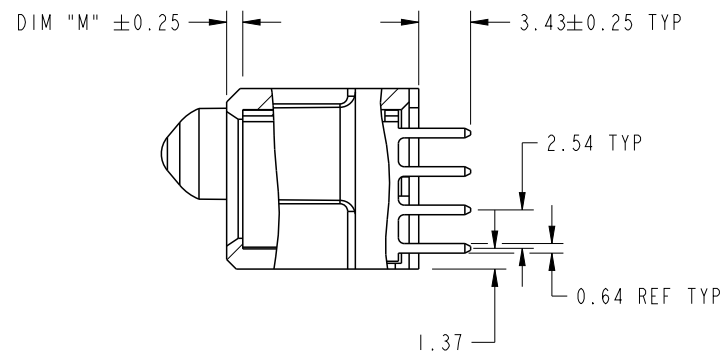
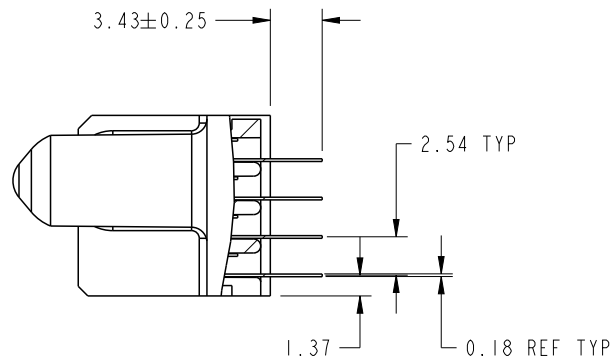
CODE	DIM "M" MATING LENGTH	CONTACT TYPE
E	N/A [N/A]	SIGNAL
PA	0.042 [1.07]	POWER
HA	N/A [N/A]	HOLD-DOWN

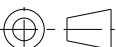


spec ref *				dr	wcadmin	2006/06/19	projection 		size	A4	scale	1:1
tolerance std	TOLERANCES UNLESS OTHERWISE SPECIFIED			eng	Luo Weller	2014/11/05			ecn no	ELX-DG-19309-1		
				chr	-	-						
				appr	Pei-Ming Zheng	2014/11/05						
surface ✓	linear	0.X	±0.50		title 10P + 24S VERTICAL SOLDER RECEPT				dwg no	51940-123		rev B
		0.XX	±0.25									
		0.XXX	±0.10									
	angular	0°	±2°	www.fci.com	cat. no.		*	Product - Customer Drw			sheet 1 of 4	

PrintE File - REV C - 2009-06-09

PRODUCT NUMBER

51940-123_ _
NOTE ③



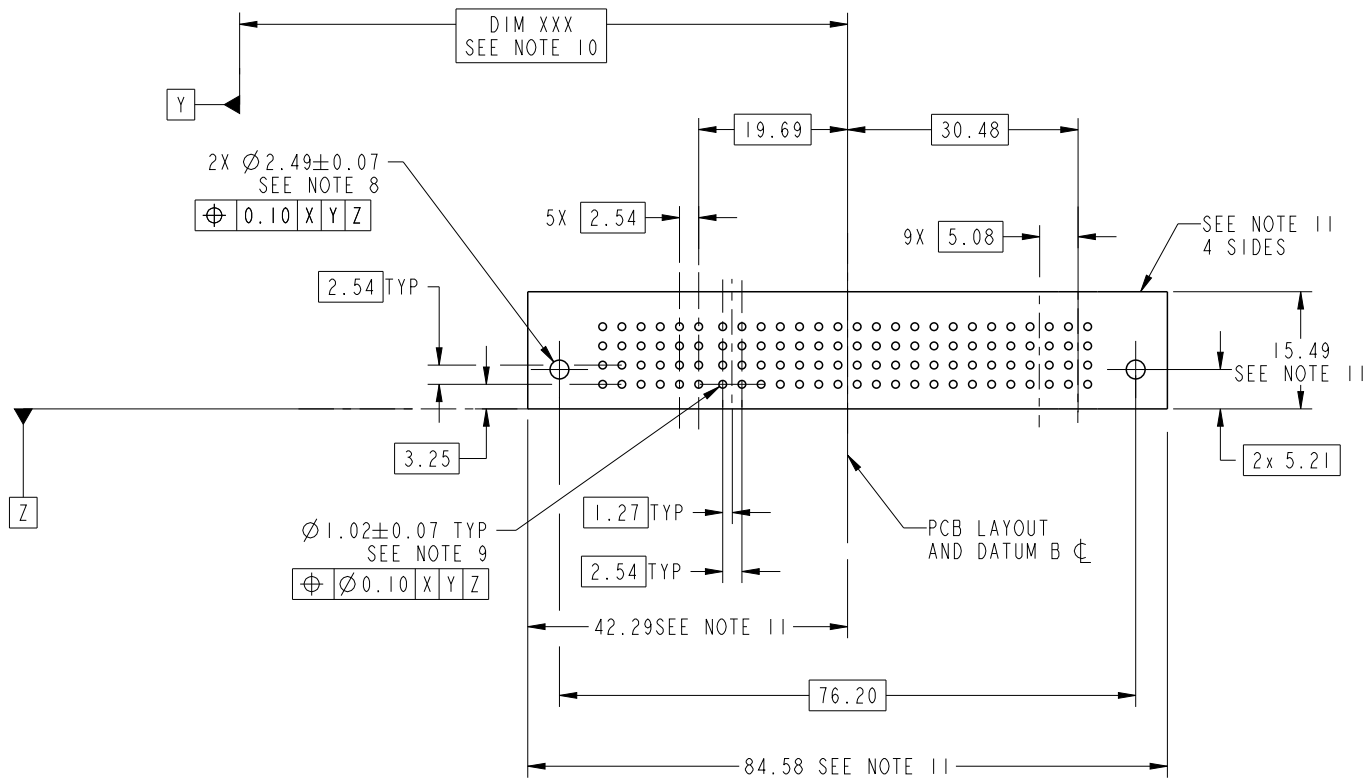
dr	w wadmin	2006/06/19	<div>projection</div> <div></div>	<div>MM</div> <div></div>	size	A4	scale	1:1				
eng	Luo Weller	2014/11/05			ecn no		ELX-DG-19309-1					
chr	-	-			rel level		Released					
appr	Pei-Ming Zheng	2014/11/05	product family		PwrBlade							
	title			10P + 24S			dwg no		51940-123		rev	
	VERTICAL SOLDER RECEPT							B				
www.fci.com	cat. no.		*	Product - Customer Drw					sheet 2 of 4			



Copyright FCI.

PRODUCT NUMBER

51940-123--
NOTE ③



dr	wcadmin	2006/06/19	<div>projection</div> <div></div>	<div>MM</div> <div></div>	size	A4	scale	1:1
eng	Luo Weller	2014/11/05			ecn no	ELX-DG-19309-1		
chr	-	-			rel level	Released		
appr	Pei-Ming Zheng	2014/11/05	product family		PwrBlade			
<div></div>			title		IOP + 24S		rev	
			VERTICAL SOLDER RECEPT		dwg no		51940-123	
							B	
www.fci.com			cat. no.		*	Product - Customer Drw		sheet 3 of 4

PrintE File - REV C - 2009-06-09

PRODUCT NUMBER

51940-123
NOTE ③

NOTES:

1. DIMENSIONS AND TOLERANCES ARE IN ACCORDANCE WITH
ASME Y14.5M, 1994 UNLESS OTHERWISE SPECIFIED.

CONNECTOR NOTES:

② HOUSING MATERIAL: UL 94 V-0 GLASS FILLED HIGH-TEMP THERMOPLASTIC
POWER CONTACT MATERIAL: COPPER ALLOY
SIGNAL PIN MATERIAL: COPPER ALLOY

3. SEE ITEM 5 & 6 IN PRINT 10064183 FOR PLATING SPEC OF 51940-123 AND 51940-123LF RESPECTIVELY.

④ MANUFACTURER'S NAME, DATE CODE AND OPTIONAL P/N TO APPEAR ON
THIS SURFACE. THE P/N CAN BE OMITTED IF THERE IS NOT ENOUGH
SPACE ON THIS SURFACE.

5. PRODUCT SPECIFICATION GS-12-149.
APPLICATION SPECIFICATION BUS-20-067.

6. PACKAGED IN TRAYS.

PCB NOTES:

7. ALL HOLE DIAMETERS ARE FINISHED HOLE SIZE.

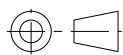
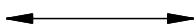

⑧ MOUNTING HOLES, WHERE APPLICABLE, ARE UNPLATED.

⑨ $\varnothing 1.151 \pm 0.025$ DRILLED HOLES PLATED WITH
0.008 MIN SnPb OR Sn OVER 0.03
TO 0.08 Cu PLATING TO ACHIEVE
 $\varnothing 1.02 \pm 0.07$ HOLE.

⑩ "DIM XXX" TO BE DETERMINED BY THE CUSTOMER.

⑪ CONNECTOR KEEP-OUT ZONE.

12. THE VOID CORING IN BETWEEN POWER MODULES, SIGNAL MODULES AND END MODULES ARE
OPTIONAL AND THE SHAPE MAY BE DIFFERENT FOR OPTIMIZE THE MOLDING PROCESS. THE VOID
CORING WILL NOT EFFECT TO PRODUCT FUNCTION.

dr	w wadmin	2006/06/19	projection 	MM 	size	A4	scale	1:1
eng	Luo Weller	2014/11/05			ecn no	ELX-DG-19309-1		
chr	-	-			rel level			Released
appr	Pei-Ming Zheng	2014/11/05	product family		PwrBlade			
	title 10P + 24S VERTICAL SOLDER RECEPT				dwg no	51940-123		rev B
	www.fci.com	cat. no.				*	Product - Customer Drw	